

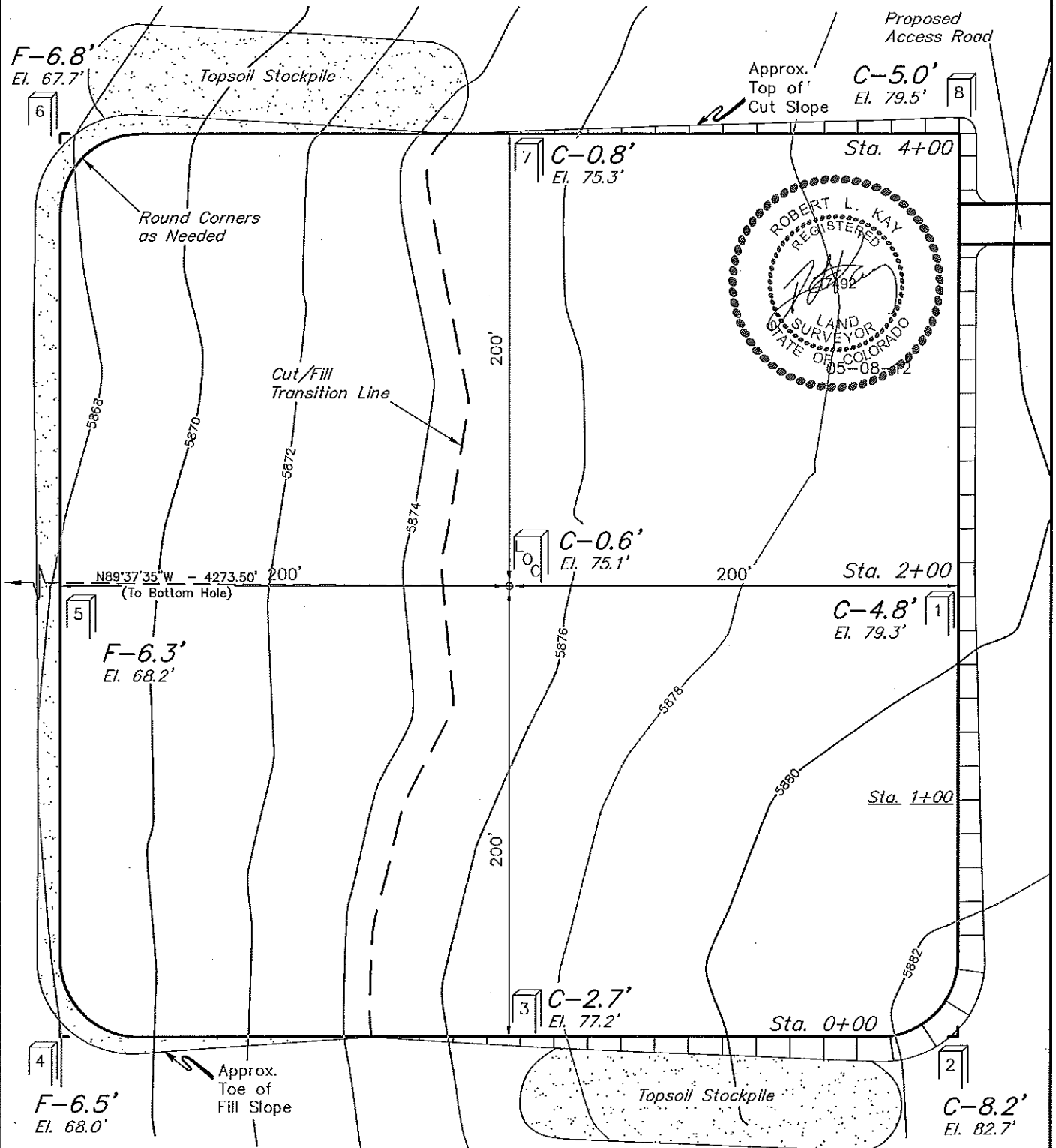
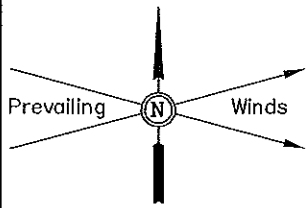
# ConocoPhillips Company

## CONSTRUCTION LAYOUT FOR

TEBO #3-1H  
SECTION 3, T5S, R64W, 6th P.M.  
599' FNL 400' FEL

FIGURE #1

SCALE: 1" = 60'  
DATE: 03-06-12  
DRAWN BY: A.W.  
REV: 03-27-12  
REV: 05-08-12 W.M.



Elev. Ungraded Ground At Loc. Stake = 5875.1'  
FINISHED GRADE ELEV. AT LOC. STAKE = 5874.5'

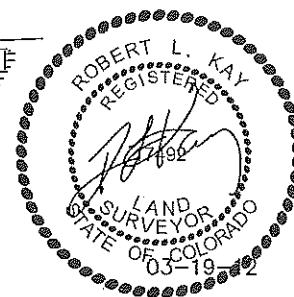
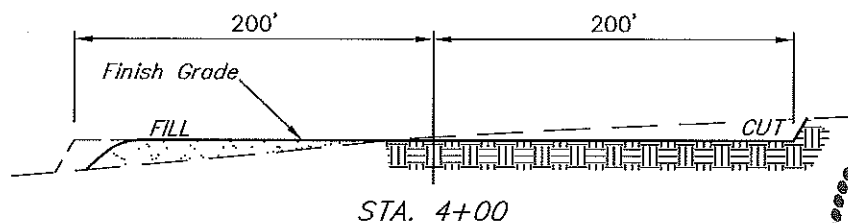
UINTAH ENGINEERING & LAND SURVEYING  
85 So. 200 East \* Vernal, Utah 84078 \* (435) 789-1017

1" = 40'  
X-Section  
Scale  
1" = 100'

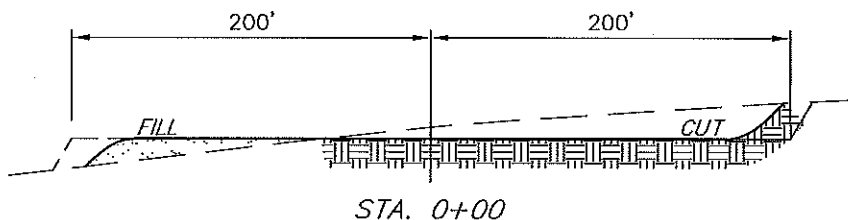
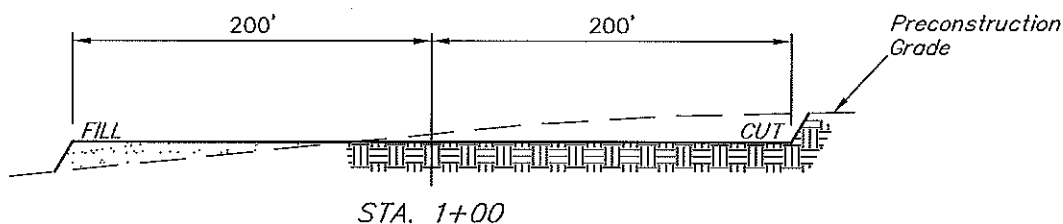
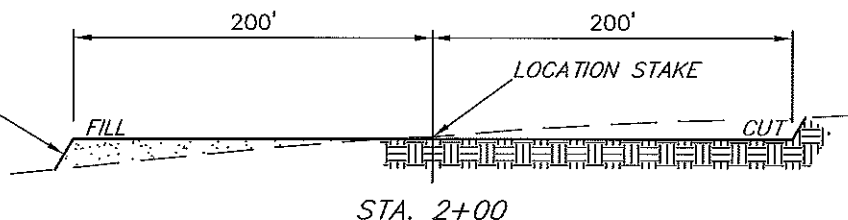
DATE: 03-06-12  
DRAWN BY: A.W.

ConocoPhillips Company  
CONSTRUCTION LAYOUT CROSS SECTIONS FOR  
TEBO #3-1H  
SECTION 3, T5S, R64W, 6th P.M.  
599' FNL 400' FEL

FIGURE #2



Slope = 1 1/2:1  
(Typ.)



NOTE:

Topsoil should not be Stripped Below Finished Grade on Substructure Area.

APPROXIMATE ACREAGES  
WELL SITE DISTURBANCE = ± 4.223 ACRES  
ACCESS ROAD DISTURBANCE = ± 0.116 ACRES  
TOTAL = ± 4.339 ACRES

\* NOTE:  
FILL QUANTITY INCLUDES 5% FOR COMPACTION

APPROXIMATE YARDAGES

(6") Topsoil Stripping = 3,210 Cu. Yds.  
Remaining Location = 10,180 Cu. Yds.  
TOTAL CUT = 13,390 CU. YDS.  
FILL = 10,180 CU. YDS.

EXCESS MATERIAL = 3,210 Cu. Yds.  
Topsoil = 3,210 Cu. Yds.  
EXCESS UNBALANCE = 0 Cu. Yds.  
(After Interim Rehabilitation)

UINTAH ENGINEERING & LAND SURVEYING  
85 So. 200 East \* Vernal, Utah 84078 \* (435) 789-1017