

Well Name: **Booth 10-26**

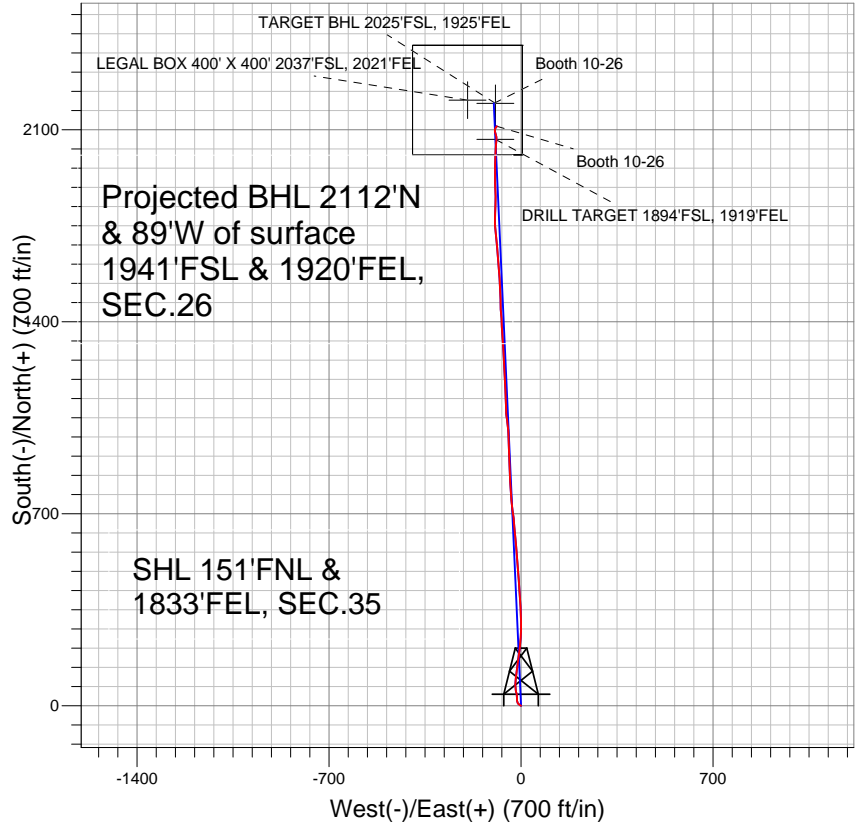
Surface Location: Booth 15-26 Pad Sec.35-T7N-R65W  
 North American Datum 1983 US State Plane 1983 Colorado Northern Zone

Ground Elevation: 4834.0

+N/-S	+E/-W	Northing	Easting	Latitude	Longitude
0.0	0.0	1439856.35	3242615.69	40.537528	-104.627096
Original Well Elev WELL @ 4844.0ft (Original Well Elev)					

Slot

## BAYSWATER EXPLORATION & PRODUCTION



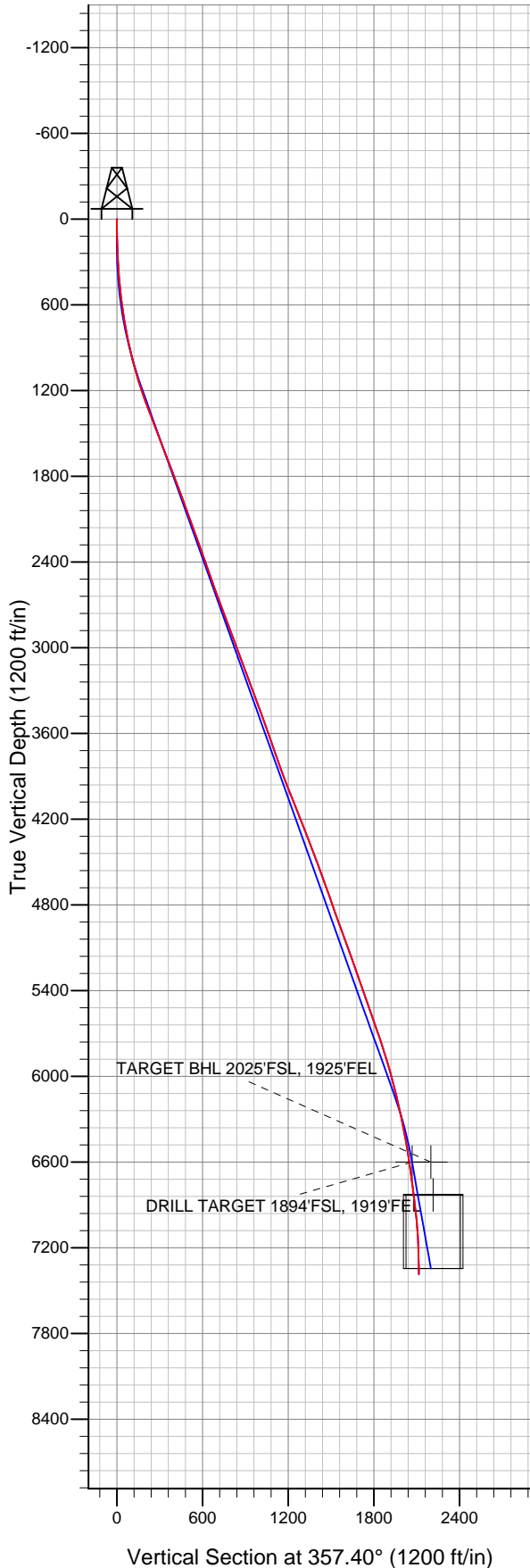
### LEGEND

- ◆ Booth 10-26, Wellbore #1, Plan #2 (10-26-11) V0
- Wellbore #1
- Survey #1

## Final Survey Plot

Projected Final Survey -  
 7733'MD & 7387'TVD @ 2114'VS  
 1.0 deg Inc 43.1 deg AZ

Project: SEC.35-T7N-R65W  
 Site: Booth 15-26 Pad Sec.35-T7N-R65W  
 Well: Booth 10-26  
 Plan: Wellbore #1





**Directional**

# **BAYSWATER EXPLORATION & PRODUCTION**

**SEC.35-T7N-R65W**

**Booth 15-26 Pad Sec.35-T7N-R65W**

**Booth 10-26**

**Wellbore #1**

**Survey: Survey #1**

## **Standard Survey Report**

**30 July, 2012**

Survey	Wellbore Data									
	Measured Depth (ft)	Inclination (°)	Azimuth (°)	Vertical Depth (ft)	+N-S (ft)	+E-W (ft)	Vertical Section (ft)	Dogleg Rate (°/100ft)	Build Rate (°/100ft)	Turn Rate (°/100ft)
Main Survey	0.0	0.00	0.00	0.0	0.0	0.0	0.0	0.00	0.00	0.00
	184.0	2.90	300.40	183.9	2.4	-4.0	2.5	1.58	1.58	0.00
	275.0	3.80	309.30	274.8	5.4	-8.3	5.8	1.14	0.99	9.78
	366.0	4.50	330.50	365.5	10.4	-12.4	11.0	1.84	0.77	23.30
	457.0	6.00	355.00	456.2	18.3	-14.6	18.9	2.93	1.65	26.92
	549.0	6.70	359.20	547.6	28.5	-15.1	29.1	0.91	0.76	4.57
	645.0	8.40	349.70	642.8	41.0	-16.4	41.7	2.19	1.77	-9.90
	701.0	9.60	347.40	698.1	49.5	-18.2	50.3	2.24	2.14	-4.11
	796.0	10.70	355.00	791.6	66.1	-20.7	66.9	1.82	1.16	8.00
	891.0	11.90	2.50	884.7	84.6	-21.0	85.5	1.99	1.26	7.89
	986.0	14.20	7.90	977.3	106.0	-19.0	106.7	2.74	2.42	5.68
	1,080.0	16.70	8.00	1,067.9	130.8	-15.5	131.3	2.66	2.66	0.11

<b>Company:</b>	BAYSWATER EXPLORATION & PRODUCTION	<b>Local Co-ordinate Reference:</b>	Well Booth 10-26
<b>Project:</b>	SEC.35-T7N-R65W	<b>TVD Reference:</b>	WELL @ 4844.0ft (Original Well Elev)
<b>Site:</b>	Booth 15-26 Pad Sec.35-T7N-R65W	<b>MD Reference:</b>	WELL @ 4844.0ft (Original Well Elev)
<b>Well:</b>	Booth 10-26	<b>North Reference:</b>	True
<b>Wellbore:</b>	Wellbore #1	<b>Survey Calculation Method:</b>	Minimum Curvature
<b>Design:</b>	Wellbore #1	<b>Database:</b>	Landmark

Survey									
Measured Depth (ft)	Inclination (°)	Azimuth (°)	Vertical Depth (ft)	+N/-S (ft)	+E/-W (ft)	Vertical Section (ft)	Dogleg Rate (°/100ft)	Build Rate (°/100ft)	Turn Rate (°/100ft)
1,175.0	18.20	7.90	1,158.5	159.0	-11.6	159.3	1.58	1.58	-0.11
1,270.0	20.40	7.10	1,248.2	190.1	-7.5	190.2	2.33	2.32	-0.84
1,365.0	20.70	6.30	1,337.1	223.2	-3.6	223.1	0.43	0.32	-0.84
1,460.0	20.80	1.80	1,426.0	256.8	-1.2	256.6	1.68	0.11	-4.74
1,555.0	20.80	1.20	1,514.8	290.5	-0.3	290.2	0.22	0.00	-0.63
1,650.0	21.20	357.70	1,603.5	324.5	-0.7	324.2	1.39	0.42	-3.68
1,745.0	21.50	356.70	1,692.0	359.1	-2.4	358.8	0.50	0.32	-1.05
1,840.0	20.60	357.80	1,780.6	393.1	-4.0	392.9	1.03	-0.95	1.16
1,935.0	20.50	353.90	1,869.6	426.4	-6.4	426.2	1.44	-0.11	-4.11
2,030.0	20.20	356.80	1,958.6	459.3	-9.1	459.2	1.11	-0.32	3.05
2,125.0	20.40	355.70	2,047.7	492.2	-11.3	492.2	0.45	0.21	-1.16
2,220.0	19.70	356.80	2,137.0	524.7	-13.4	524.8	0.84	-0.74	1.16
2,315.0	19.60	353.50	2,226.5	556.5	-16.1	556.7	1.17	-0.11	-3.47
2,410.0	19.60	355.50	2,316.0	588.2	-19.2	588.5	0.71	0.00	2.11
2,505.0	20.10	355.00	2,405.3	620.4	-21.8	620.7	0.56	0.53	-0.53
2,600.0	18.90	355.10	2,494.9	652.0	-24.6	652.4	1.26	-1.26	0.11
2,695.0	19.40	353.30	2,584.6	683.0	-27.7	683.5	0.81	0.53	-1.89
2,789.0	20.80	353.00	2,672.9	715.0	-31.6	715.7	1.49	1.49	-0.32
2,884.0	21.00	354.10	2,761.6	748.7	-35.4	749.5	0.46	0.21	1.16
2,979.0	20.80	356.40	2,850.4	782.5	-38.2	783.4	0.89	-0.21	2.42
3,074.0	19.80	358.20	2,939.5	815.4	-39.8	816.4	1.24	-1.05	1.89
3,169.0	20.80	357.00	3,028.6	848.3	-41.1	849.3	1.14	1.05	-1.26
3,263.0	20.10	356.90	3,116.6	881.1	-42.9	882.2	0.75	-0.74	-0.11
3,358.0	20.70	359.00	3,205.7	914.2	-44.1	915.3	1.00	0.63	2.21
3,453.0	20.90	358.80	3,294.5	947.9	-44.7	949.0	0.22	0.21	-0.21
3,548.0	20.90	357.70	3,383.2	981.8	-45.8	982.9	0.41	0.00	-1.16
3,643.0	19.40	353.80	3,472.4	1,014.4	-48.1	1,015.6	2.12	-1.58	-4.11
3,738.0	19.10	351.40	3,562.1	1,045.5	-52.2	1,046.8	0.89	-0.32	-2.53
3,833.0	19.80	358.10	3,651.7	1,076.9	-55.0	1,078.3	2.46	0.74	7.05
3,927.0	19.10	357.80	3,740.3	1,108.2	-56.1	1,109.6	0.75	-0.74	-0.32
4,022.0	19.80	358.90	3,829.9	1,139.8	-57.0	1,141.2	0.83	0.74	1.16
4,117.0	20.20	357.50	3,919.2	1,172.3	-58.1	1,173.7	0.66	0.42	-1.47
4,212.0	21.50	357.20	4,008.0	1,206.1	-59.6	1,207.5	1.37	1.37	-0.32
4,307.0	22.30	356.20	4,096.1	1,241.5	-61.7	1,243.0	0.93	0.84	-1.05
4,402.0	22.40	356.70	4,184.0	1,277.5	-63.9	1,279.1	0.23	0.11	0.53
4,496.0	21.60	357.60	4,271.1	1,312.7	-65.7	1,314.3	0.92	-0.85	0.96
4,591.0	21.00	354.50	4,359.7	1,347.1	-68.0	1,348.8	1.34	-0.63	-3.26
4,686.0	20.10	358.10	4,448.6	1,380.4	-70.2	1,382.1	1.63	-0.95	3.79
4,781.0	19.60	355.90	4,538.0	1,412.6	-71.9	1,414.4	0.95	-0.53	-2.32
4,876.0	20.30	356.20	4,627.3	1,444.9	-74.1	1,446.8	0.74	0.74	0.32
4,971.0	19.80	358.20	4,716.5	1,477.4	-75.7	1,479.3	0.89	-0.53	2.11
5,066.0	19.10	359.60	4,806.1	1,509.1	-76.3	1,511.0	0.89	-0.74	1.47
5,161.0	20.20	355.90	4,895.6	1,541.0	-77.6	1,542.9	1.75	1.16	-3.89
5,256.0	19.90	355.80	4,984.8	1,573.4	-80.0	1,575.4	0.32	-0.32	-0.11
5,350.0	19.30	355.90	5,073.4	1,604.9	-82.3	1,607.0	0.64	-0.64	0.11
5,445.0	21.40	355.20	5,162.4	1,637.8	-84.8	1,640.0	2.23	2.21	-0.74
5,540.0	19.30	355.00	5,251.5	1,670.7	-87.6	1,673.0	2.21	-2.21	-0.21
5,635.0	18.90	354.50	5,341.3	1,701.7	-90.5	1,704.0	0.45	-0.42	-0.53
5,730.0	18.50	354.20	5,431.2	1,732.0	-93.5	1,734.5	0.43	-0.42	-0.32
5,825.0	19.40	359.70	5,521.1	1,762.8	-95.1	1,765.3	2.10	0.95	5.79
5,920.0	19.90	1.80	5,610.6	1,794.7	-94.7	1,797.2	0.91	0.53	2.21
6,015.0	19.30	1.10	5,700.1	1,826.6	-93.9	1,829.0	0.68	-0.63	-0.74
6,109.0	18.10	0.20	5,789.1	1,856.7	-93.5	1,859.0	1.31	-1.28	-0.96

<b>Company:</b>	BAYSWATER EXPLORATION & PRODUCTION	<b>Local Co-ordinate Reference:</b>	Well Booth 10-26
<b>Project:</b>	SEC.35-T7N-R65W	<b>TVD Reference:</b>	WELL @ 4844.0ft (Original Well Elev)
<b>Site:</b>	Booth 15-26 Pad Sec.35-T7N-R65W	<b>MD Reference:</b>	WELL @ 4844.0ft (Original Well Elev)
<b>Well:</b>	Booth 10-26	<b>North Reference:</b>	True
<b>Wellbore:</b>	Wellbore #1	<b>Survey Calculation Method:</b>	Minimum Curvature
<b>Design:</b>	Wellbore #1	<b>Database:</b>	Landmark

Survey									
Measured Depth (ft)	Inclination (°)	Azimuth (°)	Vertical Depth (ft)	+N/-S (ft)	+E/-W (ft)	Vertical Section (ft)	Dogleg Rate (°/100ft)	Build Rate (°/100ft)	Turn Rate (°/100ft)
6,204.0	16.50	358.40	5,879.8	1,885.0	-93.8	1,887.3	1.78	-1.68	-1.89
6,299.0	16.00	357.80	5,971.0	1,911.5	-94.7	1,913.9	0.56	-0.53	-0.63
6,394.0	14.50	0.30	6,062.7	1,936.5	-95.2	1,938.8	1.72	-1.58	2.63
6,489.0	13.40	0.70	6,154.8	1,959.4	-95.0	1,961.7	1.16	-1.16	0.42
6,584.0	12.20	1.10	6,247.5	1,980.4	-94.6	1,982.7	1.27	-1.26	0.42
6,680.0	11.40	2.60	6,341.5	2,000.1	-94.0	2,002.3	0.89	-0.83	1.56
6,775.0	10.30	3.00	6,434.8	2,017.9	-93.1	2,020.1	1.16	-1.16	0.42
6,870.0	9.50	3.40	6,528.3	2,034.2	-92.2	2,036.3	0.85	-0.84	0.42
6,945.5	8.70	3.48	6,602.9	2,046.2	-91.5	2,048.2	1.05	-1.05	0.10
<b>DRILL TARGET 1894'FSL, 1919'FEL</b>									
6,965.0	8.50	3.50	6,622.2	2,049.1	-91.3	2,051.1	1.05	-1.05	0.11
<b>TARGET BHL 2025'FSL, 1925'FEL</b>									
7,060.0	7.60	3.70	6,716.2	2,062.3	-90.5	2,064.3	0.95	-0.95	0.21
7,155.0	6.70	352.90	6,810.5	2,074.1	-90.8	2,076.1	1.70	-0.95	-11.37
7,192.0	6.91	348.60	6,847.3	2,078.4	-91.5	2,080.4	1.48	0.56	-11.63
<b>LEGAL BOX 400' X 400' 2037'FSL, 2021'FEL</b>									
7,250.0	7.30	342.40	6,904.8	2,085.4	-93.3	2,087.5	1.48	0.68	-10.69
7,345.0	5.80	355.90	6,999.2	2,095.9	-95.5	2,098.1	2.25	-1.58	14.21
7,439.0	3.80	23.30	7,092.9	2,103.5	-94.6	2,105.6	3.18	-2.13	29.15
7,535.0	2.50	32.80	7,188.7	2,108.2	-92.2	2,110.2	1.45	-1.35	9.90
7,630.0	1.50	39.60	7,283.6	2,110.9	-90.3	2,112.8	1.08	-1.05	7.16
7,690.0	1.00	43.10	7,343.6	2,111.9	-89.4	2,113.8	0.84	-0.83	5.83
7,730.0	1.00	43.10	7,383.6	2,112.4	-88.9	2,114.2	0.00	0.00	0.00
7,733.0	1.00	43.10	7,386.6	2,112.4	-88.9	2,114.3	0.00	0.00	0.00

Checked By: _____	Approved By: _____	Date: _____
-------------------	--------------------	-------------