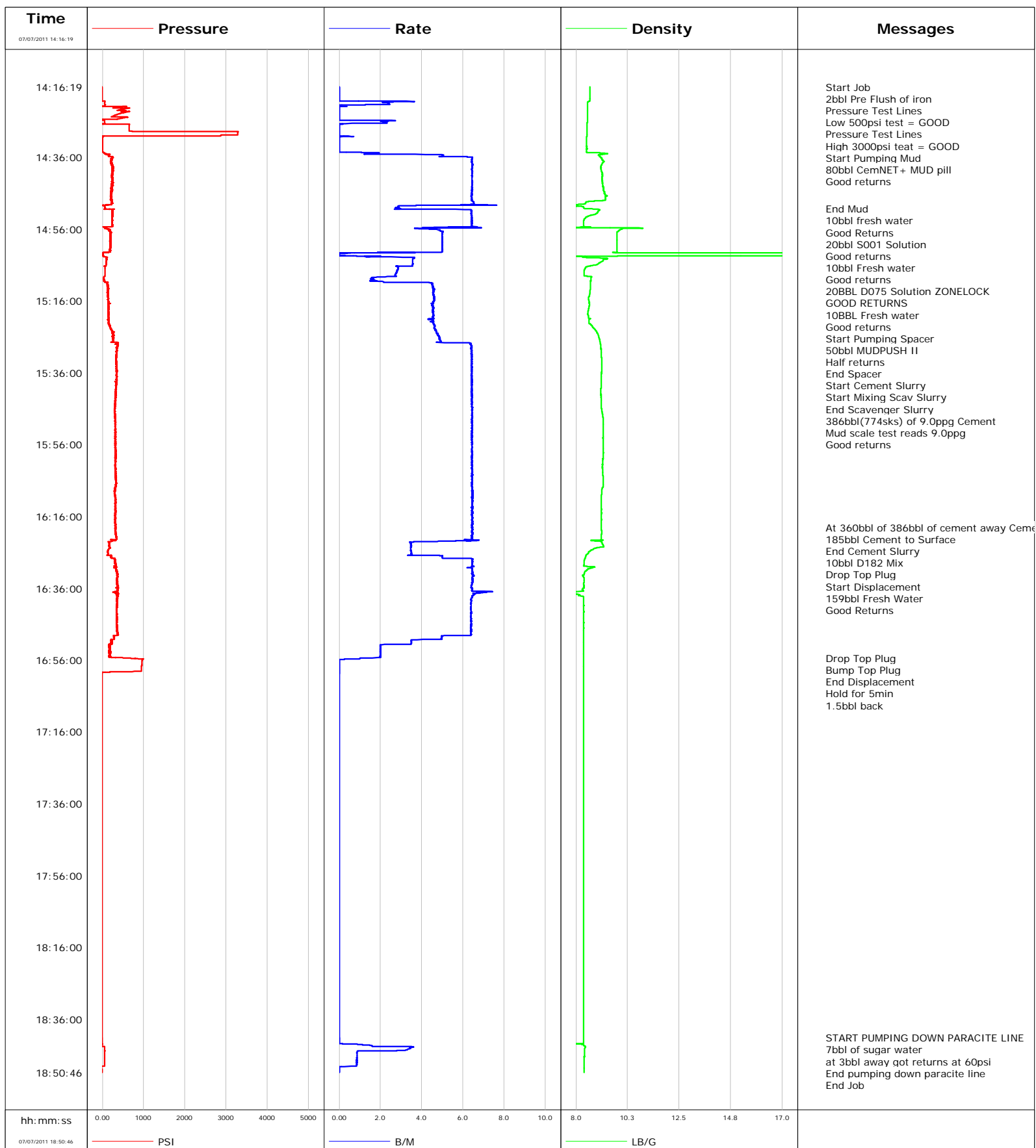


Well DW8608A-33P
Field GRAND VALLEY
Engineer Dustin Krueger
Country United States

Client Encana oil Gas
SIR No. 000601291
Job Type 9 5/8 SURFACE
Job Date 07-07-11



Cementing Service Report

				Customer Encana oil & Gas				Job Number 000601291										
Well DW8608A-33P DW8608A-33P				Location (legal) .				Schlumberger Location Grand Junction				Job Start Jul/07/2011						
Field GRAND VALLEY			Formation Name/Type Shale			Deviation deg		Bit Size 14.8 in		Well MD 2097.0 ft		Well TVD 2097.0 ft						
County Garfield			State/Province Colorado			BHP psi		BHST 107 degF		BHCT 91 degF		Pore Press. Gradient lb/gal						
Well Master 0631259650			API/UWI 05045204390000															
Rig Name Patterson 308		Drilled For Gas		Service Via Land		Casing/Liner												
						Depth, ft		Size, in		Weight, lb/ft		Grade		Thread				
Offshore Zone		Well Class New		Well Type Development		120.0		16.0		65.0		J55		8RD				
						2097.0		9.6		36.0		J55		8RD				
Drilling Fluid Type			Max. Density lb/gal		Plastic Viscosity 20.000 cP		Tubing/Drill Pipe											
							T/D		Depth, ft		Size, in		Weight, lb/ft		Grade		Thread	
Service Line Cementing		Job Type 9 5/8 SURFACE																
Max. Allowed Tub. Press 3000 psi		Max. Allowed Ann. Press 1500 psi		WH Connection Single Cement head		Perforations/Open Hole												
						Top, ft		Bottom, ft		shot/ft		No. of Shots		Total Interval ft				
						ft		ft										
						ft		ft						Diameter in				
						ft		ft										
Service Instructions Provide services and equipment to Cement a 9 5/8 surface as per designn using: 80bbl Mud Pill with CemNET+ 10bbl fresh water 20bbl S001 Solution 10bbl fresh water 30bbl d075 Solution 10bbl fresh water 50bbl MUDPUSH II 386bbl(774sks) of 9.0 LiteCRETE 159bbl fresh water Displacement						Treat Down Casing		Displacement 158.0 bbl		Packer Type		Packer Depth ft						
						Tubing Vol. bbl		Casing Vol. 162.0 bbl		Annular Vol. 256.0 bbl		Openhole Vol. 420.0 bbl						
Casing/Tubing Secured <input checked="" type="checkbox"/>		1 Hole Vol. Circulated prior to Cement <input checked="" type="checkbox"/>		Casing Tools				Squeeze Job										
Lift Pressure 300 psi				Shoe Type Guide				Squeeze Type										
Pipe Rotated <input type="checkbox"/>		Pipe Reciprocated <input type="checkbox"/>		Shoe Depth 2097.0 ft				Tool Type										
No. Centralizers		Top Plugs 1		Bottom Plugs		Stage Tool Type				Tool Depth ft								
Cement Head Type Single				Stage Tool Depth ft				Tail Pipe Size in										
Job Scheduled For Jul/07/2011 12:00		Arrived on Location Jul/07/2011 12:00		Leave Location Jul/07/2011 20:00		Collar Type Float				Tail Pipe Depth ft								
						Collar Depth 44.0 ft				Sqz. Total Vol. bbl								
Date	Time 24-hr clock	Treating Pressure PSI	Flow Rate B/M	Density LB/G	Volume BBL	Message												
07/07/2011	14:16:19	-8	0.0	8.62	56.6	Started Acquisition												
07/07/2011	14:16:20	-8	0.0	8.62	56.6	Start Job												
07/07/2011	14:16:23	-8	0.0	8.62	56.6	2bbl Pre Flush of iron												
07/07/2011	14:16:29	-8	0.0	8.62	56.6	Pressure Test Lines												
07/07/2011	14:16:32	-8	0.0	8.62	56.6	Low 500psi test = GOOD												
07/07/2011	14:16:35	-8	0.0	8.62	56.6	Pressure Test Lines												
07/07/2011	14:16:38	-8	0.0	8.62	56.6	High 3000psi teat = GOOD												
07/07/2011	14:16:51	-8	0.0	8.62	56.6	Start Pumping Mud												
07/07/2011	14:16:54	-8	0.0	8.62	56.6	80bbl CemNET+ MUD pill												
07/07/2011	14:18:49	-9	0.0	8.62	56.6													
07/07/2011	14:21:19	58	0.0	8.50	2.4													
07/07/2011	14:23:49	427	0.0	8.50	2.6													
07/07/2011	14:26:19	56	0.0	8.50	4.0													
07/07/2011	14:28:49	3285	0.0	8.48	4.6													
07/07/2011	14:31:19	4	0.0	8.47	4.7													
07/07/2011	14:33:49	3	0.0	8.47	4.7													
07/07/2011	14:36:19	210	0.0	9.12	7.0													
07/07/2011	14:38:49	235	0.0	9.10	23.1													
07/07/2011	14:41:19	225	4.8	9.15	39.2													
07/07/2011	14:43:49	231	4.9	9.16	55.3													
07/07/2011	14:46:19	225	4.9	9.26	71.4													

Well DW8608A-33P DW8608A-33P			Field GRAND VALLEY		Job Start Jul/07/2011	Customer Encana oil & Gas	Job Number 000601291
Date	Time 24-hr clock	Treating Pressure PSI	Flow Rate B/M	Density LB/G	Volume BBL	Message	
07/07/2011	14:50:16	73	4.9	8.46	93.9	End Mud	
07/07/2011	14:50:31	242	4.9	8.99	94.7	10bbl fresh water	
07/07/2011	14:50:32	251	4.9	9.01	94.8	20bbl S001 Solution	
07/07/2011	14:51:19	250	4.9	8.95	99.9		
07/07/2011	14:53:49	231	4.8	8.33	115.9		
07/07/2011	14:56:12	169	4.9	9.92	129.8	10bbl Fresh water	
07/07/2011	14:56:13	169	4.9	9.90	129.8	20BBL D075 Solution ZONELOCK	
07/07/2011	14:56:19	186	4.8	9.88	130.3		
07/07/2011	14:58:35	210	4.8	9.79	141.6	10BBL Fresh water	
07/07/2011	14:58:49	195	4.7	9.79	142.8		
07/07/2011	15:01:19	194	4.6	9.79	155.3		
07/07/2011	15:03:49	119	4.6	8.29	162.0		
07/07/2011	15:06:19	40	4.7	8.55	170.9		
07/07/2011	15:08:49	67	4.2	8.34	177.9		
07/07/2011	15:09:16	35	1.0	8.69	179.1	Start Pumping Spacer	
07/07/2011	15:09:18	34	0.4	8.69	179.2	50bbl MUDPUSH II	
07/07/2011	15:11:19	131	4.7	8.63	184.2		
07/07/2011	15:13:49	133	4.9	8.60	195.6		
07/07/2011	15:16:19	149	4.9	8.58	207.0		
07/07/2011	15:18:49	153	5.2	8.53	218.4		
07/07/2011	15:21:19	149	4.0	8.56	229.7		
07/07/2011	15:22:42	172	4.0	8.66	236.0	End Spacer	
07/07/2011	15:22:43	172	4.0	8.67	236.1	Start Cement Slurry	
07/07/2011	15:22:45	173	4.0	8.67	236.3	Start Mixing Scav Slurry	
07/07/2011	15:23:49	195	3.0	8.80	241.2		
07/07/2011	15:26:19	269	3.6	9.01	253.1		
07/07/2011	15:26:52	264	3.7	9.03	255.8	386bbl(774sks) of 9.0ppg Cement	
07/07/2011	15:26:53	264	3.7	9.03	255.9	Good returns	
07/07/2011	15:28:49	361	3.8	9.08	267.1		
07/07/2011	15:31:19	329	3.9	9.11	283.2		
07/07/2011	15:33:49	340	3.8	9.12	299.3		
07/07/2011	15:36:19	341	3.8	9.11	315.3		
07/07/2011	15:38:49	330	3.8	9.10	331.4		
07/07/2011	15:41:19	336	3.9	9.09	347.5		
07/07/2011	15:43:49	309	3.9	9.10	363.6		
07/07/2011	15:46:19	295	4.0	9.12	379.7		
07/07/2011	15:48:49	315	3.6	9.18	395.8		
07/07/2011	15:51:19	320	3.7	9.19	411.9		
07/07/2011	15:53:49	318	3.9	9.18	428.0		
07/07/2011	15:56:19	311	3.7	9.18	444.1		
07/07/2011	15:58:49	324	3.7	9.19	460.2		
07/07/2011	16:01:19	312	3.7	9.16	476.3		
07/07/2011	16:03:49	323	3.5	9.17	492.4		
07/07/2011	16:06:19	333	3.5	9.19	508.5		
07/07/2011	16:08:49	306	3.5	9.13	524.6		
07/07/2011	16:11:19	322	3.3	9.10	540.8		
07/07/2011	16:13:49	318	3.6	9.11	556.9		
07/07/2011	16:16:19	315	3.7	9.11	573.0		
07/07/2011	16:18:49	322	3.7	9.10	589.2		
07/07/2011	16:19:00	323	3.7	9.10	590.3	At 360bbl of 386bbl of cement away Cement to Surface	
07/07/2011	16:20:00	320	3.5	9.12	596.8	185bbl Cement to Surface	
07/07/2011	16:21:19	334	3.6	9.11	605.3		
07/07/2011	16:23:46	158	3.8	9.17	618.6	End Cement Slurry	
07/07/2011	16:23:49	170	3.8	9.18	618.8		

Well DW8608A-33P DW8608A-33P			Field GRAND VALLEY		Job Start Jul/07/2011		Customer Encana oil & Gas		Job Number 000601291	
Date	Time 24-hr clock	Treating Pressure PSI		Flow Rate B/M	Density LB/G		Volume BBL	Message		
07/07/2011	16:24:04	165		3.9	9.19		619.7	Drop Top Plug		
07/07/2011	16:24:05	169		3.9	9.19		619.7	Start Displacement		
07/07/2011	16:26:19	137		4.3	8.53		627.5			
07/07/2011	16:28:49	310		4.9	8.35		640.8			
07/07/2011	16:31:19	354		5.0	8.40		657.0			
07/07/2011	16:33:49	346		4.9	8.35		673.1			
07/07/2011	16:36:09	373		5.0	8.31		688.1	159bbl Fresh Water		
07/07/2011	16:36:13	377		5.0	8.29		688.6	Good Returns		
07/07/2011	16:36:19	370		5.0	8.27		689.2			
07/07/2011	16:38:49	374		4.8	8.34		705.6			
07/07/2011	16:41:19	357		0.0	8.34		721.6			
07/07/2011	16:43:49	348		0.0	8.34		737.6			
07/07/2011	16:46:19	347		0.0	8.34		753.6			
07/07/2011	16:48:49	368		0.0	8.34		769.5			
07/07/2011	16:51:19	205		0.0	8.34		780.9			
07/07/2011	16:53:49	162		0.0	8.34		786.3			
07/07/2011	16:55:28	667		0.0	8.34		789.5	Drop Top Plug		
07/07/2011	16:55:45	979		0.0	8.34		789.8	End Displacement		
07/07/2011	16:56:04	967		0.0	8.34		789.8	Hold for 5min		
07/07/2011	16:56:19	962		0.0	8.34		789.8			
07/07/2011	16:58:49	948		0.0	8.34		789.8			
07/07/2011	18:41:09	-5		0.0	8.33		798.2	START PUMPING DOWN PARACITE LINE		
07/07/2011	18:41:10	-5		0.0	8.33		798.2	at 3bbl away got returns at 60psi		
07/07/2011	18:41:19	-5		0.0	8.33		798.2			
07/07/2011	18:43:49	56		0.0	8.43		799.9			
07/07/2011	18:46:19	57		0.0	8.37		804.5			
07/07/2011	18:48:49	57		0.0	8.35		806.6			

Post Job Summary

Average Pump Rates, bbl/min					Volume of Fluid Injected, bbl						
Slurry 5.1		N2	Mud 5.5	Maximum Rate 7.6	Total Slurry 386.0		Mud 80.0	Spacer 50.0	N2		
Treating Pressure Summary, psi					Breakdown Fluid						
Maximum 3289	Final -7	Average 275	Bump Plug to 0	Breakdown 275	Type FreshWater		Volume 873.0 bbl		Density 8.34 lb/gal		
Avg. N2 Percent %		Designed Slurry Volume 386.0 bbl		Displacement 159.0 bbl		Mix Water Temp 65 degF		Cement Circulated to Surface? <input checked="" type="checkbox"/>		Volume 185.0 bbl	
								Washed Thru Perfs <input type="checkbox"/>		To ft	
Customer or Authorized Representative Randy Burke				Schlumberger Supervisor Dustin Krueger				Circulation Lost <input checked="" type="checkbox"/>		Job Completed <input checked="" type="checkbox"/>	
								-		-	