

**HALLIBURTON**

---

# **WILLIAMS PRODUCTION RMT INC - EBUS**

---

**TR 12-1-698  
TRAIL RIDGE  
Garfield County , Colorado**

## **Cement Surface Casing**

**08-Sep-2011**

## **Post Job Report**

*The Road to Excellence Starts with Safety*

Sold To #: 300721	Ship To #: 2876571	Quote #:	Sales Order #: 8449115
Customer: WILLIAMS PRODUCTION RMT INC - EBUS	Customer Rep: OAKS, RICK		
Well Name: TR	Well #: 12-1-698	API/UWI #: 05-045-15971	
Field: TRAIL RIDGE	City (SAP): PARACHUTE	County/Parish: Garfield	State: Colorado
Lat: N 39.562 deg. OR N 39 deg. 33 min. 41.53 secs.	Long: W 108.285 deg. OR W -109 deg. 42 min. 53.41 secs.		
Contractor: H&P 278	Rig/Platform Name/Num: H&P 278		
Job Purpose: Cement Surface Casing			
Well Type: Development Well	Job Type: Cement Surface Casing		
Sales Person: KOHL, KYLE	Srv Supervisor: YOUNG, JEREMY	MBU ID Emp #: 418013	

**Job Personnel**

HES Emp Name	Exp Hrs	Emp #	HES Emp Name	Exp Hrs	Emp #	HES Emp Name	Exp Hrs	Emp #
BECK, MICHAEL George	13.5	489151	KUKUS, CHRISTOPHER A	13.5	413952	LESTER, LEVI William	13.5	474117
NELSON, RYAN Cody	6	386514	WALPOLE, DARREN Livingston	13.5	485294	YOUNG, JEREMY R	13.5	418013

**Equipment**

HES Unit #	Distance-1 way	HES Unit #	Distance-1 way	HES Unit #	Distance-1 way	HES Unit #	Distance-1 way
10897817	90 mile	10951245	90 mile	10994447	90 mile	11307428	90 mile
11410662	90 mile	11560046	90 mile	11562538	90 mile	11749220	90 mile
HBL-2000-3	90 mile						

**Job Hours**

Date	On Location Hours	Operating Hours	Date	On Location Hours	Operating Hours	Date	On Location Hours	Operating Hours
09/08/2011	13.5	6						

**TOTAL** Total is the sum of each column separately

**Job**

**Job Times**

Formation Name							Date	Time	Time Zone
Formation Depth (MD)	Top			Bottom		Called Out	07 - Sep - 2011	19:00	MST
Form Type			BHST			On Location	08 - Sep - 2011	02:00	MST
Job depth MD	2568. ft		Job Depth TVD	2568. ft		Job Started	08 - Sep - 2011	10:04	MST
Water Depth			Wk Ht Above Floor	3. ft		Job Completed	08 - Sep - 2011	13:59	MST
Perforation Depth (MD)	From			To		Departed Loc	08 - Sep - 2011	15:30	MST

**Well Data**

Description	New / Used	Max pressure psig	Size in	ID in	Weight lbm/ft	Thread	Grade	Top MD ft	Bottom MD ft	Top TVD ft	Bottom TVD ft
OPEN HOLE				14.75				.	2610.		
SURFACE CASING	Unknown		9.625	8.921	36.			.	2568.		

**Sales/Rental/3<sup>rd</sup> Party (HES)**

Description	Qty	Qty uom	Depth	Supplier
ADC (AUTO DENSITY CTRL) SYS, /JOB,ZI	1	JOB		
R/A DENSOMETER W/CHART RECORDER,/JOB,ZI	1	JOB		
PLUG,CMTG,TOP,9 5/8,HWE,8.16 MIN/9.06 MA	1	EA		

**Tools and Accessories**

Type	Size	Qty	Make	Depth	Type	Size	Qty	Make	Depth	Type	Size	Qty	Make
Guide Shoe					Packer					Top Plug	9.625	1	HES
Float Shoe					Bridge Plug					Bottom Plug			
Float Collar					Retainer					SSR plug set			
Insert Float										Plug Container	9.625	1	HES
Stage Tool										Centralizers			

**Miscellaneous Materials**

Gelling Agt	Conc	Surfactant	Conc	Acid Type	Qty	Conc	%
-------------	------	------------	------	-----------	-----	------	---

Treatment Fld	Conc	Inhibitor	Conc	Sand Type	Size	Qty				
Fluid Data										
Stage/Plug #: 1										
Fluid #	Stage Type	Fluid Name	Qty	Qty uom	Mixing Density lbm/gal	Yield ft <sup>3</sup> /sk	Mix Fluid Gal/sk	Rate bbl/min	Total Mix Fluid Gal/sk	
1	Fresh Water	FRESH WATER	10.00	bbl	8.34	.0	.0	4		
2	SUPER FLUSH - XLC	SUPERFLUSH-XLC - SBM (549694)	50.00	bbl	11.	.0	.0	4		
3	Fresh Water	FRESH WATER	10.00	bbl	8.33	.0	.0	4		
4	ExtendaCem 303 + LCM	EXTENDACEM (TM) SYSTEM (452981)	1100.0	sacks	12.3	2.23	12.21	5	12.21	
		12.21 Gal	FRESH WATER							
5	ExtendaCem 303 Tail	EXTENDACEM (TM) SYSTEM (452981)	250.0	sacks	12.6	2.07	11.04	5	11.04	
		11.04 Gal	FRESH WATER							
6	Displacement	FRESH WATER	195.10	bbl	8.34	.0	.0	5		
Calculated Values			Pressures		Volumes					
Displacement	195.1	Shut In: Instant		Lost Returns	YES	Cement Slurry	529.1	Pad		
Top Of Cement	SURFACE	5 Min		Cement Returns	NO	Actual Displacement	195.1	Treatment		
Frac Gradient		15 Min		Spacers	70	Load and Breakdown		Total Job	797.4	
Rates										
Circulating		Mixing	5	Displacement	5	Avg. Job	5			
Cement Left In Pipe	Amount	44.5 ft	Reason	Shoe Joint						
Frac Ring # 1 @	ID	Frac ring # 2 @	ID	Frac Ring # 3 @	ID	Frac Ring # 4 @	ID			
The Information Stated Herein Is Correct				Customer Representative Signature						



*The Road to Excellence Starts with Safety*

Sold To #: 300721	Ship To #: 2876571	Quote #:	Sales Order #: 8449115
Customer: WILLIAMS PRODUCTION RMT INC - EBUS	Customer Rep: OAKS, RICK		
Well Name: TR	Well #: 12-1-698	API/UWI #: 05-045-15971	
Field: TRAIL RIDGE	City (SAP): PARACHUTE	County/Parish: Garfield	State: Colorado
Legal Description:			
Lat: N 39.562 deg. OR N 39 deg. 33 min. 41.53 secs.		Long: W 108.285 deg. OR W -109 deg. 42 min. 53.41 secs.	
Contractor: H&P 278	Rig/Platform Name/Num: H&P 278		
Job Purpose: Cement Surface Casing	Ticket Amount:		
Well Type: Development Well	Job Type: Cement Surface Casing		
Sales Person: KOHL, KYLE	Srv Supervisor: YOUNG, JEREMY	MBU ID Emp #: 418013	

Activity Description	Date/Time	Cht #	Rate bbl/ min	Volume bbl		Pressure psig		Comments
				Stage	Total	Tubing	Casing	
Call Out	09/07/2011 19:00							TD 2610 FT, TP 2568 FT, SHOE 44.49 FT, HOLE 14 3/4 IN, MUD WT 8.5 PPG, CSG 9 5/8 IN 36 LB/FT
Pre-Convoy Safety Meeting	09/07/2011 21:20							WITH ALL HES PERSONNEL
Crew Leave Yard	09/07/2011 21:30							
Arrive At Loc	09/08/2011 02:00							RIG WAS RUNNING CASING UPON HES ARRIVAL
Assessment Of Location Safety Meeting	09/08/2011 08:30							WITH ALL HES PERSONNEL
Other	09/08/2011 08:40							SPOT EQUIPMENT
Pre-Rig Up Safety Meeting	09/08/2011 08:50							WITH ALL HES PERSONNEL
Rig-Up Equipment	09/08/2011 09:00							
Pre-Job Safety Meeting	09/08/2011 09:50							WITH ALL PERSONNEL ON LOCATION
Start Job	09/08/2011 10:04							
Other	09/08/2011 10:04		2	2			28.0	FILL LINES WITH FRESH WATER
Test Lines	09/08/2011 10:06							TEST LINES TO 2900 PSI. PRESSURE HOLDING
Pump Spacer 1	09/08/2011 10:12		4	10			76.0	FRESH WATER
Pump Spacer 2	09/08/2011 10:15		4	50			85.0	SUPER FLUSH XLC. TRANSPORT ON LOCATION FOR 11 HRS
Pump Spacer 1	09/08/2011 10:29		4	10			85.0	FRESH WATER

Sold To #: 300721

Ship To #: 2876571

Quote #:

Sales Order #:

8449115

SUMMIT Version: 7.2.27

Sunday, September 11, 2011 12:05:00

## Cementing Job Log

Activity Description	Date/Time	Cht #	Rate bbl/min	Volume bbl		Pressure psig		Comments
				Stage	Total	Tubing	Casing	
Pump Lead Cement	09/08/2011 10:35		5	436.9			110.0	1100 SKS AT 12.3 PPG, 2.23 FT3/SK, 12.21 GAL/SK. 7 BOXES OF TUFF FIBER ADDED TO LEAD CEMENT. PUMPED LEAD CEMENT AT 6.5 BPM UNTIL PIPE WAS FULL OF CEMENT THEN SLOWED RATE TO 5 BPM AS PER COMPANY REP.
Pump Tail Cement	09/08/2011 12:30		5	92.2				250 SKS AT 12.6 PPG, 2.07 FT3/SK, 11.04 GAL/SK
Shutdown	09/08/2011 12:55							
Drop Top Plug	09/08/2011 12:56							PLUG LAUNCHED
Pump Displacement	09/08/2011 12:57		5	185.1			186.0	FRESH WATER
Slow Rate	09/08/2011 13:34		2	10			78.0	SLOW RATE 10 BBLS PRIOR TO CALCULATED DISPLACEMENT
Bump Plug	09/08/2011 13:41		2		195.1		620.0	PLUG BUMPED
Check Floats	09/08/2011 13:44							FLOATS HOLDING
Pump Water	09/08/2011 13:54		2	10		680.0		PUMP SUGAR WATER DOWN PARASITE STRING
Shutdown	09/08/2011 13:58							
End Job	09/08/2011 13:59							PIPE WAS STATIC DURING JOB. NO CIRCULATION THROUGHOUT JOB. HES DID NOT RETURN CEMENT TO SURFACE.
Pre-Rig Down Safety Meeting	09/08/2011 14:10							WITH ALL HES PERSONNEL
Rig-Down Equipment	09/08/2011 14:20							
Pre-Convoy Safety Meeting	09/08/2011 15:20							WITH ALL HES PERSONNEL
Crew Leave Location	09/08/2011 15:30							

Sold To # : 300721

Ship To # : 2876571

Quote # :

Sales Order # :

8449115

SUMMIT Version: 7.2.27

Sunday, September 11, 2011 12:05:00

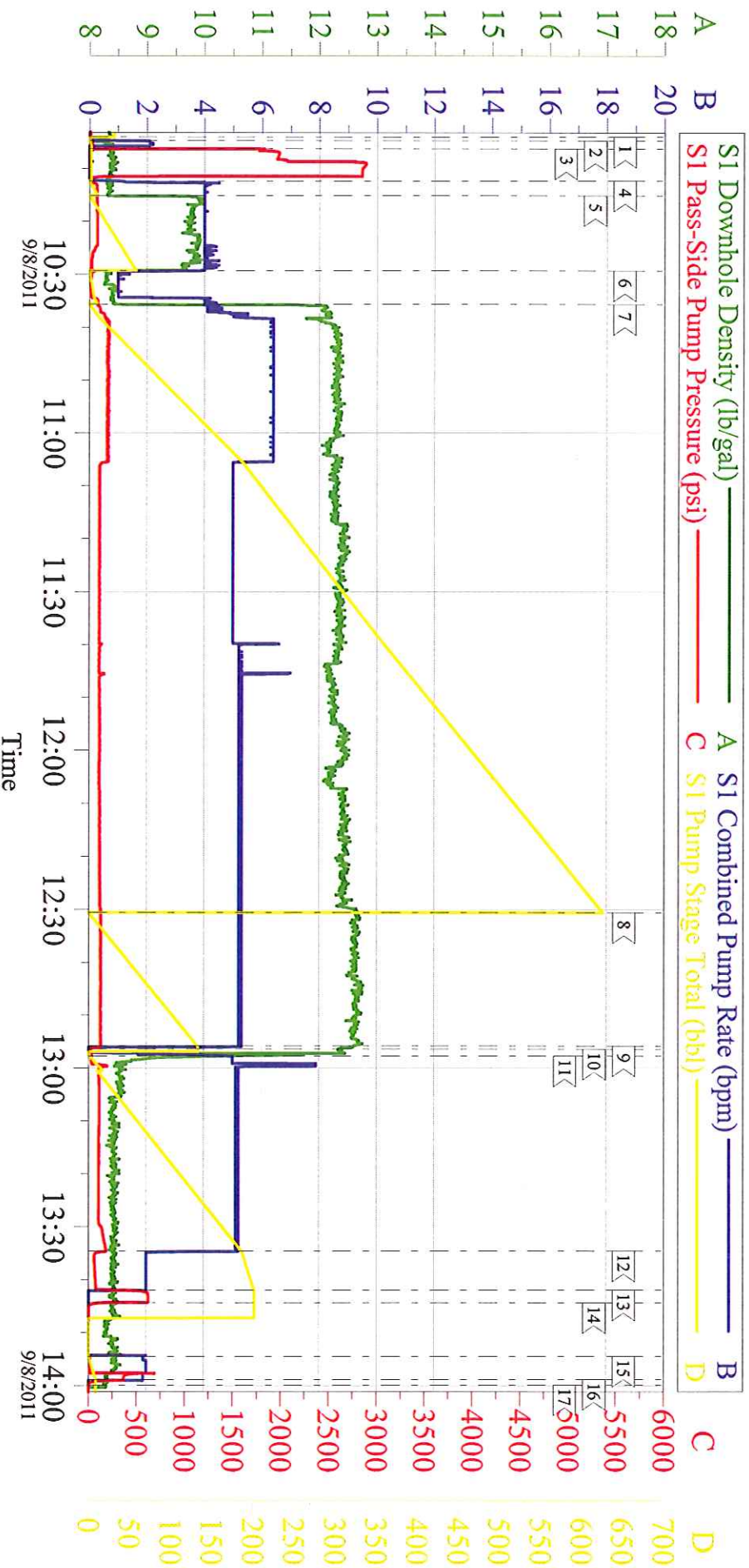
***Cementing Job Log***

Activity Description	Date/Time	Cht #	Rate bbl/ min	Volume bbl		Pressure psig		Comments
				Stage	Total	Tubing	Casing	
Comment	09/08/2011 15:31							THANK YOU FOR USING HALLIBURTON CEMENT DEPARTMENT. JEREMY YOUNG AND CREW.



# WILLIAMS

## TR 12-1-698, 9 5/8 SURFACE

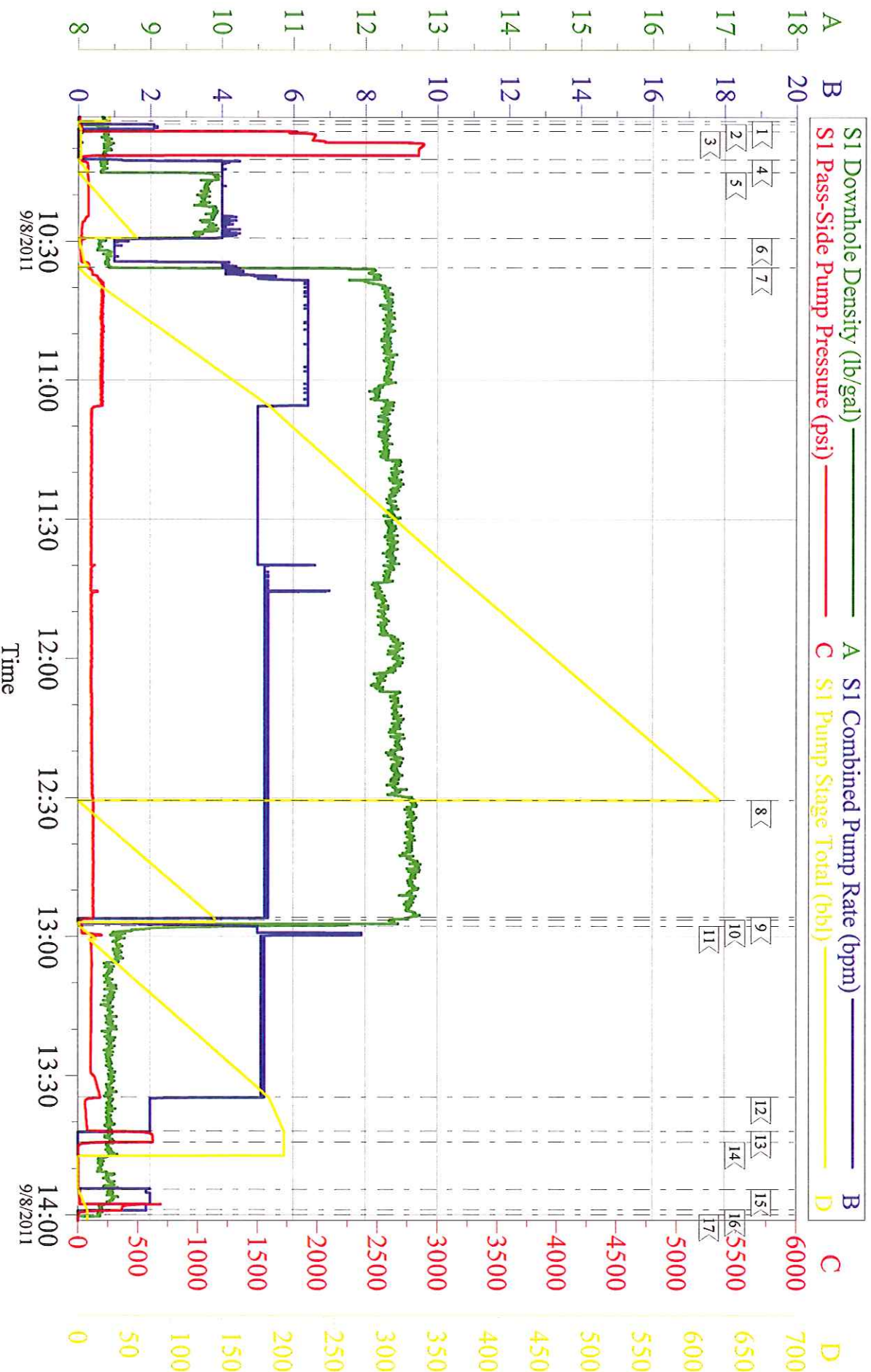


Customer: WILLIAMS	Job Date: 08-Sep-2011	Sales Order #: 8449115
Well Description: TR 12-1-698	Job Type: SURFACE	ADC Used: YES
Customer Rep: RICK OAKS	Service Supervisor: JEREMY YOUNG	Pump #/Operator: 5/CHRIS KUKUS

OptiCem v6.4.10  
08-Sep-11 14:19

# WILLIAMS

## TR 12-1-698, 9 5/8 SURFACE



Customer: WILLIAMS  
 Well Description: TR 12-1-698  
 Customer Rep: RICK OAKS

Job Date: 08-Sep-2011  
 Job Type: SURFACE  
 Service Supervisor: JEREMY YOUNG

Sales Order #: 8449115  
 ADC Used: YES  
 Pump #/Operator: 5/CHRIS KUKUS