

NOBLE ENERGY INC.
 VELVET 21-17
 NENW 17-10N-61W
 660' FNL & 1980' FWL
 Weld County, Colorado
 Wattenberg
CURRENT WELLBORE SCHEMATIC
 with PROPOSED P&A
 8/14/2012

API: 05-123-10381
 COGCC #

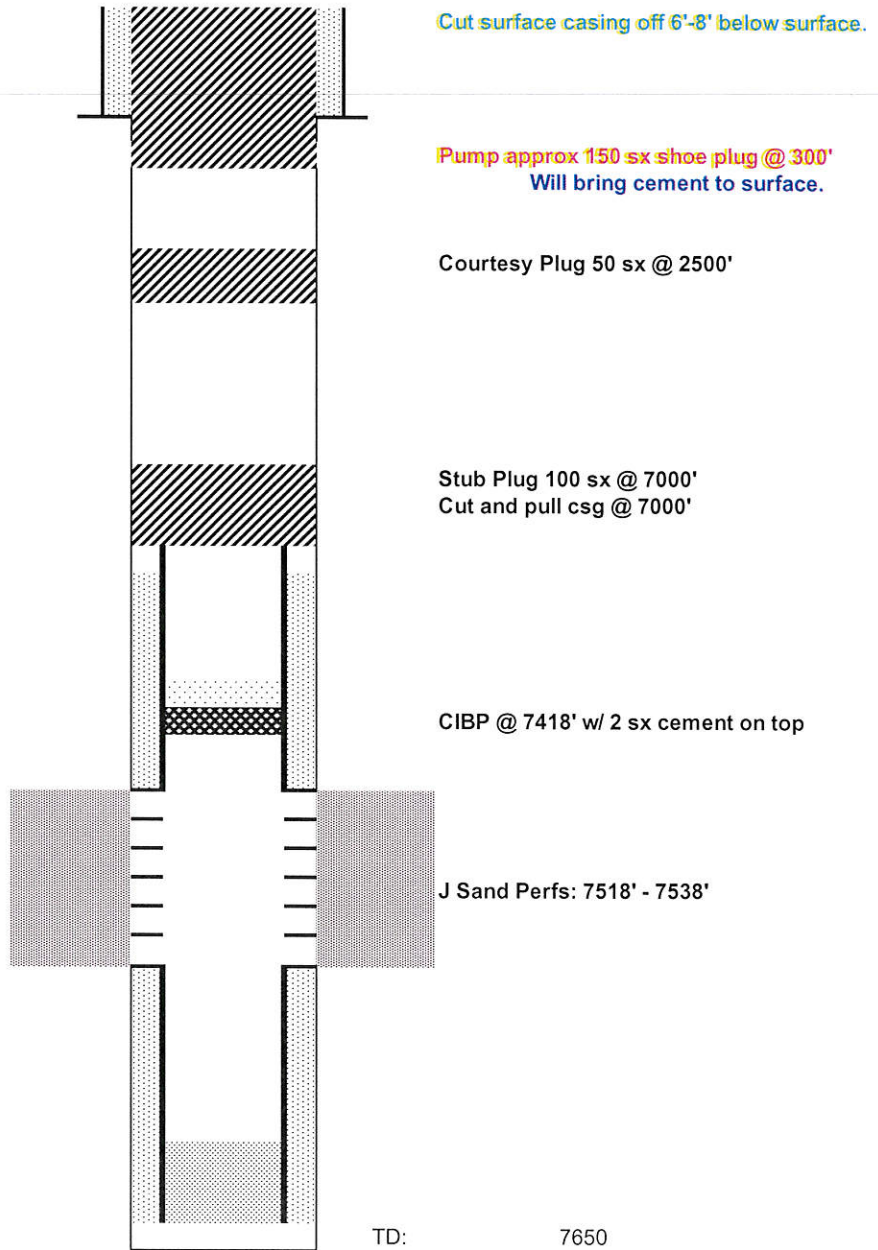
GL Elev: 5108
 KB Elev: 5116

Spud Date: 8/7/1981

Surface Casing :
 8 5/8" 24# @ 200'
 Cement: 150 sx
 TOC: surface

TOC @ 7500'

Production Casing :
 4 1/2" 11.60# @ 7634'
 Cement: 150 sx
 TD: 8/18/1981



Cut surface casing off 6'-8' below surface.

Pump approx 150 sx shoe plug @ 300'
 Will bring cement to surface.

Courtesy Plug 50 sx @ 2500'

Stub Plug 100 sx @ 7000'
 Cut and pull csg @ 7000'

CIBP @ 7418' w/ 2 sx cement on top

J Sand Perfs: 7518' - 7538'

TD: 7650