

HALLIBURTON

WILLIAMS PRODUCTION RMT INC - EBUS

TR 42-34-597
TRAIL RIDGE
Garfield County , Colorado

Cement Surface Casing
02-Jul-2011

Job Site Documents

The Road to Excellence Starts with Safety

Sold To #: 300721	Ship To #: 2863542	Quote #:	Sales Order #: 8293123
Customer: WILLIAMS PRODUCTION RMT INC - EBUS		Customer Rep: Geary, Scott	
Well Name: TR	Well #: 42-34-597	API/UWI #: 05-045-19223	
Field: TRAIL RIDGE	City (SAP): PARACHUTE	County/Parish: Garfield	State: Colorado
Legal Description: Section 27 Township 5S Range 97W			
Lat: N 39.578 deg. OR N 39 deg. 34 min. 40.382 secs.		Long: W 108.256 deg. OR W -109 deg. 44 min. 38.911 secs.	
Contractor: H&P Drilling	Rig/Platform Name/Num: H&P 278		
Job Purpose: Cement Surface Casing			
Well Type: Development Well	Job Type: Cement Surface Casing		
Sales Person: SCOTT, KYLE	Srvc Supervisor: KUKUS, CRAIG	MBU ID Emp #: 369124	

Job Personnel

HES Emp Name	Exp Hrs	Emp #	HES Emp Name	Exp Hrs	Emp #	HES Emp Name	Exp Hrs	Emp #
ANDERSON, ADAM S	13	456683	BURKE, BRENDAN Patrick	13	487782	KUKUS, CRAIG A	23	369124
SMITH, DUSTIN Michael	23	418015	WYCKOFF, RYAN Scott	23	476117	BLANCHETTE, JAMES	6	371360

Equipment

HES Unit #	Distance-1 way	HES Unit #	Distance-1 way	HES Unit #	Distance-1 way	HES Unit #	Distance-1 way
10616651C	90 mile	10886087	90 mile	10951248	90 mile	10995025	90 mile
11259886	90 mile	11710582	90 mile	HBL-2000-3	90 mile		

Job Hours

Date	On Location Hours	Operating Hours	Date	On Location Hours	Operating Hours	Date	On Location Hours	Operating Hours
7-2-2011	4	2	7-3-2011	17	5			
TOTAL			Total is the sum of each column separately					

Job

Job Times

Formation Name	Job			Date	Time	Time Zone
Formation Depth (MD)	Top	Bottom		Called Out		
Form Type	BHST		110 degF	On Location	02 - Jul - 2011	20:30
Job depth MD	3030. ft		Job Depth TVD	Job Started	02 - Jul - 2011	22:39
Water Depth			Wk Ht Above Floor	Job Completed	02 - Jul - 2011	16:49
Perforation Depth (MD)	From	To		Departed Loc	02 - Jul - 2011	17:49

Well Data

Description	New / Used	Max pressure psig	Size in	ID in	Weight lbm/ft	Thread	Grade	Top MD ft	Bottom MD ft	Top TVD ft	Bottom TVD ft
Surface Open Hole				14.75				.	2940.		
Surface Casing	Unknown		9.625	9.001	32.3		J-55	.	2940.		

Sales/Rental/3rd Party (HES)

Description	Qty	Qty uom	Depth	Supplier
PLUG,CMTG, TOP,9 5/8,HWE,8.16 MIN/9.06 MA	1	EA		

Tools and Accessories

Type	Size	Qty	Make	Depth	Type	Size	Qty	Make	Depth	Type	Size	Qty	Make
Guide Shoe					Packer					Top Plug	9.625	1	HES
Float Shoe					Bridge Plug					Bottom Plug			
Float Collar					Retainer					SSR plug set			
Insert Float										Plug Container	9.625	1	HES
Stage Tool										Centralizers			

Miscellaneous Materials

Gelling Agt	Conc	Surfactant	Conc	Acid Type	Qty	Conc %
Treatment Fld	Conc	Inhibitor	Conc	Sand Type	Size	Qty

Fluid Data

Stage/Plug #: 1										
Fluid #	Stage Type	Fluid Name	Qty	Qty uom	Mixing Density lbm/gal	Yield ft ³ /sk	Mix Fluid Gal/sk	Rate bbl/min	Total Mix Fluid Gal/sk	
1	Fresh Water		10.00	bbl	8.33	.0	.0	5		
2	Super Flush-XLC	SUPERFLUSH-XLC - SBM (549694)	50.00	bbl	11.	.0	.0	5		
3	Fresh Water		10.00	bbl	8.33	.0	.0	5		
4	ExtendaCem 303 + LCM	EXTENDACEM (TM) SYSTEM (452981)	1155.0	sacks	12.3	2.23	12.21	6	12.21	
		12.21 Gal	FRESH WATER							
5	ExtendaCem 303 Tail	EXTENDACEM (TM) SYSTEM (452981)	250.0	sacks	12.6	2.07	11.04	6	11.04	
		11.04 Gal	FRESH WATER							
6	Displacement		230.00	bbl	8.33	.0		8		
7	Topout Cement	HALCEM (TM) SYSTEM (452986)	490.0	sacks	15.8	1.15	5.0	2	5.0	
		5 Gal	FRESH WATER							
Calculated Values			Pressures			Volumes				
Displacement	234	Shut In: Instant		Lost Returns		Cement Slurry	649.8	Pad		
Top Of Cement	SURFACE	5 Min		Cement Returns	7	Actual Displacement	234	Treatment		
Frac Gradient		15 Min		Spacers	73	Load and Breakdown		Total Job	963.8	
Rates										
Circulating	RIG	Mixing	5	Displacement	8	Avg. Job	6.5			
Cement Left In Pipe	Amount	43.53 ft	Reason	Shoe Joint						
Frac Ring # 1 @	ID	Frac ring # 2 @	ID	Frac Ring # 3 @	ID	Frac Ring # 4 @	ID			
The Information Stated Herein Is Correct				Customer Representative Signature						

The Road to Excellence Starts with Safety

Sold To #: 300721	Ship To #: 2863542	Quote #:	Sales Order #: 8293123
Customer: WILLIAMS PRODUCTION RMT INC - EBUS		Customer Rep: Geary, Scott	
Well Name: TR	Well #: 42-34-597	API/UWI #: 05-045-19223	
Field: TRAIL RIDGE	City (SAP): PARACHUTE	County/Parish: Garfield	State: Colorado
Legal Description: Section 27 Township 5S Range 97W			
Lat: N 39.578 deg. OR N 39 deg. 34 min. 40.382 secs.		Long: W 108.256 deg. OR W -109 deg. 44 min. 38.911 secs.	
Contractor: H&P Drilling		Rig/Platform Name/Num: H&P 278	
Job Purpose: Cement Surface Casing			Ticket Amount:
Well Type: Development Well		Job Type: Cement Surface Casing	
Sales Person: SCOTT, KYLE		Srvc Supervisor: KUKUS, CRAIG	MBU ID Emp #: 369124

Activity Description	Date/Time	Cht #	Rate bbl/min	Volume bbl		Pressure psig		Comments
				Stage	Total	Tubing	Casing	
Call Out	07/02/2011 13:30							
Depart Yard Safety Meeting	07/02/2011 16:00							SAFETY MEETING INVOLVING THE ENTIRE CMT CREW
Circulate Well	07/02/2011 18:00							RIG CIRCULATED WELL 150 BBLS
Arrive At Loc	07/02/2011 20:30							RIG ON BOTTOM
Assessment Of Location Safety Meeting	07/02/2011 20:40							ASSESSMENT OF LOCATION INVOLVING THE ENTIRE CMT CREW
Pre-Rig Up Safety Meeting	07/02/2011 20:50							SAFETY MEETING INVOLVING THE ENTIRE CMT CREW
Rig-Up Equipment	07/02/2011 21:00							RIG UP TO STAND PIPE / WATER TO UP RIGHT AND DAY TANK
Pre-Job Safety Meeting	07/02/2011 22:15							SAFETY MEETING INVOLVING EVERYONE ON LOCATION
Start Job	07/02/2011 22:39							TD 3030 FT TP 3016.69 FT SJ 43.53 FT OH 14 3/4 IN PIPE 9 5/8IN J-55 1000FT AT TOP 40# 2000 FT 36# MUD WT 9.0#
Other	07/02/2011 22:39		2	2			40.0	FILL LINES WITH FRESH WATER
Pressure Test	07/02/2011 22:41		0.5			3500.0		PRESSURE TEST GOOD
Pump Spacer 1	07/02/2011 22:44		5	10			129.0	FRESH WATER SPACER

Activity Description	Date/Time	Cht #	Rate bbl/min	Volume bbl		Pressure psig		Comments
				Stage	Total	Tubing	Casing	
Pump Spacer 1	07/02/2011 22:46		5	50			149.0	PUMP SUPER FLUSH AT 11 PPG
Pump Spacer 1	07/02/2011 22:56		5	10			52.0	PUMP FRESH WATER SPACER
Pump Lead Cement	07/02/2011 23:03		7	458			210.0	PUMP 1155 SKS LEAD CEMENT AT 12.3 PPG 2.23 Y 12.21 GAL/SK / AT 380 BBLS OF LEAD GONE HAD PROBLEMS GETTING WATER ON BOARD / SLOW RATE AND WELL WAS ON A SUCK PULLING CEMENT PAST DOWN HOLE DENSOMOTOR QUICKLEY
Pump Tail Cement	07/03/2011 00:51		7	92.1			222.0	PUMP TAIL CEMENT AT 12.6 PPG 2.07 Y 11.04 GAL/SK
Shutdown	07/03/2011 01:08							
Drop Top Plug	07/03/2011 01:08							PLUG LEFT THE PLUG CONTAINER
Pump Displacement	07/03/2011 01:09		8	229.9			784.0	PUMP FRESH WATER DISPLACEMENT
Slow Rate	07/03/2011 01:37		2	209			465.0	SLOW RATE TO 2 BBL MIN LAST 20 BBLS
Bump Plug	07/03/2011 01:41		2	229.9			1061.0	PLUG LANDED AT 531 PSI
Check Floats	07/03/2011 01:44							FLOATS HELD / GOT 1 BBL BACK TO TANKS
Other	07/03/2011 01:49		2	10			514.0	PUMP 10 BBLS SUGAR WATER THRU PARASITE / LINERAN CLEAN
Shutdown	07/03/2011 01:54							SHUT DOWN/CLEAN UP
End Job	07/03/2011 01:57							CALLED IN FOR 40BBL ORDER OF SUPERFLUSH FOR TOP OUT
Pre-Rig Down Safety Meeting	07/03/2011 02:00							SAFETY MEETING INVOLVING THE ENTIRE CMT CREW
Rig-Down Equipment	07/03/2011 02:10							RIG FLOOR DOWN AND BLUKEQUIPMENT AND RIG UP FOR TOP OUT

Activity Description	Date/Time	Cht #	Rate bbl/min	Volume bbl		Pressure psig		Comments
				Stage	Total	Tubing	Casing	
Start Job	07/03/2011 08:38							TOP OUT JOB #1
Pump Spacer 1	07/03/2011 08:39		2	2			37.0	PUMP H2O SPACER AHEAD
Pump Cement - Start	07/03/2011 08:40		2	71.6			94.0	PUMP 350 SKS TOP OUT CEMENT AT 15.8 PPG 1.15 Y 5.0 GAL/SK
Pump Displacement	07/03/2011 09:06		2	3			40.0	PUMP H2O DISPLACEMENT
Shutdown	07/03/2011 09:08							SHUT DOWN / SWAP LINE TOPIT WASH UP /PULL TOP OUT LINE / NO CEMENT TO SURFACE / PER CO - MAN TED ORDERED SAME TYPE SUPERFLUSH FOR NEXT TOP OUT/ 11:15 SUPER FLUSH ARRIVED
Start Job	07/03/2011 13:10							PER CO-MAN PUMP MAX 50BBLS FRESH WATER
Pump Spacer 1	07/03/2011 13:10		3	50			60.0	PUMP FRESH WATER
Shutdown	07/03/2011 13:27							BOOSTED FROM TRANSPORT 6 BBLS SUPER FLUSH INTO ANULUS / TRANSPORT WITH SUPER FLUSH ONLOCATION FROM 11:15 TO 16:15
Pump Spacer 1	07/03/2011 13:29		3	52			60.0	PUMPED TOTAL 52 BBLS FRESH WATER AND BROUGHT TO SURFACE
Shutdown	07/03/2011 13:30							
Start Job	07/03/2011 16:35							WAITED FOR SUC TRUCK TO ARRIVE BEFORE PUMPING TOP OUT ARRIVED AT 16:31
Pump Spacer 1	07/03/2011 16:35		2	0.5			60	PUMP SPACER AHEAD
Activity Description	Date/Time	Cht	Rate bbl/min	Volume bbl		Pressure psig		Comments

HALLIBURTON

Cementing Job Log

		#		Stage	Total	Tubing	Casing	
Pump Cement - Start	07/03/2011 16:36		2	28.7			94.0	PUMP 140 SKS CEMENT AT 15.8 PPG 1.15 Y 5.0 GAL/SK
Pump Displacement	07/03/2011 16:48		2	1.5			94.0	PUMP FRESH WATER DISPLACEMENT
Shutdown	07/03/2011 16:49							SHUT DOWN SWAP TO PIT AND WASH UP / TOTAL 7 BBLS CEMENT TO SURFACE
Safety Meeting - Departing Location	07/03/2011 17:40							SAFETY MEETING INVOLVING THE ENTIRE CMT CREW
Comment	07/03/2011 17:49							THANK YOU FOR USING HALLIBURTON, CRAIG KUKUS AND CREW

Sold To # : 300721

Ship To # :2863542

Quote # :

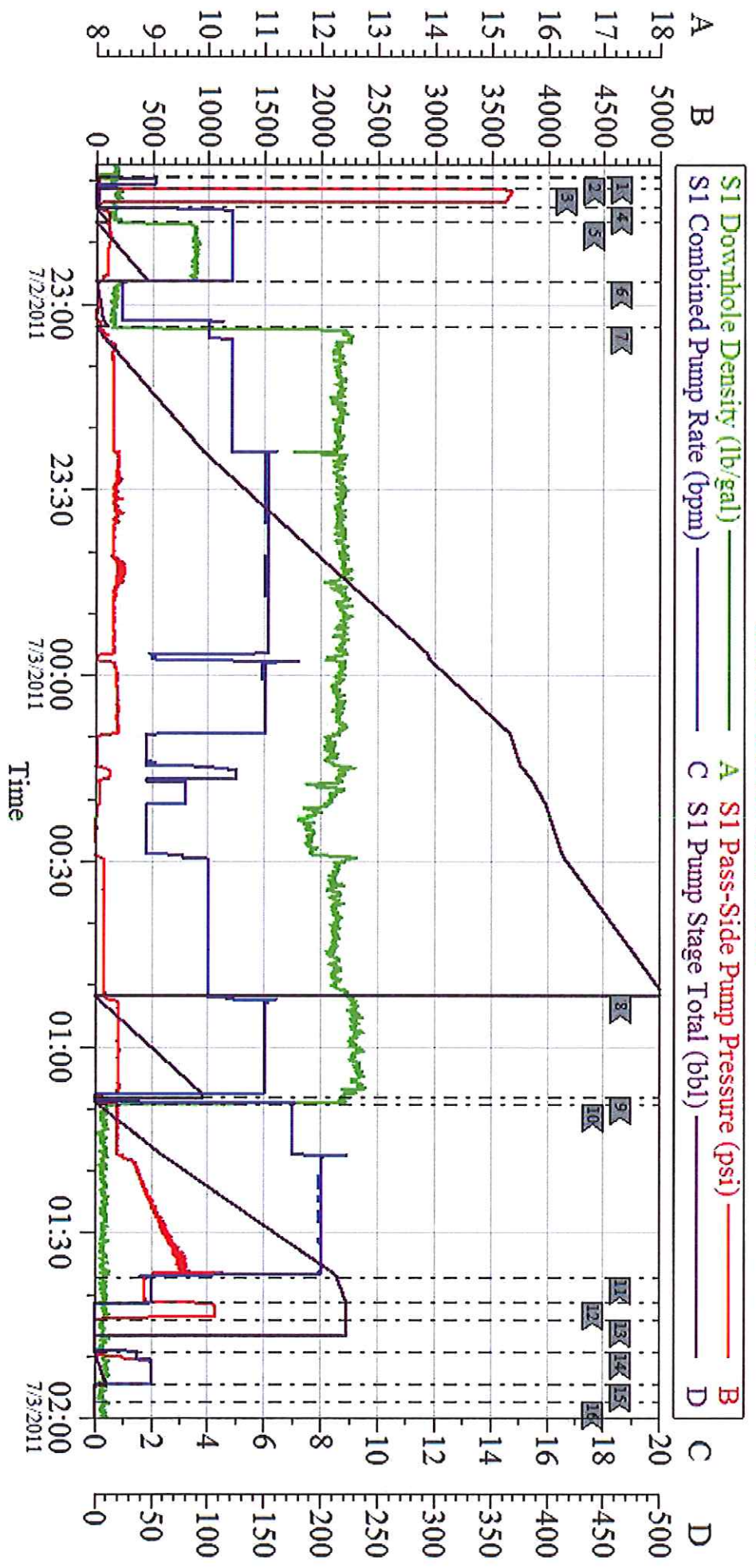
Sales Order # :

8293123

SUMMIT Version: 7.20.130

Friday, July 08, 2011 02:26:00

WILLIAMS SURFACE HP 278

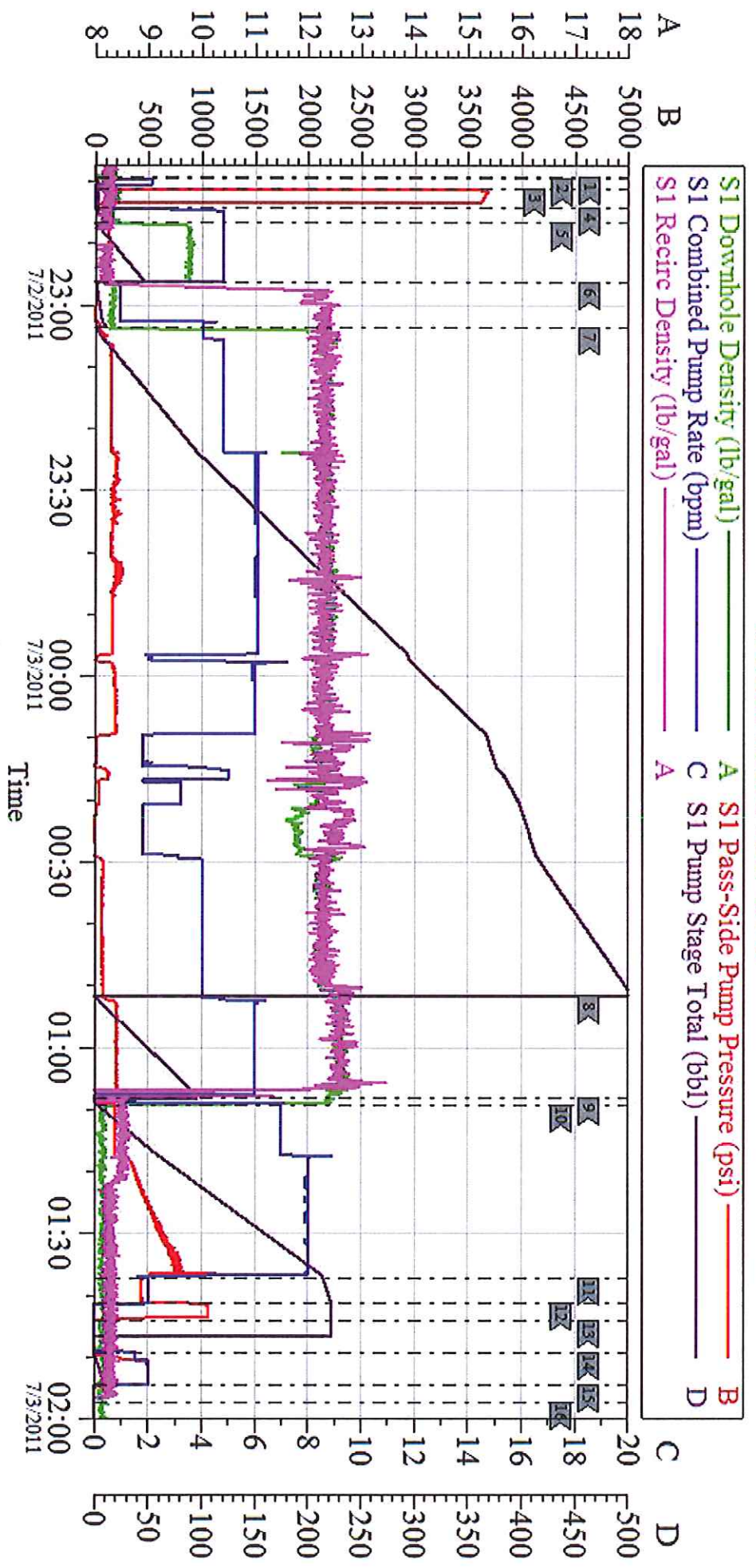


Local Event Log

1	START JOB	7/2/2011 22:39:16	2	PRIME LINES	7/2/2011 22:39:28	3	PRESSURE TEST	7/2/2011 22:41:07
4	PUMP HD0 SPACER	7/2/2011 22:44:15	5	PUMP SUPERFLUSH	7/2/2011 22:46:41	6	PUMP HD0 SPACER	7/2/2011 22:56:13
7	PUMP LEAD CEMENT	7/2/2011 23:03:59	8	PUMP TAIL CEMENT	7/3/2011 00:51:41	9	SHUT DOWN/DROP PLUG	7/3/2011 01:08:04
10	PUMP HD0 DISPLACEMENT	7/3/2011 01:09:15	11	SLOW RATE	7/3/2011 01:37:10	12	BUMP PLUG	7/3/2011 01:41:19
13	CHECK FLOATS	7/3/2011 01:44:06	14	PUMP SUGAR WATER	7/3/2011 01:49:15	15	SHUT DOWN	7/3/2011 01:54:35
16	END JOB	7/3/2011 01:57:22						

Customer:	WILLIAMS	Job Date:	02-Jul-2011	Sales Order #:	8293123
Well Description:	TR 42-34-597	Job Type:	SURFACE	ADC Used:	YES
Company Rep:	SCOTT GEARY	Cement Supervisor:	CRAIG KUKUTS	Effie #/Operator:	RYAN WYCKOFF

WILLIAMS SURFACE HP 278

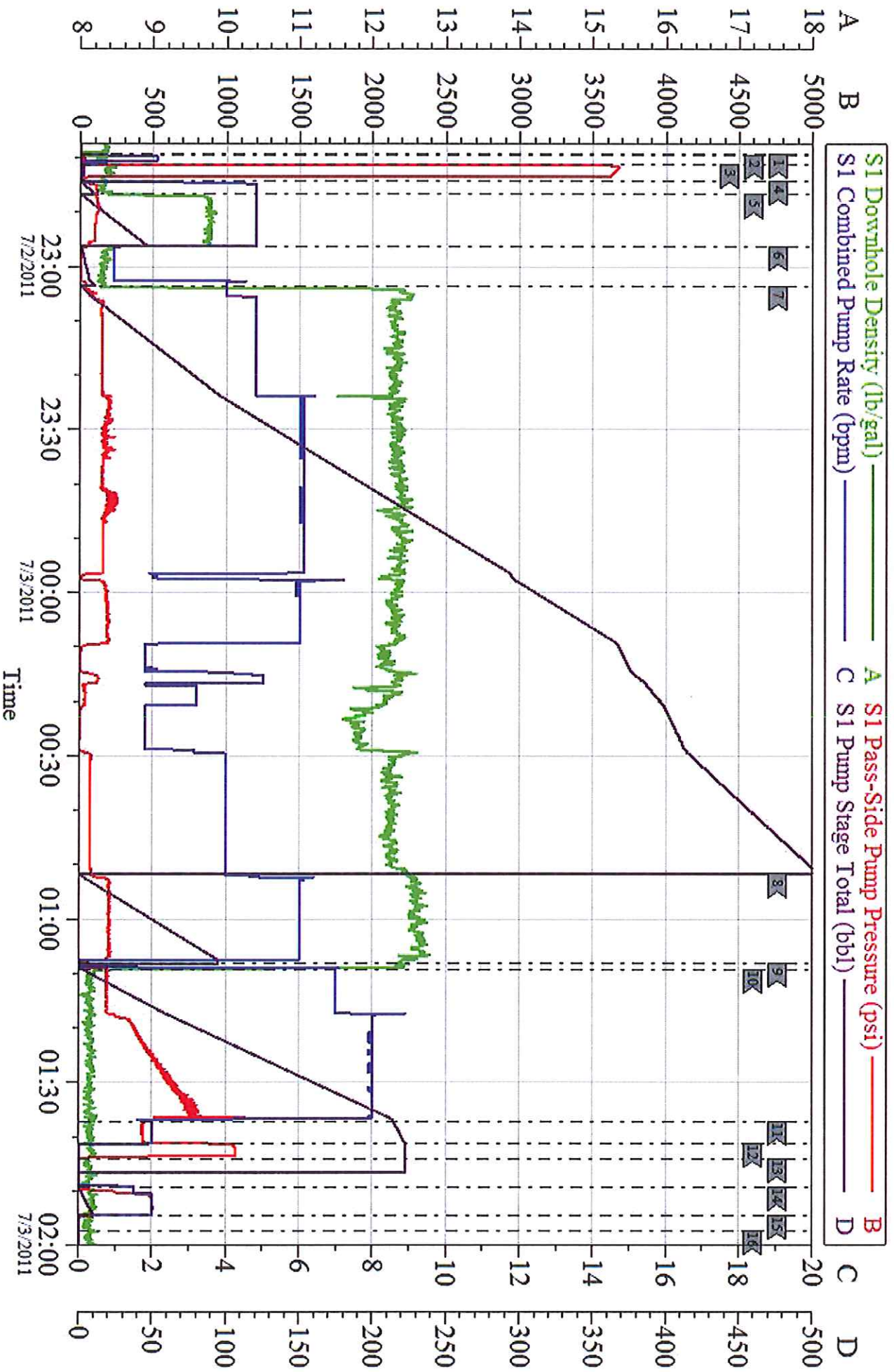


Local Event Log

1	START JOB	7/2/2011 22:39:16	2	PRIME LINES	7/2/2011 22:39:28	3	PRESSURE TEST	7/2/2011 22:41:07
4	PUMP HD0 SPACER	7/2/2011 22:44:15	5	PUMP SUPERFLUSH	7/2/2011 22:46:41	6	PUMP HD0 SPACER	7/2/2011 22:56:13
7	PUMP LEAD CEMENT	7/2/2011 23:03:39	8	PUMP TAIL CEMENT	7/3/2011 00:51:41	9	SHUT DOWN/DROP PLUG	7/3/2011 01:08:04
10	PUMP HD0 DISPLACEMENT	7/3/2011 01:09:15	11	SLOW RATE	7/3/2011 01:37:10	12	BACKPLUG	7/3/2011 01:41:19
13	CHECK FLOATS	7/3/2011 01:44:06	14	PUMP SUGAR WATER	7/3/2011 01:49:15	15	SHUT DOWN	7/3/2011 01:54:35
16	END JOB	7/3/2011 01:57:22						

Customer:	WILLIAMS	Job Date:	02-Jul-2011	Sales Order #:	8293123
Well Description:	TR 42-34-597	Job Type:	SURFACE	ADC Used:	YES
Company Rep:	SCOTT GEARY	Cement Supervisor:	CRAIG KUKUTS	Elite #/Operator:	RYAN WYCKOFF

WILLIAMS SURFACE HP 278



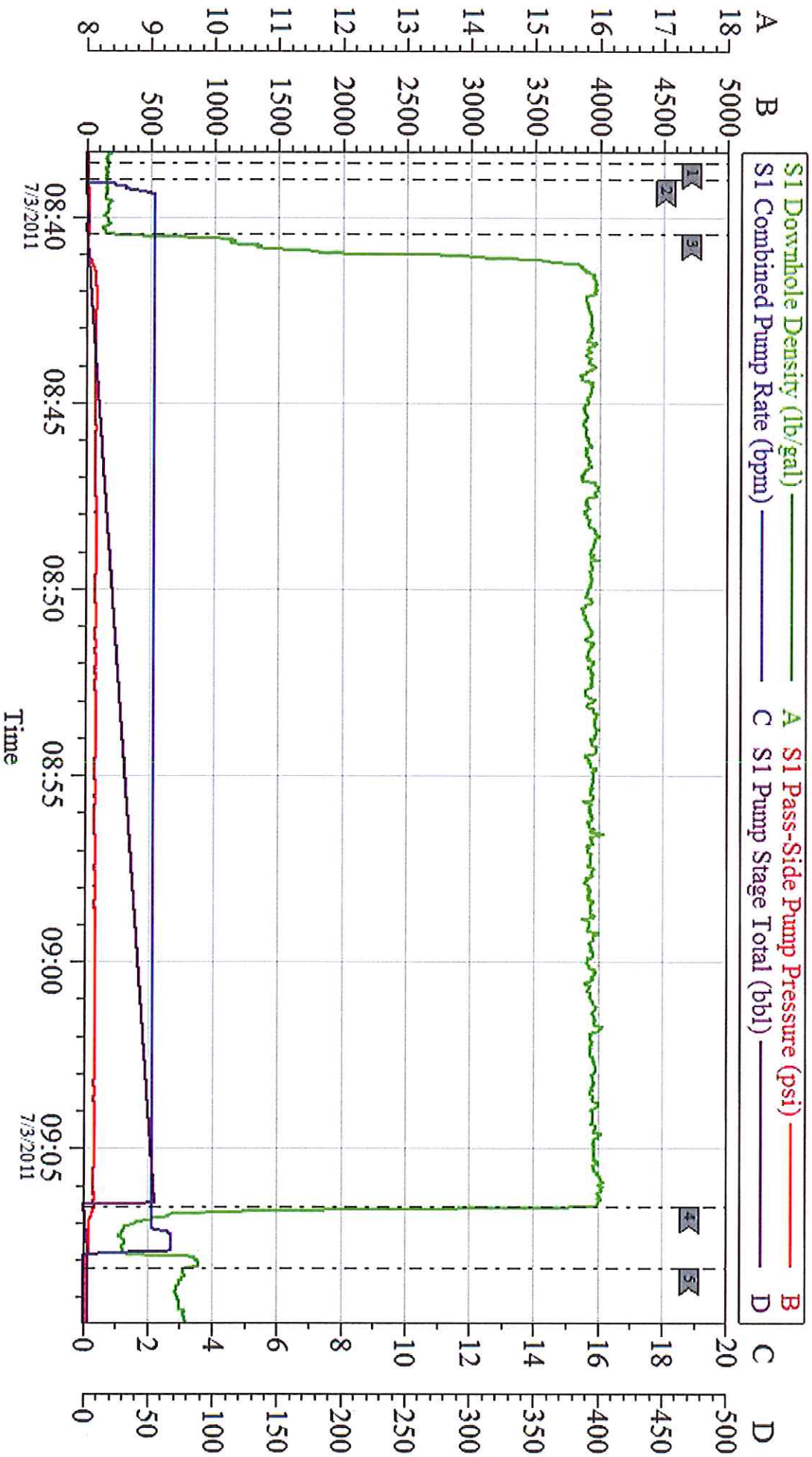
Customer: **WILLIAMS**
 Well Description: **TR 42-34-597**
 Company Rep: **SCOTT GEARY**

Job Date: **02-Jul-2011**
 Job Type: **SURFACE**
 Cement Supervisor: **CRAIG KUKUTS**

Sales Order #: **8293123**
 ADC Used: **YES**
 Elite #/Operator: **RYAN WYCKOFF**

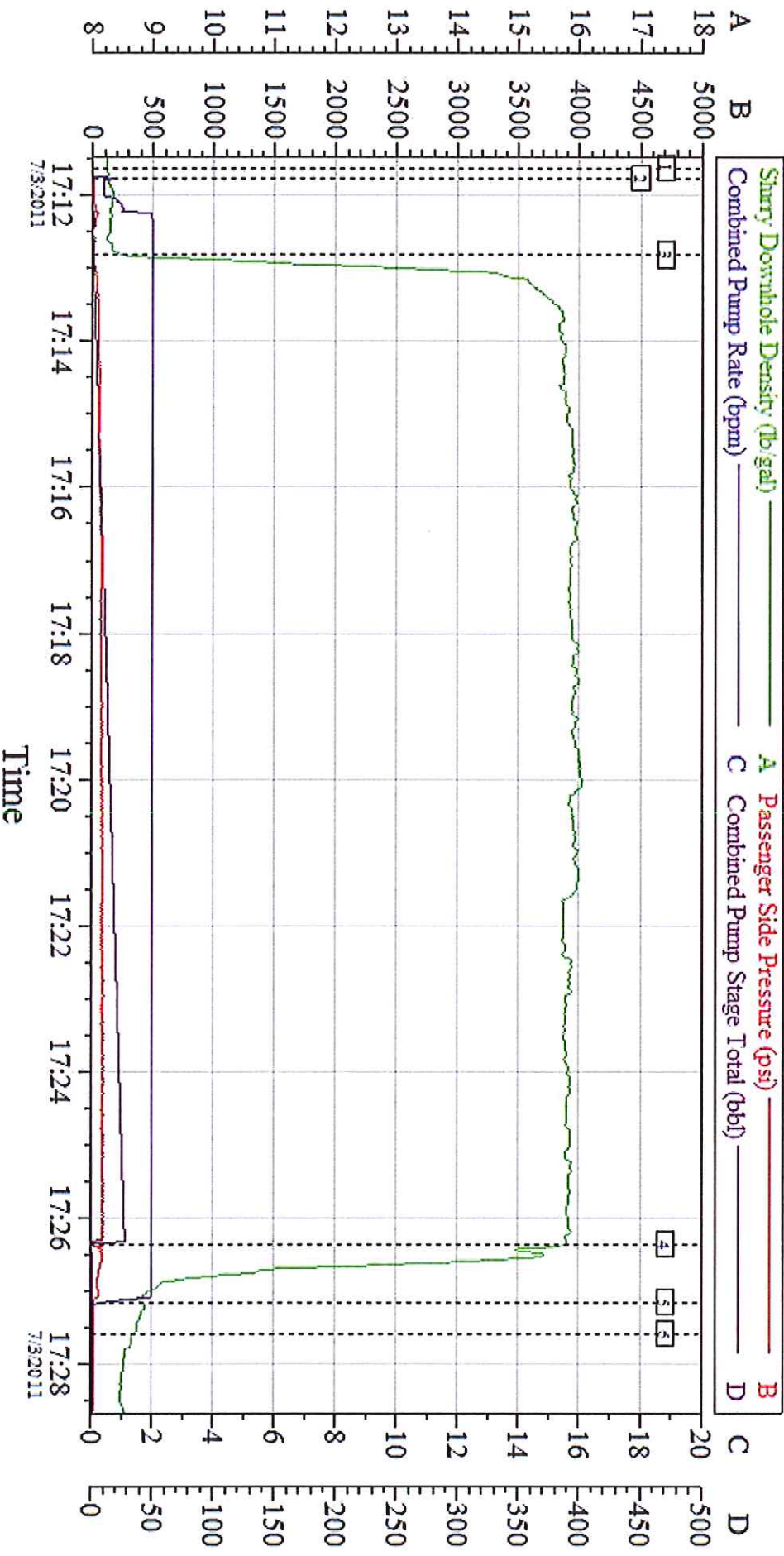
OptiCem v6.4.8
 03-Jul-11 02:45

WILLIAMS TOP OUT#1



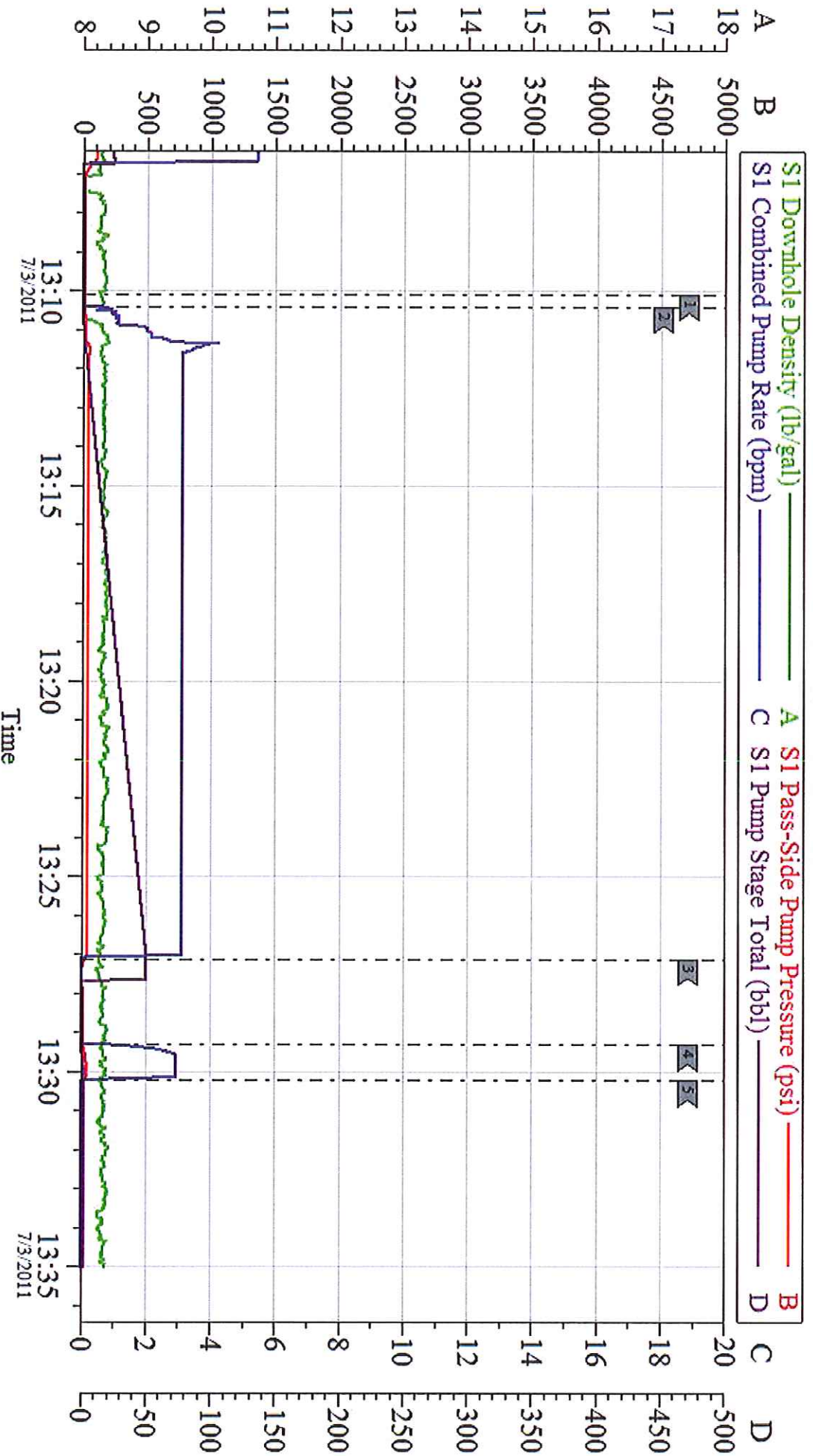
Customer:	WILLIAMS	Job Date:	03-Jul-2011	Sales Order #:	8293123
Well Description:	TR 42-34-597	Job Type:	TOP OUT	ADC Used:	YES
Company Rep:	SCOTT GEARY	Cement Supervisor:	CRAIG KUKUS	Elite #/Operator:	ELITE 4 RYAN WYCKOFF

WILLIAMS TOP OUT #2



Customer: WILLIAMS Well Desc: TR 42-34-397 COMPANY: SCOTT GEARY	Job Date: 07/03/11 JOB TYPE: TOP OUT CEMENT SUPERVISER: CRAIG KUKIUS	Ticket #: 8293123 ADC USED: YES ELITE # OPERATOR: ELITE 4 RYAN WYCKOFF
--	---	---

WILLIAMS WATER SPACER



Customer: **WILLIAMS**
 Well Description: **TR 42-34-597**
 Company Rep: **SCOTT GEARY**

Job Date: **03-Jul-2011**
 Job Type: **WATER SPACER**
 Cement Supervisor: **CRAIG KUKUS**

Sales Order #: **8293123**
 ADC Used: **YES**
 Elite #/Operator: **ELITE 4 RYAN WYCKOFF**