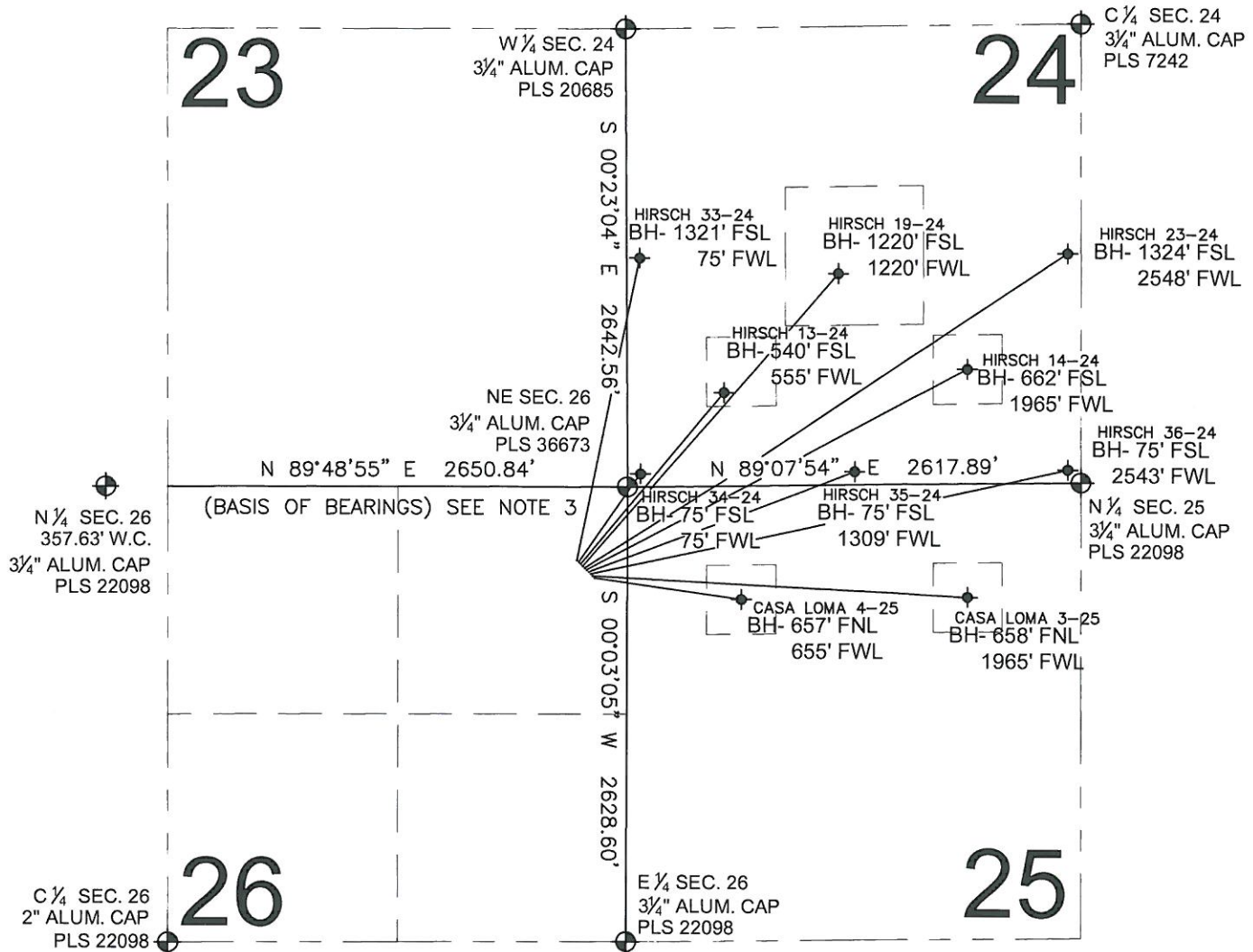


PAD DRAWING: HIRSCH/CASA LOMA 10 PAD

SECTION 26, TOWNSHIP 7 NORTH, RANGE 67 WEST, 6TH P.M.



LEGEND

- = EXISTING MONUMENT
- ◆ = BOTTOM HOLE
- BH= BOTTOM HOLE
- = PROPOSED WELL
- ◆ = EXISTING WELL

NOTES:

- THIS FIELD SURVEY CONFORMS TO THE MINIMUM STANDARDS SET BY THE C.O.G.C.C., RULE NO. 215
- HORIZONTAL POSITIONS AND ORTHOMETRIC ELEVATIONS SHOWN AT THE WELL HEAD, ARE BASED ON GPS-RTK POSITIONS DERIVED FROM MINIMUM 2-HOUR STATIC OBSERVATIONS CORRECTED BY THE NATIONAL GEODETIC SURVEY ONLINE POSITIONING USER SERVICE, O.P.U.S. DATUM: HORIZONTAL = NAD83/2007, VERTICAL = NAVD88
- THE BASIS OF BEARINGS ARE STATE PLANE COORDINATE SYSTEM GRID BEARINGS SHOWN HEREON BETWEEN THE DESCRIBED THE MONUMENTS SHOWN HEREON.
- GRID DISTANCES ARE SHOWN, AS MEASURED IN THE FIELD, WITH TIES TO WELLS MEASURED PERPENDICULAR TO SECTION LINES.

NOTES:

CASA LOMA 4-25 TO BE AT 527' FNL, 186' FEL.
 BOTTOM HOLE AT 657' FNL & 655' FNL.
 CASA LOMA 3-25 TO BE AT 516' FNL, 198' FEL.
 BOTTOM HOLE AT 658' FNL & 1965' FNL.
 HIRSCH 36-24 TO BE AT 505' FNL, 209' FEL.
 BOTTOM HOLE AT 75' FNL & 2543' FNL.
 HIRSCH 35-24 TO BE AT 493' FNL, 220' FEL.
 BOTTOM HOLE AT 75' FNL & 1309' FNL.
 HIRSCH 14-24 TO BE AT 482' FNL, 232' FEL.
 BOTTOM HOLE AT 662' FNL & 1965' FNL.
 HIRSCH 23-24 TO BE AT 471' FNL, 243' FEL.
 BOTTOM HOLE AT 1324' FNL & 2548' FNL.
 HIRSCH 19-24 TO BE AT 459' FNL, 254' FEL.
 BOTTOM HOLE AT 1220' FNL & 1220' FNL.
 HIRSCH 13-24 TO BE AT 448' FNL, 266' FEL.
 BOTTOM HOLE AT 540' FNL & 555' FNL.
 HIRSCH 34-24 TO BE AT 437' FNL, 277' FEL.
 BOTTOM HOLE AT 75' FNL & 75' FNL.
 HIRSCH 33-24 TO BE AT 425' FNL, 288' FEL.
 BOTTOM HOLE AT 1321' FNL & 75' FNL.

PREPARED BY:

PFS

Petroleum Field Services, LLC
 1801 W. 13th Ave.
 Denver, CO 80204



BAYSWATER EXPLORATION & PRODUCTION, LLC

FIELD DATE:
05-21-12

DRAWING DATE:
06-21-12

BY: SMF
 CHECK: KAG

PAD NAME:
HIRSCH/CASA LOMA 10 PAD

SURFACE LOCATION:

WELD COUNTY, COLORADO
 NE 1/4 NE 1/4, SEC. 26, T7N, R67W, 6TH P.M.

