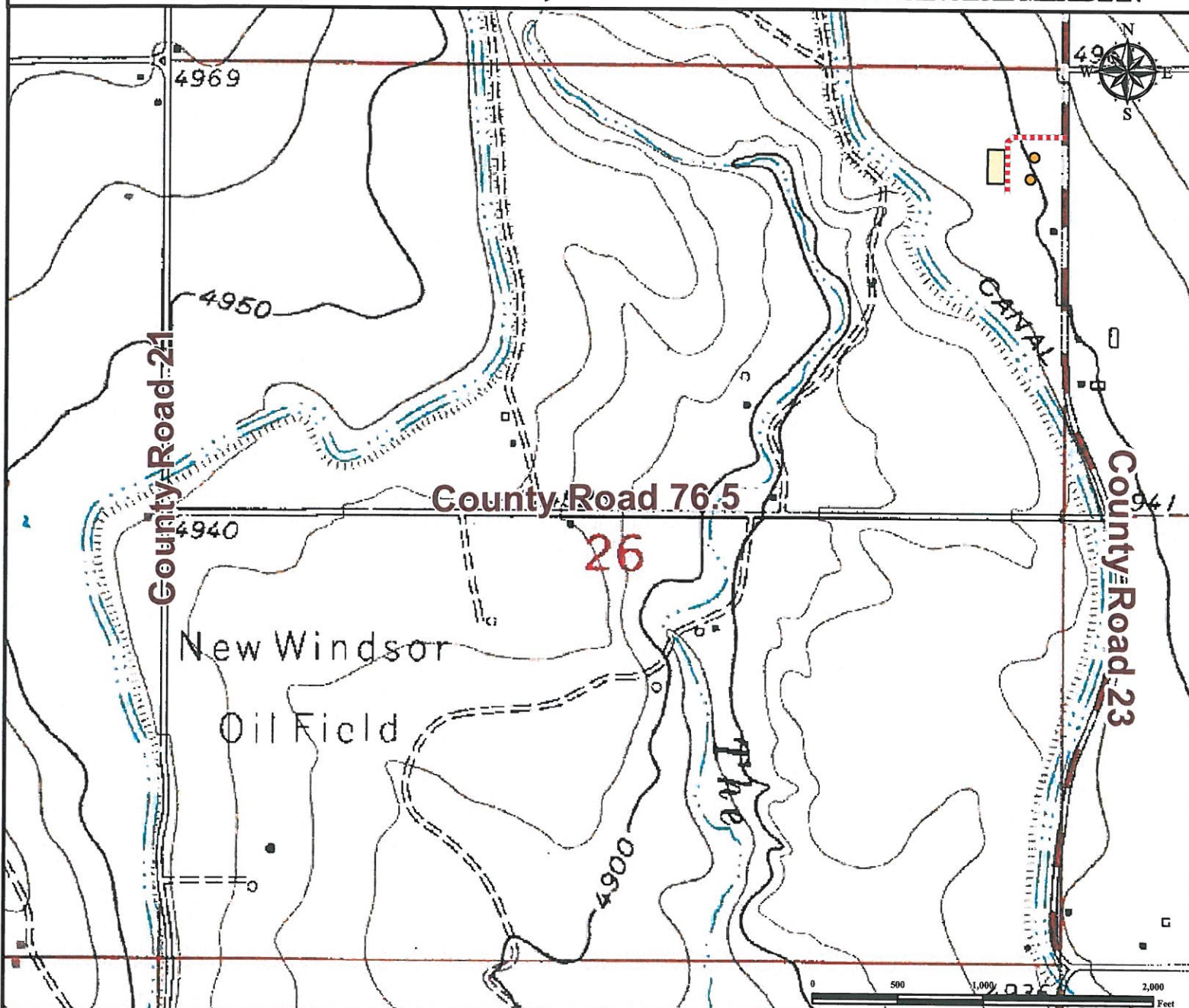


# Access Road Map

## CASA LOMA 4-25

NE¼ NE¼ SECTION 26, TOWNSHIP 7 NORTH, RANGE 67 WEST OF THE 6TH PRINCIPAL MERIDIAN



**From Severence, CO:** From the intersection of 4th Ave and County Road 23,  
Drive North on County Road 23 for ±1.9 miles.  
Turn Left on proposed access road and drive west ±0.06 mile.  
Turn Left on proposed access road and follow for ±0.06 mile to proposed well location.

Total distance from Severence, CO to proposed well pad location is ±2.02 miles.

### Legend

● Proposed Well Pad    
 ---- Proposed Access Road    
  Proposed Facility

### Reference Location

**\*\* All Measurements are Made from  
 Reference Well CASA LOMA 4-25 \*\***

**Lat: 40.550919° Long: -104.851560° (NAD83)  
 Elevation: 4954 Feet**



*Use our resources to find yours!*  
**[www.petro-fs.com](http://www.petro-fs.com)**  
**(303) 928-7128**

Field Date: 05/21/2012  
 Drafting Date: 07/10/2012  
 Drafter: DLR  
 Checked By: BHF

Data Sources:  
 Topo courtesy of USGS

Prepared for:

