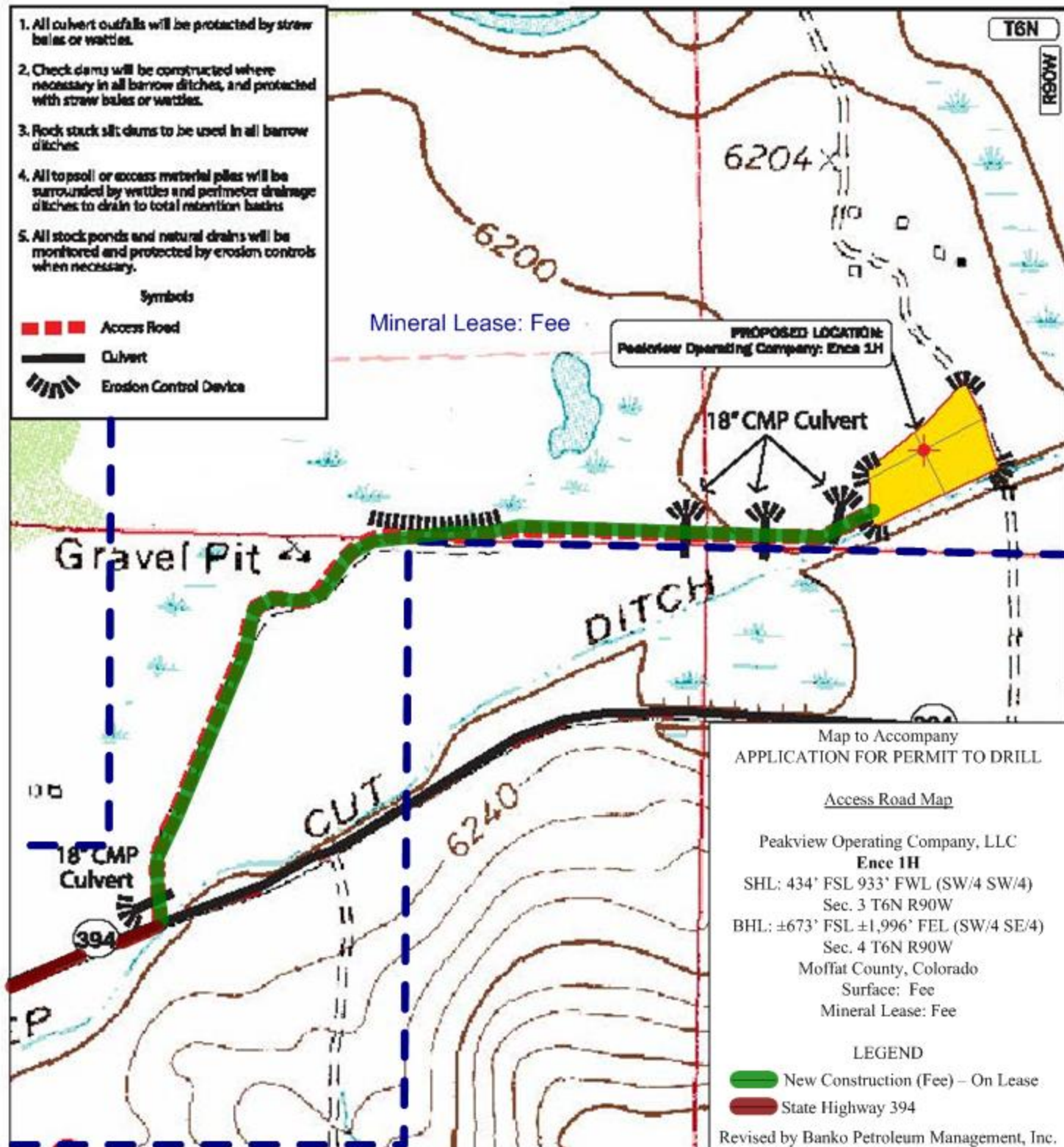


1. All culvert outfalls will be protected by straw bales or wattles.
2. Check dams will be constructed where necessary in all borrow ditches, and protected with straw bales or wattles.
3. Rock stuck silt dums to be used in all borrow ditches.
4. All topsoil or excess material piles will be surrounded by wattles and perimeter drainage ditches to drain to total retention basins.
5. All stockponds and natural drains will be monitored and protected by erosion controls when necessary.

#### Symbols

- Access Road
- Culvert
- Erosion Control Device



#### ACCESS ROAD EROSION CONTROL



0 600 1000 FT

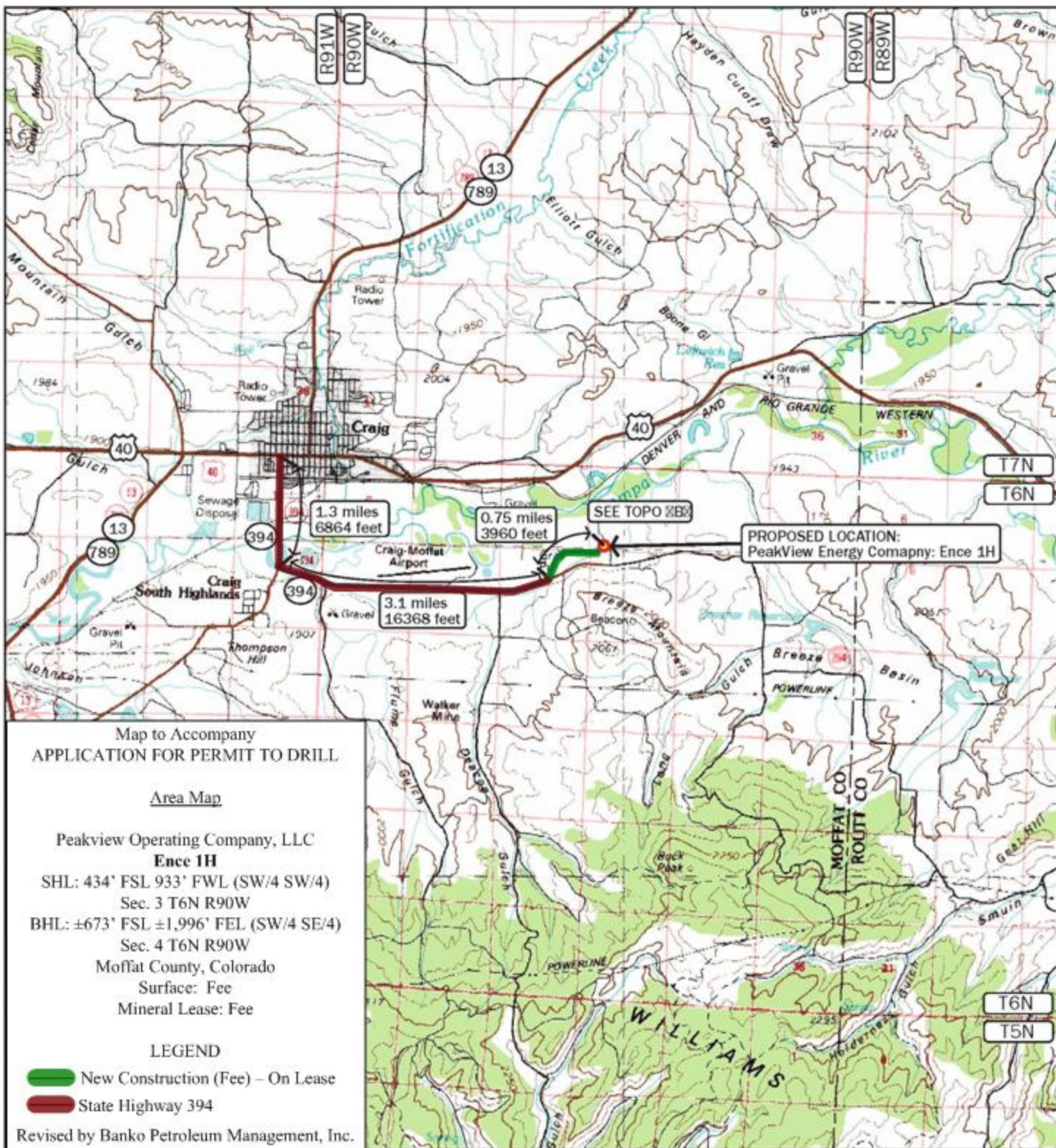
Peakview Operating Company, LLC  
216 Sixteenth Street, Suite 1450  
Denver, CO 80202

**Ence 1H**  
SW1/4 SW1/4  
SECTION 3, T6N R90W, 6TH P.M.  
MOFFAT COUNTY, COLORADO  
434.1' FSL 932.9' FWL

DOWLING LAND SURVEYORS, LLC  
P.O. BOX 954  
HAYDEN, COLORADO 81639  
(970) 276-3613  
dowling@plotz.biz

SCALE	DWG	DTS	FILE
		08/28/12	FF111111





# **LEGEND:**

## **ACCESS ROAD MAP: A TOPO**

Proposed Location



Peakview Operating Company, LLC.  
216 Sixteenth Street, Suite 1450  
Denver, CO 80202

**Ence 1H**  
SW1/4 SW1/4  
SECTION 3, T6N R90W, 6TH P.M.  
MOFFAT COUNTY, COLORADO  
434.1' FSL 932.9' FWL

DOWLING LAND SURVEYORS, LLC  
P.O. BOX 954  
HAYDEN, COLORADO 81639  
(970) 276-3613  
dowling@plotz.biz

SCALE	DRG	DATE	FILE
		08/03/12	14412efph