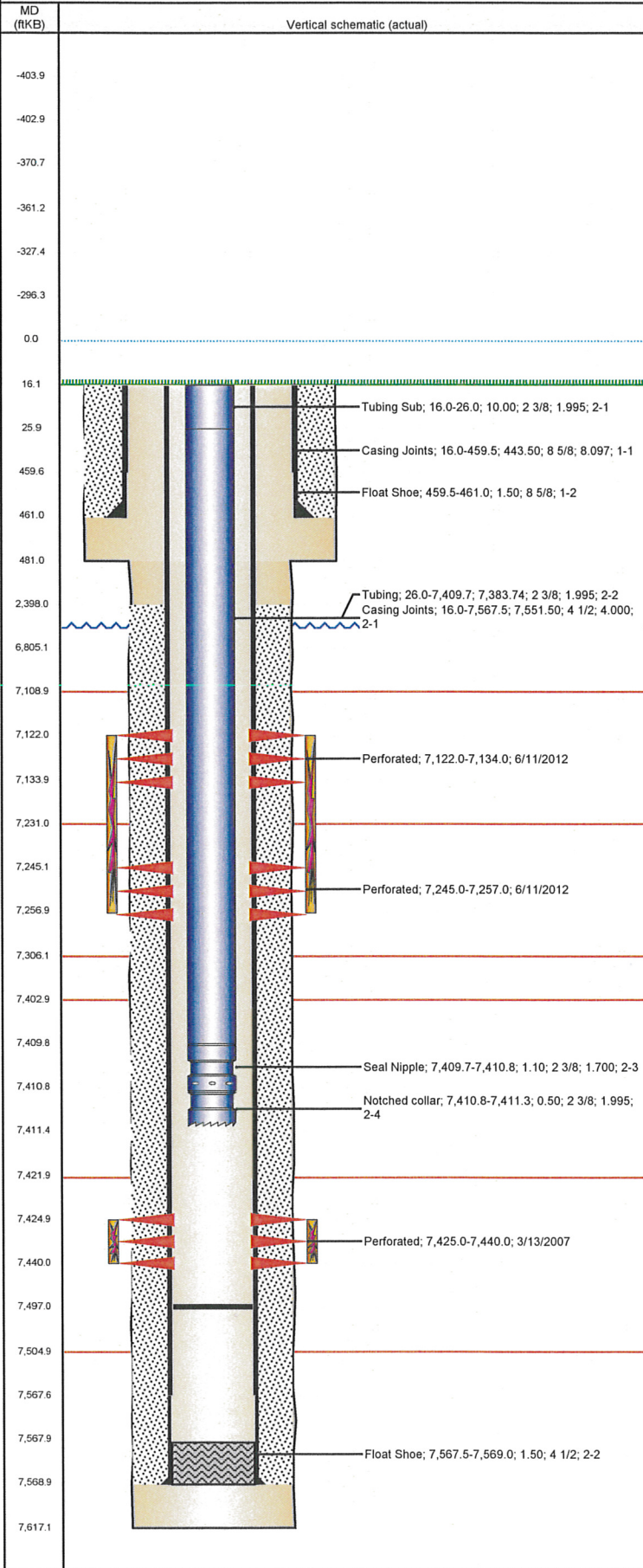


**Well Name: DUKE J04-25**

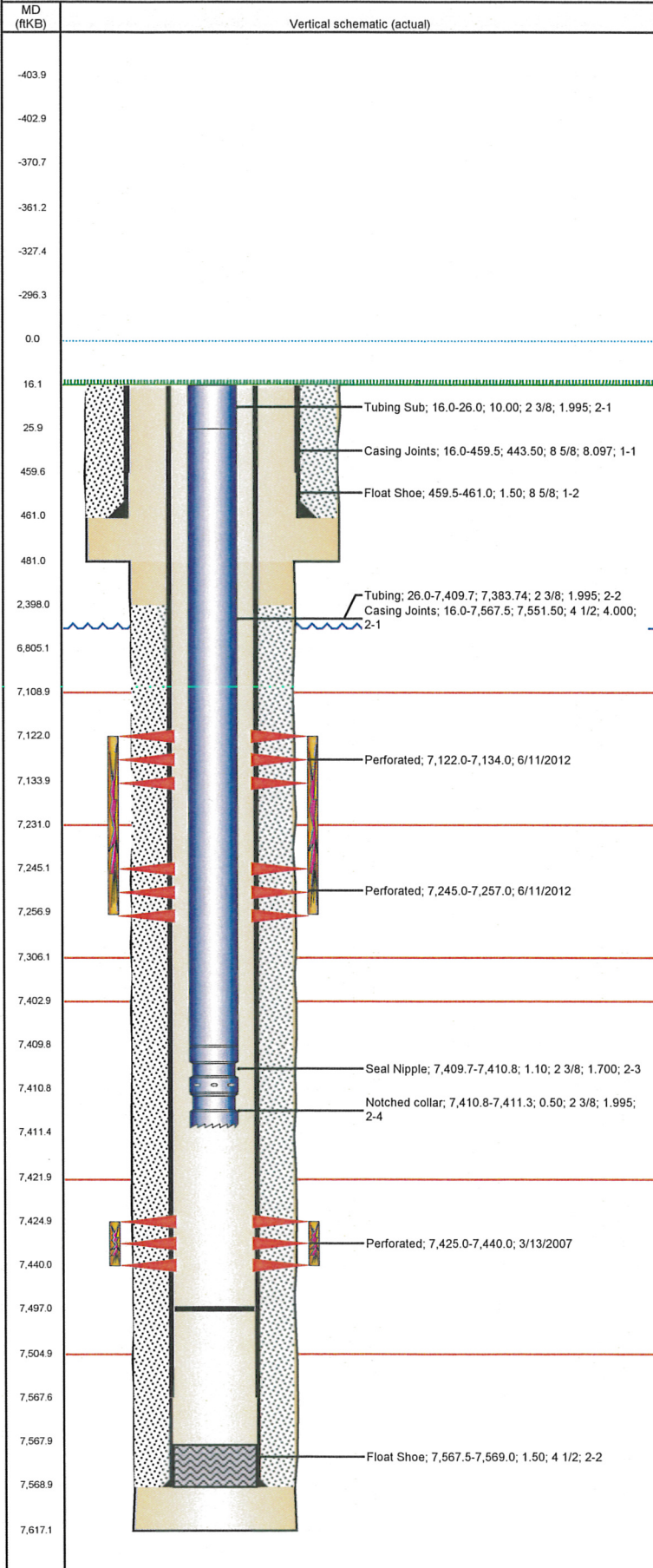
DEVIATED - ORIGINAL HOLE, 8/23/2012 2:15:42 PM



Well Header									
API 05-123-27326		Business Unit WATTENBERG		District 15		Well Config DEVIATED			
Original KB Elevation (ft) 4,797.00		KB - GL / MSL (ftKB) 16.00		Spud Date 12/10/2006		P & A Date			
Comment									
Directions To Well W 10TH ST AND 71ST AVE. N 2/10, E 1/10, N 1/10 INTO									
Current PBTD (ftKB) ORIGINAL HOLE - 7,497.0									
Surface Location (Congressional)									
Quarter 1	Quarter 2	Quarter 3 NW	Quarter 4 SW	Section 4	Township 5 N	Twntshp N...	Range 66	Rng E/W Dir W	
Bottom Hole Location									
North-South Distance (ft) 1,337.0			From N or S Line FSL		East-West Distance (ft) 1,414.0		From E or W Line FWL		
Plug Back Total Depths									
Date	Depth (ftKB)		Method		Com				
12/15/2006	7,568.0		CASING TALLY		ORIGINAL PBTD, GUIDE SHOE				
2/16/2007	7,536.0		CASED HOLE LOG		DEPTH LOGGER				
Wellbore Sections									
Section Des		Size (in)		Act Top (ftKB)		Act Btm (ftKB)			
SURFACE		12 1/4		16.0		481.0			
PRODUCTION		7 7/8		481.0		7,617.0			
Zone Statuses									
Zone Name		Status Date		Status		Job			
CODELL		3/28/2007		PR		DRILLING/COMPLETION - ORIGINAL, 12/10/2006 00:00			
CODELL		6/25/2012		PR		RE-FRAC & RECOMPLETE, 5/14/2012 06:00			
NIOBRARA		6/25/2012		PR		RE-FRAC & RECOMPLETE, 5/14/2012 06:00			
Casing Strings									
Csg Des		Run Date		OD (in)	Wt/Len (lb/ft)	Grade	Top (ftKB)	Set Depth (ftKB)	
Surface		12/11/2006		8 5/8	24.00	J-55	16.0	461.0	
Production		12/15/2006		4 1/2	11.60	M-80	16.0	7,569.0	
Cement									
Des						Top (ftKB)		Btm (ftKB)	
SURFACE CASING CEMENT						16.0		461.0	
PRODUCTION CASING CEMENT						2,398.0		7,569.0	
Tubing Components									
Item Des		OD (in)	Wt (lb/ft)	Grade	Jts	Len (ft)			
Tubing Sub		2 3/8	4.70	J-55	1	10.00			
Tubing		2 3/8	4.70	J-55	241	7,383.74			
Seal Nipple		2 3/8	0.00	x	1	1.10			
Notched collar		2 3/8	0.00	x	1	0.50			
Perforation Data									
Zone		Bnch/Stg	Entered Shot Total	Top (ftKB)	Btm (ftKB)	Date			
NIOBRARA, ORIGINAL HOLE			24	7,122.0	7,134.0	6/11/2012			
NIOBRARA, ORIGINAL HOLE			24	7,245.0	7,257.0	6/11/2012			
CODELL, ORIGINAL HOLE			60	7,425.0	7,440.0	3/13/2007			
Stimulations & Treatments									
Bnch/Stg	Date	Zone			Primary Job Type				
	3/19/2007	CODELL, ORIGINAL HOLE			DRILLING/COMPLETION - ORIGINAL				
Comment									
Total Add Amount Proppant Ottawa 271980 lb			Total Clean Volume...		Vol Slurry Tot (gal) 128604.01		Vol Gas Tot (MCF)		
Avg Treat Pressure (psi) 7,407.0		Max Treat Pressure (psi) 7,635.0		Avg Treat Rate (bbl/min) 17.60		Max Treat Rate (bbl/min) 18.60			
Bnch/Stg	Date	Zone			Primary Job Type				
	6/11/2012	CODELL, ORIGINAL HOLE			RE-FRAC & RECOMPLETE				
Comment									
Total Add Amount Ottawa 247413.7 lb			Total Clean Volume...		Vol Slurry Tot (gal) 143406.48		Vol Gas Tot (MCF)		
Avg Treat Pressure (psi) 3,631.0		Max Treat Pressure (psi) 3,886.0		Avg Treat Rate (bbl/min) 14.50		Max Treat Rate (bbl/min) 14.80			

**Well Name: DUKE J04-25**

DEVIATED - ORIGINAL HOLE, 8/23/2012 2:15:42 PM



Stimulations & Treatments				
Bnch/Stg	Date	Zone	Primary Job Type	
	6/11/2012	NIOBRARA, ORIGINAL HOLE	RE-FRAC & RECOMPLETE	
Comment				
Total Add Amount		Total Clean Volume...	Vol Slurry Tot (gal)	Vol Gas Tot (MCF)
Ottawa 257002.5 lb		155949.36	167619.90	
Avg Treat Pressure (psi)	Max Treat Pressure (psi)	Avg Treat Rate (bbl/min)	Max Treat Rate (bbl/min)	
4,295.0	4,774.0	32.00	36.10	
Other In Hole				
Run Date	Des	OD (in)	Top (ftKB)	Btm (ftKB)
Logs				
Date	Type	Top (ftKB)	Btm (ftKB)	
12/15/2006	COMPENSATED DENSITY	2,000.0	7,576.0	
12/15/2006	INDUCTION	460.0	7,596.0	
2/16/2007	CBL/CCL/GR	2,250.0	7,535.0	