

NE Cor Sec 23  
1953 Brass Cap,  
0.6' High, Pile of  
Stones  
Lat: 39.695347°  
Long: 108.126444°

1953 Brass Cap,  
0.2' High, Pile of  
Stones, Steel Post  
Lat: 39.695158°  
Long: 108.126422°

**T4S, R96W, 6th P.M.**

**Rio Blanco Co.**

S89°51'03"W - 2648.68' (Meas. to True)  
S89°51'03"W - 2648.10' (Meas. to CC)

N89°47'21"W - 2639.69' (Meas.)

**Garfield Co.**  
**COC064814**

1953 Brass Cap,  
0.3' High, Pile of  
Stones  
Lat: 39.695158°  
Long: 108.117036°

1953 Brass Cap,  
1.5' High, Fence  
Post  
Lat: 39.695111°  
Long: 108.107661°

Lot 4

Lot 3

Lot 2

Lot 1

● TARGET BOTTOM HOLE

**COC064814**

LINE TABLE

LINE	BEARING	LENGTH
L1	N00°30'07"W	105.36'
L2	N00°04'12"E	68.88'

E 1/4 Cor. Sec. 23,  
1953 Brass Cap, 0.2'  
High, Steel Post  
Lat: 39.688369°  
Long: 108.126478°

W 1/4 Cor. Sec. 24,  
1953 Brass Cap, 0.9'  
High, Steel Post  
Lat: 39.688081°  
Long: 108.126475°

**SG 8504D-24 L24 496**

Elev. UnGraded Ground = 8185.4'

Elev. Graded Ground = 8180.0'

NOTE:  
THE PROPERTY LINE IS LOCATED  
N00°08'57"W 359.75' FROM THE  
PROPOSED WELL HEAD.

1953 Brass Cap,  
0.6' High, Steel  
Post  
Lat: 39.687869°  
Long: 108.107669°

1953 Brass Cap,  
0.5' High  
Lat: 39.680569°  
Long: 108.117119°

1953 Brass Cap,  
0.5' High, Pile of  
Stones, Steel Post  
Lat: 39.680594°  
Long: 108.107672°

**COC064814**

S89°40'00"W - 2641.14' (Meas.)

S89°39'25"W - 2660.17' (Meas.)

1953 Brass Cap  
0.5' High, Mound of  
Stones, Steel Post  
Lat: 39.680547°  
Long: 108.126500°

SEE SHEET 7A FOR EXISTING  
IMPROVEMENT WITHIN 400' OF THE  
PROPOSED WELL DISTURBANCE

**LEGEND:**

└─┘ = 90° SYMBOL

● = PROPOSED WELL HEAD.

▲ = SECTION CORNERS LOCATED.

PDOP = 1.3

NAD 83 (TARGET BOTTOM HOLE)	NAD 83 (SURFACE LOCATION)
LATITUDE = 39°41'33.91" (39.692753)	LATITUDE = 39°41'07.03" (39.685286)
LONGITUDE = 108°07'26.71" (108.124086)	LONGITUDE = 108°07'22.84" (108.123011)
NAD 27 (TARGET BOTTOM HOLE)	NAD 27 (SURFACE LOCATION)
LATITUDE = 39°41'34.00" (39.692778)	LATITUDE = 39°41'07.12" (39.685311)
LONGITUDE = 108°07'24.42" (108.123450)	LONGITUDE = 108°07'20.56" (108.122378)

**Encana OIL & GAS (USA) INC.**

Well location, SG 8504D-24 L24 496, located  
as shown in the NW 1/4 SW 1/4 of Section 24,  
T4S, R96W, 6th P.M., Garfield County, Colorado.

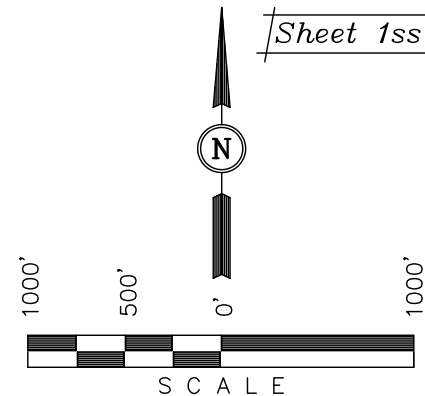
**BASIS OF ELEVATION**

BENCH MARK (H79) LOCATED IN THE NE 1/4 OF SECTION  
25, T4S, R98W, 6th P.M. TAKEN FROM THE BULL FORK  
QUADRANGLE, COLORADO, 7.5 MINUTE SERIES (TOPO  
GRAPHICAL MAP) PUBLISHED BY THE UNITED STATES  
DEPARTMENT OF THE INTERIOR, GEOLOGICAL SURVEY.  
SAID ELEVATION IS MARKED AS BEING 8535 FEET.

**BASIS OF BEARINGS**

BASIS OF BEARINGS IS A G.P.S. OBSERVATION.

*Sheet 1ss of 11*



**CERTIFICATE**

THIS IS TO CERTIFY THAT THE ABOVE PLAT WAS PREPARED AND  
LOCATION AS SHOWN WAS STAKED ON THE GROUND FROM FIELD  
NOTES OF ACTUAL SURVEYS MADE BY ME OR UNDER MY  
SUPERVISION AND THAT THE SAME ARE TRUE AND CORRECT TO  
THE BEST OF MY KNOWLEDGE AND BELIEF.

REGISTERED LAND SURVEYOR  
REGISTRATION NO. 17492  
STATE OF COLORADO

Revised: 04-01-12 D.R.B.

**UINTAH ENGINEERING & LAND SURVEYING**  
**85 SOUTH 200 EAST - VERNAL, UTAH 84078**  
**(435) 789-1017**

SCALE 1" = 1000'	DATE SURVEYED: 08-18-10	DATE DRAWN: 06-09-11
PARTY B.J. D.B. D.R.B.	REFERENCES G.L.O. PLAT	
WEATHER COOL	FILE Encana OIL & GAS (USA) INC.	