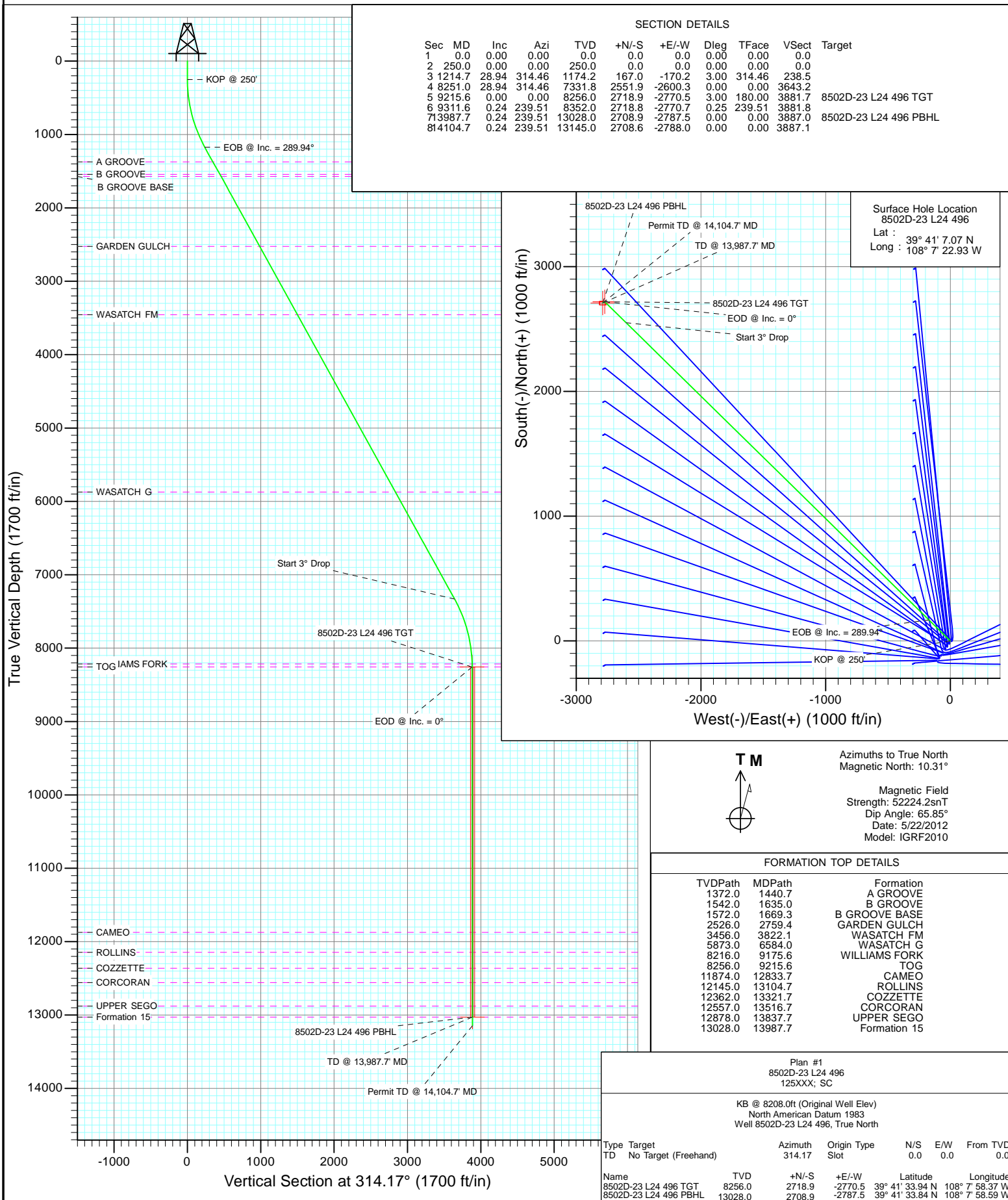
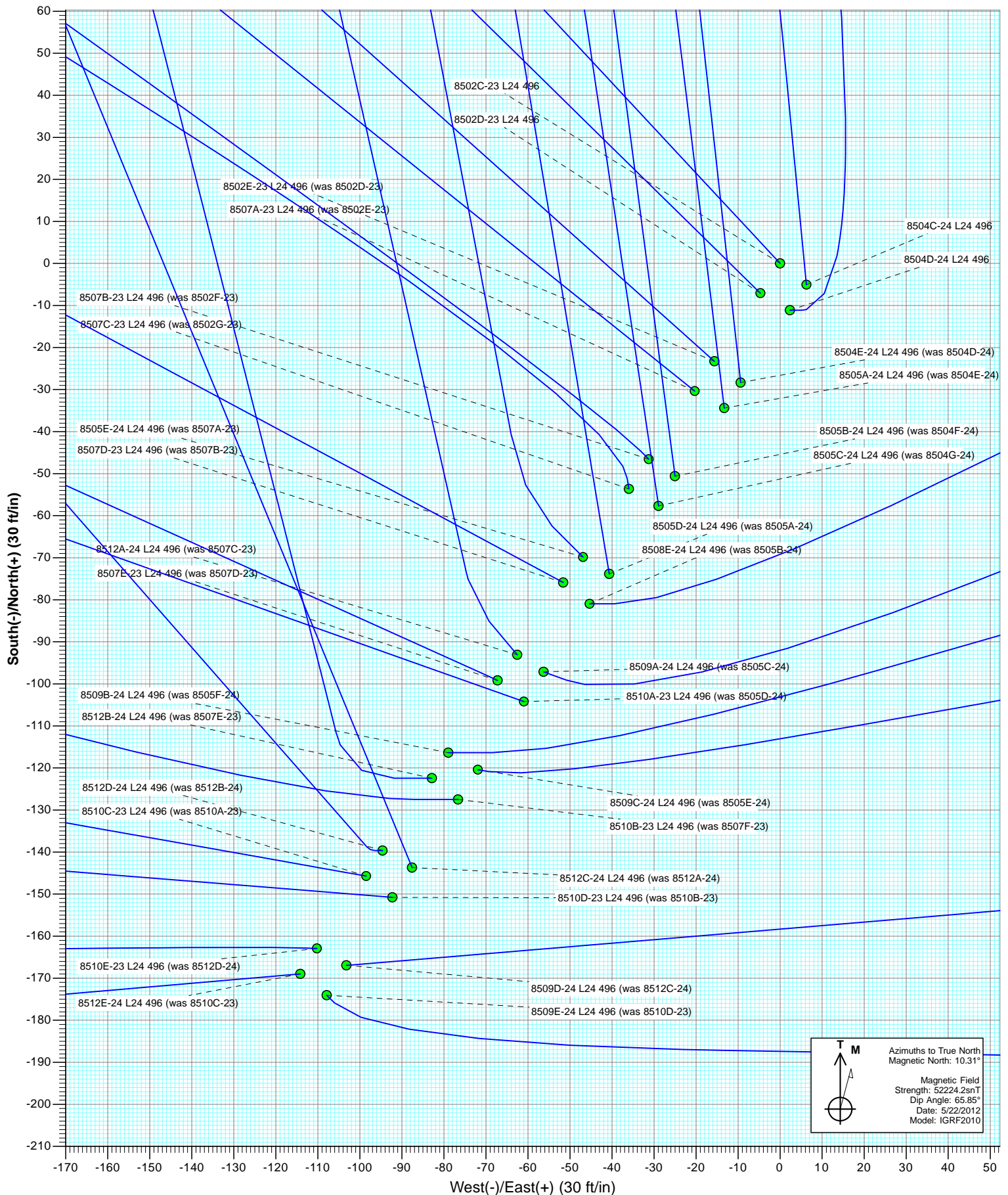
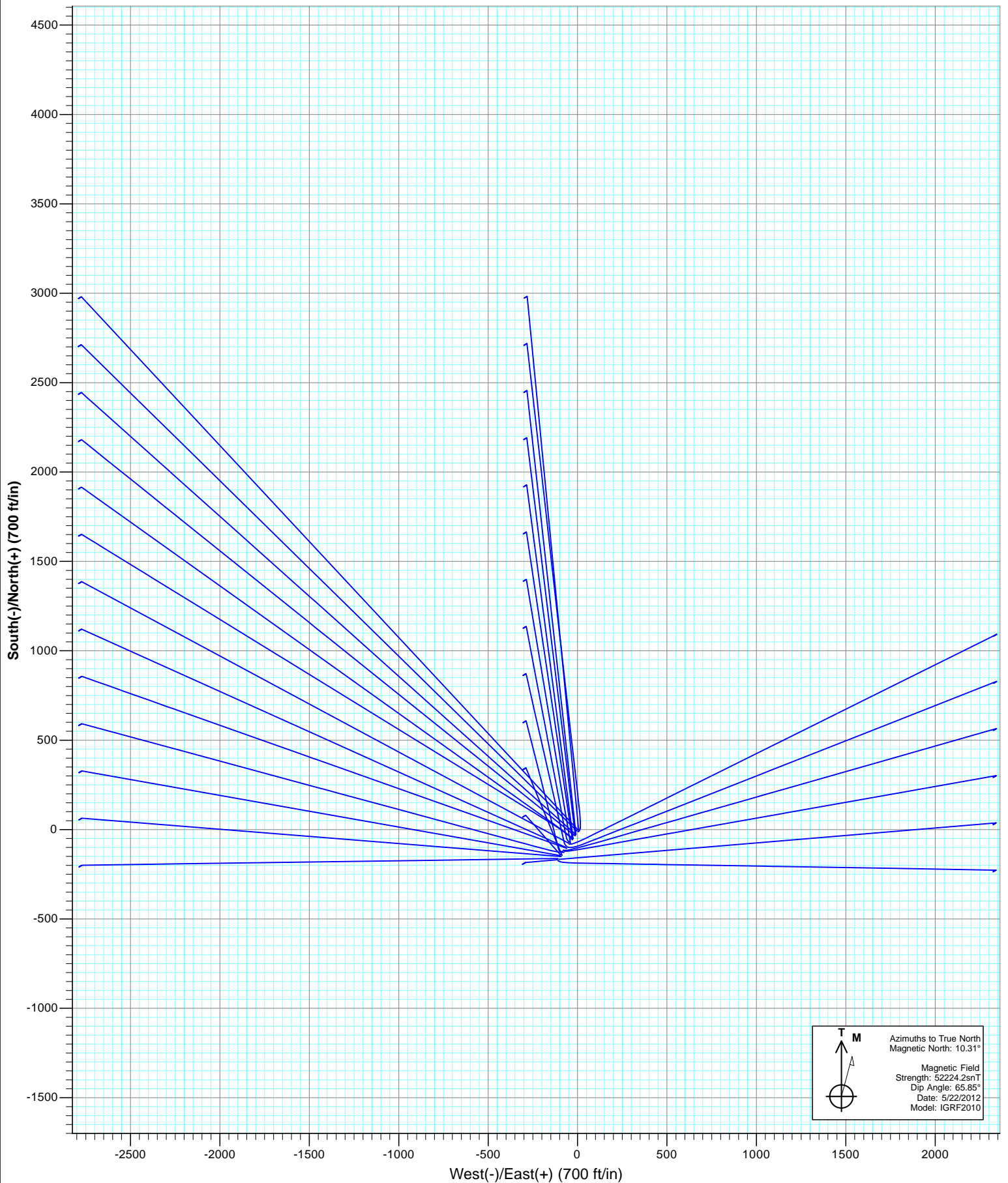




Project: Story Gulch
Site: L24 496
Well: 8502D-23 L24 496
Wellbore: DD
Design: Plan #1







Cathedral Energy Services

Planning Report

Database:	USA EDM 5000 Multi Users DB	Local Co-ordinate Reference:	Well 8502D-23 L24 496
Company:	EnCana Oil & Gas (USA) Inc	TVD Reference:	KB @ 8208.0ft (Original Well Elev)
Project:	Story Gulch	MD Reference:	KB @ 8208.0ft (Original Well Elev)
Site:	L24 496	North Reference:	True
Well:	8502D-23 L24 496	Survey Calculation Method:	Minimum Curvature
Wellbore:	DD		
Design:	Plan #1		

Project	Story Gulch		
Map System:	US State Plane 1983	System Datum:	Mean Sea Level
Geo Datum:	North American Datum 1983		
Map Zone:	Colorado Central Zone		

Site	L24 496			
Site Position:		Northing:	1,685,024.52 ft	Latitude: 39° 41' 5.72 N
From:	Lat/Long	Easting:	2,261,789.15 ft	Longitude: 108° 7' 23.99 W
Position Uncertainty:	0.0 ft	Slot Radius:	13.200 in	Grid Convergence: -1.65 °

Well	8502D-23 L24 496			
Well Position	+N/-S	0.0 ft	Northing:	1,685,158.65 ft
	+E/-W	0.0 ft	Easting:	2,261,875.93 ft
Position Uncertainty	0.0 ft	Wellhead Elevation:	ft	Ground Level: 8,193.0 ft

Wellbore	DD				
Magnetics	Model Name	Sample Date	Declination (°)	Dip Angle (°)	Field Strength (nT)
	IGRF2010	5/22/2012	10.31	65.85	52,224

Design	Plan #1			
Audit Notes:				
Version:	Phase:	PLAN	Tie On Depth:	0.0
Vertical Section:	Depth From (TVD) (ft)	+N/-S (ft)	+E/-W (ft)	Direction (°)
	0.0	0.0	0.0	314.17

Plan Sections										
Measured Depth (ft)	Inclination (°)	Azimuth (°)	Vertical Depth (ft)	+N/-S (ft)	+E/-W (ft)	Dogleg Rate (°/100ft)	Build Rate (°/100ft)	Turn Rate (°/100ft)	TFO (°)	Target
0.0	0.00	0.00	0.0	0.0	0.0	0.00	0.00	0.00	0.00	
250.0	0.00	0.00	250.0	0.0	0.0	0.00	0.00	0.00	0.00	
1,214.7	28.94	314.46	1,174.2	167.0	-170.2	3.00	3.00	0.00	314.46	
8,251.0	28.94	314.46	7,331.8	2,551.9	-2,600.3	0.00	0.00	0.00	0.00	
9,215.6	0.00	0.00	8,256.0	2,718.9	-2,770.5	3.00	-3.00	0.00	180.00	8502D-23 L24 496 TC
9,311.6	0.24	239.51	8,352.0	2,718.8	-2,770.7	0.25	0.25	-125.57	239.51	
13,987.7	0.24	239.51	13,028.0	2,708.9	-2,787.5	0.00	0.00	0.00	0.00	8502D-23 L24 496 PE
14,104.7	0.24	239.51	13,145.0	2,708.6	-2,788.0	0.00	0.00	0.00	0.00	

Cathedral Energy Services

Planning Report

Database:	USA EDM 5000 Multi Users DB	Local Co-ordinate Reference:	Well 8502D-23 L24 496
Company:	EnCana Oil & Gas (USA) Inc	TVD Reference:	KB @ 8208.0ft (Original Well Elev)
Project:	Story Gulch	MD Reference:	KB @ 8208.0ft (Original Well Elev)
Site:	L24 496	North Reference:	True
Well:	8502D-23 L24 496	Survey Calculation Method:	Minimum Curvature
Wellbore:	DD		
Design:	Plan #1		

Planned Survey

Measured Depth (ft)	Inclination (°)	Azimuth (°)	Vertical Depth (ft)	+N/-S (ft)	+E/-W (ft)	Vertical Section (ft)	Dogleg Rate (°/100ft)	Build Rate (°/100ft)	Comments / Formations
0.0	0.00	0.00	0.0	0.0	0.0	0.0	0.00	0.00	
100.0	0.00	0.00	100.0	0.0	0.0	0.0	0.00	0.00	
200.0	0.00	0.00	200.0	0.0	0.0	0.0	0.00	0.00	
250.0	0.00	0.00	250.0	0.0	0.0	0.0	0.00	0.00	KOP @ 250'
300.0	1.50	314.46	300.0	0.5	-0.5	0.7	3.00	3.00	
400.0	4.50	314.46	399.8	4.1	-4.2	5.9	3.00	3.00	
500.0	7.50	314.46	499.3	11.4	-11.7	16.3	3.00	3.00	
600.0	10.50	314.46	598.0	22.4	-22.8	32.0	3.00	3.00	
700.0	13.50	314.46	695.8	37.0	-37.7	52.8	3.00	3.00	
800.0	16.50	314.46	792.4	55.1	-56.1	78.6	3.00	3.00	
900.0	19.50	314.46	887.5	76.7	-78.2	109.5	3.00	3.00	
1,000.0	22.50	314.46	980.9	101.8	-103.8	145.4	3.00	3.00	
1,100.0	25.50	314.46	1,072.2	130.3	-132.8	186.0	3.00	3.00	
1,200.0	28.50	314.46	1,161.3	162.1	-165.2	231.4	3.00	3.00	
1,214.7	28.94	314.46	1,174.2	167.0	-170.2	238.5	3.00	3.00	EOB @ Inc. = 289.94°
1,300.0	28.94	314.46	1,248.8	196.0	-199.7	279.8	0.00	0.00	
1,400.0	28.94	314.46	1,336.4	229.9	-234.2	328.2	0.00	0.00	
1,440.7	28.94	314.46	1,372.0	243.7	-248.3	347.9	0.00	0.00	A GROOVE
1,500.0	28.94	314.46	1,423.9	263.8	-268.8	376.6	0.00	0.00	
1,600.0	28.94	314.46	1,511.4	297.6	-303.3	424.9	0.00	0.00	
1,635.0	28.94	314.46	1,542.0	309.5	-315.4	441.9	0.00	0.00	B GROOVE
1,669.3	28.94	314.46	1,572.0	321.1	-327.2	458.5	0.00	0.00	B GROOVE BASE
1,700.0	28.94	314.46	1,598.9	331.5	-337.8	473.3	0.00	0.00	
1,800.0	28.94	314.46	1,686.4	365.4	-372.4	521.7	0.00	0.00	
1,900.0	28.94	314.46	1,773.9	399.3	-406.9	570.1	0.00	0.00	
2,000.0	28.94	314.46	1,861.4	433.2	-441.4	618.5	0.00	0.00	
2,100.0	28.94	314.46	1,948.9	467.1	-476.0	666.9	0.00	0.00	
2,200.0	28.94	314.46	2,036.5	501.0	-510.5	715.3	0.00	0.00	
2,300.0	28.94	314.46	2,124.0	534.9	-545.0	763.7	0.00	0.00	
2,400.0	28.94	314.46	2,211.5	568.8	-579.6	812.0	0.00	0.00	
2,500.0	28.94	314.46	2,299.0	602.7	-614.1	860.4	0.00	0.00	
2,600.0	28.94	314.46	2,386.5	636.6	-648.7	908.8	0.00	0.00	
2,700.0	28.94	314.46	2,474.0	670.5	-683.2	957.2	0.00	0.00	
2,759.4	28.94	314.46	2,526.0	690.6	-703.7	986.0	0.00	0.00	GARDEN GULCH
2,800.0	28.94	314.46	2,561.5	704.4	-717.7	1,005.6	0.00	0.00	
2,900.0	28.94	314.46	2,649.1	738.3	-752.3	1,054.0	0.00	0.00	
3,000.0	28.94	314.46	2,736.6	772.1	-786.8	1,102.4	0.00	0.00	
3,100.0	28.94	314.46	2,824.1	806.0	-821.3	1,150.8	0.00	0.00	
3,200.0	28.94	314.46	2,911.6	839.9	-855.9	1,199.2	0.00	0.00	
3,300.0	28.94	314.46	2,999.1	873.8	-890.4	1,247.5	0.00	0.00	
3,400.0	28.94	314.46	3,086.6	907.7	-924.9	1,295.9	0.00	0.00	
3,500.0	28.94	314.46	3,174.1	941.6	-959.5	1,344.3	0.00	0.00	
3,600.0	28.94	314.46	3,261.6	975.5	-994.0	1,392.7	0.00	0.00	
3,700.0	28.94	314.46	3,349.2	1,009.4	-1,028.6	1,441.1	0.00	0.00	
3,800.0	28.94	314.46	3,436.7	1,043.3	-1,063.1	1,489.5	0.00	0.00	
3,822.1	28.94	314.46	3,456.0	1,050.8	-1,070.7	1,500.2	0.00	0.00	WASATCH FM
3,900.0	28.94	314.46	3,524.2	1,077.2	-1,097.6	1,537.9	0.00	0.00	
4,000.0	28.94	314.46	3,611.7	1,111.1	-1,132.2	1,586.3	0.00	0.00	
4,100.0	28.94	314.46	3,699.2	1,145.0	-1,166.7	1,634.7	0.00	0.00	
4,200.0	28.94	314.46	3,786.7	1,178.9	-1,201.2	1,683.0	0.00	0.00	
4,300.0	28.94	314.46	3,874.2	1,212.8	-1,235.8	1,731.4	0.00	0.00	
4,400.0	28.94	314.46	3,961.7	1,246.7	-1,270.3	1,779.8	0.00	0.00	

Cathedral Energy Services

Planning Report

Database:	USA EDM 5000 Multi Users DB	Local Co-ordinate Reference:	Well 8502D-23 L24 496
Company:	EnCana Oil & Gas (USA) Inc	TVD Reference:	KB @ 8208.0ft (Original Well Elev)
Project:	Story Gulch	MD Reference:	KB @ 8208.0ft (Original Well Elev)
Site:	L24 496	North Reference:	True
Well:	8502D-23 L24 496	Survey Calculation Method:	Minimum Curvature
Wellbore:	DD		
Design:	Plan #1		

Planned Survey

Measured Depth (ft)	Inclination (°)	Azimuth (°)	Vertical Depth (ft)	+N/-S (ft)	+E/-W (ft)	Vertical Section (ft)	Dogleg Rate (°/100ft)	Build Rate (°/100ft)	Comments / Formations
4,500.0	28.94	314.46	4,049.3	1,280.5	-1,304.8	1,828.2	0.00	0.00	
4,600.0	28.94	314.46	4,136.8	1,314.4	-1,339.4	1,876.6	0.00	0.00	
4,700.0	28.94	314.46	4,224.3	1,348.3	-1,373.9	1,925.0	0.00	0.00	
4,800.0	28.94	314.46	4,311.8	1,382.2	-1,408.5	1,973.4	0.00	0.00	
4,900.0	28.94	314.46	4,399.3	1,416.1	-1,443.0	2,021.8	0.00	0.00	
5,000.0	28.94	314.46	4,486.8	1,450.0	-1,477.5	2,070.1	0.00	0.00	
5,100.0	28.94	314.46	4,574.3	1,483.9	-1,512.1	2,118.5	0.00	0.00	
5,200.0	28.94	314.46	4,661.8	1,517.8	-1,546.6	2,166.9	0.00	0.00	
5,300.0	28.94	314.46	4,749.4	1,551.7	-1,581.1	2,215.3	0.00	0.00	
5,400.0	28.94	314.46	4,836.9	1,585.6	-1,615.7	2,263.7	0.00	0.00	
5,500.0	28.94	314.46	4,924.4	1,619.5	-1,650.2	2,312.1	0.00	0.00	
5,600.0	28.94	314.46	5,011.9	1,653.4	-1,684.7	2,360.5	0.00	0.00	
5,700.0	28.94	314.46	5,099.4	1,687.3	-1,719.3	2,408.9	0.00	0.00	
5,800.0	28.94	314.46	5,186.9	1,721.2	-1,753.8	2,457.3	0.00	0.00	
5,900.0	28.94	314.46	5,274.4	1,755.0	-1,788.4	2,505.6	0.00	0.00	
6,000.0	28.94	314.46	5,362.0	1,788.9	-1,822.9	2,554.0	0.00	0.00	
6,100.0	28.94	314.46	5,449.5	1,822.8	-1,857.4	2,602.4	0.00	0.00	
6,200.0	28.94	314.46	5,537.0	1,856.7	-1,892.0	2,650.8	0.00	0.00	
6,300.0	28.94	314.46	5,624.5	1,890.6	-1,926.5	2,699.2	0.00	0.00	
6,400.0	28.94	314.46	5,712.0	1,924.5	-1,961.0	2,747.6	0.00	0.00	
6,500.0	28.94	314.46	5,799.5	1,958.4	-1,995.6	2,796.0	0.00	0.00	
6,584.0	28.94	314.46	5,873.0	1,986.9	-2,024.6	2,836.6	0.00	0.00	WASATCH G
6,600.0	28.94	314.46	5,887.0	1,992.3	-2,030.1	2,844.4	0.00	0.00	
6,700.0	28.94	314.46	5,974.5	2,026.2	-2,064.6	2,892.7	0.00	0.00	
6,800.0	28.94	314.46	6,062.1	2,060.1	-2,099.2	2,941.1	0.00	0.00	
6,900.0	28.94	314.46	6,149.6	2,094.0	-2,133.7	2,989.5	0.00	0.00	
7,000.0	28.94	314.46	6,237.1	2,127.9	-2,168.3	3,037.9	0.00	0.00	
7,100.0	28.94	314.46	6,324.6	2,161.8	-2,202.8	3,086.3	0.00	0.00	
7,200.0	28.94	314.46	6,412.1	2,195.7	-2,237.3	3,134.7	0.00	0.00	
7,300.0	28.94	314.46	6,499.6	2,229.6	-2,271.9	3,183.1	0.00	0.00	
7,400.0	28.94	314.46	6,587.1	2,263.4	-2,306.4	3,231.5	0.00	0.00	
7,500.0	28.94	314.46	6,674.6	2,297.3	-2,340.9	3,279.9	0.00	0.00	
7,600.0	28.94	314.46	6,762.2	2,331.2	-2,375.5	3,328.2	0.00	0.00	
7,700.0	28.94	314.46	6,849.7	2,365.1	-2,410.0	3,376.6	0.00	0.00	
7,800.0	28.94	314.46	6,937.2	2,399.0	-2,444.5	3,425.0	0.00	0.00	
7,900.0	28.94	314.46	7,024.7	2,432.9	-2,479.1	3,473.4	0.00	0.00	
8,000.0	28.94	314.46	7,112.2	2,466.8	-2,513.6	3,521.8	0.00	0.00	
8,100.0	28.94	314.46	7,199.7	2,500.7	-2,548.1	3,570.2	0.00	0.00	
8,200.0	28.94	314.46	7,287.2	2,534.6	-2,582.7	3,618.6	0.00	0.00	
8,251.0	28.94	314.46	7,331.8	2,551.9	-2,600.3	3,643.2	0.00	0.00	Strat 3° Drop
8,300.0	27.47	314.46	7,375.1	2,568.1	-2,616.8	3,666.4	3.00	-3.00	
8,400.0	24.47	314.46	7,464.9	2,598.8	-2,648.1	3,710.2	3.00	-3.00	
8,500.0	21.47	314.46	7,557.0	2,626.1	-2,675.9	3,749.2	3.00	-3.00	
8,600.0	18.47	314.46	7,651.0	2,650.0	-2,700.3	3,783.4	3.00	-3.00	
8,700.0	15.47	314.46	7,746.6	2,670.4	-2,721.1	3,812.5	3.00	-3.00	
8,800.0	12.47	314.46	7,843.6	2,687.4	-2,738.3	3,836.7	3.00	-3.00	
8,900.0	9.47	314.46	7,941.8	2,700.7	-2,751.9	3,855.7	3.00	-3.00	
9,000.0	6.47	314.46	8,040.8	2,710.4	-2,761.8	3,869.6	3.00	-3.00	
9,100.0	3.47	314.46	8,140.4	2,716.5	-2,768.0	3,878.2	3.00	-3.00	
9,175.6	1.20	314.46	8,216.0	2,718.6	-2,770.2	3,881.3	3.00	-3.00	WILLIAMS FORK
9,200.0	0.47	314.46	8,240.4	2,718.9	-2,770.5	3,881.7	3.00	-3.00	
9,215.6	0.00	0.00	8,256.0	2,718.9	-2,770.5	3,881.7	3.00	-3.00	EOD @ Inc. = 0° - TOG

Cathedral Energy Services

Planning Report

Database:	USA EDM 5000 Multi Users DB	Local Co-ordinate Reference:	Well 8502D-23 L24 496
Company:	EnCana Oil & Gas (USA) Inc	TVD Reference:	KB @ 8208.0ft (Original Well Elev)
Project:	Story Gulch	MD Reference:	KB @ 8208.0ft (Original Well Elev)
Site:	L24 496	North Reference:	True
Well:	8502D-23 L24 496	Survey Calculation Method:	Minimum Curvature
Wellbore:	DD		
Design:	Plan #1		

Planned Survey

Measured Depth (ft)	Inclination (°)	Azimuth (°)	Vertical Depth (ft)	+N/-S (ft)	+E/-W (ft)	Vertical Section (ft)	Dogleg Rate (°/100ft)	Build Rate (°/100ft)	Comments / Formations
9,300.0	0.21	239.51	8,340.4	2,718.8	-2,770.6	3,881.8	0.25	0.25	
9,311.6	0.24	239.51	8,352.0	2,718.8	-2,770.7	3,881.8	0.25	0.25	
9,400.0	0.24	239.51	8,440.4	2,718.6	-2,771.0	3,881.9	0.00	0.00	
9,500.0	0.24	239.51	8,540.4	2,718.4	-2,771.4	3,882.0	0.00	0.00	
9,600.0	0.24	239.51	8,640.4	2,718.2	-2,771.7	3,882.1	0.00	0.00	
9,700.0	0.24	239.51	8,740.4	2,718.0	-2,772.1	3,882.2	0.00	0.00	
9,800.0	0.24	239.51	8,840.4	2,717.8	-2,772.4	3,882.3	0.00	0.00	
9,900.0	0.24	239.51	8,940.4	2,717.6	-2,772.8	3,882.4	0.00	0.00	
10,000.0	0.24	239.51	9,040.4	2,717.3	-2,773.2	3,882.5	0.00	0.00	
10,100.0	0.24	239.51	9,140.4	2,717.1	-2,773.5	3,882.6	0.00	0.00	
10,200.0	0.24	239.51	9,240.4	2,716.9	-2,773.9	3,882.8	0.00	0.00	
10,300.0	0.24	239.51	9,340.4	2,716.7	-2,774.2	3,882.9	0.00	0.00	
10,400.0	0.24	239.51	9,440.4	2,716.5	-2,774.6	3,883.0	0.00	0.00	
10,500.0	0.24	239.51	9,540.4	2,716.3	-2,775.0	3,883.1	0.00	0.00	
10,600.0	0.24	239.51	9,640.4	2,716.1	-2,775.3	3,883.2	0.00	0.00	
10,700.0	0.24	239.51	9,740.4	2,715.9	-2,775.7	3,883.3	0.00	0.00	
10,800.0	0.24	239.51	9,840.4	2,715.6	-2,776.0	3,883.4	0.00	0.00	
10,900.0	0.24	239.51	9,940.4	2,715.4	-2,776.4	3,883.5	0.00	0.00	
11,000.0	0.24	239.51	10,040.4	2,715.2	-2,776.8	3,883.6	0.00	0.00	
11,100.0	0.24	239.51	10,140.4	2,715.0	-2,777.1	3,883.8	0.00	0.00	
11,200.0	0.24	239.51	10,240.4	2,714.8	-2,777.5	3,883.9	0.00	0.00	
11,300.0	0.24	239.51	10,340.4	2,714.6	-2,777.8	3,884.0	0.00	0.00	
11,400.0	0.24	239.51	10,440.4	2,714.4	-2,778.2	3,884.1	0.00	0.00	
11,500.0	0.24	239.51	10,540.4	2,714.2	-2,778.6	3,884.2	0.00	0.00	
11,600.0	0.24	239.51	10,640.4	2,713.9	-2,778.9	3,884.3	0.00	0.00	
11,700.0	0.24	239.51	10,740.4	2,713.7	-2,779.3	3,884.4	0.00	0.00	
11,800.0	0.24	239.51	10,840.4	2,713.5	-2,779.7	3,884.5	0.00	0.00	
11,900.0	0.24	239.51	10,940.4	2,713.3	-2,780.0	3,884.6	0.00	0.00	
12,000.0	0.24	239.51	11,040.4	2,713.1	-2,780.4	3,884.7	0.00	0.00	
12,100.0	0.24	239.51	11,140.4	2,712.9	-2,780.7	3,884.9	0.00	0.00	
12,200.0	0.24	239.51	11,240.4	2,712.7	-2,781.1	3,885.0	0.00	0.00	
12,300.0	0.24	239.51	11,340.3	2,712.5	-2,781.5	3,885.1	0.00	0.00	
12,400.0	0.24	239.51	11,440.3	2,712.2	-2,781.8	3,885.2	0.00	0.00	
12,500.0	0.24	239.51	11,540.3	2,712.0	-2,782.2	3,885.3	0.00	0.00	
12,600.0	0.24	239.51	11,640.3	2,711.8	-2,782.5	3,885.4	0.00	0.00	
12,700.0	0.24	239.51	11,740.3	2,711.6	-2,782.9	3,885.5	0.00	0.00	
12,800.0	0.24	239.51	11,840.3	2,711.4	-2,783.3	3,885.6	0.00	0.00	
12,833.7	0.24	239.51	11,874.0	2,711.3	-2,783.4	3,885.7	0.00	0.00	CAMEO
12,900.0	0.24	239.51	11,940.3	2,711.2	-2,783.6	3,885.7	0.00	0.00	
13,000.0	0.24	239.51	12,040.3	2,711.0	-2,784.0	3,885.9	0.00	0.00	
13,100.0	0.24	239.51	12,140.3	2,710.8	-2,784.3	3,886.0	0.00	0.00	
13,104.7	0.24	239.51	12,145.0	2,710.7	-2,784.4	3,886.0	0.00	0.00	ROLLINS
13,200.0	0.24	239.51	12,240.3	2,710.5	-2,784.7	3,886.1	0.00	0.00	
13,300.0	0.24	239.51	12,340.3	2,710.3	-2,785.1	3,886.2	0.00	0.00	
13,321.7	0.24	239.51	12,362.0	2,710.3	-2,785.1	3,886.2	0.00	0.00	COZZETTE
13,400.0	0.24	239.51	12,440.3	2,710.1	-2,785.4	3,886.3	0.00	0.00	
13,500.0	0.24	239.51	12,540.3	2,709.9	-2,785.8	3,886.4	0.00	0.00	
13,516.7	0.24	239.51	12,557.0	2,709.9	-2,785.8	3,886.4	0.00	0.00	CORCORAN
13,600.0	0.24	239.51	12,640.3	2,709.7	-2,786.1	3,886.5	0.00	0.00	
13,700.0	0.24	239.51	12,740.3	2,709.5	-2,786.5	3,886.6	0.00	0.00	
13,800.0	0.24	239.51	12,840.3	2,709.3	-2,786.9	3,886.7	0.00	0.00	
13,837.7	0.24	239.51	12,878.0	2,709.2	-2,787.0	3,886.8	0.00	0.00	UPPER SEGO

Cathedral Energy Services

Planning Report

Database:	USA EDM 5000 Multi Users DB	Local Co-ordinate Reference:	Well 8502D-23 L24 496
Company:	EnCana Oil & Gas (USA) Inc	TVD Reference:	KB @ 8208.0ft (Original Well Elev)
Project:	Story Gulch	MD Reference:	KB @ 8208.0ft (Original Well Elev)
Site:	L24 496	North Reference:	True
Well:	8502D-23 L24 496	Survey Calculation Method:	Minimum Curvature
Wellbore:	DD		
Design:	Plan #1		

Planned Survey

Measured Depth (ft)	Inclination (°)	Azimuth (°)	Vertical Depth (ft)	+N/-S (ft)	+E/-W (ft)	Vertical Section (ft)	Dogleg Rate (°/100ft)	Build Rate (°/100ft)	Comments / Formations
13,900.0	0.24	239.51	12,940.3	2,709.1	-2,787.2	3,886.9	0.00	0.00	
13,987.7	0.24	239.51	13,028.0	2,708.9	-2,787.5	3,887.0	0.00	0.00	TD @ 13,987.7' MD - Formation 15
14,000.0	0.24	239.51	13,040.3	2,708.8	-2,787.6	3,887.0	0.00	0.00	
14,104.7	0.24	239.51	13,145.0	2,708.6	-2,788.0	3,887.1	0.00	0.00	Permit TD @ 14,104.7' MD

Targets

Target Name

- hit/miss target - Shape	Dip Angle (°)	Dip Dir. (°)	TVD (ft)	+N/-S (ft)	+E/-W (ft)	Northing (ft)	Easting (ft)	Latitude	Longitude
8502D-23 L24 496 TGT - plan hits target center - Point	0.00	0.00	8,256.0	2,718.9	-2,770.5	1,687,956.41	2,259,185.08	39° 41' 33.94 N	108° 7' 58.37 W
8502D-23 L24 496 PBHI - plan hits target center - Rectangle (sides W30.0 H50.0 D0.0)	0.00	0.00	13,028.0	2,708.9	-2,787.5	1,687,946.87	2,259,167.75	39° 41' 33.84 N	108° 7' 58.59 W

Formations

Measured Depth (ft)	Vertical Depth (ft)	Name	Lithology	Dip (°)	Dip Direction (°)
1,440.7	1,372.0	A GROOVE			
1,635.0	1,542.0	B GROOVE			
1,669.3	1,572.0	B GROOVE BASE			
2,759.4	2,526.0	GARDEN GULCH			
3,822.1	3,456.0	WASATCH FM			
6,584.0	5,873.0	WASATCH G			
9,175.6	8,216.0	WILLIAMS FORK			
9,215.6	8,256.0	TOG			
12,833.7	11,874.0	CAMEO			
13,104.7	12,145.0	ROLLINS			
13,321.7	12,362.0	COZZETTE			
13,516.7	12,557.0	CORCORAN			
13,837.7	12,878.0	UPPER SEGO			
13,987.7	13,028.0	Formation 15			

Plan Annotations

Measured Depth (ft)	Vertical Depth (ft)	+N/-S (ft)	+E/-W (ft)	Comment
250.0	250.0	0.0	0.0	KOP @ 250'
1,214.7	1,174.2	167.0	-170.2	EOB @ Inc. = 289.94°
8,251.0	7,331.8	2,551.9	-2,600.3	Strat 3° Drop
9,215.6	8,256.0	2,718.9	-2,770.5	EOD @ Inc. = 0°
13,987.7	13,028.0	2,708.9	-2,787.5	TD @ 13,987.7' MD
14,104.7	13,145.0	2,708.6	-2,788.0	Permit TD @ 14,104.7' MD