



Well Name: **SRC GCC 12-11D**

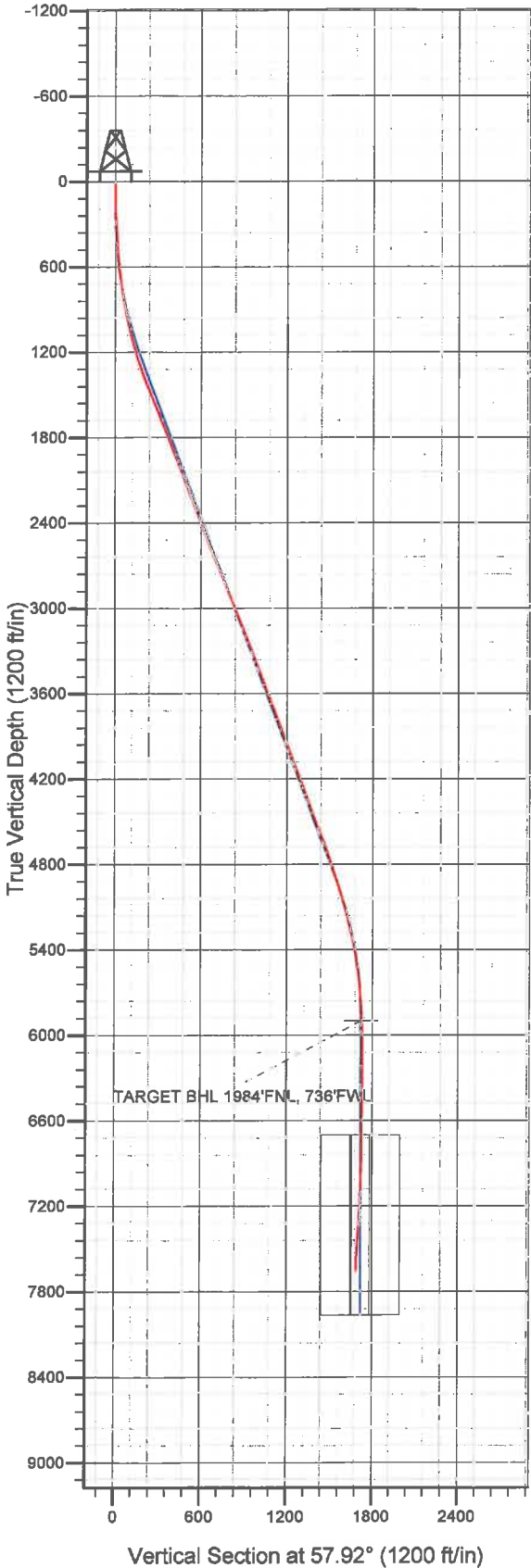
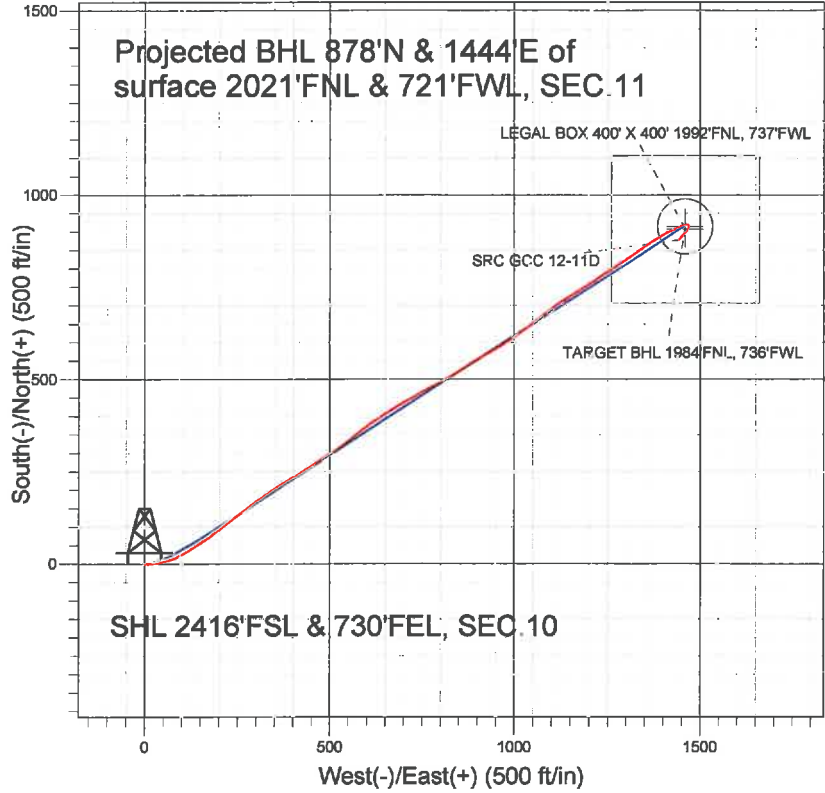
Surface Location: SRC Aims/GCC Pad Sec.10-T5N-R66W
 North American Datum 1983 US State Plane 1983 Colorado Northern Zone

Ground Elevation: 4858.0

+N/-S	+E/-W	Northing	Easting	Latitude	Longitude	Slot
0.0	0.0	1394347.99	3206357.80	40.413520	-104.758910	

Original Well Elev WELL @ 4871.0ft (Original Well Elev)

Synergy Resources



Final Survey Plot

Projected Final Survey -
 7958'MD & 7664'TVD @ 1690'VS
 2.2 deg Inc 221.6 deg AZ

Project: SEC.10-T5N-R66W
 Site: SRC Aims/GCC Pad Sec.10-T5N-R66W
 Well: SRC GCC 12-11D
 Plan: Wellbore #1



Directional

Synergy Resources

SEC.10-T5N-R66W

SRC Aims/GCC Pad Sec.10-T5N-R66W

SRC GCC 12-11D

Wellbore #1

Survey: Survey #1

Standard Survey Report

02 May, 2012

ENSIGN

Directional

Survey Report

Company:	Synergy Resources	Local Co-ordinate Reference:	Well SRC GCC 12-11D
Project:	SEC.10-T5N-R66W	TVD Reference:	WELL @ 4871.0ft (Original Well Elev)
Site:	SRC Aims/GCC Pad Sec.10-T5N-R66W	MD Reference:	WELL @ 4871.0ft (Original Well Elev)
Well:	SRC GCC 12-11D	North Reference:	True
Wellbore:	Wellbore #1	Survey Calculation Method:	Minimum Curvature
Design:	Wellbore #1	Database:	Landmark

Project	SEC.10-T5N-R66W, Weld County, Colorado		
Map System:	US State Plane 1983	System Datum:	Mean Sea Level
Geo Datum:	North American Datum 1983		Using Well Reference Point
Map Zone:	Colorado Northern Zone		Using geodetic scale factor

Site	SRC Aims/GCC Pad Sec.10-T5N-R66W				
Site Position:		Northing:	1,394,413.34ft	Latitude:	40.413700
From:	Lat/Long	Easting:	3,206,329.28ft	Longitude:	-104.759010
Position Uncertainty:	0.0 ft	Slot Radius:	"	Grid Convergence:	0.48 °

Well	SRC GCC 12-11D					
Well Position	+N/-S	0.0 ft	Northing:	1,394,347.99 ft	Latitude:	40.413520
	+E/-W	0.0 ft	Easting:	3,206,357.80 ft	Longitude:	-104.758910
Position Uncertainty		0.0 ft	Wellhead Elevation:	ft	Ground Level:	4,858.0 ft

Wellbore	Wellbore #1				
Magnetics	Model Name	Sample Date	Declination (°)	Dip Angle (°)	Field Strength (nT)
	IGRF2010	4/23/2012	8.75	67.03	53,049

Design	Wellbore #1				
Audit Notes:					
Version:	1.0	Phase:	ACTUAL	Tie On Depth:	0.0
Vertical Section:	Depth From (TVD) (ft)	+N/-S (ft)	+E/-W (ft)	Direction (°)	
	0.0	0.0	0.0	57.92	

Survey Program	Date 5/2/2012				
From (ft)	To (ft)	Survey (Wellbore)	Tool Name	Description	
81.0	7,958.0	Survey #1 (Wellbore #1)	MWD	MWD - Standard	

Survey										
Measured Depth (ft)	Inclination (°)	Azimuth (°)	Vertical Depth (ft)	+N/-S (ft)	+E/-W (ft)	Vertical Section (ft)	Dogleg Rate (°/100ft)	Build Rate (°/100ft)	Turn Rate (°/100ft)	
0.0	0.00	0.00	0.0	0.0	0.0	0.0	0.00	0.00	0.00	0.00
81.0	0.50	226.60	81.0	-0.2	-0.3	-0.3	0.62	0.62	0.00	0.00
172.0	1.20	95.80	172.0	-0.6	0.4	0.0	1.73	0.77	-143.74	-143.74
261.0	2.40	80.30	260.9	-0.4	3.2	2.5	1.44	1.35	-17.42	-17.42
356.0	3.60	90.00	355.8	-0.1	8.1	6.8	1.37	1.26	10.21	10.21
448.0	4.70	92.30	447.6	-0.2	14.8	12.4	1.21	1.20	2.50	2.50
539.0	6.40	88.60	538.1	-0.2	23.6	19.8	1.91	1.87	-4.07	-4.07
631.0	7.60	75.40	629.5	1.4	34.6	30.1	2.17	1.30	-14.35	-14.35
726.0	8.40	75.20	723.5	4.8	47.4	42.7	0.84	0.84	-0.21	-0.21
785.0	9.10	74.20	781.9	7.2	56.0	51.3	1.21	1.19	-1.69	-1.69
879.0	10.20	73.10	874.5	11.6	71.1	66.4	1.19	1.17	-1.17	-1.17
973.0	10.90	63.40	966.9	18.0	87.0	83.3	2.03	0.74	-10.32	-10.32
1,066.0	13.30	59.20	1,057.9	27.4	104.1	102.8	2.75	2.58	-4.52	-4.52

Company:	Synergy Resources	Local Co-ordinate Reference:	Well SRC GCC 12-11D
Project:	SEC.10-T5N-R66W	TVD Reference:	WELL @ 4871.0ft (Original Well Elev)
Site:	SRC Aims/GCC Pad Sec.10-T5N-R66W	MD Reference:	WELL @ 4871.0ft (Original Well Elev)
Well:	SRC GCC 12-11D	North Reference:	True
Wellbore:	Wellbore #1	Survey Calculation Method:	Minimum Curvature
Design:	Wellbore #1	Database:	Landmark

Survey										
Measured Depth (ft)	Inclination (°)	Azimuth (°)	Vertical Depth (ft)	+N/-S (ft)	+E/-W (ft)	Vertical Section (ft)	Dogleg Rate (°/100ft)	Build Rate (°/100ft)	Turn Rate (°/100ft)	
1,160.0	15.50	56.70	1,148.9	39.8	123.9	126.1	2.43	2.34	-2.66	
1,254.0	17.60	57.80	1,239.0	54.3	146.4	152.9	2.26	2.23	1.17	
1,347.0	19.80	54.10	1,327.1	71.0	171.1	182.7	2.69	2.37	-3.98	
1,441.0	22.00	50.90	1,414.9	91.5	197.6	216.1	2.64	2.34	-3.40	
1,535.0	22.20	53.10	1,502.0	113.3	225.5	251.2	0.91	0.21	2.34	
1,629.0	22.00	53.10	1,589.1	134.5	253.8	286.5	0.21	-0.21	0.00	
1,722.0	21.80	52.50	1,675.4	155.5	281.4	321.0	0.32	-0.22	-0.65	
1,816.0	21.80	55.20	1,762.7	176.0	309.6	355.8	1.07	0.00	2.87	
1,910.0	21.20	54.60	1,850.1	195.9	337.8	390.2	0.68	-0.64	-0.64	
2,003.0	20.80	59.40	1,937.0	214.0	365.7	423.5	1.90	-0.43	5.16	
2,097.0	20.80	61.00	2,024.8	230.6	394.7	456.9	0.60	0.00	1.70	
2,191.0	20.60	58.20	2,112.8	247.4	423.3	490.1	1.07	-0.21	-2.98	
2,285.0	20.70	57.30	2,200.7	265.1	451.4	523.2	0.35	0.11	-0.96	
2,378.0	21.40	56.70	2,287.5	283.3	479.4	556.6	0.79	0.75	-0.65	
2,472.0	20.00	58.20	2,375.4	301.2	507.4	589.8	1.59	-1.49	1.60	
2,565.0	20.10	53.20	2,462.8	319.1	533.7	621.7	1.85	0.11	-5.38	
2,659.0	21.90	51.70	2,550.6	339.7	560.4	655.2	2.00	1.91	-1.60	
2,753.0	20.75	51.70	2,638.1	360.9	587.2	689.2	1.22	-1.22	0.00	
2,847.0	21.90	55.00	2,725.7	381.2	614.6	723.3	1.77	1.22	3.51	
2,940.0	22.00	57.10	2,812.0	400.6	643.5	758.0	0.85	0.11	2.26	
3,034.0	23.10	58.30	2,898.8	419.9	673.9	794.0	1.27	1.17	1.28	
3,128.0	21.20	60.30	2,985.8	438.0	704.4	829.5	2.17	-2.02	2.13	
3,222.0	22.90	60.10	3,073.0	455.5	735.0	864.7	1.81	1.81	-0.21	
3,315.0	21.90	62.00	3,158.9	472.7	766.0	900.1	1.33	-1.08	2.04	
3,409.0	20.20	61.80	3,246.7	488.6	795.8	933.8	1.81	-1.81	-0.21	
3,503.0	21.20	59.20	3,334.6	505.0	824.7	967.0	1.44	1.06	-2.77	
3,597.0	20.00	55.20	3,422.6	522.9	852.5	1,000.0	1.97	-1.28	-4.26	
3,690.0	20.00	57.10	3,510.0	540.6	878.9	1,031.8	0.70	0.00	2.04	
3,784.0	20.60	61.50	3,598.1	557.2	906.9	1,064.4	1.74	0.64	4.68	
3,878.0	20.60	59.70	3,686.1	573.4	935.8	1,097.4	0.67	0.00	-1.91	
3,971.0	20.10	57.80	3,773.3	590.2	963.4	1,129.8	0.89	-0.54	-2.04	
4,065.0	20.10	56.00	3,861.6	607.8	990.5	1,162.1	0.66	0.00	-1.91	
4,159.0	20.50	54.10	3,949.8	626.5	1,017.2	1,194.6	0.82	0.43	-2.02	
4,252.0	20.90	52.50	4,036.8	646.2	1,043.5	1,227.4	0.74	0.43	-1.72	
4,346.0	20.40	52.90	4,124.7	666.3	1,069.9	1,260.4	0.55	-0.53	0.43	
4,440.0	20.50	50.80	4,212.8	686.5	1,095.7	1,293.0	0.79	0.11	-2.23	
4,534.0	20.90	55.70	4,300.7	706.4	1,122.3	1,326.1	1.89	0.43	5.21	
4,627.0	20.90	57.80	4,387.6	724.6	1,150.1	1,359.3	0.81	0.00	2.26	
4,721.0	21.00	58.00	4,475.4	742.4	1,178.6	1,392.9	0.13	0.11	0.21	
4,814.0	20.50	55.20	4,562.4	760.6	1,206.1	1,425.8	1.19	-0.54	-3.01	
4,908.0	20.10	55.20	4,650.5	779.2	1,232.8	1,458.4	0.43	-0.43	0.00	
5,002.0	19.30	58.30	4,739.0	796.6	1,259.3	1,490.1	1.40	-0.85	3.30	
5,096.0	18.30	56.90	4,828.0	812.8	1,284.9	1,520.4	1.17	-1.06	-1.49	
5,190.0	17.50	53.10	4,917.5	829.3	1,308.6	1,549.2	1.51	-0.85	-4.04	
5,283.0	17.20	55.00	5,006.2	845.6	1,331.0	1,576.9	0.69	-0.32	2.04	
5,377.0	16.40	57.80	5,096.2	860.7	1,353.6	1,604.0	1.21	-0.85	2.98	
5,471.0	14.00	57.60	5,186.9	873.8	1,374.5	1,628.7	2.55	-2.55	-0.21	
5,564.0	12.40	57.80	5,277.5	885.2	1,392.4	1,649.9	1.72	-1.72	0.22	
5,658.0	11.00	65.00	5,369.5	894.3	1,409.1	1,668.9	2.15	-1.49	7.66	
5,752.0	9.50	66.40	5,462.0	901.2	1,424.3	1,685.5	1.62	-1.60	1.49	
5,846.0	7.50	64.80	5,555.0	907.0	1,437.0	1,699.2	2.14	-2.13	-1.70	
5,940.0	6.20	65.40	5,648.3	911.7	1,447.1	1,710.4	1.39	-1.38	0.64	
6,033.0	4.70	64.80	5,740.9	915.4	1,455.2	1,719.1	1.61	-1.61	-0.65	
6,127.0	3.00	80.30	5,834.7	917.5	1,461.1	1,725.2	2.10	-1.81	16.49	

Company:	Synergy Resources	Local Co-ordinate Reference:	Well SRC GCC 12-11D
Project:	SEC 10-T5N-R66W	TVD Reference:	WELL @ 4871.0ft (Original Well Elev)
Site:	SRC Aims/GCC Pad Sec. 10-T5N-R66W	MD Reference:	WELL @ 4871.0ft (Original Well Elev)
Well:	SRC GCC 12-11D	North Reference:	True
Wellbore:	Wellbore #1	Survey Calculation Method:	Minimum Curvature
Design:	Wellbore #1	Database:	Landmark

Measured Depth (ft)	Inclination (°)	Azimuth (°)	Vertical Depth (ft)	+N/-S (ft)	+E/-W (ft)	Vertical Section (ft)	Dogleg Rate (°/100ft)	Build Rate (°/100ft)	Turn Rate (°/100ft)	
6,192.2	2.48	93.45	5,899.8	917.7	1,464.1	1,728.0	1.25	-0.80	20.19	
TARGET BHL 1984'FNL, 736'FWL										
6,221.0	2.30	101.00	5,928.6	917.5	1,465.3	1,728.9	1.25	-0.61	26.17	
6,315.0	1.00	134.40	6,022.5	916.6	1,467.8	1,730.5	1.67	-1.38	35.53	
6,408.0	1.00	127.80	6,115.5	915.5	1,469.0	1,730.9	0.12	0.00	-7.10	
6,502.0	0.70	134.80	6,209.5	914.6	1,470.1	1,731.3	0.34	-0.32	7.45	
6,596.0	0.60	156.80	6,303.5	913.7	1,470.7	1,731.4	0.28	-0.11	23.40	
6,690.0	0.30	161.90	6,397.5	913.1	1,470.9	1,731.3	0.32	-0.32	5.43	
6,783.0	0.40	226.20	6,490.5	912.6	1,470.8	1,730.9	0.41	0.11	69.14	
6,877.0	0.60	218.50	6,584.5	912.0	1,470.2	1,730.1	0.22	0.21	-8.19	
6,971.0	1.00	204.60	6,678.5	910.9	1,469.6	1,728.9	0.47	0.43	-14.79	
6,992.5	1.02	204.99	6,700.0	910.5	1,469.4	1,728.6	0.11	0.11	1.83	
TARGET CIRCLE 1984'FNL & 736'FWL										
6,992.6	1.02	205.00	6,700.1	910.5	1,469.4	1,728.6	0.11	0.11	1.79	
LEGAL BOX 400' X 400' 1992'FNL, 737'FWL										
7,065.0	1.10	206.20	6,772.5	909.3	1,468.8	1,727.5	0.11	0.11	1.66	
7,158.0	1.40	213.90	6,865.5	907.6	1,467.8	1,725.7	0.37	0.32	8.28	
7,252.0	1.80	209.50	6,959.4	905.3	1,466.4	1,723.3	0.44	0.43	-4.68	
7,346.0	2.00	212.70	7,053.4	902.7	1,464.8	1,720.6	0.24	0.21	3.40	
7,439.0	2.40	212.10	7,146.3	899.6	1,462.9	1,717.3	0.43	0.43	-0.65	
7,533.0	3.10	217.20	7,240.2	895.9	1,460.3	1,713.2	0.79	0.74	5.43	
7,627.0	3.60	222.70	7,334.0	891.8	1,456.8	1,708.0	0.63	0.53	5.85	
7,721.0	4.40	223.40	7,427.8	887.0	1,452.3	1,701.6	0.85	0.85	0.74	
7,815.0	3.30	222.90	7,521.6	882.4	1,448.0	1,695.5	1.17	-1.17	-0.53	
7,908.0	2.20	221.60	7,614.5	879.1	1,445.0	1,691.2	1.18	-1.18	-1.40	
7,958.0	2.20	221.60	7,664.4	877.6	1,443.7	1,689.4	0.00	0.00	0.00	

Checked By: _____ Approved By: _____ Date: _____

Header Information		measured depth (ft)	inclination (°)	azimuth (°)	true vertical depth (ft)	northing +N/-S (ft)	easting +E/-W (ft)
Operator Name	Synergy	0	0.00	0.00	0.00	0.00	0.00
Operator Number	10311	81	0.50	226.60	81.00	-0.24	-0.26
Well Name and Number		172	1.20	95.80	171.99	-0.61	0.40
SRC GCC 12-11D		261	2.40	80.30	260.95	-0.39	3.17
API Number (if available)		356	3.60	90.00	355.82	-0.06	8.11
05-123-34543		448	4.70	92.30	447.57	-0.21	14.76
Location: QQ SEC TWP RGE		539	6.40	88.60	538.14	-0.23	23.56
Sec.10-T5N-R66W		631	7.60	75.40	629.46	1.43	34.58
Citing Type: Planned or Actual		726	8.40	75.20	723.54	4.78	47.36
Actual		785	9.10	74.20	781.85	7.15	56.02
Deviation Indicator		879	10.20	73.10	874.52	11.60	71.14
Directional		973	10.90	63.40	966.94	18.00	87.05
North Reference		1066	13.30	59.20	1057.87	27.41	104.10
True		1160	15.50	56.70	1148.91	39.85	123.89
Grid Type		1254	17.60	57.80	1239.01	54.32	146.42
		1347	19.80	54.10	1327.10	71.05	171.08
		1441	22.00	50.90	1414.91	91.49	197.64
		1535	22.20	53.10	1502.01	113.26	225.51
		1629	22.00	53.10	1589.10	134.49	253.79
		1722	21.80	52.50	1675.39	155.46	281.42
		1816	21.80	55.20	1762.67	176.05	309.60
		1910	21.20	54.60	1850.13	195.86	337.78
		2003	20.80	59.40	1936.96	214.00	365.71
		2097	20.80	61.00	2024.83	230.59	394.67
		2191	20.60	58.20	2112.76	247.40	423.32
		2285	20.70	57.30	2200.72	265.09	451.36
		2378	21.40	56.70	2287.52	283.28	479.37
		2472	20.00	58.20	2375.45	301.17	507.37
		2565	20.10	53.20	2462.82	319.12	533.68

