

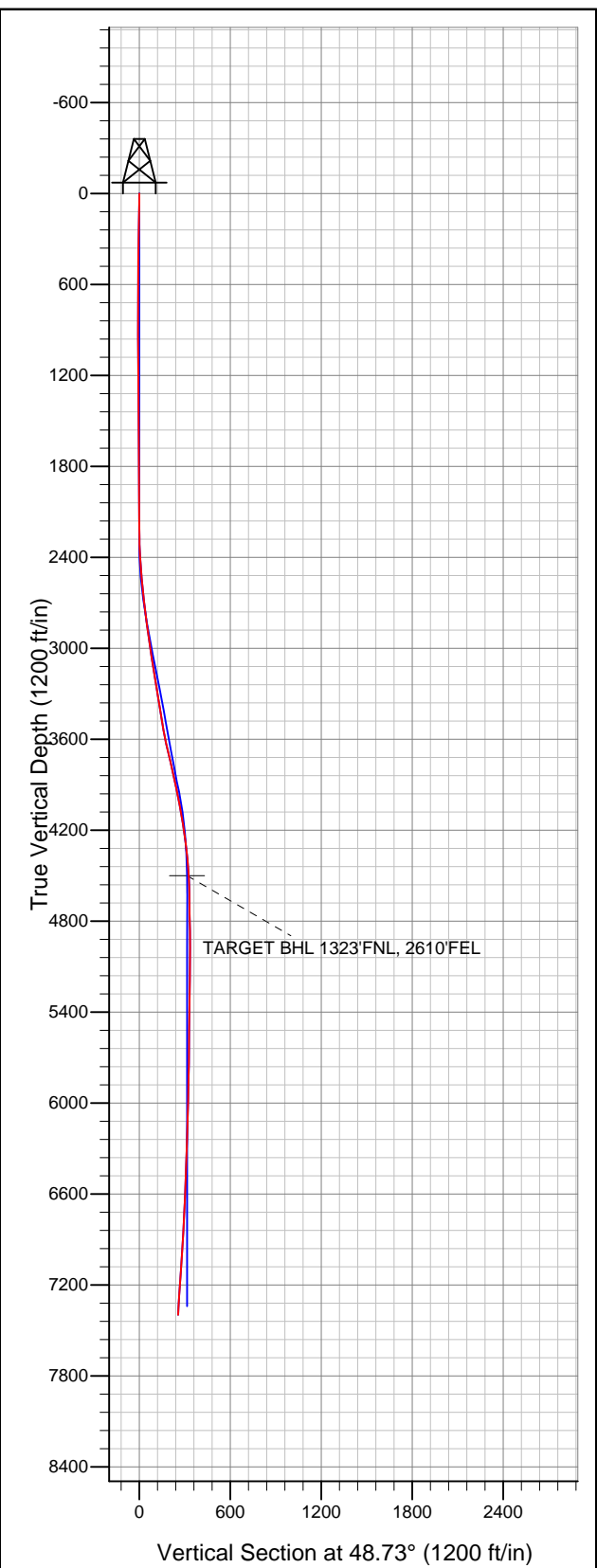


Well Name: 392 Ventures 22ND

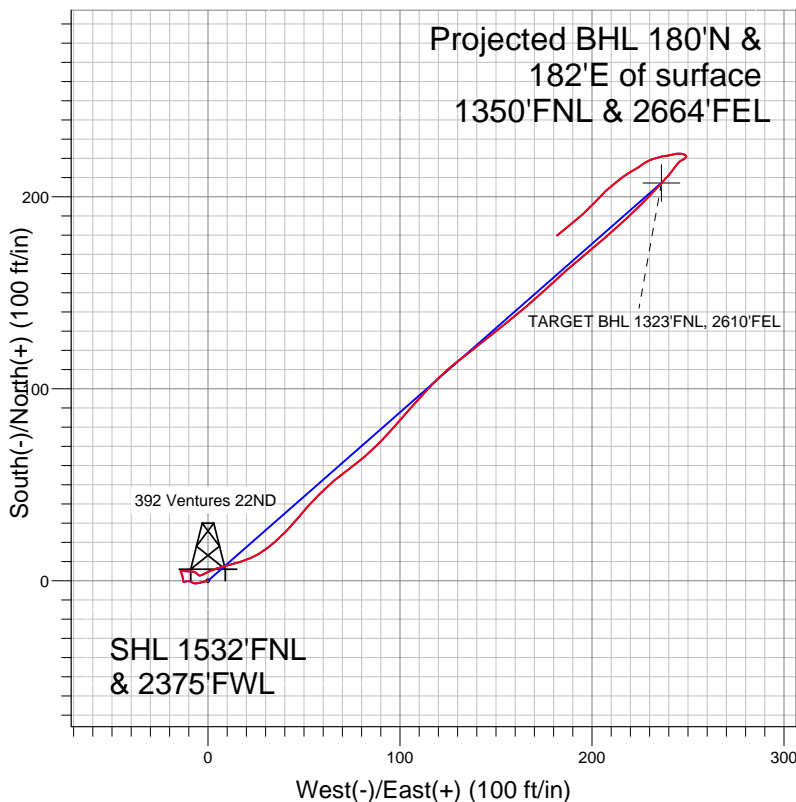
Surface Location: 392 Ventures Pad Sec.22-T6N-R67W
 North American Datum 1983 US State Plane 1983 Colorado Northern Zone
 Ground Elevation: 4783.0

+N/-S	+E/-W	Northing	Easting	Latitude	Longitude	Slot
0.0	0.0	1416660.81	3172332.80	40.475483	-104.880539	

 Original Well Elev WELL @ 4799.0ft (Original Well Elev)



Peterson Energy Operating Inc.- Weld County, CO



LEGEND

- 392 Ventures 22ND, Wellbore #1, Plan #2 (12-1-11) R V0
- Wellbore #1
- Survey #1

Final Survey Plot

Projected Final Survey -
 7425'MD & 7396'TVD @ 255'VS
 2.9 deg Inc 230.7 deg AZ

Project: SEC.22-T6N-R67W
 Site: 392 Ventures Pad Sec.22-T6N-R67W
 Well: 392 Ventures 22ND
 Plan: Wellbore #1



Peterson Energy Operating Inc.- Weld County, CO

SEC.22-T6N-R67W

392 Ventures Pad Sec.22-T6N-R67W

392 Ventures 22ND

Wellbore #1

Survey: Survey #1

Standard Survey Report

12 December, 2011

Survey										
	Measured Depth (ft)	Inclination (°)	Azimuth (°)	Vertical Depth (ft)	+N/-S (ft)	+E/-W (ft)	Vertical Section (ft)	Dogleg Rate (°/100ft)	Build Rate (°/100ft)	Turn Rate (°/100ft)
Survey	0.0	0.00	0.00	0.0	0.0	0.0	0.0	0.00	0.00	0.00
	88.0	1.40	260.20	88.0	-0.2	-1.1	-0.9	1.59	1.59	0.00
	204.0	1.20	250.80	204.0	-0.8	-3.6	-3.3	0.25	-0.17	-8.10
	337.0	1.10	266.40	336.9	-1.4	-6.2	-5.6	0.25	-0.08	11.73
	421.0	0.90	291.70	420.9	-1.2	-7.6	-6.5	0.57	-0.24	30.12
	522.0	0.40	324.20	521.9	-0.6	-8.6	-6.8	0.60	-0.50	32.18
	647.0	1.00	279.00	646.9	-0.1	-9.9	-7.5	0.62	0.48	-36.16
	771.0	1.00	245.40	770.9	-0.3	-11.9	-9.2	0.47	0.00	-27.10
	896.0	0.60	1.10	895.9	-0.1	-12.9	-9.8	1.10	-0.32	92.56
	1,021.0	1.10	352.30	1,020.9	1.7	-13.1	-8.7	0.41	0.40	-7.04
	1,146.0	1.20	335.00	1,145.8	4.1	-13.8	-7.7	0.29	0.08	-13.84
	1,271.0	0.10	85.30	1,270.8	5.3	-14.2	-7.2	0.99	-0.88	88.24

Company:	Peterson Energy Operating Inc.- Weld County, CO	Local Co-ordinate Reference:	Well 392 Ventures 22ND
Project:	SEC.22-T6N-R67W	TVD Reference:	WELL @ 4799.0ft (Original Well Elev)
Site:	392 Ventures Pad Sec.22-T6N-R67W	MD Reference:	WELL @ 4799.0ft (Original Well Elev)
Well:	392 Ventures 22ND	North Reference:	True
Wellbore:	Wellbore #1	Survey Calculation Method:	Minimum Curvature
Design:	Wellbore #1	Database:	Landmark

Survey									
Measured Depth (ft)	Inclination (°)	Azimuth (°)	Vertical Depth (ft)	+N/-S (ft)	+E/-W (ft)	Vertical Section (ft)	Dogleg Rate (°/100ft)	Build Rate (°/100ft)	Turn Rate (°/100ft)
1,396.0	0.30	100.10	1,395.8	5.2	-13.8	-6.9	0.16	0.16	11.84
1,521.0	1.50	95.10	1,520.8	5.0	-11.8	-5.6	0.96	0.96	-4.00
1,646.0	0.90	84.80	1,645.8	5.0	-9.2	-3.7	0.51	-0.48	-8.24
1,771.0	0.80	112.20	1,770.8	4.7	-7.4	-2.5	0.33	-0.08	21.92
1,895.0	0.90	119.40	1,894.8	3.9	-5.8	-1.8	0.12	0.08	5.81
2,020.0	0.50	153.00	2,019.8	2.9	-4.7	-1.6	0.45	-0.32	26.88
2,145.0	0.50	57.30	2,144.7	2.8	-4.0	-1.2	0.59	0.00	-76.56
2,270.0	1.10	68.00	2,269.7	3.5	-2.4	0.5	0.49	0.48	8.56
2,395.0	3.10	64.80	2,394.6	5.4	1.8	4.9	1.60	1.60	-2.56
2,519.0	5.50	77.50	2,518.3	8.1	10.6	13.3	2.07	1.94	10.24
2,644.0	6.40	65.70	2,642.6	12.3	22.8	25.2	1.21	0.72	-9.44
2,769.0	7.50	48.40	2,766.7	20.6	35.2	40.0	1.88	0.88	-13.84
2,894.0	7.70	39.20	2,890.6	32.5	46.6	56.5	0.99	0.16	-7.36
3,019.0	8.70	44.70	3,014.3	45.7	58.6	74.1	1.02	0.80	4.40
3,143.0	9.50	54.10	3,136.8	58.3	73.5	93.7	1.36	0.65	7.58
3,268.0	8.20	45.00	3,260.3	70.7	88.1	112.9	1.53	-1.04	-7.28
3,393.0	10.20	40.50	3,383.7	85.4	101.6	132.7	1.70	1.60	-3.60
3,518.0	9.10	43.10	3,506.9	101.0	115.6	153.5	0.95	-0.88	2.08
3,643.0	12.30	52.00	3,629.7	116.5	132.8	176.6	2.87	2.56	7.12
3,767.0	13.80	51.50	3,750.5	133.8	154.8	204.6	1.21	1.21	-0.40
3,892.0	13.00	47.10	3,872.1	152.7	176.8	233.5	1.04	-0.64	-3.52
4,017.0	9.70	50.70	3,994.7	168.9	195.2	258.1	2.70	-2.64	2.88
4,142.0	9.80	48.50	4,117.9	182.6	211.3	279.3	0.31	0.08	-1.76
4,267.0	8.40	44.70	4,241.3	196.2	225.7	299.0	1.22	-1.12	-3.04
4,391.0	6.30	42.30	4,364.3	207.6	236.7	314.8	1.71	-1.69	-1.94
4,516.0	3.10	34.80	4,488.8	215.5	243.2	324.9	2.60	-2.56	-6.00
4,526.8	2.92	35.73	4,499.6	215.9	243.5	325.5	1.77	-1.71	8.63
TARGET BHL 1323'FNL, 2610'FEL									
4,641.0	1.10	64.70	4,613.7	218.8	246.2	329.4	1.77	-1.59	25.36
4,766.0	0.90	53.20	4,738.7	219.9	248.1	331.5	0.23	-0.16	-9.20
4,891.0	0.40	35.20	4,863.7	220.8	249.1	332.9	0.43	-0.40	-14.40
5,015.0	0.30	292.70	4,987.7	221.3	249.1	333.2	0.44	-0.08	-82.66
5,140.0	0.60	323.20	5,112.7	221.9	248.4	333.1	0.30	0.24	24.40
5,265.0	1.00	272.90	5,237.7	222.5	246.9	332.4	0.62	0.32	-40.24
5,390.0	1.40	262.10	5,362.7	222.4	244.3	330.3	0.37	0.32	-8.64
5,515.0	0.70	269.60	5,487.7	222.2	242.0	328.5	0.57	-0.56	6.00
5,639.0	0.70	242.80	5,611.6	221.8	240.6	327.1	0.26	0.00	-21.61
5,764.0	0.90	268.30	5,736.6	221.4	238.9	325.6	0.32	0.16	20.40
5,889.0	1.40	255.60	5,861.6	221.0	236.5	323.5	0.45	0.40	-10.16
6,014.0	1.40	256.60	5,986.6	220.3	233.5	320.8	0.02	0.00	0.80
6,139.0	1.60	247.90	6,111.5	219.3	230.4	317.8	0.24	0.16	-6.96
6,263.0	1.80	234.60	6,235.5	217.5	227.2	314.2	0.36	0.16	-10.73
6,388.0	1.70	237.00	6,360.4	215.3	224.1	310.5	0.10	-0.08	1.92
6,513.0	2.20	241.00	6,485.3	213.2	220.4	306.3	0.41	0.40	3.20
6,638.0	2.20	232.20	6,610.2	210.5	216.4	301.5	0.27	0.00	-7.04
6,763.0	2.80	232.10	6,735.1	207.2	212.1	296.1	0.48	0.48	-0.08
6,887.0	3.40	228.40	6,858.9	202.9	207.0	289.4	0.51	0.48	-2.98
7,012.0	3.90	219.30	6,983.7	197.1	201.5	281.5	0.61	0.40	-7.28
7,137.0	4.10	230.50	7,108.4	191.0	195.4	272.8	0.64	0.16	8.96
7,293.0	3.50	230.50	7,264.0	184.4	187.4	262.5	0.38	-0.38	0.00
7,379.0	2.90	230.70	7,349.9	181.4	183.7	257.7	0.70	-0.70	0.23
7,425.0	2.90	230.70	7,395.9	179.9	181.9	255.4	0.00	0.00	0.00

Company:	Peterson Energy Operating Inc.- Weld County, CO	Local Co-ordinate Reference:	Well 392 Ventures 22ND
Project:	SEC.22-T6N-R67W	TVD Reference:	WELL @ 4799.0ft (Original Well Elev)
Site:	392 Ventures Pad Sec.22-T6N-R67W	MD Reference:	WELL @ 4799.0ft (Original Well Elev)
Well:	392 Ventures 22ND	North Reference:	True
Wellbore:	Wellbore #1	Survey Calculation Method:	Minimum Curvature
Design:	Wellbore #1	Database:	Landmark

Checked By: _____	Approved By: _____	Date: _____
-------------------	--------------------	-------------