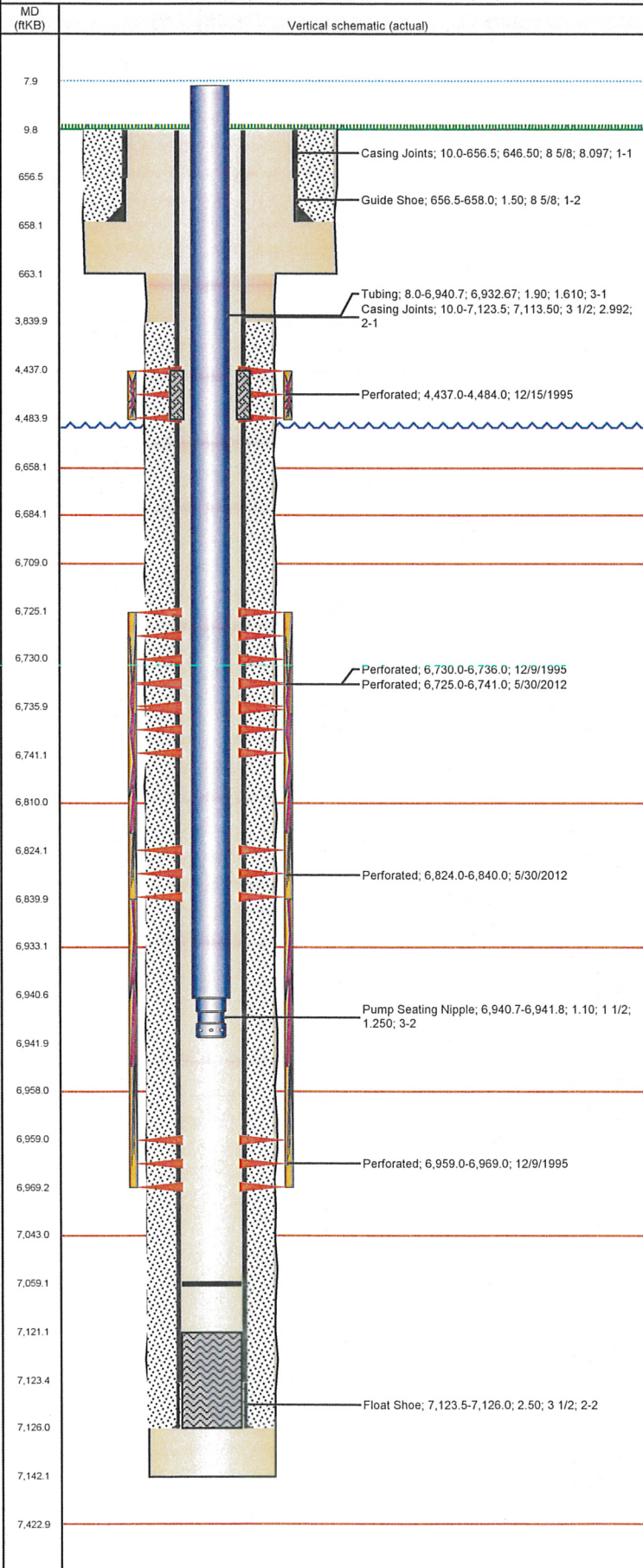


Well Name: ADAM RED D26-14

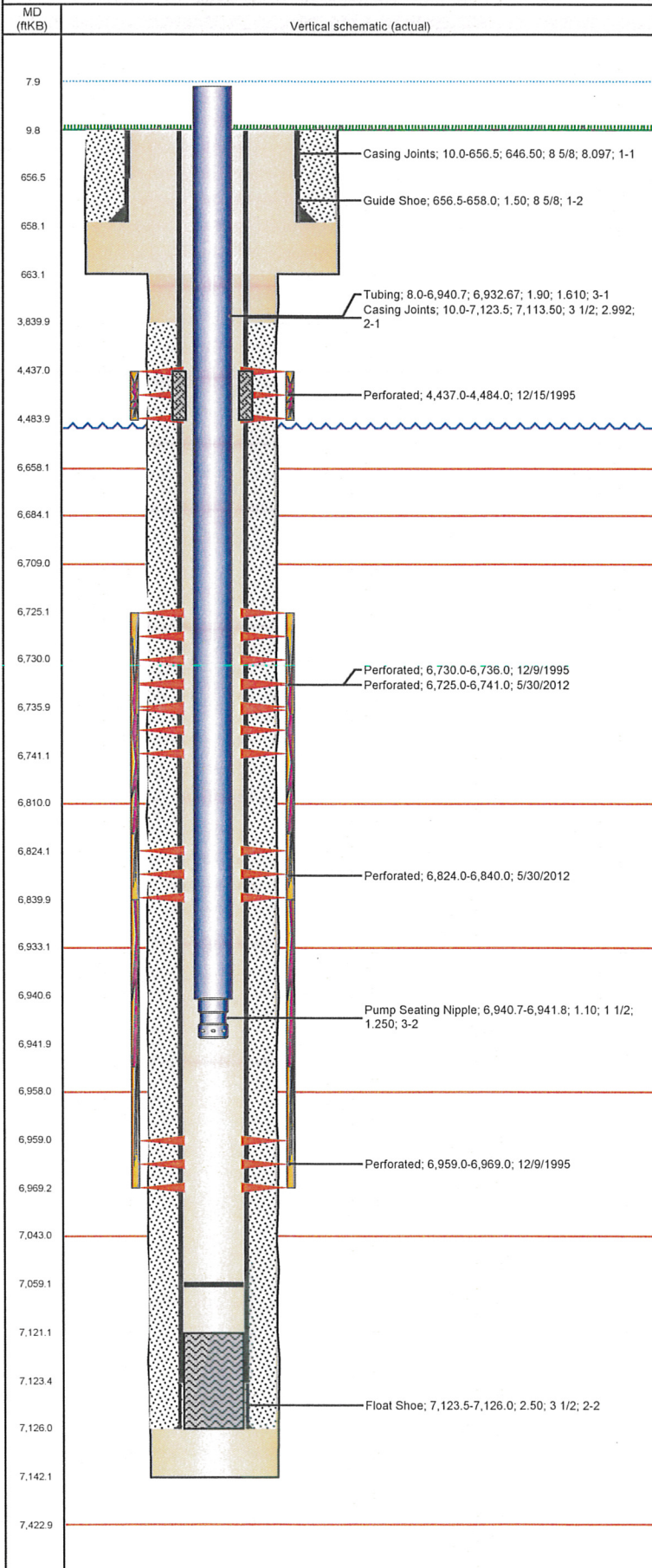
VERTICAL - ORIGINAL HOLE, 8/23/2012 9:26:00 AM



Well Header									
API 05-123-18974		Business Unit WATTENBERG		District 15		Well Config VERTICAL			
Original KB Elevation (ft) 4,877.00		KB - GL / MSL (ftKB) 10.00		Spud Date 11/13/1995		P & A Date			
Comment PACKER SLIP LEFT IN HOLE AT 7059'									
Directions To Well WCR 34 & WCR 53 (#1993) SOUTH 2.2, EAST 3 MILES, SOUTH 0.9, EAST 0.1, SOUTH INTO									
Current PBTD (ftKB) ORIGINAL HOLE - 7,059.0									
Surface Location (Congressional)									
Quarter 1	Quarter 2	Quarter 3	Quarter 4	Section	Township	Twnshp N...	Range	Rng E/W Dir	
		SE	SW	26	3 N		64	W	
Bottom Hole Location									
North-South Distance (ft)		From N or S Line		East-West Distance (ft)		From E or W Line			
Plug Back Total Depths									
Date	Depth (ftKB)	Method		Com					
11/15/1995	7,122.0	CASING TALLY		LATCH DOWN COLLAR					
11/20/1995	7,049.0	CASED HOLE LOG		DEPTH LOGGER					
Wellbore Sections									
Section Des		Size (in)		Act Top (ftKB)		Act Btm (ftKB)			
SURFACE		12 1/4		10.0		663.0			
PRODUCTION		6 1/4		663.0		7,142.0			
Zone Statuses									
Zone Name	Status Date	Status	Job						
SUSSEX	12/29/1995	PR	DRILLING/COMPLETION - ORIGINAL, 11/13/1995 00:00						
SUSSEX	5/23/2012	AB	RE-FRAC, 5/21/2012 06:00						
CODELL	12/29/1995	PR	DRILLING/COMPLETION - ORIGINAL, 11/13/1995 00:00						
CODELL	5/30/2012	SI	RE-FRAC, 5/21/2012 06:00						
CODELL	6/19/2012	PR	RE-FRAC, 5/21/2012 06:00						
NIOBRARA	12/29/1995	PR	DRILLING/COMPLETION - ORIGINAL, 11/13/1995 00:00						
NIOBRARA	6/19/2012	PR	RE-FRAC, 5/21/2012 06:00						
Casing Strings									
Csg Des	Run Date	OD (in)	Wt/Len (lb/ft)	Grade	Top (ftKB)	Set Depth (ftKB)			
Surface	11/13/1995	8 5/8	24.00		10.0	658.0			
Production	11/15/1995	3 1/2	9.30		10.0	7,126.0			
Cement									
Des		Top (ftKB)		Btm (ftKB)					
SURFACE CASING CEMENT		10.0		658.0					
PRODUCTION CASING CEMENT		3,840.0		7,126.0					
Cement Squeeze		4,437.0		4,484.0					
Tubing Components									
Item Des		OD (in)	Wt (lb/ft)	Grade	Jts	Len (ft)			
Tubing		1.9	2.75	J-55	211	6,932.67			
Pump Seating Nipple		1 1/2	2.75	J-55	1	1.10			
Perforation Data									
Zone	Bnch/Stg	Entered Shot Total	Top (ftKB)	Btm (ftKB)	Date				
SUSSEX, ORIGINAL HOLE		47	4,437.0	4,484.0	12/15/1995				
NIOBRARA, ORIGINAL HOLE	A	32	6,725.0	6,741.0	5/30/2012				
NIOBRARA, ORIGINAL HOLE	B	5	6,730.0	6,736.0	12/9/1995				
NIOBRARA, ORIGINAL HOLE	B	32	6,824.0	6,840.0	5/30/2012				
CODELL, ORIGINAL HOLE		11	6,959.0	6,969.0	12/9/1995				
Stimulations & Treatments									
Bnch/Stg	Date	Zone	Primary Job Type						
	12/11/1995	NIOBRARA-CODELL, ORIGINAL HOLE	DRILLING/COMPLETION - ORIGINAL						
Comment C/N LIMITED ENTRY									
Total Add Amount Proppant Bulk Sand 250800 lb			Total Clean Volume...		Vol Slurry Tot (gal) 68712.00		Vol Gas Tot (MCF)		
Avg Treat Pressure (psi) 5,800.0		Max Treat Pressure (psi) 6,000.0		Avg Treat Rate (bbl/min) 25.00		Max Treat Rate (bbl/min) 26.50			

Well Name: ADAM RED D26-14

VERTICAL - ORIGINAL HOLE, 8/23/2012 9:26:00 AM



Stimulations & Treatments

Bnch/Stg	Date	Zone	Primary Job Type
	12/18/1995	SUSSEX, ORIGINAL HOLE	DRILLING/COMPLETION - ORIGINAL

Comment

Total Add Amount	Total Clean Volume...	Vol Slurry Tot (gal)	Vol Gas Tot (MCF)
Proppant Bulk Sand 215780 lb; Proppant CR-5000 20260 lb		73206.00	

Avg Treat Pressure (psi)	Max Treat Pressure (psi)	Avg Treat Rate (bbl/min)	Max Treat Rate (bbl/min)
3,500.0	4,600.0	32.00	33.00

Bnch/Stg	Date	Zone	Primary Job Type
	6/8/2012	NIOBRARA, ORIGINAL HOLE	RE-FRAC

Comment

Total Add Amount	Total Clean Volume...	Vol Slurry Tot (gal)	Vol Gas Tot (MCF)
Proppant Ottawa 255675 lb	152877.48	164476.62	

Avg Treat Pressure (psi)	Max Treat Pressure (psi)	Avg Treat Rate (bbl/min)	Max Treat Rate (bbl/min)
7,344.0	7,919.0	17.80	18.80

Other In Hole

Run Date	Des	OD (in)	Top (ftKB)	Btm (ftKB)

Logs

Date	Type	Top (ftKB)	Btm (ftKB)
11/14/1995	COMPENSATED DENSITY	3,900.0	7,150.0
11/14/1995	INDUCTION	3,900.0	7,150.0
11/20/1995	CEMENT BOND	3,600.0	7,042.0