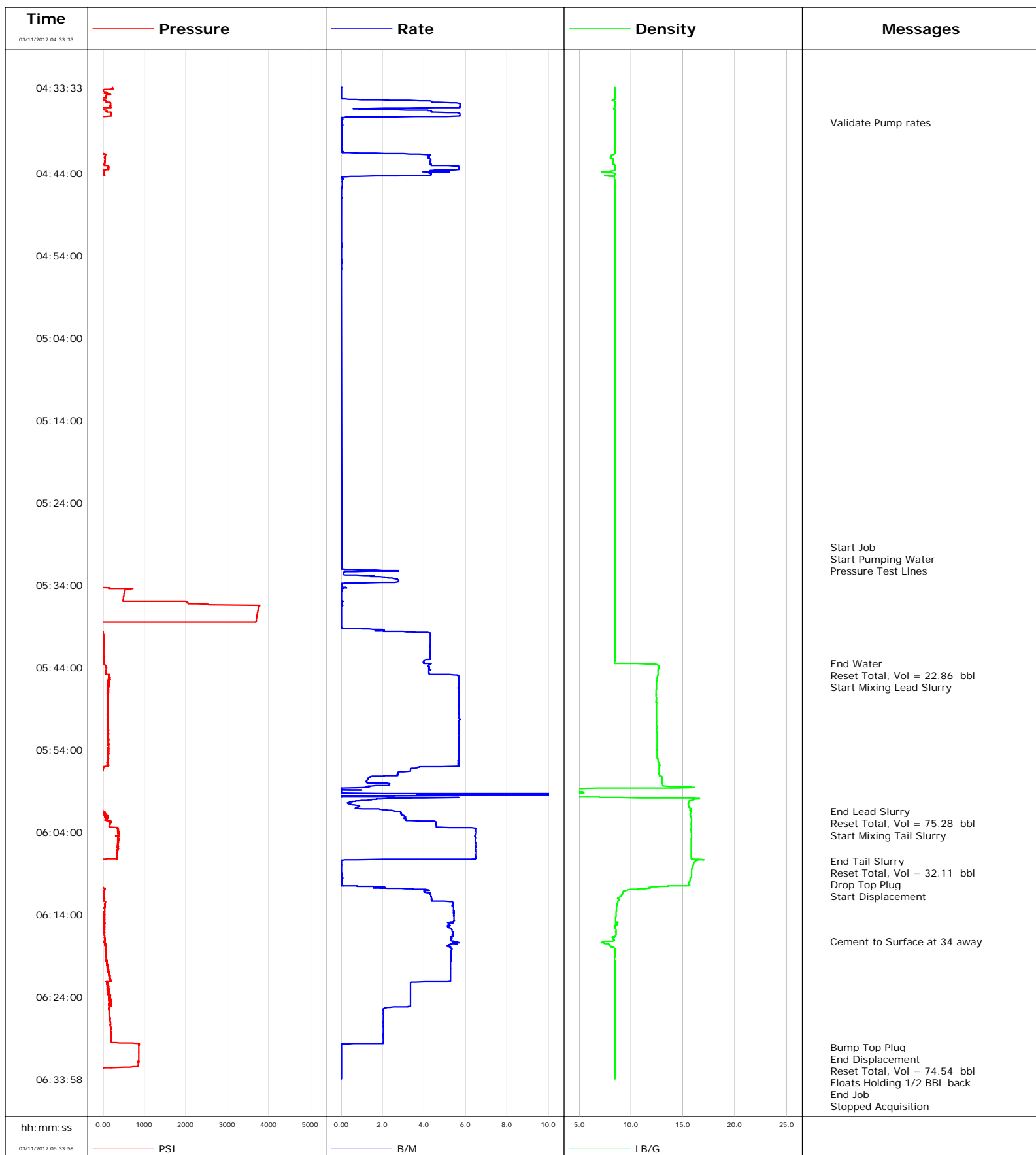


Well Cook Martin 20-1D
Field Mamm Creek
Engineer Tony Fowler
Country United States

Client Encana
SIR No. COBA-00269
Job Type 9 5/8 Surface
Job Date 03-11-2012





Cementing Service Report

				Customer Encana		Job Number COBA-00269	
Well Cook Martin 20-1D			Location (legal)		Schlumberger Location Rock Springs WY		Job Start Mar/11/2012
Field Mamm Creek		Formation Name/Type Dirty-Sandstone		Deviation	Bit Size	Well MD 1026.0 ft	Well TVD
County		State/Province Colorado		BHP	BHST	BHCT	Pore Press. Gradient
Well Master		API /UWI					
Rig Name M-13		Drilled For Gas		Service Via Land		Casing/Liner	
				Depth, ft	Size, in	Weight, lb/ft	Grade
							Thread
Offshore Zone		Well Class New		Well Type Development			
				1026.0	9.630	36.0	K55
				0.0	0.000	0.0	8RD
Drilling Fluid Type		Max. Density		Plastic Viscosity		Tubing/Drill Pipe	
				Depth,	Size,	Weight,	Grade
							Thread
Service Line Cementing		Job Type 9 5/8 Surface					
Max. Allowed Tub. Press		Max. Allowed Ann. Press		WH Connection Single Cement head		Perforations/Open Hole	
				Top,	Bottom,	No. of Shots	Total Interval
							Diameter
				Treat Down	Displacement	Packer Type	Packer Depth
				Tubing Vol.	Casing Vol.	Annular Vol.	Openhole Vol.
Casing/Tubing Secured <input checked="" type="checkbox"/>		1 Hole Vol. Circulated prior to Cement <input checked="" type="checkbox"/>		Casing Tools		Squeeze Job	
Lift Pressure				Shoe Type		Squeeze Type	
Pipe Rotated <input type="checkbox"/>		Pipe Reciprocated <input type="checkbox"/>		Shoe Depth		Tool Type	
No. Centralizers		Top Plugs 1		Bottom Plugs		Stage Tool Type	
						Tool Depth	
Cement Head Type Single				Stage Tool Depth		Tail Pipe Size	
Job Scheduled For Mar/11/2012		Arrived on Location Mar/11/2012		Leave Location Mar/11/2012		Collar Type	
						Tail Pipe Depth	
						Sqz. Total Vol.	
Date	Time 24-hr clock	Treating Pressure PSI	Flow Rate B/M	Density LB/G	Volume BBL	Message	
03/11/2012	04:20:53					Started Acquisition	
03/11/2012	04:33:33	222	0.0	8.43	0.0		
03/11/2012	04:34:53	-42	0.0	8.44	0.0		
03/11/2012	04:36:53	205	5.7	8.44	8.3		
03/11/2012	04:37:47					Validate Pump rates	
03/11/2012	04:37:47	-55	0.0	8.44	9.8		
03/11/2012	04:38:53	-56	0.0	8.44	9.9		
03/11/2012	04:40:53	-88	0.0	8.44	9.9		
03/11/2012	04:42:53	37	4.3	8.30	15.5		
03/11/2012	04:44:53	-109	0.1	8.43	22.4		
03/11/2012	04:46:53	-110	0.0	8.43	22.5		
03/11/2012	04:48:53	-109	0.0	8.43	22.5		
03/11/2012	04:50:53	-108	0.0	8.43	22.5		
03/11/2012	04:52:53	-108	0.0	8.43	22.6		
03/11/2012	04:54:53	-108	0.0	8.43	22.6		
03/11/2012	05:29:21					Start Job	
03/11/2012	05:29:21	-107	0.0	8.44	22.6		
03/11/2012	05:29:24					Start Pumping Water	
03/11/2012	05:29:24	-108	0.0	8.44	22.6		
03/11/2012	05:29:26					Pressure Test Lines	
03/11/2012	05:29:26	-107	0.0	8.44	22.6		

Well			Field		Job Start	Customer	Job Number
Cook Martin 20-1D			Mamm Creek		Mar/11/2012	Encana	COBA-00269
Date	Time 24-hr clock	Treating Pressure PSI	Flow Rate B/M	Density LB/G	Volume BBL	Message	
03/11/2012	05:32:53	-76	1.6	8.44	23.2		
03/11/2012	05:34:53	515	0.0	8.43	25.4		
03/11/2012	05:36:53	3748	0.0	8.43	25.4		
03/11/2012	05:38:53	-98	0.0	8.43	25.4		
03/11/2012	05:40:53	9	4.3	8.43	31.3		
03/11/2012	05:42:53	19	4.3	8.43	39.9		
03/11/2012	05:43:34					End Water	
03/11/2012	05:43:34	17	4.3	10.49	42.6		
03/11/2012	05:43:37					Reset Total, Vol = 22.86 bbl	
03/11/2012	05:43:37	15	4.3	12.28	42.9		
03/11/2012	05:43:39					Start Mixing Lead Slurry	
03/11/2012	05:43:39	35	4.3	12.45	0.1		
03/11/2012	05:44:53	164	5.2	12.58	5.4		
03/11/2012	05:46:53	117	5.7	12.42	16.7		
03/11/2012	05:48:53	123	5.7	12.45	28.1		
03/11/2012	05:50:53	120	5.7	12.47	39.5		
03/11/2012	05:52:53	133	5.7	12.50	50.8		
03/11/2012	05:54:53	120	5.7	12.49	62.2		
03/11/2012	05:56:53	-34	2.7	12.70	71.6		
03/11/2012	05:58:53	-86	0.4	4.27	74.6		
03/11/2012	06:00:53	-32	0.9	15.56	79.2		
03/11/2012	06:01:30					End Lead Slurry	
03/11/2012	06:01:30	17	2.7	15.75	80.2		
03/11/2012	06:01:32					Reset Total, Vol = 75.28 bbl	
03/11/2012	06:01:32	43	2.7	15.74	80.3		
03/11/2012	06:01:33					Start Mixing Tail Slurry	
03/11/2012	06:01:33	43	2.8	15.74	0.0		
03/11/2012	06:02:53	179	4.6	15.80	4.4		
03/11/2012	06:04:53	373	6.5	15.80	16.3		
03/11/2012	06:06:53	354	6.5	15.79	29.3		
03/11/2012	06:07:29					End Tail Slurry	
03/11/2012	06:07:29	-92	0.0	16.21	32.1		
03/11/2012	06:07:31					Reset Total, Vol = 32.11 bbl	
03/11/2012	06:07:31	-94	0.0	16.18	32.1		
03/11/2012	06:08:18					Drop Top Plug	
03/11/2012	06:08:18	-98	0.0	15.87	0.0		
03/11/2012	06:08:19					Start Displacement	
03/11/2012	06:08:19	-98	0.0	15.87	0.0		
03/11/2012	06:08:53	-76	0.0	15.83	0.0		
03/11/2012	06:10:53	43	3.1	11.34	0.7		
03/11/2012	06:12:53	47	5.4	8.61	9.7		
03/11/2012	06:14:53	31	5.4	8.49	20.5		
03/11/2012	06:16:53	48	5.3	8.30	31.1		
03/11/2012	06:17:17					Cement to Surface at 34 away	
03/11/2012	06:17:17	38	5.4	7.45	33.3		
03/11/2012	06:18:53	71	5.3	8.44	41.8		
03/11/2012	06:20:53	124	5.3	8.43	52.3		
03/11/2012	06:22:53	134	3.4	8.43	61.5		
03/11/2012	06:24:53	143	3.3	8.43	68.2		
03/11/2012	06:26:53	168	2.0	8.43	72.8		
03/11/2012	06:28:53	194	2.0	8.43	76.9		
03/11/2012	06:30:05					Bump Top Plug	
03/11/2012	06:30:05					End Displacement	
03/11/2012	06:30:05	863	0.0	8.43	78.5		

Well Cook Martin 20-1D			Field Mamm Creek		Job Start Mar/11/2012		Customer Encana		Job Number COBA-00269	
Date	Time 24-hr clock	Treating Pressure PSI		Flow Rate B/M	Density LB/G		Volume BBL	Message		
03/11/2012	06:30:06	862		0.0	8.43		78.5			
03/11/2012	06:30:53	859		0.0	8.43		0.0			
03/11/2012	06:32:53	-108		0.0	8.43		0.0			
03/11/2012	06:33:15							Floats Holding 1/2 BBL back		
03/11/2012	06:33:15	-107		0.0	8.43		0.0			
03/11/2012	06:33:55							End Job		
03/11/2012	06:33:55	-106		0.0	8.43		0.0			

Post Job Summary

Average Pump Rates, bbl/min					Volume of Fluid Injected, bbl						
Slurry 2.0	N2	Mud 0.0	Maximum Rate 25.0		Total Slurry 107.0	Mud 0.0	Spacer 0.0	N2			
Treating Pressure Summary, psi					Breakdown Fluid						
Maximum 3776	Final -106	Average 328	Bump Plug to	Breakdown	Type		Volume		Density		
Avg. N2 Percent		Designed Slurry Volume		Displacement 74.0 bbl		Mix Water Temp		Cement Circulated to Surface?	<input checked="" type="checkbox"/>	Volume	
								Washed Thru Perfs		<input type="checkbox"/>	To
Customer or Authorized Representative				Schlumberger Supervisor Tony Fowler				Circulation Lost	<input type="checkbox"/>	Job Completed	<input checked="" type="checkbox"/>
								-		-	