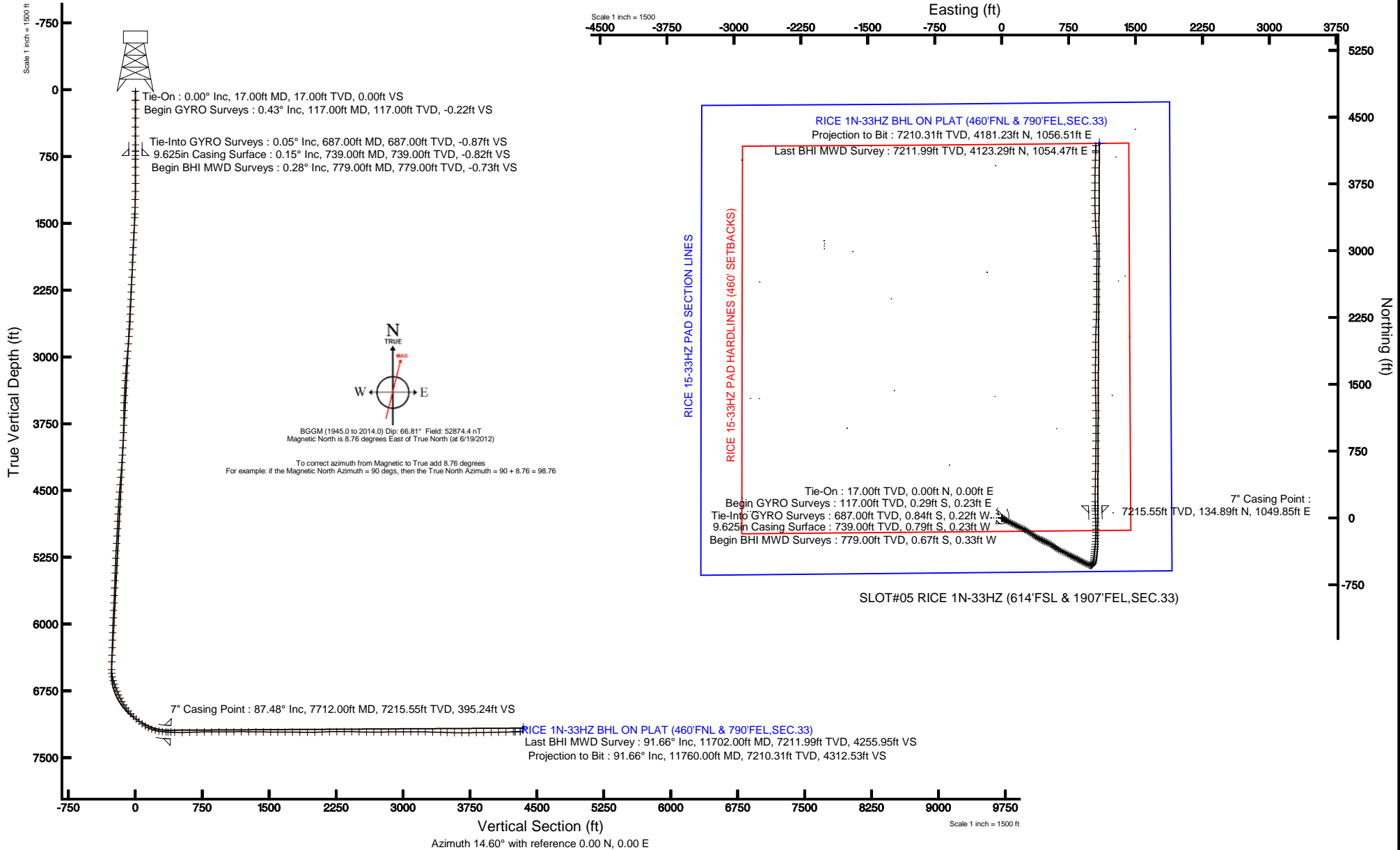


# KERR-MCGEE OIL & GAS ONSHORE LP

Location: COLORADO Slot: SLOT#05 RICE 1N-33HZ (614'FSL & 1907'FEL,SEC.33)  
 Field: WELD COUNTY (KERR MCGEE) Well: RICE 1N-33HZ  
 Facility: SEC.33-T3N-R66W Wellbore: RICE 1N-33HZ PWB

Plot reference wellpath is RICE 1N-33HZ (REV-A.0) PWP

True vertical depths are referenced to XTREME 8 (RKB)	Grid System: NAD83 / Lambert Colorado SP, Northern Zone (501), US feet
Measured depths are referenced to XTREME 8 (RKB)	North Reference: True north
XTREME 8 (RKB) to Mean Sea Level: 4958 feet	Scale: True distance
Mean Sea Level to Mud line (At Slot: SLOT#05 RICE 1N-33HZ (614'FSL & 1907'FEL,SEC.33)): 0 feet	Depths are in feet
Coordinates are in feet referenced to Slot	Created by: wilsje02 on 6/28/2012





# Actual Wellpath Report

RICE 1N-33HZ AWP

Page 1 of 7



REFERENCE WELLPATH IDENTIFICATION			
Operator	<b>KERR-MCGEE OIL &amp; GAS ONSHORE LP</b>	Slot	<b>SLOT#05 RICE 1N-33HZ (614'FSL &amp; 1907'FEL,SEC.33)</b>
Area	<b>COLORADO</b>	Well	<b>RICE 1N-33HZ</b>
Field	<b>WELD COUNTY (KERR MCGEE)</b>	Wellbore	<b>RICE 1N-33HZ AWB</b>
Facility	<b>SEC.33-T3N-R66W</b>		

REPORT SETUP INFORMATION			
Projection System	<b>NAD83 / Lambert Colorado SP, Northern Zone (501), US feet</b>	Software System	<b>WellArchitect® 3.0.2</b>
North Reference	<b>True</b>	User	<b>Wilsjef02</b>
Scale	<b>0.999958</b>	Report Generated	<b>6/28/2012 at 08:52:00</b>
Convergence at slot	<b>0.47° East</b>	Database/Source file	<b>WellArchitectDB/RICE_1N-33HZ_AWB.xml</b>

WELLPATH LOCATION						
	Local coordinates		Grid coordinates		Geographic coordinates	
	North[ft]	East[ft]	Easting[US ft]	Northing[US ft]	Latitude	Longitude
Slot Location	0.81	119.93	3201309.80	1307761.46	<b>40°10'33.442"N</b>	<b>104°46'46.430"W</b>
Facility Reference Pt			3201189.88	1307759.68	<b>40°10'33.434"N</b>	<b>104°46'47.975"W</b>
Field Reference Pt			<b>3197771.84</b>	<b>1268891.29</b>	40°04'09.600"N	104°47'36.000"W

WELLPATH DATUM			
Calculation method	<b>Minimum curvature</b>	XTREME 8 (RKB) to Facility Vertical Datum	<b>4958.00ft</b>
Horizontal Reference Pt	<b>Slot</b>	XTREME 8 (RKB) to Mean Sea Level	<b>4958.00ft</b>
Vertical Reference Pt	<b>XTREME 8 (RKB)</b>	XTREME 8 (RKB) to Mud Line at Slot (SLOT#05 RICE 1N-33HZ (614'FSL & 1907'FEL,SEC.33))	<b>4958.00ft</b>
MD Reference Pt	<b>XTREME 8 (RKB)</b>	Section Origin	<b>N 0.00, E 0.00 ft</b>
Field Vertical Reference	<b>Mean Sea Level</b>	Section Azimuth	<b>14.18°</b>



# Actual Wellpath Report

RICE 1N-33HZ AWP

Page 2 of 7



REFERENCE WELLPATH IDENTIFICATION				
Operator	KERR-MCGEE OIL & GAS ONSHORE LP		Slot	SLOT#05 RICE 1N-33HZ (614'FSL & 1907'FEL,SEC.33)
Area	COLORADO		Well	RICE 1N-33HZ
Field	WELD COUNTY (KERR MCGEE)		Wellbore	RICE 1N-33HZ AWB
Facility	SEC.33-T3N-R66W			

WELLPATH DATA (154 stations) † = interpolated/extrapolated station										
MD [ft]	Inclination [°]	Azimuth [°]	TVD [ft]	Vert Sect [ft]	North [ft]	East [ft]	Latitude	Longitude	DLS [°/100ft]	Comments
0.00†	0.000	141.240	0.00	0.00	0.00	0.00	40°10'33.442"N	104°46'46.430"W	0.00	
17.00	0.000	141.240	17.00	0.00	0.00	0.00	40°10'33.442"N	104°46'46.430"W	0.00	Tie-On
117.00	0.430	141.240	117.00	-0.23	-0.29	0.23	40°10'33.439"N	104°46'46.427"W	0.43	Begin GYRO Surveys
217.00	0.110	315.020	217.00	-0.40	-0.52	0.40	40°10'33.437"N	104°46'46.425"W	0.54	
317.00	0.320	176.090	317.00	-0.62	-0.73	0.35	40°10'33.435"N	104°46'46.425"W	0.41	
417.00	0.230	346.660	417.00	-0.71	-0.81	0.33	40°10'33.434"N	104°46'46.426"W	0.55	
517.00	0.110	248.000	517.00	-0.59	-0.65	0.19	40°10'33.436"N	104°46'46.428"W	0.27	
617.00	0.260	245.910	617.00	-0.78	-0.78	-0.11	40°10'33.434"N	104°46'46.431"W	0.15	
687.00	0.050	87.510	687.00	-0.87	-0.84	-0.22	40°10'33.434"N	104°46'46.433"W	0.44	Tie-Into GYRO Surveys
779.00	0.280	319.280	779.00	-0.73	-0.67	-0.33	40°10'33.435"N	104°46'46.434"W	0.34	Begin BHI MWD Surveys
869.00	0.420	20.550	868.99	-0.28	-0.20	-0.35	40°10'33.440"N	104°46'46.435"W	0.42	
960.00	0.330	27.380	959.99	0.31	0.35	-0.12	40°10'33.445"N	104°46'46.432"W	0.11	
1050.00	2.830	116.430	1049.96	0.09	-0.41	1.99	40°10'33.438"N	104°46'46.404"W	3.16	
1141.00	4.760	109.940	1140.75	-0.77	-2.70	7.55	40°10'33.415"N	104°46'46.333"W	2.17	
1232.00	6.110	118.280	1231.34	-2.32	-6.28	15.37	40°10'33.380"N	104°46'46.232"W	1.72	
1323.00	6.670	125.630	1321.78	-5.44	-11.65	23.93	40°10'33.327"N	104°46'46.122"W	1.09	
1396.00	7.940	123.510	1394.18	-8.66	-16.91	31.58	40°10'33.275"N	104°46'46.023"W	1.78	
1439.00	8.210	122.000	1436.76	-10.58	-20.17	36.66	40°10'33.243"N	104°46'45.958"W	0.80	
1524.00	10.250	117.890	1520.65	-14.23	-26.93	48.49	40°10'33.176"N	104°46'45.805"W	2.52	
1609.00	11.950	117.110	1604.06	-17.99	-34.48	63.01	40°10'33.101"N	104°46'45.618"W	2.01	
1694.00	11.630	120.890	1687.27	-22.42	-42.89	78.20	40°10'33.018"N	104°46'45.423"W	0.98	
1780.00	11.740	118.090	1771.49	-27.02	-51.46	93.35	40°10'32.934"N	104°46'45.227"W	0.67	
1865.00	12.250	116.490	1854.63	-31.02	-59.55	109.05	40°10'32.854"N	104°46'45.025"W	0.72	
1950.00	12.410	114.370	1937.67	-34.56	-67.34	125.44	40°10'32.777"N	104°46'44.814"W	0.56	
2036.00	11.920	114.760	2021.74	-37.82	-74.87	141.93	40°10'32.702"N	104°46'44.602"W	0.58	
2121.00	12.290	119.210	2104.85	-41.78	-82.96	157.79	40°10'32.622"N	104°46'44.397"W	1.18	
2206.00	11.470	116.270	2188.03	-45.90	-91.12	173.27	40°10'32.542"N	104°46'44.198"W	1.20	
2291.00	11.680	117.580	2271.30	-49.66	-98.84	188.47	40°10'32.465"N	104°46'44.002"W	0.40	
2377.00	12.610	112.020	2355.38	-52.96	-106.40	204.89	40°10'32.391"N	104°46'43.790"W	1.74	
2462.00	13.150	117.100	2438.24	-56.39	-114.28	222.10	40°10'32.313"N	104°46'43.569"W	1.48	
2547.00	13.290	113.980	2520.99	-60.21	-122.65	239.64	40°10'32.230"N	104°46'43.343"W	0.86	
2632.00	12.360	117.910	2603.87	-64.03	-130.88	256.60	40°10'32.149"N	104°46'43.124"W	1.50	
2718.00	12.230	121.110	2687.90	-68.87	-139.90	272.54	40°10'32.060"N	104°46'42.919"W	0.81	
2803.00	13.210	123.040	2770.81	-74.63	-149.85	288.39	40°10'31.961"N	104°46'42.715"W	1.26	
2888.00	15.470	125.610	2853.16	-81.91	-161.74	305.75	40°10'31.844"N	104°46'42.491"W	2.76	
2974.00	15.800	125.080	2935.98	-90.28	-175.15	324.65	40°10'31.711"N	104°46'42.248"W	0.42	
3059.00	15.510	124.350	3017.83	-98.33	-188.21	343.51	40°10'31.582"N	104°46'42.005"W	0.41	
3144.00	14.970	125.030	3099.84	-106.15	-200.93	361.88	40°10'31.456"N	104°46'41.768"W	0.67	
3230.00	13.970	121.050	3183.11	-113.12	-212.66	379.87	40°10'31.340"N	104°46'41.536"W	1.64	
3315.00	13.740	119.940	3265.64	-118.84	-222.99	397.41	40°10'31.238"N	104°46'41.310"W	0.41	
3400.00	12.590	118.200	3348.40	-123.82	-232.40	414.32	40°10'31.145"N	104°46'41.092"W	1.43	
3486.00	10.870	117.320	3432.60	-127.94	-240.56	429.78	40°10'31.065"N	104°46'40.893"W	2.01	
3571.00	10.000	115.240	3516.20	-131.18	-247.38	443.58	40°10'30.997"N	104°46'40.716"W	1.12	
3656.00	9.670	111.360	3599.95	-133.48	-253.13	456.90	40°10'30.941"N	104°46'40.544"W	0.87	
3741.00	9.420	113.480	3683.77	-135.50	-258.50	469.93	40°10'30.887"N	104°46'40.376"W	0.51	



# Actual Wellpath Report

RICE 1N-33HZ AWP

Page 3 of 7



REFERENCE WELLPATH IDENTIFICATION				
Operator	KERR-MCGEE OIL & GAS ONSHORE LP		Slot	SLOT#05 RICE 1N-33HZ (614'FSL & 1907'FEL,SEC.33)
Area	COLORADO		Well	RICE 1N-33HZ
Field	WELD COUNTY (KERR MCGEE)		Wellbore	RICE 1N-33HZ AWB
Facility	SEC.33-T3N-R66W			

WELLPATH DATA (154 stations)										
MD [ft]	Inclination [°]	Azimuth [°]	TVD [ft]	Vert Sect [ft]	North [ft]	East [ft]	Latitude	Longitude	DLS [°/100ft]	Comments
3827.00	9.710	114.480	3768.57	-137.93	-264.31	482.99	40°10'30.830"N	104°46'40.208"W	0.39	
3912.00	9.080	115.700	3852.43	-140.55	-270.19	495.56	40°10'30.772"N	104°46'40.046"W	0.78	
3997.00	10.960	115.230	3936.13	-143.44	-276.54	508.91	40°10'30.709"N	104°46'39.874"W	2.21	
4083.00	13.370	116.060	4020.20	-147.06	-284.40	525.24	40°10'30.632"N	104°46'39.664"W	2.81	
4168.00	13.060	121.660	4102.95	-151.96	-293.75	542.24	40°10'30.539"N	104°46'39.444"W	1.55	
4253.00	13.220	120.550	4185.72	-157.59	-303.74	558.79	40°10'30.440"N	104°46'39.231"W	0.35	
4338.00	13.050	125.660	4268.50	-163.84	-314.27	574.96	40°10'30.336"N	104°46'39.023"W	1.38	
4424.00	12.190	126.750	4352.42	-170.88	-325.36	590.12	40°10'30.227"N	104°46'38.828"W	1.04	
4509.00	11.580	127.430	4435.60	-177.69	-335.92	604.09	40°10'30.122"N	104°46'38.648"W	0.74	
4594.00	14.150	123.880	4518.46	-184.57	-346.90	619.49	40°10'30.014"N	104°46'38.449"W	3.16	
4679.00	14.780	120.000	4600.77	-191.02	-358.11	637.51	40°10'29.903"N	104°46'38.217"W	1.36	
4765.00	15.680	116.420	4683.75	-196.48	-368.77	657.41	40°10'29.798"N	104°46'37.961"W	1.51	
4850.00	16.410	115.520	4765.44	-201.27	-379.05	678.54	40°10'29.696"N	104°46'37.689"W	0.91	
4935.00	15.040	114.580	4847.26	-205.63	-388.81	699.40	40°10'29.600"N	104°46'37.420"W	1.64	
5020.00	13.570	117.280	4929.62	-209.88	-397.97	718.29	40°10'29.509"N	104°46'37.177"W	1.90	
5106.00	13.770	116.990	5013.18	-214.43	-407.24	736.38	40°10'29.418"N	104°46'36.944"W	0.25	
5191.00	14.730	117.200	5095.57	-219.11	-416.77	755.01	40°10'29.323"N	104°46'36.704"W	1.13	
5276.00	13.750	118.200	5177.95	-223.99	-426.48	773.52	40°10'29.227"N	104°46'36.465"W	1.19	
5362.00	11.160	117.830	5261.92	-228.43	-435.20	789.89	40°10'29.141"N	104°46'36.254"W	3.01	
5446.00	10.410	116.070	5344.44	-231.91	-442.33	803.90	40°10'29.071"N	104°46'36.074"W	0.98	
5532.00	11.090	116.740	5428.93	-235.31	-449.47	818.26	40°10'29.000"N	104°46'35.889"W	0.80	
5617.00	11.500	114.630	5512.28	-238.63	-456.68	833.27	40°10'28.929"N	104°46'35.695"W	0.68	
5702.00	10.330	115.170	5595.74	-241.62	-463.45	847.87	40°10'28.862"N	104°46'35.507"W	1.38	
5788.00	9.470	117.050	5680.46	-244.66	-469.95	861.15	40°10'28.798"N	104°46'35.336"W	1.07	
5873.00	11.150	121.470	5764.09	-248.66	-477.42	874.39	40°10'28.724"N	104°46'35.166"W	2.18	
5958.00	10.940	118.470	5847.51	-253.10	-485.55	888.49	40°10'28.644"N	104°46'34.984"W	0.72	
6043.00	10.790	116.190	5930.99	-256.74	-492.91	902.72	40°10'28.571"N	104°46'34.801"W	0.54	
6129.00	11.240	114.870	6015.41	-259.97	-499.99	917.54	40°10'28.501"N	104°46'34.610"W	0.60	
6214.00	10.920	115.410	6098.82	-263.08	-506.93	932.33	40°10'28.432"N	104°46'34.419"W	0.40	
6299.00	10.850	115.030	6182.29	-266.15	-513.76	946.85	40°10'28.365"N	104°46'34.232"W	0.12	
6385.00	10.710	116.000	6266.78	-269.31	-520.69	961.37	40°10'28.296"N	104°46'34.045"W	0.27	
6470.00	10.450	116.530	6350.33	-272.58	-527.60	975.36	40°10'28.228"N	104°46'33.865"W	0.33	
6547.00	8.030	115.890	6426.33	-275.16	-533.07	986.45	40°10'28.174"N	104°46'33.722"W	3.15	
6633.00	8.620	97.990	6511.43	-275.69	-536.59	998.24	40°10'28.139"N	104°46'33.570"W	3.08	
6676.00	10.360	70.260	6553.86	-273.18	-535.73	1005.08	40°10'28.148"N	104°46'33.482"W	11.24	
6718.00	13.210	48.710	6595.00	-267.12	-531.28	1012.24	40°10'28.192"N	104°46'33.390"W	12.37	
6761.00	16.200	32.720	6636.60	-257.37	-522.99	1019.18	40°10'28.274"N	104°46'33.300"W	11.66	
6804.00	18.680	24.540	6677.63	-244.91	-511.67	1025.28	40°10'28.385"N	104°46'33.222"W	8.10	
6846.00	20.560	14.690	6717.20	-230.91	-498.42	1029.95	40°10'28.516"N	104°46'33.162"W	9.04	
6889.00	22.290	6.670	6757.23	-215.27	-483.01	1032.81	40°10'28.669"N	104°46'33.125"W	7.90	
6932.00	24.670	4.350	6796.67	-198.34	-465.96	1034.44	40°10'28.837"N	104°46'33.104"W	5.94	
6974.00	26.680	4.040	6834.52	-180.42	-447.81	1035.77	40°10'29.017"N	104°46'33.087"W	4.80	
7017.00	29.290	4.820	6872.49	-160.54	-427.70	1037.33	40°10'29.215"N	104°46'33.067"W	6.13	
7060.00	32.660	6.400	6909.35	-138.66	-405.68	1039.51	40°10'29.433"N	104°46'33.038"W	8.06	
7102.00	36.490	5.870	6943.93	-115.06	-381.98	1042.05	40°10'29.667"N	104°46'33.006"W	9.15	



# Actual Wellpath Report

RICE 1N-33HZ AWP

Page 4 of 7



## REFERENCE WELLPATH IDENTIFICATION

Operator	KERR-MCGEE OIL & GAS ONSHORE LP	Slot	SLOT#05 RICE 1N-33HZ (614'FSL & 1907'FEL,SEC.33)
Area	COLORADO	Well	RICE 1N-33HZ
Field	WELD COUNTY (KERR MCGEE)	Wellbore	RICE 1N-33HZ AWB
Facility	SEC.33-T3N-R66W		

## WELLPATH DATA (154 stations) † = interpolated/extrapolated station

MD [ft]	Inclination [°]	Azimuth [°]	TVD [ft]	Vert Sect [ft]	North [ft]	East [ft]	Latitude	Longitude	DLS [°/100ft]	Comments
7145.00	40.360	6.210	6977.61	-88.61	-355.41	1044.87	40°10'29.930"N	104°46'32.969"W	9.01	
7187.00	44.150	5.380	7008.69	-60.68	-327.32	1047.71	40°10'30.207"N	104°46'32.933"W	9.12	
7230.00	45.940	3.800	7039.07	-30.68	-296.99	1050.14	40°10'30.507"N	104°46'32.901"W	4.91	
7273.00	48.320	3.570	7068.32	0.30	-265.54	1052.16	40°10'30.818"N	104°46'32.875"W	5.55	
7315.00	52.010	2.950	7095.22	31.97	-233.35	1053.99	40°10'31.136"N	104°46'32.852"W	8.86	
7358.00	53.400	2.550	7121.28	65.49	-199.18	1055.63	40°10'31.473"N	104°46'32.831"W	3.32	
7401.00	57.460	1.270	7145.67	100.08	-163.80	1056.80	40°10'31.823"N	104°46'32.816"W	9.75	
7443.00	63.710	0.290	7166.29	135.65	-127.24	1057.29	40°10'32.184"N	104°46'32.809"W	15.02	
7486.00	70.540	358.960	7183.00	173.97	-87.65	1057.02	40°10'32.576"N	104°46'32.813"W	16.14	
7529.00	76.360	357.180	7195.24	213.55	-46.47	1055.62	40°10'32.983"N	104°46'32.831"W	14.10	
7571.00	80.190	356.470	7203.77	252.79	-5.42	1053.34	40°10'33.388"N	104°46'32.860"W	9.27	
7614.00	83.890	357.700	7209.73	293.49	37.10	1051.18	40°10'33.808"N	104°46'32.888"W	9.06	
7656.00	86.920	359.550	7213.09	333.81	78.95	1050.18	40°10'34.222"N	104°46'32.901"W	8.45	
7680.00	87.720	359.680	7214.21	357.02	102.92	1050.02	40°10'34.459"N	104°46'32.903"W	3.38	
7712.00†	87.478	359.742	7215.55	387.98	134.89	1049.85	40°10'34.775"N	104°46'32.905"W	0.78	7" Casing Point
7758.00	87.130	359.830	7217.72	432.48	180.84	1049.68	40°10'35.229"N	104°46'32.907"W	0.78	
7844.00	91.020	0.170	7219.11	515.83	266.81	1049.68	40°10'36.078"N	104°46'32.907"W	4.54	
7929.00	91.720	0.470	7217.07	598.33	351.79	1050.16	40°10'36.918"N	104°46'32.901"W	0.90	
8014.00	91.630	1.220	7214.59	681.01	436.74	1051.41	40°10'37.758"N	104°46'32.885"W	0.89	
8099.00	90.650	1.150	7212.90	763.81	521.71	1053.17	40°10'38.597"N	104°46'32.862"W	1.16	
8185.00	90.090	1.060	7212.34	847.58	607.69	1054.83	40°10'39.447"N	104°46'32.841"W	0.66	
8270.00	89.790	0.750	7212.43	930.31	692.68	1056.17	40°10'40.287"N	104°46'32.823"W	0.51	
8355.00	90.150	0.470	7212.48	1012.94	777.67	1057.07	40°10'41.127"N	104°46'32.812"W	0.54	
8441.00	91.170	0.440	7211.49	1096.47	863.66	1057.76	40°10'41.977"N	104°46'32.803"W	1.19	
8526.00	89.880	359.960	7210.71	1178.95	948.66	1058.05	40°10'42.816"N	104°46'32.799"W	1.62	
8611.00	89.170	0.080	7211.41	1261.36	1033.65	1058.08	40°10'43.656"N	104°46'32.798"W	0.85	
8696.00	89.450	359.880	7212.44	1343.76	1118.65	1058.05	40°10'44.496"N	104°46'32.799"W	0.40	
8782.00	89.450	359.490	7213.26	1427.02	1204.64	1057.58	40°10'45.346"N	104°46'32.805"W	0.45	
8867.00	89.320	359.090	7214.17	1509.16	1289.63	1056.53	40°10'46.186"N	104°46'32.818"W	0.49	
8952.00	89.850	358.440	7214.79	1591.10	1374.61	1054.70	40°10'47.026"N	104°46'32.842"W	0.99	
9038.00	89.850	358.690	7215.01	1673.92	1460.58	1052.54	40°10'47.875"N	104°46'32.870"W	0.29	
9123.00	89.750	359.170	7215.31	1755.93	1545.56	1050.95	40°10'48.715"N	104°46'32.890"W	0.58	
9208.00	89.380	0.350	7215.96	1838.25	1630.56	1050.60	40°10'49.555"N	104°46'32.894"W	1.45	
9294.00	89.970	1.250	7216.44	1921.91	1716.55	1051.80	40°10'50.405"N	104°46'32.879"W	1.25	
9379.00	90.680	0.460	7215.96	2004.62	1801.54	1053.07	40°10'51.245"N	104°46'32.863"W	1.25	
9464.00	92.310	0.670	7213.74	2087.20	1886.50	1053.91	40°10'52.084"N	104°46'32.852"W	1.93	
9550.00	91.820	0.270	7210.65	2170.69	1972.44	1054.61	40°10'52.933"N	104°46'32.843"W	0.74	
9635.00	89.880	1.470	7209.38	2253.40	2057.42	1055.90	40°10'53.773"N	104°46'32.826"W	2.68	
9720.00	89.820	2.630	7209.61	2336.50	2142.36	1058.94	40°10'54.613"N	104°46'32.787"W	1.37	
9806.00	89.290	2.270	7210.28	2420.70	2228.28	1062.62	40°10'55.462"N	104°46'32.739"W	0.74	
9891.00	87.600	0.830	7212.58	2503.60	2313.21	1064.92	40°10'56.301"N	104°46'32.710"W	2.61	
9976.00	89.450	0.470	7214.77	2586.21	2398.17	1065.88	40°10'57.141"N	104°46'32.697"W	2.22	
10061.00	90.550	0.430	7214.77	2668.78	2483.17	1066.55	40°10'57.980"N	104°46'32.689"W	1.29	
10147.00	90.430	0.060	7214.03	2752.25	2569.16	1066.92	40°10'58.830"N	104°46'32.684"W	0.45	
10232.00	90.680	359.890	7213.21	2834.65	2654.16	1066.88	40°10'59.670"N	104°46'32.684"W	0.36	



# Actual Wellpath Report

RICE 1N-33HZ AWP

Page 5 of 7



REFERENCE WELLPATH IDENTIFICATION				
Operator	KERR-MCGEE OIL & GAS ONSHORE LP		Slot	SLOT#05 RICE 1N-33HZ (614'FSL & 1907'FEL,SEC.33)
Area	COLORADO		Well	RICE 1N-33HZ
Field	WELD COUNTY (KERR MCGEE)		Wellbore	RICE 1N-33HZ AWB
Facility	SEC.33-T3N-R66W			

WELLPATH DATA (154 stations)										
MD [ft]	Inclination [°]	Azimuth [°]	TVD [ft]	Vert Sect [ft]	North [ft]	East [ft]	Latitude	Longitude	DLS [°/100ft]	Comments
10317.00	89.850	0.330	7212.82	2917.09	2739.16	1067.04	40°11'00.510"N	104°46'32.682"W	1.11	
10403.00	90.280	359.890	7212.72	3000.51	2825.16	1067.21	40°11'01.360"N	104°46'32.680"W	0.72	
10488.00	90.610	0.980	7212.06	3083.08	2910.15	1067.85	40°11'02.200"N	104°46'32.671"W	1.34	
10573.00	89.940	359.420	7211.65	3165.55	2995.15	1068.15	40°11'03.040"N	104°46'32.668"W	2.00	
10658.00	88.490	357.210	7212.82	3247.30	3080.09	1065.65	40°11'03.879"N	104°46'32.700"W	3.11	
10744.00	88.490	355.540	7215.08	3329.15	3165.89	1060.21	40°11'04.727"N	104°46'32.770"W	1.94	
10839.00	88.390	357.860	7217.67	3419.72	3260.69	1054.75	40°11'05.664"N	104°46'32.840"W	2.44	
10914.00	89.010	358.180	7219.37	3491.74	3335.63	1052.16	40°11'06.404"N	104°46'32.873"W	0.93	
10999.00	88.590	358.040	7221.15	3573.40	3420.56	1049.36	40°11'07.244"N	104°46'32.910"W	0.52	
11085.00	90.280	358.560	7222.00	3656.11	3506.52	1046.80	40°11'08.093"N	104°46'32.942"W	2.06	
11170.00	90.520	359.330	7221.41	3738.12	3591.50	1045.24	40°11'08.933"N	104°46'32.962"W	0.95	
11255.00	90.800	0.430	7220.43	3820.48	3676.49	1045.06	40°11'09.773"N	104°46'32.965"W	1.34	
11340.00	90.770	0.620	7219.26	3903.07	3761.48	1045.84	40°11'10.613"N	104°46'32.955"W	0.23	
11426.00	91.290	1.150	7217.72	3986.75	3847.45	1047.17	40°11'11.462"N	104°46'32.937"W	0.86	
11511.00	90.710	1.480	7216.23	4069.60	3932.42	1049.12	40°11'12.302"N	104°46'32.912"W	0.79	
11596.00	91.540	1.500	7214.56	4152.51	4017.37	1051.33	40°11'13.142"N	104°46'32.884"W	0.98	
11681.00	91.220	1.790	7212.52	4235.46	4102.31	1053.77	40°11'13.981"N	104°46'32.852"W	0.51	
11702.00	91.660	2.020	7211.99	4255.97	4123.29	1054.47	40°11'14.188"N	104°46'32.843"W	2.36	Last BHI MWD Survey
11760.00	91.660	2.020	7210.31	4312.65	4181.23	1056.51	40°11'14.761"N	104°46'32.817"W	0.00	Projection to Bit

HOLE & CASING SECTIONS - Ref Wellbore: RICE 1N-33HZ AWB Ref Wellpath: RICE 1N-33HZ AWP									
String/Diameter	Start MD [ft]	End MD [ft]	Interval [ft]	Start TVD [ft]	End TVD [ft]	Start N/S [ft]	Start E/W [ft]	End N/S [ft]	End E/W [ft]
13.5in Open Hole	17.00	739.00	722.00	17.00	739.00	0.00	0.00	-0.79	-0.23
9.625in Casing Surface	17.00	739.00	722.00	17.00	739.00	0.00	0.00	-0.79	-0.23
8.75in Open Hole	739.00	7732.00	6993.00	739.00	7216.46	-0.79	-0.23	154.87	1049.77
7in Casing Intermediate	17.00	7712.00	7695.00	17.00	7215.55	0.00	0.00	134.89	1049.85
6.125in Open Hole	7712.00	11760.00	4048.00	7215.55	7210.31	134.89	1049.85	4181.23	1056.51



# Actual Wellpath Report

RICE 1N-33HZ AWP

Page 6 of 7



REFERENCE WELLPATH IDENTIFICATION			
Operator	KERR-MCGEE OIL & GAS ONSHORE LP	Slot	SLOT#05 RICE 1N-33HZ (614'FSL & 1907'FEL,SEC.33)
Area	COLORADO	Well	RICE 1N-33HZ
Field	WELD COUNTY (KERR MCGEE)	Wellbore	RICE 1N-33HZ AWB
Facility	SEC.33-T3N-R66W		

TARGETS									
Name	MD [ft]	TVD [ft]	North [ft]	East [ft]	Grid East [US ft]	Grid North [US ft]	Latitude	Longitude	Shape
RICE 15-33HZ PAD SECTION LINES		0.00	-0.81	-119.93	3201189.88	1307759.68	40°10'33.434"N	104°46'47.975"W	polygon
RICE 1N-33HZ BHL ON PLAT (460'FNL & 790'FEL,SEC.33)		7170.00	4206.56	1096.01	3202371.54	1311976.60	40°11'15.011"N	104°46'32.308"W	point
RICE 15-33HZ PAD HARDLINES (460' SETBACKS)		7178.00	-0.81	-119.93	3201189.88	1307759.68	40°10'33.434"N	104°46'47.975"W	polygon

WELLPATH COMPOSITION - Ref Wellbore: RICE 1N-33HZ AWB Ref Wellpath: RICE 1N-33HZ AWP				
Start MD [ft]	End MD [ft]	Positional Uncertainty Model	Log Name/Comment	Wellbore
17.00	687.00	Generic gyro - continuous (Standard)	GYRODATA SURVEYS <117-687>	RICE 1N-33HZ AWB
687.00	7680.00	NaviTrak (Standard)	BHI MWD SURVEYS 8 3/4" HOLE <779-7680>	RICE 1N-33HZ AWB
7680.00	11702.00	NaviTrak (Standard)	BHI MWD SURVEYS 6 1/8" HOLE <7758-11702>	RICE 1N-33HZ AWB
11702.00	11760.00	Blind Drilling (std)	Projection to bit	RICE 1N-33HZ AWB



# Actual Wellpath Report

RICE 1N-33HZ AWP

Page 7 of 7



## REFERENCE WELLPATH IDENTIFICATION

Operator	<b>KERR-MCGEE OIL &amp; GAS ONSHORE LP</b>	Slot	<b>SLOT#05 RICE 1N-33HZ (614'FSL &amp; 1907'FEL,SEC.33)</b>
Area	<b>COLORADO</b>	Well	<b>RICE 1N-33HZ</b>
Field	<b>WELD COUNTY (KERR MCGEE)</b>	Wellbore	<b>RICE 1N-33HZ AWB</b>
Facility	<b>SEC.33-T3N-R66W</b>		

## WELLPATH COMMENTS

MD [ft]	Inclination [°]	Azimuth [°]	TVD [ft]	Comment
17.00	0.000	141.240	17.00	Tie-On
117.00	0.430	141.240	117.00	Begin GYRO Surveys
687.00	0.050	87.510	687.00	Tie-Into GYRO Surveys
779.00	0.280	319.280	779.00	Begin BHI MWD Surveys
7712.00	87.478	359.742	7215.55	7" Casing Point
11702.00	91.660	2.020	7211.99	Last BHI MWD Survey
11760.00	91.660	2.020	7210.31	Projection to Bit