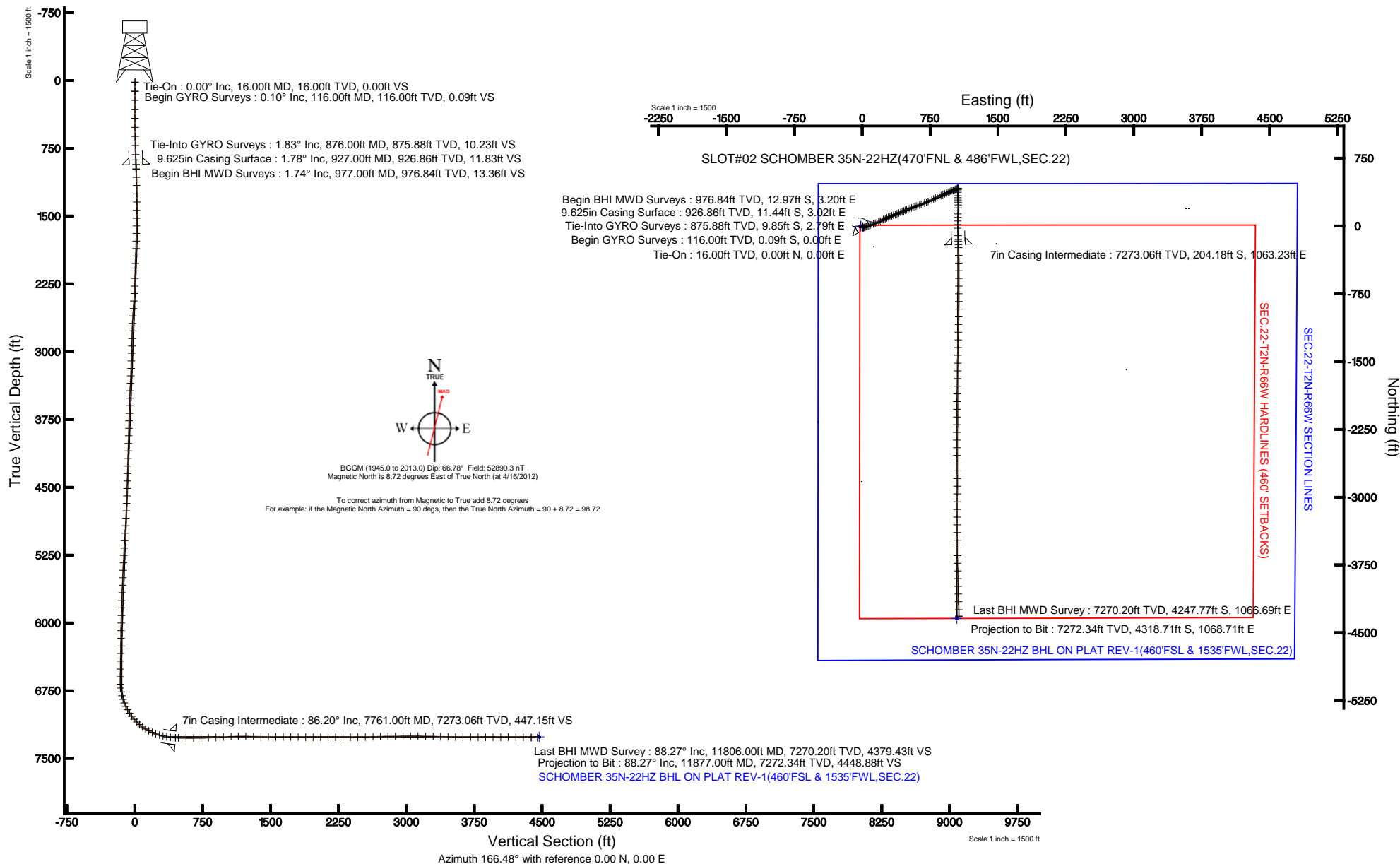


KERR-MCGEE OIL & GAS ONSHORE LP

Location: COLORADO Slot: SLOT#02 SCHOMBER 35N-22HZ(470'FNL & 486'FWL,SEC.22)
 Field: WELD COUNTY (KERR MCGEE) Well: SCHOMBER 35N-22HZ
 Facility: SEC.22-T2N-R66W Wellbore: SCHOMBER 35N-22HZ PWB

Plot reference wellpath is SCHOMBER 35N-22HZ (REV-A.0) PWP	
True vertical depths are referenced to XTREME 20 (RKB)	Grid System: NAD83 / Lambert Colorado SP, Northern Zone (501), US feet
Measured depths are referenced to XTREME 20 (RKB)	North Reference: True north
XTREME 20 (RKB) to Mean Sea Level: 5023 feet	Scale: True distance
Mean Sea Level to Mud line (At Slot: SLOT#02 SCHOMBER 35N-22HZ(470'FNL & 486'FWL,SEC.22)): 0 feet	Depths are in feet
Coordinates are in feet referenced to Slot	Created by: wilsjef02 on 5/29/2012





Actual Wellpath Report

SCHOMBER 35N-22HZ AWP

Page 1 of 7



REFERENCE WELLPATH IDENTIFICATION

Operator	KERR-MCGEE OIL & GAS ONSHORE LP	Slot	SLOT#02 SCHOMBER 35N-22HZ(470'FNL & 486'FWL,SEC.22)
Area	COLORADO	Well	SCHOMBER 35N-22HZ
Field	WELD COUNTY (KERR MCGEE)	Wellbore	SCHOMBER 35N-22HZ AWB
Facility	SEC.22-T2N-R66W		

REPORT SETUP INFORMATION

Projection System	NAD83 / Lambert Colorado SP, Northern Zone (501), US feet	Software System	WellArchitect® 3.0.2
North Reference	True	User	Wilsjef02
Scale	0.999959	Report Generated	5/29/2012 at 07:54:03
Convergence at slot	0.47° East	Database/Source file	WellArchitectDB/SCHOMBER_35N-22HZ_AWB.xml

WELLPATH LOCATION

	Local coordinates		Grid coordinates		Geographic coordinates	
	North[ft]	East[ft]	Easting[US ft]	Northing[US ft]	Latitude	Longitude
Slot Location	0.00	16.23	3203817.21	1290898.81	40°07'46.600"N	104°46'15.913"W
Facility Reference Pt			3203800.98	1290898.68	40°07'46.600"N	104°46'16.122"W
Field Reference Pt			3197771.84	1268891.29	40°04'09.600"N	104°47'36.000"W

WELLPATH DATUM

Calculation method	Minimum curvature	XTREME 20 (RKB) to Facility Vertical Datum	5023.00ft
Horizontal Reference Pt	Slot	XTREME 20 (RKB) to Mean Sea Level	5023.00ft
Vertical Reference Pt	XTREME 20 (RKB)	XTREME 20 (RKB) to Mud Line at Slot (SLOT#02 SCHOMBER 35N-22HZ(470'FNL & 486'FWL,SEC.22))	5023.00ft
MD Reference Pt	XTREME 20 (RKB)	Section Origin	N 0.00, E 0.00 ft
Field Vertical Reference	Mean Sea Level	Section Azimuth	166.10°



Actual Wellpath Report

SCHOMBER 35N-22HZ AWP

Page 2 of 7



REFERENCE WELLPATH IDENTIFICATION

Operator	KERR-MCGEE OIL & GAS ONSHORE LP	Slot	SLOT#02 SCHOMBER 35N-22HZ(470'FNL & 486'FWL,SEC.22)
Area	COLORADO	Well	SCHOMBER 35N-22HZ
Field	WELD COUNTY (KERR MCGEE)	Wellbore	SCHOMBER 35N-22HZ AWB
Facility	SEC.22-T2N-R66W		

WELLPATH DATA (152 stations) † = interpolated/extrapolated station

MD [ft]	Inclination [°]	Azimuth [°]	TVD [ft]	Vert Sect [ft]	North [ft]	East [ft]	Latitude	Longitude	DLS ["/100ft]	Comments
0.00†	0.000	177.320	0.00	0.00	0.00	0.00	40°07'46.600"N	104°46'15.913"W	0.00	
16.00	0.000	177.320	16.00	0.00	0.00	0.00	40°07'46.600"N	104°46'15.913"W	0.00	Tie-On
116.00	0.100	177.320	116.00	0.09	-0.09	0.00	40°07'46.599"N	104°46'15.913"W	0.10	Begin GYRO Surveys
216.00	0.420	73.050	216.00	0.15	-0.07	0.36	40°07'46.599"N	104°46'15.908"W	0.46	
316.00	0.100	227.630	316.00	0.17	-0.02	0.64	40°07'46.600"N	104°46'15.905"W	0.51	
416.00	0.510	176.630	416.00	0.65	-0.52	0.61	40°07'46.595"N	104°46'15.905"W	0.45	
516.00	0.830	164.500	515.99	1.81	-1.66	0.83	40°07'46.584"N	104°46'15.902"W	0.35	
616.00	1.270	160.380	615.97	3.64	-3.41	1.39	40°07'46.566"N	104°46'15.895"W	0.45	
716.00	1.050	169.030	715.95	5.66	-5.35	1.94	40°07'46.547"N	104°46'15.888"W	0.28	
816.00	1.940	168.820	815.92	8.26	-7.91	2.44	40°07'46.522"N	104°46'15.882"W	0.89	
876.00	1.830	171.040	875.88	10.23	-9.85	2.79	40°07'46.503"N	104°46'15.877"W	0.22	Tie-Into GYRO Surveys
977.00	1.740	174.000	976.84	13.36	-12.97	3.20	40°07'46.472"N	104°46'15.872"W	0.13	Begin BHI MWD Surveys
1069.00	1.320	130.440	1068.81	15.60	-15.05	4.15	40°07'46.451"N	104°46'15.860"W	1.30	
1160.00	2.170	117.110	1159.76	17.59	-16.51	6.48	40°07'46.437"N	104°46'15.830"W	1.03	
1252.00	3.080	96.190	1251.67	19.58	-17.57	10.49	40°07'46.426"N	104°46'15.778"W	1.42	
1344.00	4.620	71.300	1343.46	20.12	-16.65	16.46	40°07'46.435"N	104°46'15.701"W	2.43	
1436.00	6.120	61.990	1435.06	18.61	-13.16	24.30	40°07'46.470"N	104°46'15.600"W	1.88	
1524.00	6.700	73.940	1522.51	17.27	-9.54	33.37	40°07'46.506"N	104°46'15.483"W	1.65	
1609.00	8.060	73.350	1606.81	16.80	-6.46	43.85	40°07'46.536"N	104°46'15.349"W	1.60	
1694.00	9.760	72.720	1690.78	16.09	-2.61	56.44	40°07'46.574"N	104°46'15.186"W	2.00	
1779.00	11.450	70.460	1774.32	14.84	2.35	71.27	40°07'46.623"N	104°46'14.995"W	2.05	
1865.00	12.530	67.110	1858.45	12.54	8.84	87.91	40°07'46.687"N	104°46'14.781"W	1.49	
1950.00	13.380	66.930	1941.28	9.53	16.28	105.45	40°07'46.761"N	104°46'14.555"W	1.00	
2035.00	13.680	68.300	2023.92	6.60	23.85	123.84	40°07'46.836"N	104°46'14.319"W	0.52	
2120.00	13.820	70.770	2106.49	4.29	30.91	142.76	40°07'46.905"N	104°46'14.075"W	0.71	
2205.00	14.010	67.480	2188.99	1.81	38.19	161.85	40°07'46.977"N	104°46'13.829"W	0.96	
2291.00	13.540	66.330	2272.52	-1.46	46.22	180.69	40°07'47.057"N	104°46'13.587"W	0.63	
2376.00	14.070	64.680	2355.07	-5.20	54.63	199.14	40°07'47.140"N	104°46'13.349"W	0.78	
2461.00	13.520	62.050	2437.61	-9.66	63.71	217.26	40°07'47.230"N	104°46'13.116"W	0.98	
2546.00	13.650	59.220	2520.24	-14.98	73.50	234.65	40°07'47.326"N	104°46'12.892"W	0.80	
2632.00	13.850	62.010	2603.77	-20.43	83.52	252.46	40°07'47.425"N	104°46'12.663"W	0.81	
2717.00	13.380	64.850	2686.39	-24.83	92.48	270.35	40°07'47.514"N	104°46'12.433"W	0.96	
2802.00	12.870	68.570	2769.17	-27.99	100.12	288.06	40°07'47.589"N	104°46'12.204"W	1.16	
2888.00	13.370	70.210	2852.92	-30.26	106.98	306.33	40°07'47.657"N	104°46'11.969"W	0.72	
2973.00	14.160	70.730	2935.48	-32.25	113.74	325.40	40°07'47.724"N	104°46'11.724"W	0.94	
3058.00	14.860	70.210	3017.77	-34.34	120.86	345.47	40°07'47.794"N	104°46'11.465"W	0.84	
3144.00	13.850	67.870	3101.08	-36.94	128.47	365.38	40°07'47.870"N	104°46'11.209"W	1.35	
3229.00	14.090	69.590	3183.57	-39.57	135.92	384.50	40°07'47.943"N	104°46'10.963"W	0.56	
3314.00	14.320	66.350	3265.97	-42.53	143.74	403.83	40°07'48.020"N	104°46'10.714"W	0.97	
3399.00	13.260	64.810	3348.52	-46.22	152.11	422.28	40°07'48.103"N	104°46'10.477"W	1.32	
3484.00	13.350	66.380	3431.24	-49.78	160.19	440.09	40°07'48.183"N	104°46'10.247"W	0.44	
3570.00	12.250	66.980	3515.10	-52.90	167.73	457.58	40°07'48.258"N	104°46'10.022"W	1.29	
3655.00	11.810	67.300	3598.23	-55.66	174.62	473.91	40°07'48.326"N	104°46'09.812"W	0.52	
3740.00	12.330	67.010	3681.35	-58.43	181.52	490.29	40°07'48.394"N	104°46'09.601"W	0.62	
3826.00	13.200	66.930	3765.23	-61.45	188.95	507.77	40°07'48.467"N	104°46'09.376"W	1.01	



Actual Wellpath Report

SCHOMBER 35N-22HZ AWP

Page 3 of 7



REFERENCE WELLPATH IDENTIFICATION

Operator	KERR-MCGEE OIL & GAS ONSHORE LP	Slot	SLOT#02 SCHOMBER 35N-22HZ(470'FNL & 486'FWL,SEC.22)
Area	COLORADO	Well	SCHOMBER 35N-22HZ
Field	WELD COUNTY (KERR MCGEE)	Wellbore	SCHOMBER 35N-22HZ AWB
Facility	SEC.22-T2N-R66W		

WELLPATH DATA (152 stations)

MD [ft]	Inclination [°]	Azimuth [°]	TVD [ft]	Vert Sect [ft]	North [ft]	East [ft]	Latitude	Longitude	DLS [°/100ft]	Comments
3911.00	14.300	71.920	3847.79	-63.76	196.01	526.68	40°07'48.537"N	104°46'09.132"W	1.90	
3996.00	13.380	70.730	3930.33	-65.44	202.52	545.95	40°07'48.601"N	104°46'08.884"W	1.13	
4082.00	12.230	68.440	4014.19	-67.59	209.15	563.81	40°07'48.667"N	104°46'08.654"W	1.46	
4167.00	11.730	66.860	4097.33	-70.18	215.85	580.13	40°07'48.733"N	104°46'08.444"W	0.70	
4252.00	12.390	68.550	4180.46	-72.76	222.58	596.56	40°07'48.800"N	104°46'08.233"W	0.88	
4338.00	13.030	71.380	4264.35	-74.77	229.05	614.34	40°07'48.863"N	104°46'08.004"W	1.04	
4423.00	13.860	69.820	4347.02	-76.68	235.62	632.97	40°07'48.928"N	104°46'07.764"W	1.07	
4508.00	13.090	69.490	4429.68	-78.90	242.51	651.55	40°07'48.996"N	104°46'07.525"W	0.91	
4594.00	13.120	71.280	4513.44	-80.84	249.05	669.91	40°07'49.061"N	104°46'07.288"W	0.47	
4679.00	14.560	69.240	4595.97	-82.93	255.94	689.04	40°07'49.129"N	104°46'07.042"W	1.79	
4764.00	14.540	67.180	4678.25	-85.86	263.86	708.87	40°07'49.207"N	104°46'06.787"W	0.61	
4849.00	14.250	65.790	4760.58	-89.38	272.29	728.24	40°07'49.291"N	104°46'06.537"W	0.53	
4935.00	14.480	65.750	4843.89	-93.21	281.05	747.70	40°07'49.377"N	104°46'06.287"W	0.27	
5020.00	15.600	63.850	4925.98	-97.55	290.45	767.65	40°07'49.470"N	104°46'06.030"W	1.44	
5105.00	15.270	62.600	5007.91	-102.58	300.64	787.84	40°07'49.571"N	104°46'05.770"W	0.55	
5191.00	15.260	63.540	5090.88	-107.69	310.89	808.03	40°07'49.672"N	104°46'05.510"W	0.29	
5276.00	15.460	64.870	5172.84	-112.33	320.69	828.30	40°07'49.769"N	104°46'05.249"W	0.48	
5361.00	16.180	66.200	5254.62	-116.57	330.28	849.40	40°07'49.864"N	104°46'04.978"W	0.95	
5447.00	15.470	65.670	5337.36	-120.71	339.84	870.81	40°07'49.958"N	104°46'04.702"W	0.84	
5532.00	14.710	68.000	5419.43	-124.28	348.55	891.15	40°07'50.044"N	104°46'04.440"W	1.14	
5617.00	13.960	67.530	5501.78	-127.33	356.51	910.63	40°07'50.123"N	104°46'04.189"W	0.89	
5703.00	13.670	65.170	5585.30	-130.80	364.75	929.44	40°07'50.204"N	104°46'03.947"W	0.74	
5788.00	13.240	65.420	5667.96	-134.51	373.01	947.40	40°07'50.286"N	104°46'03.716"W	0.51	
5873.00	11.500	65.010	5750.99	-137.95	380.64	963.94	40°07'50.361"N	104°46'03.503"W	2.05	
5959.00	9.990	67.520	5835.48	-140.71	387.12	978.60	40°07'50.425"N	104°46'03.314"W	1.84	
6043.00	9.490	66.720	5918.27	-142.92	392.64	991.69	40°07'50.480"N	104°46'03.146"W	0.62	
6129.00	9.240	66.530	6003.12	-145.23	398.19	1004.54	40°07'50.535"N	104°46'02.980"W	0.29	
6214.00	9.000	71.650	6087.05	-146.88	403.00	1017.11	40°07'50.582"N	104°46'02.819"W	1.00	
6299.00	8.050	73.640	6171.11	-147.65	406.77	1029.13	40°07'50.620"N	104°46'02.664"W	1.17	
6385.00	6.840	71.840	6256.38	-148.29	410.06	1039.77	40°07'50.652"N	104°46'02.527"W	1.43	
6470.00	4.860	61.990	6340.93	-149.54	413.33	1047.76	40°07'50.684"N	104°46'02.424"W	2.60	
6555.00	3.290	54.780	6425.72	-151.31	416.43	1052.94	40°07'50.715"N	104°46'02.357"W	1.94	
6641.00	1.450	54.790	6511.64	-152.60	418.48	1055.84	40°07'50.735"N	104°46'02.320"W	2.14	
6726.00	1.320	52.060	6596.62	-153.39	419.70	1057.49	40°07'50.747"N	104°46'02.299"W	0.17	
6809.00	0.870	139.840	6679.61	-153.21	419.81	1058.65	40°07'50.748"N	104°46'02.284"W	1.87	
6852.00	5.820	182.610	6722.52	-150.83	417.38	1058.76	40°07'50.724"N	104°46'02.282"W	12.13	
6895.00	10.680	180.800	6765.06	-144.88	411.21	1058.61	40°07'50.663"N	104°46'02.284"W	11.32	
6938.00	14.250	182.370	6807.04	-135.94	401.94	1058.33	40°07'50.572"N	104°46'02.288"W	8.34	
6980.00	18.320	182.960	6847.35	-124.66	390.18	1057.78	40°07'50.456"N	104°46'02.295"W	9.70	
7023.00	21.880	183.490	6887.72	-110.54	375.43	1056.94	40°07'50.310"N	104°46'02.306"W	8.29	
7065.00	26.130	182.350	6926.08	-94.19	358.37	1056.09	40°07'50.141"N	104°46'02.317"W	10.18	
7108.00	29.610	180.070	6964.09	-74.78	338.28	1055.68	40°07'49.943"N	104°46'02.322"W	8.46	
7151.00	33.380	177.040	7000.75	-52.85	315.83	1056.28	40°07'49.721"N	104°46'02.314"W	9.51	
7194.00	37.650	177.280	7035.74	-28.34	290.89	1057.52	40°07'49.474"N	104°46'02.298"W	9.94	
7236.00	42.050	176.860	7067.98	-1.92	264.02	1058.90	40°07'49.209"N	104°46'02.281"W	10.50	



Actual Wellpath Report

SCHOMBER 35N-22HZ AWP

Page 4 of 7



REFERENCE WELLPATH IDENTIFICATION

Operator	KERR-MCGEE OIL & GAS ONSHORE LP	Slot	SLOT#02 SCHOMBER 35N-22HZ(470'FNL & 486'FWL,SEC.22)
Area	COLORADO	Well	SCHOMBER 35N-22HZ
Field	WELD COUNTY (KERR MCGEE)	Wellbore	SCHOMBER 35N-22HZ AWB
Facility	SEC.22-T2N-R66W		

WELLPATH DATA (152 stations) † = interpolated/extrapolated station

MD [ft]	Inclination [°]	Azimuth [°]	TVD [ft]	Vert Sect [ft]	North [ft]	East [ft]	Latitude	Longitude	DLS [°/100ft]	Comments
7279.00	46.350	179.040	7098.80	27.40	234.07	1059.95	40°07'48.913"N	104°46'02.267"W	10.61	
7321.00	50.600	180.940	7126.64	57.91	202.63	1059.94	40°07'48.602"N	104°46'02.267"W	10.67	
7364.00	54.290	183.220	7152.85	90.67	168.58	1058.68	40°07'48.266"N	104°46'02.283"W	9.55	
7406.00	59.040	182.240	7175.92	124.28	133.54	1057.02	40°07'47.919"N	104°46'02.305"W	11.48	
7449.00	63.510	181.930	7196.58	160.52	95.86	1055.65	40°07'47.547"N	104°46'02.322"W	10.41	
7492.00	67.240	179.990	7214.50	198.30	56.79	1055.01	40°07'47.161"N	104°46'02.331"W	9.59	
7535.00	69.670	179.190	7230.29	237.19	16.80	1055.29	40°07'46.766"N	104°46'02.327"W	5.91	
7577.00	74.660	178.570	7243.15	276.17	-23.16	1056.08	40°07'46.371"N	104°46'02.317"W	11.96	
7620.00	76.500	178.060	7253.86	316.87	-64.79	1057.30	40°07'45.960"N	104°46'02.301"W	4.43	
7662.00	80.450	177.500	7262.25	357.16	-105.90	1058.90	40°07'45.553"N	104°46'02.281"W	9.50	
7705.00	84.010	177.170	7268.06	398.95	-148.45	1060.88	40°07'45.133"N	104°46'02.255"W	8.31	
7723.00	84.260	177.240	7269.90	416.52	-166.34	1061.75	40°07'44.956"N	104°46'02.244"W	1.44	
7761.00†	86.196	178.292	7273.06	453.60	-204.18	1063.23	40°07'44.582"N	104°46'02.225"W	5.80	7" Casing Point
7795.00	87.930	179.230	7274.80	486.73	-238.12	1063.96	40°07'44.247"N	104°46'02.216"W	5.80	
7881.00	89.130	178.430	7277.01	570.58	-324.07	1065.72	40°07'43.397"N	104°46'02.193"W	1.68	
7966.00	90.920	178.840	7276.97	653.56	-409.05	1067.74	40°07'42.558"N	104°46'02.167"W	2.16	
8051.00	90.890	179.890	7275.63	736.28	-494.03	1068.68	40°07'41.718"N	104°46'02.155"W	1.24	
8136.00	92.340	180.550	7273.23	818.67	-578.99	1068.36	40°07'40.878"N	104°46'02.159"W	1.87	
8221.00	92.740	180.290	7269.47	900.95	-663.91	1067.74	40°07'40.039"N	104°46'02.167"W	0.56	
8307.00	93.410	179.840	7264.85	984.29	-749.78	1067.64	40°07'39.190"N	104°46'02.169"W	0.94	
8392.00	91.970	180.510	7260.86	1066.64	-834.68	1067.38	40°07'38.351"N	104°46'02.172"W	1.87	
8477.00	90.950	180.990	7258.70	1148.85	-919.65	1066.27	40°07'37.512"N	104°46'02.186"W	1.33	
8562.00	89.050	181.030	7258.70	1230.99	-1004.63	1064.77	40°07'36.672"N	104°46'02.206"W	2.24	
8648.00	88.920	180.930	7260.22	1314.09	-1090.60	1063.30	40°07'35.822"N	104°46'02.225"W	0.19	
8733.00	88.520	180.960	7262.12	1396.23	-1175.57	1061.90	40°07'34.983"N	104°46'02.243"W	0.47	
8818.00	89.290	180.940	7263.74	1478.38	-1260.54	1060.49	40°07'34.143"N	104°46'02.261"W	0.91	
8903.00	89.500	181.030	7264.64	1560.52	-1345.53	1059.03	40°07'33.303"N	104°46'02.280"W	0.27	
8988.00	90.150	181.310	7264.90	1642.60	-1430.51	1057.29	40°07'32.463"N	104°46'02.302"W	0.83	
9074.00	89.410	180.960	7265.23	1725.65	-1516.49	1055.59	40°07'31.614"N	104°46'02.324"W	0.95	
9159.00	89.380	181.160	7266.13	1807.77	-1601.47	1054.01	40°07'30.774"N	104°46'02.344"W	0.24	
9244.00	89.290	181.350	7267.12	1889.81	-1686.44	1052.15	40°07'29.934"N	104°46'02.368"W	0.25	
9330.00	89.100	181.420	7268.32	1972.76	-1772.41	1050.07	40°07'29.085"N	104°46'02.395"W	0.24	
9415.00	90.150	181.590	7268.88	2054.70	-1857.38	1047.84	40°07'28.245"N	104°46'02.424"W	1.25	
9500.00	90.580	180.640	7268.34	2136.80	-1942.36	1046.19	40°07'27.405"N	104°46'02.445"W	1.23	
9585.00	90.300	180.330	7267.69	2219.13	-2027.35	1045.47	40°07'26.565"N	104°46'02.455"W	0.49	
9671.00	89.840	180.250	7267.58	2302.50	-2113.35	1045.03	40°07'25.715"N	104°46'02.460"W	0.54	
9756.00	90.700	180.270	7267.18	2384.92	-2198.35	1044.65	40°07'24.875"N	104°46'02.465"W	1.01	
9841.00	89.660	180.140	7266.91	2467.36	-2283.35	1044.34	40°07'24.036"N	104°46'02.469"W	1.23	
9926.00	91.840	179.930	7265.80	2549.84	-2368.33	1044.29	40°07'23.196"N	104°46'02.470"W	2.58	
10012.00	91.810	179.600	7263.06	2633.37	-2454.29	1044.64	40°07'22.346"N	104°46'02.466"W	0.39	
10097.00	92.000	179.360	7260.24	2716.01	-2539.24	1045.41	40°07'21.507"N	104°46'02.456"W	0.36	
10182.00	90.730	178.900	7258.21	2798.80	-2624.20	1046.71	40°07'20.667"N	104°46'02.439"W	1.59	
10267.00	90.150	178.820	7257.56	2881.70	-2709.18	1048.40	40°07'19.827"N	104°46'02.417"W	0.69	
10353.00	90.890	179.950	7256.78	2965.39	-2795.17	1049.32	40°07'18.978"N	104°46'02.406"W	1.57	
10437.00	90.580	180.040	7255.70	3046.93	-2879.17	1049.33	40°07'18.148"N	104°46'02.406"W	0.38	



Actual Wellpath Report

SCHOMBER 35N-22HZ AWP

Page 5 of 7



REFERENCE WELLPATH IDENTIFICATION

Operator	KERR-MCGEE OIL & GAS ONSHORE LP	Slot	SLOT#02 SCHOMBER 35N-22HZ(470'FNL & 486'FWL,SEC.22)
Area	COLORADO	Well	SCHOMBER 35N-22HZ
Field	WELD COUNTY (KERR MCGEE)	Wellbore	SCHOMBER 35N-22HZ AWB
Facility	SEC.22-T2N-R66W		

WELLPATH DATA (152 stations)

MD [ft]	Inclination [°]	Azimuth [°]	TVD [ft]	Vert Sect [ft]	North [ft]	East [ft]	Latitude	Longitude	DLS [°/100ft]	Comments
10523.00	89.190	180.500	7255.87	3130.31	-2965.16	1048.92	40°07'17.298"N	104°46'02.411"W	1.70	
10609.00	88.730	180.330	7257.43	3213.62	-3051.15	1048.30	40°07'16.448"N	104°46'02.419"W	0.57	
10694.00	88.670	179.950	7259.36	3296.06	-3136.12	1048.09	40°07'15.608"N	104°46'02.422"W	0.45	
10779.00	88.120	179.950	7261.74	3378.56	-3221.09	1048.16	40°07'14.769"N	104°46'02.421"W	0.65	
10864.00	88.610	179.580	7264.17	3461.12	-3306.05	1048.51	40°07'13.929"N	104°46'02.416"W	0.72	
10949.00	89.450	180.010	7265.61	3543.69	-3391.04	1048.82	40°07'13.089"N	104°46'02.412"W	1.11	
11035.00	89.850	179.580	7266.13	3627.24	-3477.04	1049.13	40°07'12.239"N	104°46'02.408"W	0.68	
11120.00	89.600	179.110	7266.54	3709.98	-3562.03	1050.10	40°07'11.399"N	104°46'02.396"W	0.63	
11205.00	89.530	179.210	7267.19	3792.78	-3647.02	1051.34	40°07'10.560"N	104°46'02.380"W	0.14	
11290.00	89.780	178.700	7267.70	3875.65	-3732.00	1052.89	40°07'09.720"N	104°46'02.360"W	0.67	
11375.00	89.880	178.750	7267.95	3958.59	-3816.98	1054.78	40°07'08.880"N	104°46'02.336"W	0.13	
11461.00	91.010	178.480	7267.28	4042.55	-3902.95	1056.86	40°07'08.030"N	104°46'02.309"W	1.35	
11546.00	90.240	178.470	7266.35	4125.57	-3987.92	1059.12	40°07'07.191"N	104°46'02.280"W	0.91	
11631.00	89.380	178.320	7266.64	4208.62	-4072.88	1061.51	40°07'06.351"N	104°46'02.249"W	1.03	
11716.00	88.860	178.260	7267.94	4291.69	-4157.83	1064.04	40°07'05.512"N	104°46'02.217"W	0.62	
11806.00	88.270	178.370	7270.20	4379.63	-4247.77	1066.69	40°07'04.623"N	104°46'02.183"W	0.67	Last BHI MWD Survey
11877.00	88.270	178.370	7272.34	4448.97	-4318.71	1068.71	40°07'03.922"N	104°46'02.157"W	0.00	Projection to Bit

HOLE & CASING SECTIONS - Ref Wellbore: SCHOMBER 35N-22HZ AWB Ref Wellpath: SCHOMBER 35N-22HZ AWP

String/Diameter	Start MD [ft]	End MD [ft]	Interval [ft]	Start TVD [ft]	End TVD [ft]	Start N/S [ft]	Start E/W [ft]	End N/S [ft]	End E/W [ft]
12.25in Open Hole	16.00	927.00	911.00	16.00	926.86	0.00	0.00	-11.44	3.02
9.625in Casing Surface	16.00	927.00	911.00	16.00	926.86	0.00	0.00	-11.44	3.02
8.75in Open Hole	927.00	7778.00	6851.00	926.86	7274.06	-11.44	3.02	-221.14	1063.66
7in Casing Intermediate	16.00	7761.00	7745.00	16.00	7273.06	0.00	0.00	-204.18	1063.23
6.125in Open Hole	7761.00	11877.00	4116.00	7273.06	7272.34	-204.18	1063.23	-4318.71	1068.71



Actual Wellpath Report

SCHOMBER 35N-22HZ AWP

Page 6 of 7



REFERENCE WELLPATH IDENTIFICATION			
Operator	KERR-MCGEE OIL & GAS ONSHORE LP	Slot	SLOT#02 SCHOMBER 35N-22HZ(470'FNL & 486'FWL,SEC.22)
Area	COLORADO	Well	SCHOMBER 35N-22HZ
Field	WELD COUNTY (KERR MCGEE)	Wellbore	SCHOMBER 35N-22HZ AWB
Facility	SEC.22-T2N-R66W		

TARGETS									
Name	MD [ft]	TVD [ft]	North [ft]	East [ft]	Grid East [US ft]	Grid North [US ft]	Latitude	Longitude	Shape
SEC.22-T2N-R66W SECTION LINES		-1.00	0.00	-16.23	3203800.98	1290898.68	40°07'46.600"N	104°46'16.122"W	polygon
SCHOMBER 35N-22HZ BHL ON PLAT REV-1(460'FSL & 1535'FWL,SEC.22)		7264.00	-4343.18	1044.61	3204897.44	1286564.55	40°07'03.680"N	104°46'02.467"W	point
SEC.22-T2N-R66W HARDLINES		7999.00	0.00	-16.23	3203800.98	1290898.68	40°07'46.600"N	104°46'16.122"W	polygon

WELLPATH COMPOSITION - Ref Wellbore: SCHOMBER 35N-22HZ AWB Ref Wellpath: SCHOMBER 35N-22HZ AWP					
Start MD [ft]	End MD [ft]	Positional Uncertainty Model	Log Name/Comment	Wellbore	
16.00	876.00	Gyrodata standard - Continuous gyro	GYRODATA SURVEYS <100-876>	SCHOMBER 35N-22HZ AWB	
876.00	7723.00	NaviTrak (Standard)	BHI MWD SURVEYS 8 3/4" HOLE <977-7723>	SCHOMBER 35N-22HZ AWB	
7723.00	11806.00	OnTrak (Standard)	BHI MWD SURVEYS 6 1/8" HOLE <7795-11806>	SCHOMBER 35N-22HZ AWB	
11806.00	11877.00	Blind Drilling (std)	Projection to bit	SCHOMBER 35N-22HZ AWB	



Actual Wellpath Report

SCHOMBER 35N-22HZ AWP

Page 7 of 7



REFERENCE WELLPATH IDENTIFICATION

Operator	KERR-MCGEE OIL & GAS ONSHORE LP	Slot	SLOT#02 SCHOMBER 35N-22HZ(470'FNL & 486'FWL,SEC.22)
Area	COLORADO	Well	SCHOMBER 35N-22HZ
Field	WELD COUNTY (KERR MCGEE)	Wellbore	SCHOMBER 35N-22HZ AWB
Facility	SEC.22-T2N-R66W		

WELLPATH COMMENTS

MD [ft]	Inclination [°]	Azimuth [°]	TVD [ft]	Comment
16.00	0.000	177.320	16.00	Tie-On
116.00	0.100	177.320	116.00	Begin GYRO Surveys
876.00	1.830	171.040	875.88	Tie-Into GYRO Surveys
977.00	1.740	174.000	976.84	Begin BHI MWD Surveys
7761.00	86.196	178.292	7273.06	7" Casing Point
11806.00	88.270	178.370	7270.20	Last BHI MWD Survey
11877.00	88.270	178.370	7272.34	Projection to Bit