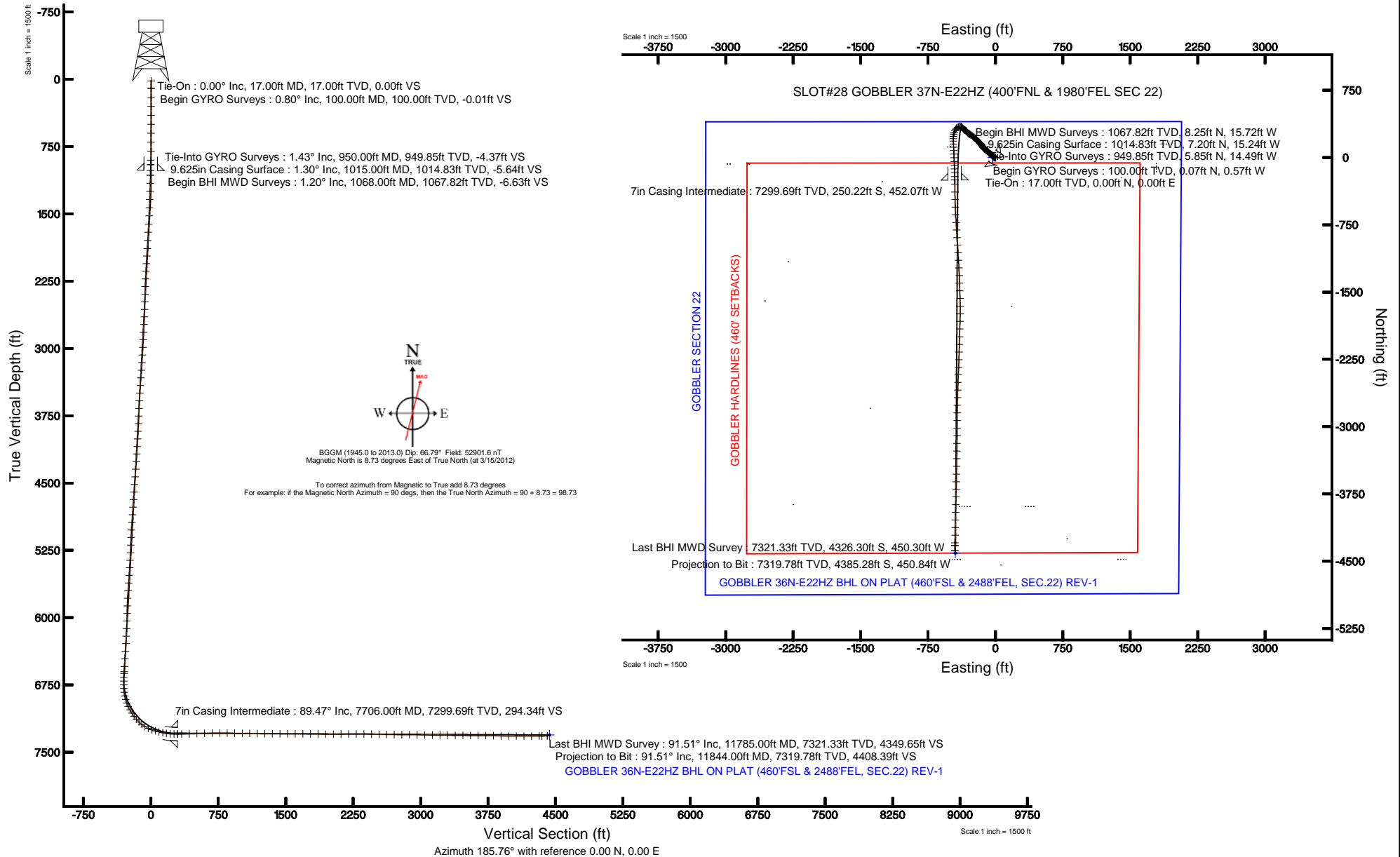


KERR-MCGEE OIL & GAS ONSHORE LP

Location: COLORADO Slot: SLOT#25 GOBBLER 36N-E22HZ (400'FNL & 2070'FEL, SEC.22)
 Field: WELD COUNTY (KERR MCGEE) Well: GOBBLER 36N-E22HZ
 Facility: SEC.22-T2N-R66W Wellbore: GOBBLER 36N-E22HZ PWB

Plot reference wellpath is GOBBLER 36N-E22HZ (REV-B.1) PWP	
True vertical depths are referenced to XTREME 6 (RKB)	Grid System: NAD83 / Lambert Colorado SP, Northern Zone (601), US feet
Measured depths are referenced to XTREME 6 (RKB)	North Reference: True north
XTREME 6 (RKB) to Mean Sea Level: 5070 feet	Scale: True distance
Mean Sea Level to Mud line (At Slot: SLOT#25 GOBBLER 36N-E22HZ (400'FNL & 2070'FEL, SEC.22)): 0 feet	Depths are in feet
Coordinates are in feet referenced to Slot	Created by: wilsje02 on 3/23/2012





Actual Wellpath Report

GOBBLER 36N-E22HZ AWP

Page 1 of 6



REFERENCE WELLPATH IDENTIFICATION

Operator	KERR-MCGEE OIL & GAS ONSHORE LP	Slot	SLOT#25 GOBBLER 36N-E22HZ (400'FNL & 2070'FEL, SEC.22)
Area	COLORADO	Well	GOBBLER 36N-E22HZ
Field	WELD COUNTY (KERR MCGEE)	Wellbore	GOBBLER 36N-E22HZ AWB
Facility	SEC.22-T2N-R66W		

REPORT SETUP INFORMATION

Projection System	NAD83 / Lambert Colorado SP, Northern Zone (501), US feet	Software System	WellArchitect® 3.0.2
North Reference	True	User	Wilsjef02
Scale	0.999959	Report Generated	3/23/2012 at 09:28:59
Convergence at slot	0.48° East	Database/Source file	WellArchitectDB/GOBBLER_36N-E22HZ_AWB.xml

WELLPATH LOCATION

	Local coordinates		Grid coordinates		Geographic coordinates	
	North[ft]	East[ft]	Easting[US ft]	Northing[US ft]	Latitude	Longitude
Slot Location	71.49	2753.29	3206553.47	1290992.79	40°07'47.305"N	104°45'40.676"W
Facility Reference Pt			3203800.98	1290898.68	40°07'46.600"N	104°46'16.122"W
Field Reference Pt			3197771.84	1268891.29	40°04'09.600"N	104°47'36.000"W

WELLPATH DATUM

Calculation method	Minimum curvature	XTREME 6 (RKB) to Facility Vertical Datum	5070.00ft
Horizontal Reference Pt	Slot	XTREME 6 (RKB) to Mean Sea Level	5070.00ft
Vertical Reference Pt	XTREME 6 (RKB)	XTREME 6 (RKB) to Mud Line at Slot (SLOT#25 GOBBLER 36N-E22HZ (400'FNL & 2070'FEL, SEC.22))	5070.00ft
MD Reference Pt	XTREME 6 (RKB)	Section Origin	N 0.00, E 0.00 ft
Field Vertical Reference	Mean Sea Level	Section Azimuth	185.76°



Actual Wellpath Report

GOBBLER 36N-E22HZ AWP

Page 2 of 6



REFERENCE WELLPATH IDENTIFICATION				
Operator	KERR-MCGEE OIL & GAS ONSHORE LP		Slot	SLOT#25 GOBBLER 36N-E22HZ (400'FNL & 2070'FEL, SEC.22)
Area	COLORADO		Well	GOBBLER 36N-E22HZ
Field	WELD COUNTY (KERR MCGEE)		Wellbore	GOBBLER 36N-E22HZ AWB
Facility	SEC.22-T2N-R66W			

WELLPATH DATA (154 stations) † = interpolated/extrapolated station

MD [ft]	Inclination [°]	Azimuth [°]	TVD [ft]	Vert Sect [ft]	North [ft]	East [ft]	Latitude	Longitude	DLS [°/100ft]	Comments
0.00†	0.000	277.210	0.00	0.00	0.00	0.00	40°07'47.305"N	104°45'40.676"W	0.00	
17.00	0.000	277.210	17.00	0.00	0.00	0.00	40°07'47.305"N	104°45'40.676"W	0.00	Tie-On
100.00	0.800	277.210	100.00	-0.01	0.07	-0.57	40°07'47.306"N	104°45'40.683"W	0.96	Begin GYRO Surveys
200.00	0.880	272.480	199.99	0.01	0.19	-2.03	40°07'47.307"N	104°45'40.702"W	0.11	
300.00	0.960	277.080	299.97	0.04	0.33	-3.63	40°07'47.308"N	104°45'40.723"W	0.11	
400.00	0.970	276.830	399.96	0.00	0.53	-5.30	40°07'47.310"N	104°45'40.744"W	0.01	
500.00	1.020	284.970	499.94	-0.16	0.86	-7.01	40°07'47.314"N	104°45'40.766"W	0.15	
600.00	1.140	299.920	599.93	-0.71	1.59	-8.73	40°07'47.321"N	104°45'40.788"W	0.31	
700.00	1.020	297.520	699.91	-1.44	2.50	-10.38	40°07'47.330"N	104°45'40.810"W	0.13	
800.00	1.340	308.140	799.89	-2.40	3.63	-12.09	40°07'47.341"N	104°45'40.832"W	0.39	
900.00	1.150	309.790	899.86	-3.59	5.00	-13.78	40°07'47.354"N	104°45'40.853"W	0.19	
950.00	1.430	328.910	949.85	-4.37	5.85	-14.49	40°07'47.363"N	104°45'40.862"W	1.02	Tie-Into GYRO Surveys
1068.00	1.200	337.260	1067.82	-6.63	8.25	-15.72	40°07'47.387"N	104°45'40.878"W	0.25	Begin BHI MWD Surveys
1158.00	2.540	315.140	1157.77	-8.73	10.53	-17.50	40°07'47.409"N	104°45'40.901"W	1.66	
1249.00	3.550	314.010	1248.64	-11.75	13.92	-20.94	40°07'47.443"N	104°45'40.946"W	1.11	
1340.00	3.200	323.340	1339.48	-15.37	17.92	-24.49	40°07'47.482"N	104°45'40.991"W	0.71	
1431.00	4.590	302.660	1430.28	-18.89	21.92	-29.07	40°07'47.522"N	104°45'41.050"W	2.15	
1523.00	5.790	301.410	1521.90	-22.56	26.32	-36.13	40°07'47.565"N	104°45'41.141"W	1.31	
1615.00	5.680	304.410	1613.44	-26.76	31.32	-43.85	40°07'47.614"N	104°45'41.240"W	0.35	
1707.00	6.200	303.160	1704.94	-31.23	36.61	-51.76	40°07'47.667"N	104°45'41.342"W	0.58	
1798.00	7.030	303.840	1795.34	-36.11	42.39	-60.50	40°07'47.724"N	104°45'41.455"W	0.92	
1889.00	5.850	312.730	1885.76	-41.52	48.64	-68.53	40°07'47.786"N	104°45'41.558"W	1.69	
1974.00	5.280	318.580	1970.36	-46.78	54.52	-74.30	40°07'47.844"N	104°45'41.633"W	0.95	
2059.00	4.320	326.030	2055.06	-51.90	60.10	-78.68	40°07'47.899"N	104°45'41.689"W	1.34	
2144.00	4.280	326.900	2139.83	-56.83	65.42	-82.20	40°07'47.951"N	104°45'41.734"W	0.09	
2229.00	4.100	324.360	2224.60	-61.58	70.54	-85.70	40°07'48.002"N	104°45'41.779"W	0.30	
2314.00	3.730	309.150	2309.40	-65.38	74.76	-89.62	40°07'48.044"N	104°45'41.830"W	1.29	
2400.00	3.240	292.290	2395.25	-67.61	77.45	-94.03	40°07'48.070"N	104°45'41.887"W	1.31	
2485.00	4.510	298.110	2480.05	-69.57	79.93	-99.21	40°07'48.095"N	104°45'41.953"W	1.56	
2570.00	4.480	298.350	2564.79	-72.12	83.08	-105.07	40°07'48.126"N	104°45'42.029"W	0.04	
2654.00	5.150	304.010	2648.49	-75.16	86.75	-111.09	40°07'48.162"N	104°45'42.106"W	0.98	
2739.00	4.630	310.820	2733.18	-78.94	91.12	-116.85	40°07'48.206"N	104°45'42.180"W	0.92	
2825.00	4.290	313.280	2818.92	-82.89	95.60	-121.81	40°07'48.250"N	104°45'42.244"W	0.45	
2910.00	4.130	308.220	2903.69	-86.47	99.67	-126.53	40°07'48.290"N	104°45'42.305"W	0.48	
2995.00	4.470	325.490	2988.46	-90.64	104.30	-130.81	40°07'48.336"N	104°45'42.360"W	1.57	
3080.00	4.940	325.940	3073.17	-95.98	110.06	-134.74	40°07'48.393"N	104°45'42.411"W	0.55	
3166.00	4.810	330.330	3158.86	-101.76	116.26	-138.60	40°07'48.454"N	104°45'42.460"W	0.46	
3251.00	4.830	325.640	3243.56	-107.40	122.31	-142.38	40°07'48.514"N	104°45'42.509"W	0.46	
3336.00	5.680	328.490	3328.20	-113.48	128.85	-146.60	40°07'48.578"N	104°45'42.563"W	1.05	
3421.00	5.130	327.730	3412.82	-119.82	135.65	-150.83	40°07'48.645"N	104°45'42.618"W	0.65	
3507.00	4.830	325.530	3498.50	-125.62	141.88	-154.93	40°07'48.707"N	104°45'42.671"W	0.41	
3592.00	4.590	321.420	3583.21	-130.78	147.49	-159.08	40°07'48.763"N	104°45'42.724"W	0.49	
3677.00	2.800	332.700	3668.03	-134.95	152.00	-162.15	40°07'48.807"N	104°45'42.764"W	2.26	
3762.00	2.590	311.490	3752.94	-137.81	155.11	-164.54	40°07'48.838"N	104°45'42.794"W	1.19	
3847.00	3.550	303.920	3837.82	-140.18	157.85	-168.16	40°07'48.865"N	104°45'42.841"W	1.22	
3933.00	4.970	313.760	3923.58	-143.73	161.92	-173.06	40°07'48.905"N	104°45'42.904"W	1.85	
4018.00	5.730	314.560	4008.21	-148.65	167.44	-178.75	40°07'48.960"N	104°45'42.977"W	0.90	
4103.00	5.140	314.050	4092.83	-153.67	173.07	-184.51	40°07'49.015"N	104°45'43.051"W	0.70	
4188.00	6.460	313.870	4177.39	-158.98	179.03	-190.69	40°07'49.074"N	104°45'43.131"W	1.55	
4273.00	6.670	310.740	4261.83	-164.76	185.56	-197.88	40°07'49.139"N	104°45'43.224"W	0.49	
4358.00	6.930	313.270	4346.23	-170.72	192.30	-205.35	40°07'49.205"N	104°45'43.320"W	0.47	
4443.00	6.280	319.510	4430.67	-177.05	199.35	-212.11	40°07'49.275"N	104°45'43.407"W	1.14	
4529.00	5.350	331.000	4516.23	-183.60	206.43	-217.10	40°07'49.345"N	104°45'43.471"W	1.73	
4614.00	5.520	323.450	4600.85	-189.88	213.18	-221.46	40°07'49.412"N	104°45'43.527"W	0.86	
4699.00	6.400	308.150	4685.39	-195.44	219.40	-227.62	40°07'49.473"N	104°45'43.606"W	2.13	
4784.00	6.760	306.390	4769.83	-200.53	225.29	-235.37	40°07'49.531"N	104°45'43.706"W	0.49	
4870.00	7.110	311.550	4855.21	-206.22	231.82	-243.43	40°07'49.596"N	104°45'43.810"W	0.83	
4955.00	7.580	313.760	4939.51	-212.75	239.19	-251.42	40°07'49.669"N	104°45'43.913"W	0.65	
5040.00	6.520	303.170	5023.87	-218.42	245.71	-259.51	40°07'49.733"N	104°45'44.017"W	1.97	
5125.00	6.460	297.650	5108.32	-222.42	250.57	-267.78	40°07'49.781"N	104°45'44.123"W	0.74	



Actual Wellpath Report

GOBBLER 36N-E22HZ AWP



REFERENCE WELLPATH IDENTIFICATION

Operator	KERR-MCGEE OIL & GAS ONSHORE LP	Slot	SLOT#25 GOBBLER 36N-E22HZ (400'FNL & 2070'FEL, SEC.22)
Area	COLORADO	Well	GOBBLER 36N-E22HZ
Field	WELD COUNTY (KERR MCGEE)	Wellbore	GOBBLER 36N-E22HZ AWB
Facility	SEC.22-T2N-R66W		

WELLPATH DATA (154 stations) † = interpolated/extrapolated station

MD [ft]	Inclination [°]	Azimuth [°]	TVD [ft]	Vert Sect [ft]	North [ft]	East [ft]	Latitude	Longitude	DLS [°/100ft]	Comments
5210.00	6.460	298.760	5192.78	-226.07	255.09	-276.21	40°07'49.826"N	104°45'44.232"W	0.15	
5295.00	6.710	299.090	5277.22	-229.91	259.80	-284.74	40°07'49.872"N	104°45'44.342"W	0.30	
5381.00	6.850	300.400	5362.62	-234.04	264.84	-293.55	40°07'49.922"N	104°45'44.455"W	0.24	
5464.00	5.830	307.750	5445.11	-238.33	269.93	-301.16	40°07'49.972"N	104°45'44.553"W	1.57	
5549.00	5.490	315.280	5529.70	-243.21	275.46	-307.43	40°07'50.027"N	104°45'44.634"W	0.96	
5634.00	5.620	321.140	5614.30	-248.76	281.59	-312.90	40°07'50.088"N	104°45'44.704"W	0.68	
5720.00	5.740	328.590	5699.88	-255.18	288.54	-317.79	40°07'50.156"N	104°45'44.767"W	0.87	
5805.00	4.550	321.880	5784.54	-261.00	294.82	-322.08	40°07'50.218"N	104°45'44.823"W	1.57	
5890.00	3.960	300.260	5869.31	-264.65	298.95	-326.70	40°07'50.259"N	104°45'44.882"W	2.00	
5975.00	3.660	292.200	5954.12	-266.63	301.45	-331.75	40°07'50.284"N	104°45'44.947"W	0.72	
6060.00	4.200	299.050	6038.92	-268.63	303.99	-336.98	40°07'50.309"N	104°45'45.014"W	0.84	
6145.00	5.240	305.780	6123.63	-271.80	307.77	-342.85	40°07'50.346"N	104°45'45.090"W	1.38	
6229.00	5.510	310.220	6207.26	-276.00	312.62	-349.04	40°07'50.394"N	104°45'45.170"W	0.59	
6314.00	5.310	311.530	6291.89	-280.61	317.86	-355.10	40°07'50.446"N	104°45'45.248"W	0.28	
6399.00	5.500	315.650	6376.51	-285.52	323.38	-360.89	40°07'50.501"N	104°45'45.322"W	0.51	
6483.00	5.610	320.100	6460.11	-290.97	329.41	-366.34	40°07'50.560"N	104°45'45.392"W	0.53	
6569.00	5.190	320.320	6545.73	-296.64	335.63	-371.52	40°07'50.622"N	104°45'45.459"W	0.49	
6627.00	4.923	320.410	6603.51	-300.23	339.57	-374.78	40°07'50.661"N	104°45'45.501"W	0.46	
6647.00	4.950	321.870	6623.43	-301.46	340.91	-375.86	40°07'50.674"N	104°45'45.515"W	0.64	
6690.00	5.480	301.930	6666.26	-303.70	343.45	-378.75	40°07'50.699"N	104°45'45.552"W	4.37	
6732.00	8.270	278.330	6707.96	-304.72	344.95	-383.44	40°07'50.714"N	104°45'45.613"W	9.32	
6775.00	11.560	272.720	6750.31	-304.63	345.60	-390.81	40°07'50.720"N	104°45'45.707"W	7.97	
6817.00	13.460	262.020	6791.32	-303.24	345.12	-399.85	40°07'50.716"N	104°45'45.824"W	7.12	
6860.00	15.760	247.220	6832.94	-299.26	342.17	-410.20	40°07'50.686"N	104°45'45.957"W	10.16	
6902.00	18.710	238.100	6873.06	-292.42	336.40	-421.18	40°07'50.629"N	104°45'46.098"W	9.51	
6945.00	20.550	225.620	6913.57	-282.41	327.47	-432.44	40°07'50.541"N	104°45'46.243"W	10.62	
6988.00	22.900	213.410	6953.54	-269.19	315.20	-442.44	40°07'50.420"N	104°45'46.372"W	11.82	
7030.00	25.700	204.590	6991.83	-253.33	300.09	-450.74	40°07'50.270"N	104°45'46.479"W	10.90	
7073.00	29.550	200.330	7029.92	-234.23	281.66	-458.31	40°07'50.088"N	104°45'46.576"W	10.06	
7115.00	33.050	193.530	7065.81	-212.85	260.80	-464.59	40°07'49.882"N	104°45'46.657"W	11.83	
7158.00	36.290	185.960	7101.19	-188.49	236.72	-468.65	40°07'49.644"N	104°45'46.710"W	12.52	
7200.00	40.350	177.240	7134.16	-162.58	210.75	-469.29	40°07'49.388"N	104°45'46.718"W	16.08	
7241.00	45.120	176.730	7164.27	-135.09	182.97	-467.82	40°07'49.113"N	104°45'46.699"W	11.66	
7284.00	52.160	177.330	7192.66	-103.21	150.76	-466.16	40°07'48.795"N	104°45'46.677"W	16.41	
7326.00	58.230	178.150	7216.62	-69.08	116.32	-464.81	40°07'48.454"N	104°45'46.660"W	14.54	
7369.00	65.700	177.600	7236.82	-31.51	78.42	-463.40	40°07'48.080"N	104°45'46.642"W	17.41	
7411.00	72.390	177.370	7251.83	7.28	39.26	-461.68	40°07'47.693"N	104°45'46.620"W	15.94	
7454.00	74.310	177.500	7264.15	48.04	-1.90	-459.83	40°07'47.286"N	104°45'46.596"W	4.47	
7497.00	75.800	177.680	7275.24	89.17	-43.40	-458.09	40°07'46.876"N	104°45'46.573"W	3.49	
7539.00	78.420	176.830	7284.61	129.65	-84.29	-456.12	40°07'46.472"N	104°45'46.548"W	6.54	
7582.00	81.470	178.290	7292.12	171.55	-126.59	-454.32	40°07'46.054"N	104°45'46.525"W	7.84	
7624.00	85.500	178.830	7296.88	212.95	-168.30	-453.28	40°07'45.642"N	104°45'46.511"W	9.68	
7667.00	88.680	179.280	7299.06	255.59	-211.23	-452.57	40°07'45.218"N	104°45'46.502"W	7.47	
7706.00†	89.474	179.266	7299.69	294.34	-250.22	-452.07	40°07'44.832"N	104°45'46.496"W	2.04	7" Casing Point
7753.00	90.430	179.250	7299.73	341.03	-297.22	-451.47	40°07'44.368"N	104°45'46.488"W	2.04	
7839.00	91.880	179.190	7298.00	426.45	-383.19	-450.29	40°07'43.518"N	104°45'46.473"W	1.69	
7924.00	92.280	178.430	7294.91	510.77	-468.11	-448.53	40°07'42.679"N	104°45'46.450"W	1.01	
8009.00	91.760	178.290	7291.92	595.01	-553.03	-446.10	40°07'41.840"N	104°45'46.419"W	0.63	
8094.00	90.580	176.850	7290.18	679.12	-637.93	-442.50	40°07'41.001"N	104°45'46.373"W	2.19	
8180.00	90.220	175.870	7289.58	763.96	-723.75	-437.04	40°07'40.153"N	104°45'46.302"W	1.21	
8265.00	89.350	177.650	7289.90	847.91	-808.61	-432.23	40°07'39.314"N	104°45'46.240"W	2.33	
8348.00	89.550	175.330	7290.70	929.82	-891.45	-427.15	40°07'38.496"N	104°45'46.175"W	2.81	
8433.00	89.880	176.080	7291.12	1013.51	-976.20	-420.79	40°07'37.658"N	104°45'46.093"W	0.96	
8518.00	88.030	175.920	7292.67	1097.26	-1060.98	-414.86	40°07'36.820"N	104°45'46.017"W	2.18	
8603.00	88.680	177.170	7295.11	1181.13	-1145.79	-409.74	40°07'35.982"N	104°45'45.951"W	1.66	
8688.00	89.170	176.800	7296.70	1265.12	-1230.66	-405.27	40°07'35.144"N	104°45'45.893"W	0.72	
8774.00	89.720	178.420	7297.54	1350.24	-1316.57	-401.68	40°07'34.294"N	104°45'45.847"W	1.99	
8859.00	90.340	178.460	7297.49	1434.55	-1401.54	-399.37	40°07'33.455"N	104°45'45.817"W	0.73	
8944.00	90.710	177.700	7296.71	1518.78	-1486.49	-396.52	40°07'32.615"N	104°45'45.781"W	0.99	
9029.00	89.820	178.530	7296.32	1603.03	-1571.44	-393.72	40°07'31.776"N	104°45'45.745"W	1.43	



Actual Wellpath Report

GOBBLER 36N-E22HZ AWP

Page 4 of 6



REFERENCE WELLPATH IDENTIFICATION

Operator	KERR-MCGEE OIL & GAS ONSHORE LP	Slot	SLOT#25 GOBBLER 36N-E22HZ (400'FNL & 2070'FEL, SEC.22)
Area	COLORADO	Well	GOBBLER 36N-E22HZ
Field	WELD COUNTY (KERR MCGEE)	Wellbore	GOBBLER 36N-E22HZ AWB
Facility	SEC.22-T2N-R66W		

WELLPATH DATA (154 stations)

MD [ft]	Inclination [°]	Azimuth [°]	TVD [ft]	Vert Sect [ft]	North [ft]	East [ft]	Latitude	Longitude	DLS [°/100ft]	Comments
9115.00	88.830	179.110	7297.33	1688.39	-1657.41	-391.95	40°07'30.926"N	104°45'45.722"W	1.33	
9200.00	89.140	180.700	7298.84	1772.93	-1742.40	-391.81	40°07'30.086"N	104°45'45.720"W	1.91	
9285.00	88.650	181.860	7300.48	1857.65	-1827.36	-393.71	40°07'29.247"N	104°45'45.744"W	1.48	
9370.00	89.020	181.920	7302.21	1942.44	-1912.30	-396.51	40°07'28.407"N	104°45'45.780"W	0.44	
9456.00	90.650	181.490	7302.46	2028.22	-1998.25	-399.07	40°07'27.558"N	104°45'45.813"W	1.96	
9541.00	91.390	181.070	7300.94	2112.95	-2083.22	-400.97	40°07'26.718"N	104°45'45.838"W	1.00	
9626.00	90.620	181.840	7299.45	2197.69	-2168.18	-403.13	40°07'25.879"N	104°45'45.865"W	1.28	
9711.00	89.600	181.980	7299.29	2282.50	-2253.13	-405.96	40°07'25.039"N	104°45'45.902"W	1.21	
9796.00	89.420	182.510	7300.02	2367.34	-2338.06	-409.29	40°07'24.200"N	104°45'45.945"W	0.66	
9881.00	89.450	182.180	7300.85	2452.18	-2422.98	-412.77	40°07'23.361"N	104°45'45.989"W	0.39	
9966.00	88.370	182.110	7302.47	2536.99	-2507.91	-415.95	40°07'22.522"N	104°45'46.030"W	1.27	
10050.00	89.080	181.910	7304.34	2620.79	-2591.84	-418.90	40°07'21.692"N	104°45'46.068"W	0.88	
10135.00	89.230	181.470	7305.59	2705.57	-2676.79	-421.40	40°07'20.853"N	104°45'46.101"W	0.55	
10220.00	90.340	181.140	7305.91	2790.31	-2761.76	-423.34	40°07'20.013"N	104°45'46.125"W	1.36	
10306.00	88.830	180.530	7306.53	2875.99	-2847.75	-424.59	40°07'19.163"N	104°45'46.142"W	1.89	
10391.00	89.170	179.820	7308.02	2960.57	-2932.74	-424.85	40°07'18.323"N	104°45'46.145"W	0.93	
10476.00	88.920	180.940	7309.43	3045.18	-3017.72	-425.41	40°07'17.484"N	104°45'46.152"W	1.35	
10561.00	89.380	180.610	7310.70	3129.85	-3102.70	-426.56	40°07'16.644"N	104°45'46.167"W	0.67	
10647.00	88.950	181.040	7311.95	3215.52	-3188.69	-427.80	40°07'15.794"N	104°45'46.183"W	0.71	
10732.00	89.780	180.600	7312.89	3300.20	-3273.67	-429.02	40°07'14.954"N	104°45'46.198"W	1.11	
10817.00	88.830	180.250	7313.92	3384.82	-3358.66	-429.65	40°07'14.114"N	104°45'46.207"W	1.19	
10902.00	89.320	181.580	7315.29	3469.51	-3443.64	-431.01	40°07'13.275"N	104°45'46.224"W	1.67	
10988.00	89.570	181.240	7316.13	3555.26	-3529.61	-433.12	40°07'12.425"N	104°45'46.251"W	0.49	
11073.00	90.090	180.510	7316.38	3639.95	-3614.60	-434.42	40°07'11.585"N	104°45'46.268"W	1.05	
11158.00	89.720	181.200	7316.52	3724.63	-3699.59	-435.69	40°07'10.745"N	104°45'46.284"W	0.92	
11243.00	88.150	181.980	7318.10	3809.39	-3784.53	-438.05	40°07'09.906"N	104°45'46.315"W	2.06	
11329.00	88.650	181.890	7320.50	3895.17	-3870.45	-440.95	40°07'09.057"N	104°45'46.352"W	0.59	
11414.00	89.080	180.960	7322.19	3979.90	-3955.41	-443.06	40°07'08.217"N	104°45'46.379"W	1.21	
11499.00	90.150	181.900	7322.76	4064.66	-4040.38	-445.18	40°07'07.378"N	104°45'46.406"W	1.68	
11584.00	89.820	181.180	7322.78	4149.43	-4125.35	-447.47	40°07'06.538"N	104°45'46.436"W	0.93	
11669.00	89.750	180.970	7323.10	4234.14	-4210.33	-449.06	40°07'05.698"N	104°45'46.456"W	0.26	
11755.00	91.540	180.370	7322.13	4319.79	-4296.31	-450.07	40°07'04.848"N	104°45'46.469"W	2.20	
11785.00	91.510	180.520	7321.33	4349.65	-4326.30	-450.30	40°07'04.552"N	104°45'46.472"W	0.51	Last BHI MWD Survey
11844.00	91.510	180.520	7319.78	4408.39	-4385.28	-450.84	40°07'03.969"N	104°45'46.479"W	0.00	Projection to Bit

HOLE & CASING SECTIONS - Ref Wellbore: GOBBLER 36N-E22HZ AWB Ref Wellpath: GOBBLER 36N-E22HZ AWP

String/Diameter	Start MD [ft]	End MD [ft]	Interval [ft]	Start TVD [ft]	End TVD [ft]	Start N/S [ft]	Start E/W [ft]	End N/S [ft]	End E/W [ft]
13.5in Open Hole	17.00	1015.00	998.00	17.00	1014.83	0.00	0.00	7.20	-15.24
9.625in Casing Surface	17.00	1015.00	998.00	17.00	1014.83	0.00	0.00	7.20	-15.24
8.75in Open Hole	1015.00	7731.00	6716.00	1014.83	7299.81	7.20	-15.24	-275.22	-451.75
7in Casing Intermediate	17.00	7706.00	7689.00	17.00	7299.69	0.00	0.00	-250.22	-452.07
6.125in Open Hole	7706.00	11844.00	4138.00	7299.69	7319.78	-250.22	-452.07	-4385.28	-450.84



Actual Wellpath Report

GOBBLER 36N-E22HZ AWP

Page 5 of 6



REFERENCE WELLPATH IDENTIFICATION			
Operator	KERR-MCGEE OIL & GAS ONSHORE LP	Slot	SLOT#25 GOBBLER 36N-E22HZ (400'FNL & 2070'FEL, SEC.22)
Area	COLORADO	Well	GOBBLER 36N-E22HZ
Field	WELD COUNTY (KERR MCGEE)	Wellbore	GOBBLER 36N-E22HZ AWB
Facility	SEC.22-T2N-R66W		

TARGETS									
Name	MD [ft]	TVD [ft]	North [ft]	East [ft]	Grid East [US ft]	Grid North [US ft]	Latitude	Longitude	Shape
GOBBLER SECTION 22		0.00	0.02	-30.23	3206523.24	1290992.56	40°07'47.305"N	104°45'41.065"W	polygon
GOBBLER 36N-E22HZ BHL ON PLAT (460'FSL & 2488'FEL, SEC.22) REV-1		7310.00	-4410.90	-445.01	3206145.24	1286578.53	40°07'03.716"N	104°45'46.404"W	point
GOBBLER HARDLINES (460' SETBACKS)		7400.00	0.02	-30.23	3206523.24	1290992.56	40°07'47.305"N	104°45'41.065"W	polygon

WELLPATH COMPOSITION - Ref Wellbore: GOBBLER 36N-E22HZ AWB Ref Wellpath: GOBBLER 36N-E22HZ AWP					
Start MD [ft]	End MD [ft]	Positional Uncertainty Model	Log Name/Comment	Wellbore	
17.00	950.00	Gyrodata standard - Continuous gyro	GYRODATA SURVEYS 13 1/2" HOLE <100-950>	GOBBLER 36N-E22HZ AWB	
950.00	7667.00	NaviTrak (Standard)	BHI MWD SURVEYS 8 3/4" HOLE <1068-7667>	GOBBLER 36N-E22HZ AWB	
7667.00	11785.00	OnTrak (Standard)	BHI MWD SURVEYS 6 1/8" HOLE <7753-11785>	GOBBLER 36N-E22HZ AWB	
11785.00	11844.00	Blind Drilling (std)	Projection to bit	GOBBLER 36N-E22HZ AWB	



Actual Wellpath Report

GOBBLER 36N-E22HZ AWP

Page 6 of 6



REFERENCE WELLPATH IDENTIFICATION

Operator	KERR-MCGEE OIL & GAS ONSHORE LP	Slot	SLOT#25 GOBBLER 36N-E22HZ (400'FNL & 2070'FEL, SEC.22)
Area	COLORADO	Well	GOBBLER 36N-E22HZ
Field	WELD COUNTY (KERR MCGEE)	Wellbore	GOBBLER 36N-E22HZ AWB
Facility	SEC.22-T2N-R66W		

WELLPATH COMMENTS

MD [ft]	Inclination [°]	Azimuth [°]	TVD [ft]	Comment
17.00	0.000	277.210	17.00	Tie-On
100.00	0.800	277.210	100.00	Begin GYRO Surveys
950.00	1.430	328.910	949.85	Tie-Into GYRO Surveys
1068.00	1.200	337.260	1067.82	Begin BHI MWD Surveys
7706.00	89.474	179.266	7299.69	7" Casing Point
11785.00	91.510	180.520	7321.33	Last BHI MWD Survey
11844.00	91.510	180.520	7319.78	Projection to Bit