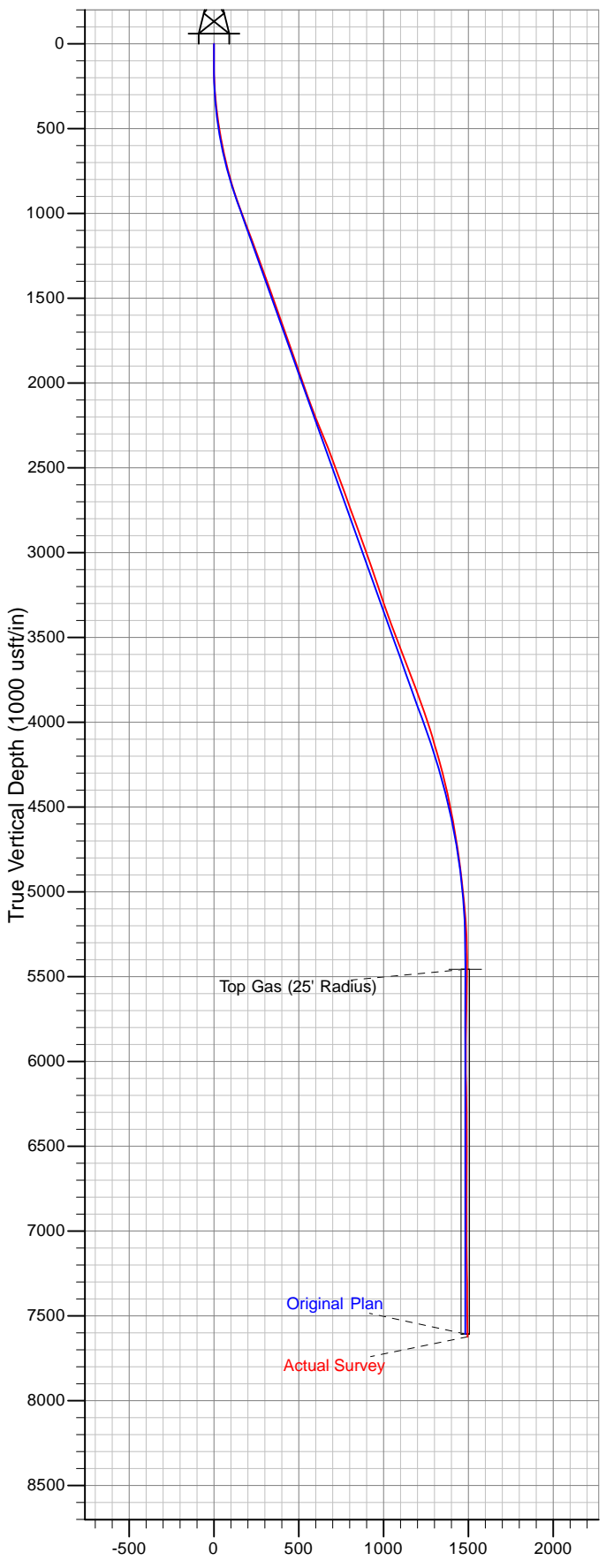
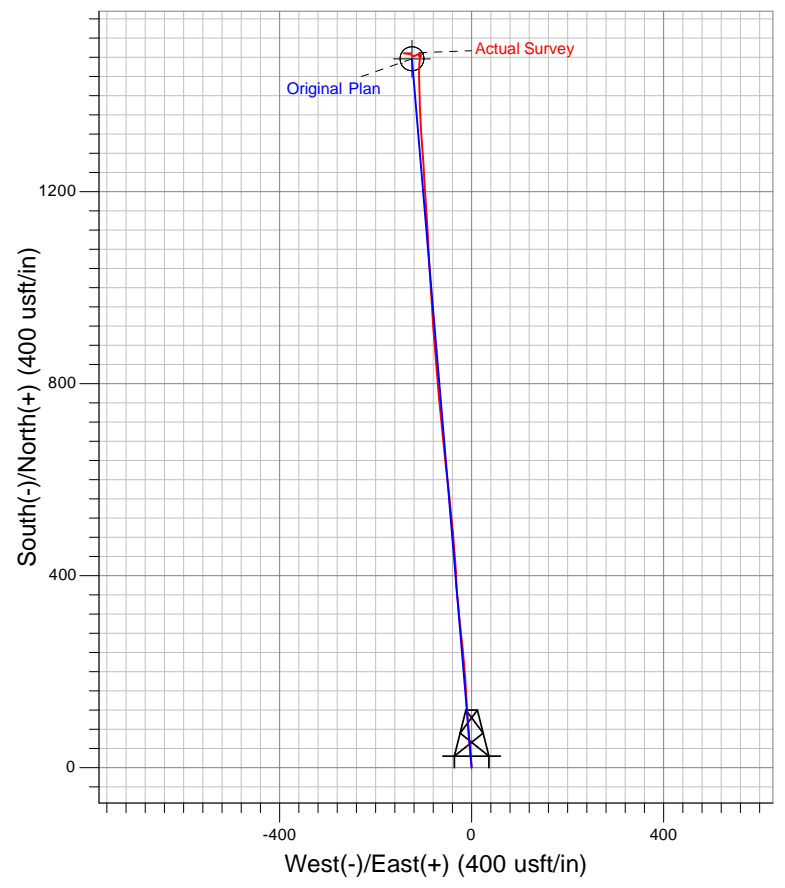




Well Name: PA 423-29  
 Surface Location: DOE 3-W-29 Pad  
 North American Datum 1983 , US State Plane 1983 . Colorado Central Zone  
 Ground Elevation: 5676.00  
 +N/-S    +E/-W    Northing    Easting    Latitude    Longitude    Slot  
 0.00    0.00    1613206.60    2288024.30    39.48988    -108.02305    A1  
 WELL @ 5702.00usft (Nabors 577 (26') kjs)



Vertical Section at 355.19° (1000 usft/in)



Azimuths to True North  
 Magnetic North: 10.28°

Magnetic Field  
 Strength: 52181.4snT  
 Dip Angle: 65.71°  
 Date: 2/2/2012  
 Model: IGRF2010