
WPX ENERGY ROCKY MOUNTAIN LLC-EBUS

**GM 524-14
GRAND VALLEY
Garfield County , Colorado**

Cement Surface Casing
20-Jan-2012

Post Job Summary

The Road to Excellence Starts with Safety

| | | | |
|---|------------------------------|--|--------------------------------|
| Sold To #: 300721 | Ship To #: 2896836 | Quote #: | Sales Order #: 9134507 |
| Customer: WPX ENERGY ROCKY MOUNTAIN LLC-EBUS | | Customer Rep: Towers, Ron | |
| Well Name: GM | | Well #: 524-14 | API/UWI #: 05-045-20828 |
| Field: GRAND VALLEY | City (SAP): PARACHUTE | County/Parish: Garfield | State: Colorado |
| Legal Description: | | | |
| Lat: N 39.427 deg. OR N 39 deg. 25 min. 38.564 secs. | | Long: W 108.082 deg. OR W -109 deg. 55 min. 5.984 secs. | |
| Contractor: H&P 271 | | Rig/Platform Name/Num: H&P 271 | |
| Job Purpose: Cement Surface Casing | | | Ticket Amount: |
| Well Type: Development Well | | Job Type: Cement Surface Casing | |
| Sales Person: SCOTT, KYLE | | Srvc Supervisor: REEVES, BRANDON | MBU ID Emp #: 287883 |

| Activity Description | Date/Time | Cht # | Rate bbl/min | Volume bbl | | Pressure psig | | Comments |
|--|---------------------|-------|--------------|------------|-------|---------------|--------|---|
| | | | | Stage | Total | Tubing | Casing | |
| Call Out | 01/20/2012 05:00 | | | | | | | |
| Pre-Convoy Safety Meeting | 01/20/2012 06:30 | | | | | | | |
| Arrive at Location from Service Center | 01/20/2012 08:00 | | | | | | | |
| Assessment Of Location Safety Meeting | 01/20/2012 14:00 | | | | | | | |
| Other | 01/20/2012 14:20 | | | | | | | SPOT EQUIPMENT |
| Pre-Rig Up Safety Meeting | 01/20/2012 14:35 | | | | | | | |
| Rig-Up Equipment | 01/20/2012 14:45 | | | | | | | |
| Pre-Job Safety Meeting | 01/20/2012 17:15 | | | | | | | |
| Start Job | 01/20/2012 17:28 | | | | | | | TD-1350' TP-1333' SJ-44' MW-9.9# CASING-9 5/8" 32.3# HOLE-13 1/2" |
| Test Lines | 01/20/2012 17:30 | | | | | | 4050.0 | |
| Pump Spacer 1 | 01/20/2012 17:36 | | 4 | 20 | | | 100.0 | FRESH WATER SPACER |
| Pump Lead Cement | 01/20/2012 17:41 | | 8 | 76.3 | | | 340.0 | 180 SKS. @ 12.3# 2.38 YIELD 13.75 WRQ. |
| Pump Tail Cement | 01/20/2012 17:51 | | 8 | 60.1 | | | 350.0 | 160 SKS. @ 12.8# 2.11 YIELD 11.75 WRQ. |
| Drop Top Plug | 01/20/2012 18:03 | | | | | | | |
| Pump Displacement | 01/20/2012 18:04 | | 10 | | | | 580.0 | FRESH WATER DISPLACEMENT |
| Slow Rate | 01/20/2012 18:14 | | 2 | 91 | | | 285.0 | |

| Activity Description | Date/Time | Cht # | Rate bbl/min | Volume bbl | | Pressure psig | | Comments |
|----------------------|---------------------|-------|--------------|------------|-------|---------------|--------|--|
| | | | | Stage | Total | Tubing | Casing | |
| Bump Plug | 01/20/2012 18:18 | | 2 | 101 | | | 300.0 | PLUG LANDED AT 300 PSI. PRESSURED UP TO 870 PSI. |
| Check Floats | 01/20/2012 18:20 | | | | | | | FLOATS HELD |
| End Job | 01/20/2012 18:23 | | | | | | | WELL WAS CIRCULATED BEFORE STARTING THE JOB. GOOD CIRCULATION THROUGHOUT THE JOB. PIPE WAS NOT RECIPROCATED. CIRCULATED 22 BBLS. OF CEMENT TO SURFACE. |
| Rig-Down Equipment | 01/20/2012 18:45 | | | | | | | THANKS FOR USING HALLIBURTON. BRANDON REEVES AND CREW. |

The Road to Excellence Starts with Safety

| | | | |
|---|------------------------------|--|--------------------------------|
| Sold To #: 300721 | Ship To #: 2896836 | Quote #: | Sales Order #: 9134507 |
| Customer: WPX ENERGY ROCKY MOUNTAIN LLC-EBUS | | Customer Rep: Towers, Ron | |
| Well Name: GM | | Well #: 524-14 | API/UWI #: 05-045-20828 |
| Field: GRAND VALLEY | City (SAP): PARACHUTE | County/Parish: Garfield | State: Colorado |
| Lat: N 39.427 deg. OR N 39 deg. 25 min. 38.564 secs. | | Long: W 108.082 deg. OR W -109 deg. 55 min. 5.984 secs. | |
| Contractor: H&P 271 | | Rig/Platform Name/Num: H&P 271 | |
| Job Purpose: Cement Surface Casing | | | |
| Well Type: Development Well | | Job Type: Cement Surface Casing | |
| Sales Person: SCOTT, KYLE | | Srvc Supervisor: REEVES, BRANDON | MBU ID Emp #: 287883 |

Job Personnel

| HES Emp Name | Exp Hrs | Emp # | HES Emp Name | Exp Hrs | Emp # | HES Emp Name | Exp Hrs | Emp # |
|-----------------------|---------|--------|----------------------|---------|--------|-------------------|---------|--------|
| DOUT, JACOB J | 9.0 | 430298 | KUKUS, CHRISTOPHER A | 9.0 | 413952 | REEVES, BRANDON W | 9.0 | 287883 |
| SPARKS, CLIFFORD Paul | 9.0 | 502476 | | | | | | |

Equipment

| HES Unit # | Distance-1 way | HES Unit # | Distance-1 way | HES Unit # | Distance-1 way | HES Unit # | Distance-1 way |
|------------|----------------|------------|----------------|------------|----------------|------------|----------------|
| 10567589C | 60 mile | 10867425 | 60 mile | 10897891 | 60 mile | 10995027 | 60 mile |
| 11583931 | 60 mile | | | | | | |

Job Hours

| Date | On Location Hours | Operating Hours | Date | On Location Hours | Operating Hours | Date | On Location Hours | Operating Hours |
|------------|-------------------|-----------------|------|-------------------|-----------------|------|-------------------|-----------------|
| 01/20/2012 | 9 | 2 | | | | | | |

TOTAL Total is the sum of each column separately

Job

Job Times

| Formation Name | Top | Bottom | Called Out | Date | Time | Time Zone |
|-------------------------------|-------------|--------------------------|--------------------|----------------------|-----------------|-----------|
| Formation Depth (MD) | | | On Location | 20 - Jan - 2012 | 08:00 | MST |
| Form Type | | BHST | Job Started | 20 - Jan - 2012 | 00:00 | MST |
| Job depth MD | 1333. ft | Job Depth TVD | 1333. ft | Job Completed | 20 - Jan - 2012 | 00:00 |
| Water Depth | | Wk Ht Above Floor | 4. ft | Departed Loc | 20 - Jan - 2012 | 00:00 |
| Perforation Depth (MD) | <i>From</i> | <i>To</i> | | | | |

Well Data

| Description | New / Used | Max pressure psig | Size in | ID in | Weight lbm/ft | Thread | Grade | Top MD ft | Bottom MD ft | Top TVD ft | Bottom TVD ft |
|--|------------|-------------------|---------|-------|---------------|--------|-------|-----------|--------------|------------|---------------|
| Sales/Rental/3rd Party (HES) | | | | | | | | | | | |

| Description | Qty | Qty uom | Depth | Supplier |
|--|-----|---------|-------|----------|
| PLUG,CMTG,TOP,9 5/8,HWE,8.16 MIN/9.06 MA | 1 | EA | | |

Tools and Accessories

| Type | Size | Qty | Make | Depth | Type | Size | Qty | Make | Depth | Type | Size | Qty | Make |
|--------------|------|-----|------|-------|-------------|------|-----|------|-------|----------------|--------|-----|------|
| Guide Shoe | | | | | Packer | | | | | Top Plug | 9.625" | 1 | |
| Float Shoe | | | | | Bridge Plug | | | | | Bottom Plug | | | |
| Float Collar | | | | | Retainer | | | | | SSR plug set | | | |
| Insert Float | | | | | | | | | | Plug Container | 9.625" | 1 | |
| Stage Tool | | | | | | | | | | Centralizers | | | |

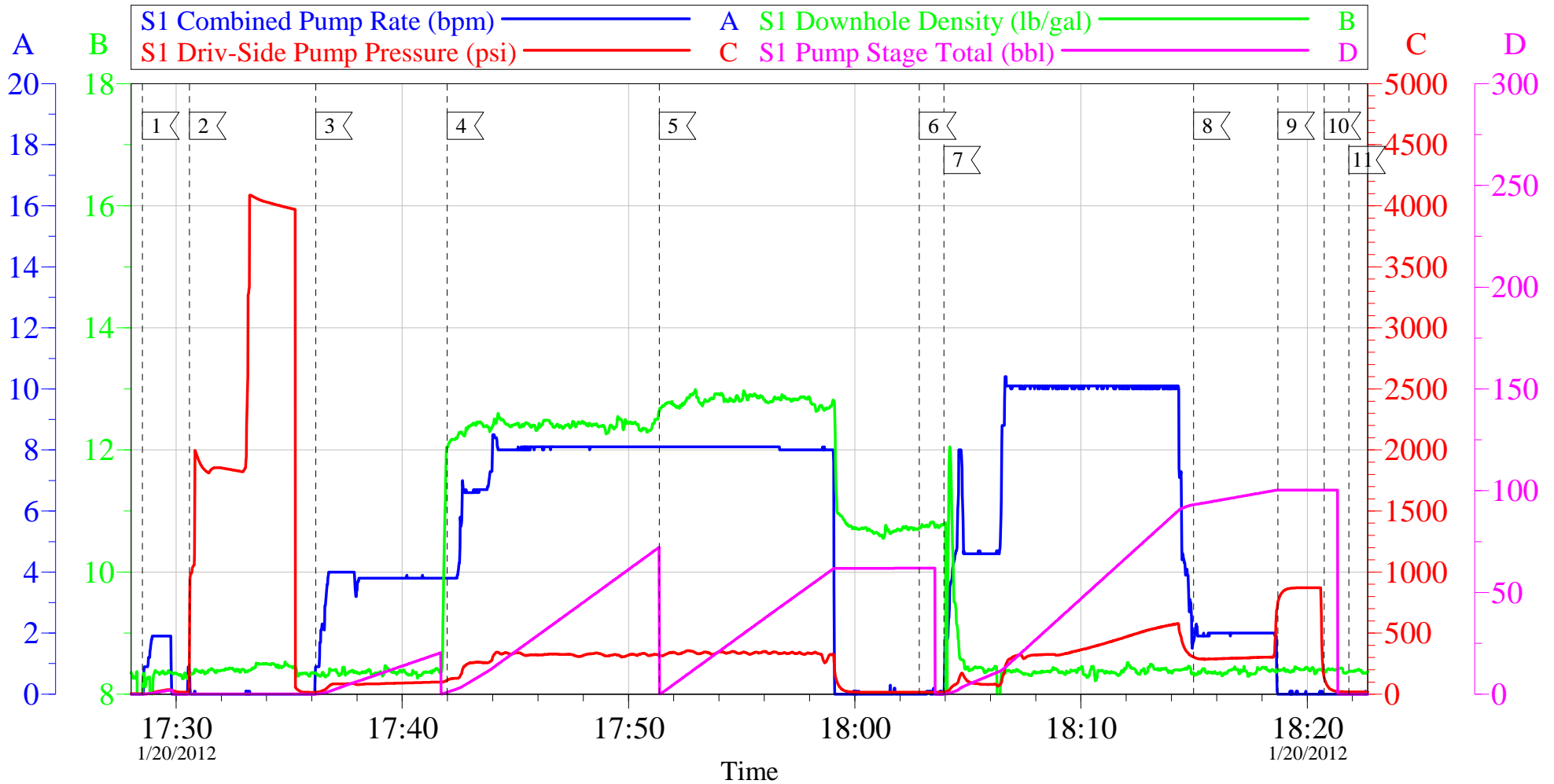
Miscellaneous Materials

| Gelling Agt | Conc | Surfactant | Conc | Acid Type | Qty | Conc % |
|---------------|------|------------|------|-----------|------|--------|
| Treatment Fld | Conc | Inhibitor | Conc | Sand Type | Size | Qty |

| Fluid Data | | | | | | | | | |
|--|--------------------|-------------------------------|--------|-----------------------------------|------------------------|---------------------------|------------------|--------------|------------------------|
| Stage/Plug #: 1 | | | | | | | | | |
| Fluid # | Stage Type | Fluid Name | Qty | Qty uom | Mixing Density lbm/gal | Yield ft ³ /sk | Mix Fluid Gal/sk | Rate bbl/min | Total Mix Fluid Gal/sk |
| 1 | Fresh Water | | 20.00 | bbl | 8.33 | .0 | .0 | .0 | |
| 2 | Lead Cement | VERSACEM (TM) SYSTEM (452010) | 180.0 | sacks | 12.3 | 2.38 | 13.75 | | 13.75 |
| 3 | Tail Cement | VERSACEM (TM) SYSTEM (452010) | 160.0 | sacks | 12.8 | 2.11 | 11.75 | | 11.75 |
| 4 | Displacement Fluid | | 101.00 | bbl | 8.34 | .0 | .0 | .0 | |
| Calculated Values | | Pressures | | | Volumes | | | | |
| Displacement | 101.4 | Shut In: Instant | | Lost Returns | NO | Cement Slurry | 136.4 | Pad | |
| Top Of Cement | SURFACE | 5 Min | | Cement Returns | 22 | Actual Displacement | 101 | Treatment | |
| Frac Gradient | | 15 Min | | Spacers | 20 | Load and Breakdown | | Total Job | |
| Rates | | | | | | | | | |
| Circulating | | Mixing | 8 | Displacement | 10 | Avg. Job | 9 | | |
| Cement Left In Pipe | Amount | 44 ft | Reason | Shoe Joint | | | | | |
| Frac Ring # 1 @ | ID | Frac ring # 2 @ | ID | Frac Ring # 3 @ | ID | Frac Ring # 4 @ | ID | | |
| The Information Stated Herein Is Correct | | | | Customer Representative Signature | | | | | |

WILLIAMS PRODUCTION GM 524-14

9 5/8" SURFACE

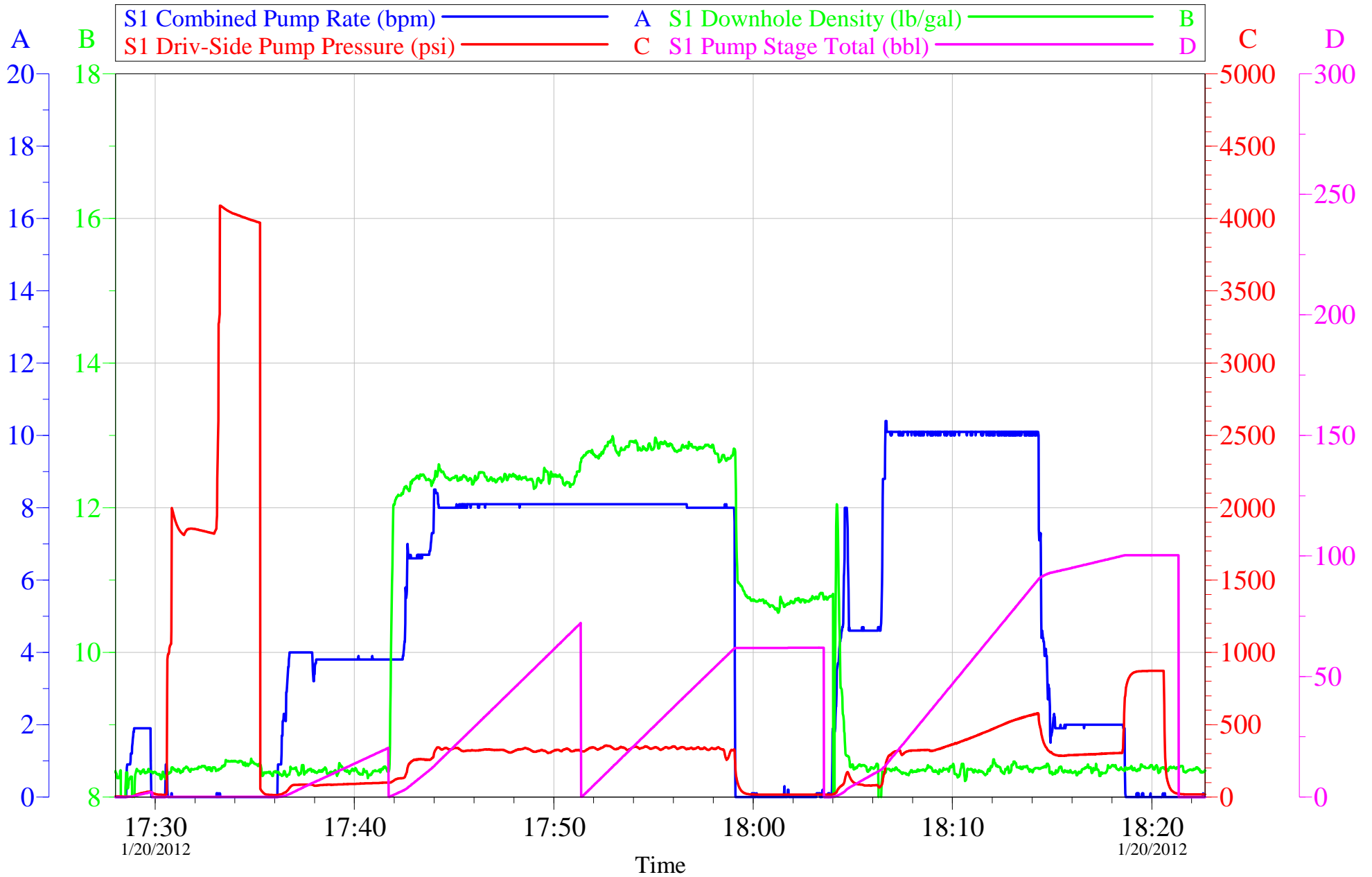


| Local Event Log | | | | | |
|-----------------|-------------------|----------|----|------------------|----------|
| 1 | START JOB | 17:28:31 | 2 | TEST LINES | 17:30:35 |
| 3 | PUMP H2O SPACER | 17:36:10 | 4 | PUMP LEAD CEMENT | 17:41:59 |
| 5 | PUMP TAIL CEMENT | 17:51:22 | 6 | DROP TOP PLUG | 18:02:51 |
| 7 | PUMP DISPLACEMENT | 18:03:57 | 8 | SLOW RATE | 18:14:58 |
| 9 | LAND PLUG | 18:18:42 | 10 | CHECK FLOATS | 18:20:45 |
| 11 | END JOB | 18:21:50 | | | |

| | | |
|-------------------------------|-------------------------|------------------------------|
| Customer: WILLIAMS PRODUCTION | Job Date: 20-Jan-2012 | Sales Order #: 9134507 |
| Well Description: GM 524-14 | Job Type: SURFACE | ADC Used: YES |
| Supervisor: BRANDON REEVES | Company Rep: RON TOWERS | Elite/Operator: 3/JACOB DOUT |

WILLIAMS PRODUCTION GM 524-14

9 5/8" SURFACE



| | | |
|-------------------------------|-------------------------|------------------------------|
| Customer: WILLIAMS PRODUCTION | Job Date: 20-Jan-2012 | Sales Order #: 9134507 |
| Well Description: GM 524-14 | Job Type: SURFACE | ADC Used: YES |
| Supervisor: BRANDON REEVES | Company Rep: RON TOWERS | Elite/Operator: 3/JACOB DOUT |

HALLIBURTON

Water Analysis Report

Company: WILLIAMS PRODUCTION

Date: 1/20/2012

Submitted by: BRANDON REEVES

Date Rec.: 1/20/2012

Attention: J. TROUT/C.MARTINEZ

S.O.# 9134507

Lease GM

Job Type: SURFACE

Well # 524-14

| | | |
|-----------------------------|--------------|-------------------------|
| Specific Gravity | <i>MAX</i> | 1 |
| pH | <i>8</i> | 6.5 |
| Potassium (K) | <i>5000</i> | 250 Mg / L |
| Calcium (Ca) | <i>500</i> | 120 Mg / L |
| Iron (FE2) | <i>300</i> | 0 Mg / L |
| Chlorides (Cl) | <i>3000</i> | 0 Mg / L |
| Sulfates (SO ₄) | <i>1500</i> | UNDER 200 Mg / L |
| Chlorine (Cl ₂) | | 0 Mg / L |
| Temp | <i>40-80</i> | 46 Deg |
| Total Dissolved Solids | | 70 Mg / L |

Respectfully: BRANDON REEVES

Title: CEMENTING SUPERVISOR

Location: Grand Junction, CO

NOTICE:

This report is limited to the described sample tested. Any person using or relying on this report agrees that Halliburton shall not be liable for any loss or damage whether due to act or omission resulting from such report or its

| | | |
|--|--|--|
| Sales Order #: 9134507 | Line Item: 10 | Survey Conducted Date: 1/20/2012 |
| Customer: WPX ENERGY ROCKY MOUNTAIN LLC-EBUS | | Job Type (BOM): CMT SURFACE CASING BOM |
| Customer Representative: | | API / UWI: (leave blank if unknown) 05-045-20828 |
| Well Name: GM | | Well Number: 524-14 |
| Well Type: Development Well | Well Country: United States of America | |
| H2S Present: | Well State: Colorado | Well County: Garfield |

Dear Customer,

We hope that you were satisfied with the service quality of this job performed by Halliburton. It is the aim of our management and service personnel to deliver equipment and service of a standard unmatched in the service sector of the energy industry.

Please take the time to let us know if our performance met with your satisfaction. Please be as critical as possible to ensure we constantly improve our service. Your comments are of great value to us and are intended for the exclusive use of Halliburton.

CUSTOMER SATISFACTION SURVEY

| CATEGORY | CUSTOMER SATISFACTION RESPONSE | |
|-------------------------|--|--------------------------|
| Survey Conducted Date | The date the survey was conducted | 1/20/2012 |
| Survey Interviewer | The survey interviewer is the person who initiated the survey. | BRANDON REEVES (HBT9414) |
| Customer Participation | Did the customer participate in this survey? (Y/N) | No |
| Customer Representative | Enter the Customer representative name | |
| HSE | Was our HSE performance satisfactory? Circle Y or N | |
| Equipment | Were you satisfied with our Equipment? Circle Y or N | |
| Personnel | Were you satisfied with our people? Circle Y or N | |
| Customer Comment | Customer's Comment | |

| |
|---------------------------|
| CUSTOMER SIGNATURE |
|---------------------------|

| | | |
|--|--|--|
| Sales Order #: 9134507 | Line Item: 10 | Survey Conducted Date: 1/20/2012 |
| Customer: WPX ENERGY ROCKY MOUNTAIN LLC-EBUS | | Job Type (BOM): CMT SURFACE CASING BOM |
| Customer Representative: | | API / UWI: (leave blank if unknown) 05-045-20828 |
| Well Name: GM | | Well Number: 524-14 |
| Well Type: Development Well | Well Country: United States of America | |
| H2S Present: | Well State: Colorado | Well County: Garfield |

KEY PERFORMANCE INDICATORS

| General | |
|-----------------------------------|-----------|
| Survey Conducted Date | 1/20/2012 |
| The date the survey was conducted | |

| Cementing KPI Survey | |
|---|-------------------------|
| Type of Job | 0 |
| Select the type of job. (Cementing or Non-Cementing) | |
| Select the Maximum Deviation range for this Job | Deviated |
| What is the highest deviation for the job you just completed? This may not be the maximum well deviation. | |
| Total Operating Time (hours) | 2 |
| Total Operating Hours Including Rig-up, Pumping, Rig-down. Enter in decimal format. | |
| HSE Incident, Accident, Injury | No |
| HSE Incident, Accident, Injury. This should be recordable incidents only. | |
| Was the job purpose achieved? | Yes |
| Was the job delivered correctly as per customer agreed design? | |
| Operating Hours (Pumping Hours) | 1 |
| Total number of hours pumping fluid on this job. Enter in decimal format. | |
| Customer Non-Productive Rig Time (hrs) | 0 |
| Lost time due to Halliburton in the start, execution, or completion of an ordered service or product, or delays in a follow-on service. Enter in decimal format. 0 if none. | |
| Type of Rig Classification Job Was Performed | Drilling Rig (Portable) |
| Type Of Rig (classification) Job Was Performed On | |
| Number Of JSAs Performed | 6 |
| Number Of Jsas Performed | |
| Number of Unplanned Shutdowns | 0 |
| Unplanned shutdown is when injection stops for any period of time. | |
| Was this a Primary Cement Job (Yes / No) | Yes |

| | | |
|--|--|--|
| Sales Order #: 9134507 | Line Item: 10 | Survey Conducted Date: 1/20/2012 |
| Customer: WPX ENERGY ROCKY MOUNTAIN LLC-EBUS | | Job Type (BOM): CMT SURFACE CASING BOM |
| Customer Representative: | | API / UWI: (leave blank if unknown) 05-045-20828 |
| Well Name: GM | | Well Number: 524-14 |
| Well Type: Development Well | Well Country: United States of America | |
| H2S Present: | Well State: Colorado | Well County: Garfield |

| | |
|--|-----|
| Primary Cement Job= Casing job, Liner job, or Tie-back job. | |
| Did We Run Wiper Plugs? Did We Run Top And Bottom Casing Wiper Plugs? | Top |
| Mixing Density of Job Stayed in Designed Density Range (0-100%) Density Range defined as +/- .20 ppg. Calculation: Total BBLs cement mixed at designed density divided by total BBLs of cement multiplied by 100 | 95 |
| Was Automated Density Control Used? Was Automated Density Control (ADC) Used ? | Yes |
| Pump Rate (percent) of Job Stayed At Designed Pump Rate Pump Rate range defined as +/- 1bbl/min. Calculation: Total BBLs of fluid pumped at the designed rate divided by Total BBLs of fluid pumped, multiplied by 100 | 98 |
| Nbr of Remedial Sqz Jobs Rqd - Competition Number Of Remedial Squeeze Jobs Required After Primary Job Performed By Competition | 0 |
| Nbr of Remedial Plug Jobs Rqd - HES Number Of Remedial Plug Jobs Needed After Primary Plug Pumped By HES | 0 |
| Nbr of Remedial Sqz Jobs Rqd - HES Number Of Remedial Squeeze Jobs Required After Primary Job Performed By HES | 0 |