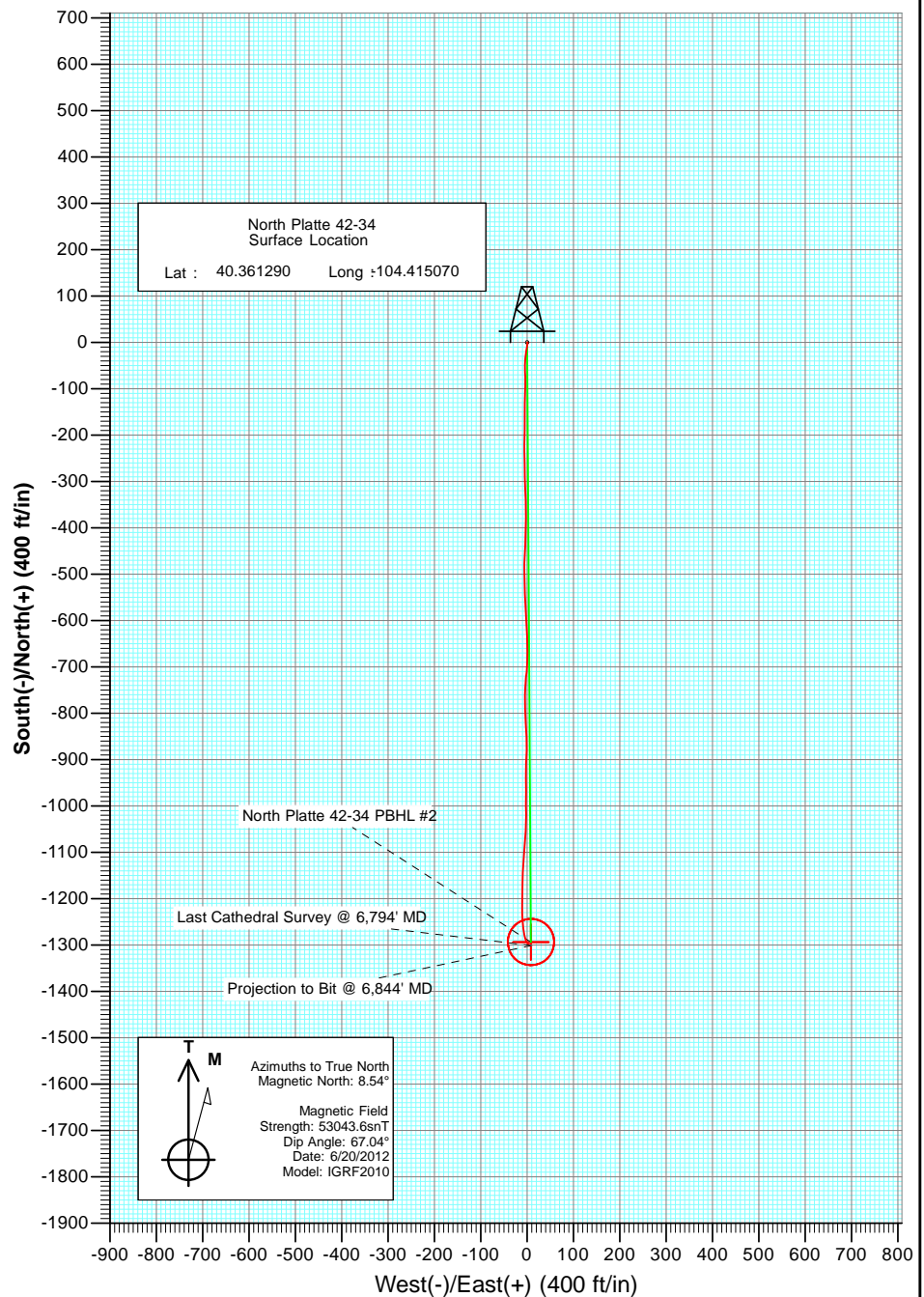
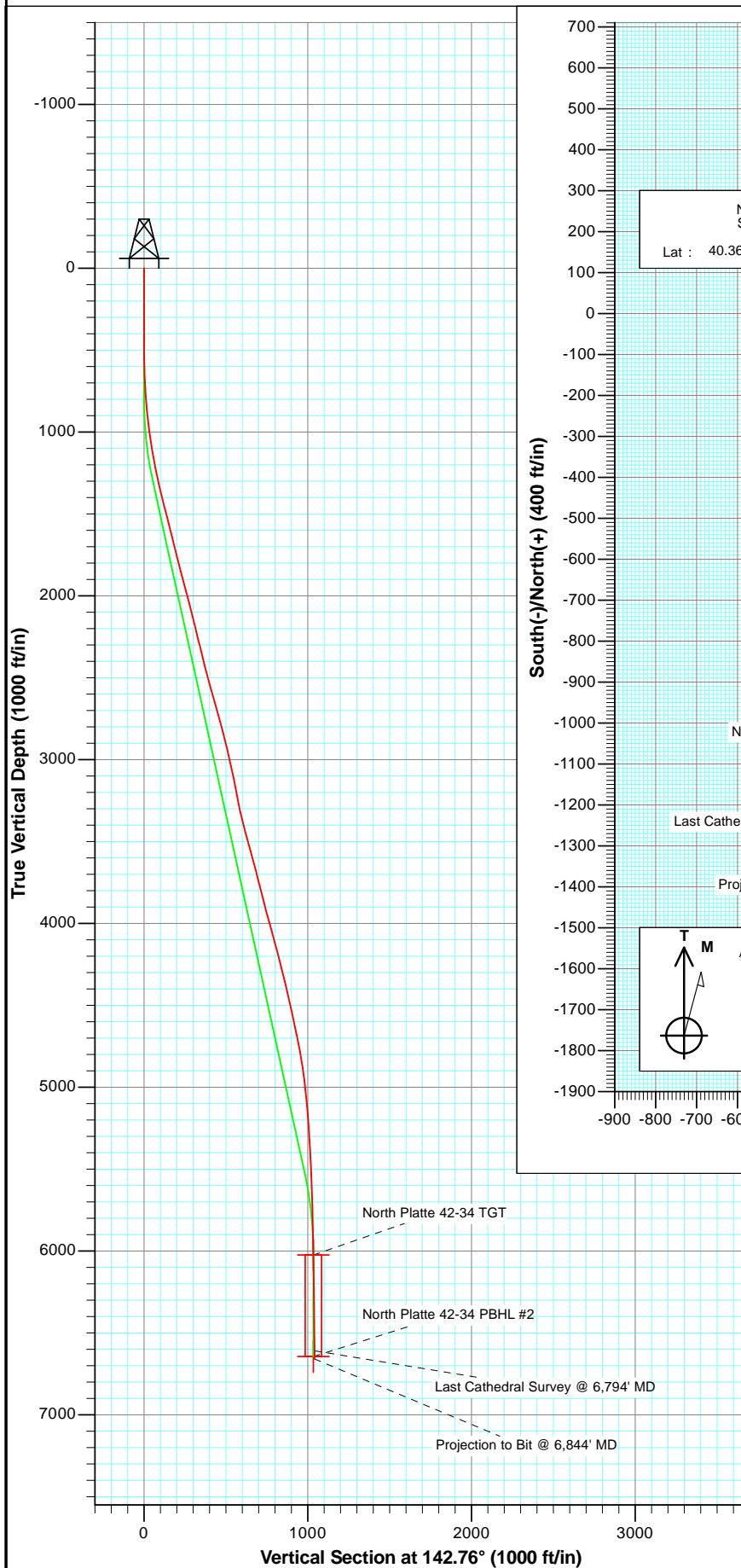




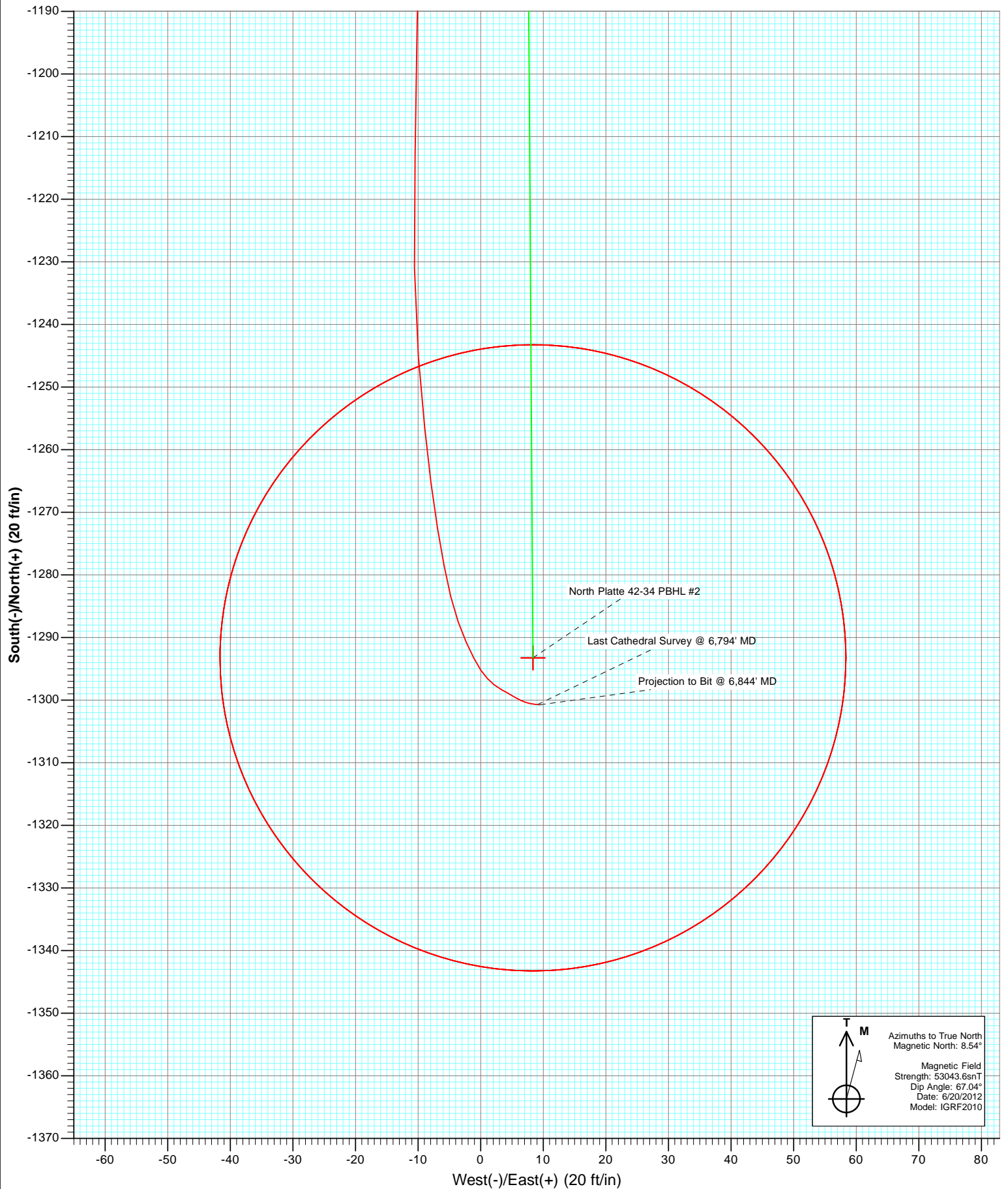
Project: Weld County
Site: North Platte 42-34 Pad
Well: North Platte 42-34
Wellbore: OH
Plan: FINAL



OH North Platte 42-34 125415/177955; SC						
KBE @ 4544.0ft (Original Well Elev) North American Datum 1983 Well North Platte 42-34, True North						
Type	Target	Azimuth	Origin	Type	N/S	E/W
User	No Target (Freehand)	142.76	Slot		0.0	0.0
Name	TVD	+N/-S	+E/-W	Latitude	Longitude	
North Platte 42-34 TGT	6024.0	-1293.2	8.4	40.357740	-104.415040	
North Platte 42-34 PBHL #2	6644.0	-1293.2	8.4	40.357740	-104.415040	



Project: Weld County
Site: North Platte 42-34 Pad
Well: North Platte 42-34
Wellbore: OH
Plan: FINAL



Cathedral Energy Services

Survey Report

Company:	Bonanza Creek Energy Operating Company, LLC	Local Co-ordinate Reference:	Well North Platte 42-34
Project:	Weld County	TVD Reference:	KBE @ 4544.0ft (Original Well Elev)
Site:	North Platte 42-34 Pad	MD Reference:	KBE @ 4544.0ft (Original Well Elev)
Well:	North Platte 42-34	North Reference:	True
Wellbore:	OH	Survey Calculation Method:	Minimum Curvature
Design:	OH	Database:	USA EDM 5000 Multi Users DB

Project	Weld County		
Map System:	US State Plane 1983	System Datum:	Mean Sea Level
Geo Datum:	North American Datum 1983		
Map Zone:	Colorado Northern Zone		

Site		North Platte 42-34 Pad			
Site Position:		Northing:	1,376,310.78 ft	Latitude:	40.361290
From:	Lat/Long	Easting:	3,302,335.84 ft	Longitude:	-104.415070
Position Uncertainty:	0.0 ft	Slot Radius:	13.200 in	Grid Convergence:	0.70 °

Well	North Platte 42-34					
Well Position	+N/-S	0.0 ft	Northing:	1,376,310.78 ft	Latitude:	40.361290
	+E/-W	0.0 ft	Easting:	3,302,335.84 ft	Longitude:	-104.415070
Position Uncertainty		0.0 ft	Wellhead Elevation:	ft	Ground Level:	4,534.0 ft

Wellbore	OH				
Magnetics	Model Name	Sample Date	Declination (°)	Dip Angle (°)	Field Strength (nT)
	IGRF2010	6/20/2012	8.54	67.04	53,044

Design	OH				
Audit Notes:					
Version:	1.0	Phase:	ACTUAL	Tie On Depth:	0.0
Vertical Section:	Depth From (TVD)	+N/-S	+E/-W	Direction	
	(ft)	(ft)	(ft)	(°)	
	0.0	0.0	0.0	142.76	

Survey Program	Date	7/24/2012			
From (ft)	To (ft)	Survey (Wellbore)	Tool Name	Description	
494.0	6,844.0	Survey #1 (OH)	MWD	Geolink MWD	

Survey										
Measured Depth (ft)	Inclination (°)	Azimuth (°)	Vertical Depth (ft)	+N/-S (ft)	+E/-W (ft)	Vertical Section (ft)	Dogleg Rate (°/100ft)	Build Rate (°/100ft)	Formations / Comments	
0.0	0.00	0.00	0.0	0.0	0.0	0.0	0.00	0.00		
494.0	0.20	82.00	494.0	0.1	0.9	0.4	0.04	0.04		
587.0	1.80	180.50	587.0	-1.3	1.0	1.7	1.98	1.72		
681.0	3.90	192.10	680.9	-5.9	0.3	4.9	2.31	2.23		
775.0	5.70	189.20	774.5	-13.7	-1.1	10.2	1.93	1.91		
870.0	7.40	186.90	868.9	-24.4	-2.6	17.8	1.81	1.79		
965.0	9.40	186.30	962.9	-38.2	-4.2	27.9	2.11	2.11		
1,058.0	10.70	177.70	1,054.5	-54.3	-4.7	40.4	2.13	1.40		
1,153.0	12.30	177.90	1,147.5	-73.3	-3.9	56.0	1.68	1.68		
1,247.0	14.30	181.20	1,239.0	-94.9	-3.8	73.2	2.27	2.13		
1,340.0	16.70	182.70	1,328.6	-119.7	-4.7	92.5	2.62	2.58		
1,433.0	18.40	180.50	1,417.3	-147.8	-5.4	114.3	1.96	1.83		
1,528.0	17.10	179.10	1,507.8	-176.7	-5.4	137.4	1.44	-1.37		

Cathedral Energy Services

Survey Report

Company:	Bonanza Creek Energy Operating Company, LLC	Local Co-ordinate Reference:	Well North Platte 42-34
Project:	Weld County	TVD Reference:	KBE @ 4544.0ft (Original Well Elev)
Site:	North Platte 42-34 Pad	MD Reference:	KBE @ 4544.0ft (Original Well Elev)
Well:	North Platte 42-34	North Reference:	True
Wellbore:	OH	Survey Calculation Method:	Minimum Curvature
Design:	OH	Database:	USA EDM 5000 Multi Users DB

Survey									
Measured Depth (ft)	Inclination (°)	Azimuth (°)	Vertical Depth (ft)	+N/-S (ft)	+E/-W (ft)	Vertical Section (ft)	Dogleg Rate (°/100ft)	Build Rate (°/100ft)	Formations / Comments
1,623.0	17.90	181.20	1,598.4	-205.3	-5.4	160.1	1.07	0.84	
1,717.0	16.60	179.90	1,688.2	-233.1	-5.7	182.2	1.44	-1.38	
1,812.0	18.50	179.40	1,778.7	-261.8	-5.5	205.1	2.01	2.00	
1,906.0	17.60	177.80	1,868.1	-290.9	-4.8	228.7	1.09	-0.96	
1,999.0	19.00	178.70	1,956.4	-320.1	-4.0	252.4	1.54	1.51	
2,091.0	17.40	177.30	2,043.8	-348.8	-3.0	275.9	1.80	-1.74	
2,186.0	16.70	180.50	2,134.6	-376.6	-2.4	298.4	1.23	-0.74	
2,280.0	17.30	181.70	2,224.5	-404.1	-2.9	320.0	0.74	0.64	
2,373.0	18.90	182.30	2,312.9	-433.0	-4.0	342.3	1.73	1.72	
2,468.0	17.20	182.80	2,403.2	-462.4	-5.3	364.9	1.80	-1.79	
2,562.0	18.50	180.10	2,492.7	-491.2	-6.0	387.4	1.64	1.38	
2,655.0	19.70	178.20	2,580.6	-521.6	-5.5	412.0	1.45	1.29	
2,749.0	18.90	177.30	2,669.3	-552.7	-4.3	437.4	0.91	-0.85	
2,843.0	17.30	176.10	2,758.6	-581.8	-2.6	461.6	1.75	-1.70	
2,936.0	18.10	178.20	2,847.2	-610.0	-1.2	484.9	1.10	0.86	
3,029.0	15.80	176.80	2,936.2	-637.1	-0.1	507.2	2.51	-2.47	
3,122.0	15.50	179.50	3,025.7	-662.2	0.8	527.7	0.85	-0.32	
3,215.0	15.30	181.50	3,115.4	-686.9	0.5	547.2	0.61	-0.22	
3,308.0	14.40	187.00	3,205.3	-710.6	-1.2	565.1	1.80	-0.97	
3,402.0	15.50	183.90	3,296.1	-734.8	-3.5	582.9	1.45	1.17	
3,496.0	17.70	180.90	3,386.2	-761.6	-4.5	603.6	2.51	2.34	
3,590.0	19.00	178.20	3,475.4	-791.2	-4.3	627.3	1.65	1.38	
3,685.0	18.90	177.00	3,565.3	-822.0	-3.0	652.6	0.42	-0.11	
3,779.0	17.30	176.90	3,654.6	-851.2	-1.4	676.8	1.70	-1.70	
3,873.0	17.90	181.80	3,744.2	-879.6	-1.1	699.6	1.70	0.64	
3,967.0	18.30	182.30	3,833.6	-908.7	-2.2	722.2	0.46	0.43	
4,062.0	18.20	179.00	3,923.8	-938.5	-2.5	745.6	1.09	-0.11	
4,156.0	18.80	179.80	4,012.9	-968.3	-2.2	769.6	0.69	0.64	
4,250.0	19.60	180.90	4,101.7	-999.2	-2.4	794.1	0.93	0.85	
4,345.0	18.20	180.30	4,191.6	-1,030.0	-2.7	818.4	1.49	-1.47	
4,439.0	18.60	182.30	4,280.8	-1,059.6	-3.4	841.6	0.79	0.43	
4,533.0	17.80	184.70	4,370.1	-1,088.9	-5.2	863.8	1.17	-0.85	
4,627.0	16.20	185.60	4,460.0	-1,116.3	-7.7	884.1	1.72	-1.70	
4,722.0	15.90	181.40	4,551.3	-1,142.5	-9.3	904.0	1.26	-0.32	
4,816.0	15.20	181.00	4,641.8	-1,167.7	-9.8	923.7	0.75	-0.74	
4,911.0	14.10	180.50	4,733.7	-1,191.7	-10.1	942.7	1.17	-1.16	
5,004.0	12.30	181.50	4,824.3	-1,213.0	-10.5	959.4	1.95	-1.94	
5,098.0	9.80	178.80	4,916.5	-1,231.0	-10.6	973.6	2.72	-2.66	
5,192.0	7.70	175.60	5,009.4	-1,245.3	-9.9	985.4	2.29	-2.23	
5,287.0	5.90	174.10	5,103.8	-1,256.5	-8.9	994.9	1.90	-1.89	
5,381.0	4.90	172.80	5,197.3	-1,265.2	-7.9	1,002.5	1.07	-1.06	
5,475.0	4.10	170.70	5,291.0	-1,272.5	-6.9	1,009.0	0.87	-0.85	
5,569.0	3.30	169.10	5,384.9	-1,278.5	-5.8	1,014.4	0.86	-0.85	
5,663.0	2.80	166.80	5,478.7	-1,283.4	-4.8	1,018.9	0.55	-0.53	
5,757.0	2.40	160.00	5,572.6	-1,287.5	-3.6	1,022.9	0.54	-0.43	
5,851.0	1.90	155.90	5,666.6	-1,290.8	-2.3	1,026.3	0.56	-0.53	
5,945.0	1.50	152.40	5,760.5	-1,293.3	-1.1	1,029.0	0.44	-0.43	
6,039.0	1.20	147.30	5,854.5	-1,295.2	0.0	1,031.2	0.34	-0.32	
6,134.0	0.90	134.20	5,949.5	-1,296.6	1.1	1,032.9	0.40	-0.32	
6,228.0	0.90	131.30	6,043.5	-1,297.6	2.2	1,034.4	0.05	0.00	
6,323.0	0.90	116.10	6,138.4	-1,298.4	3.4	1,035.8	0.25	0.00	
6,417.0	0.90	121.00	6,232.4	-1,299.1	4.7	1,037.1	0.08	0.00	
6,511.0	0.80	117.70	6,326.4	-1,299.8	5.9	1,038.4	0.12	-0.11	

Cathedral Energy Services

Survey Report

Company:	Bonanza Creek Energy Operating Company, LLC	Local Co-ordinate Reference:	Well North Platte 42-34
Project:	Weld County	TVD Reference:	KBE @ 4544.0ft (Original Well Elev)
Site:	North Platte 42-34 Pad	MD Reference:	KBE @ 4544.0ft (Original Well Elev)
Well:	North Platte 42-34	North Reference:	True
Wellbore:	OH	Survey Calculation Method:	Minimum Curvature
Design:	OH	Database:	USA EDM 5000 Multi Users DB

Survey									
Measured Depth (ft)	Inclination (°)	Azimuth (°)	Vertical Depth (ft)	+N/-S (ft)	+E/-W (ft)	Vertical Section (ft)	Dogleg Rate (°/100ft)	Build Rate (°/100ft)	Formations / Comments
6,605.0	0.70	112.60	6,420.4	-1,300.3	7.0	1,039.5	0.13	-0.11	
6,700.0	0.70	95.60	6,515.4	-1,300.6	8.1	1,040.4	0.22	0.00	
6,794.0	0.50	97.60	6,609.4	-1,300.7	9.1	1,041.0	0.21	-0.21	Last Cathedral Survey @ 6,794' MD
6,844.0	0.50	97.60	6,659.4	-1,300.7	9.6	1,041.4	0.00	0.00	Projection to Bit @ 6,844' MD

Targets									
Target Name	Dip Angle (°)	Dip Dir. (°)	TVD (ft)	+N/-S (ft)	+E/-W (ft)	Northing (ft)	Easting (ft)	Latitude	Longitude
- hit/miss target									
- Shape									
North Platte 42-34 PBHL	0.00	0.00	6,614.0	-1,293.2	8.4	1,375,017.73	3,302,360.02	40.357740	-104.415040
- actual wellpath misses target center by 8.8ft at 6794.0ft MD (6609.4 TVD, -1300.7 N, 9.1 E)									
- Circle (radius 50.0)									
North Platte 42-34 TGT	0.00	0.00	6,024.0	-1,293.2	8.4	1,375,017.73	3,302,360.02	40.357740	-104.415040
- actual wellpath misses target center by 7.6ft at 6208.6ft MD (6024.0 TVD, -1297.4 N, 1.9 E)									
- Point									
North Platte 42-34 PBHL	0.00	0.00	6,644.0	-1,293.2	8.4	1,375,017.73	3,302,360.02	40.357740	-104.415040
- actual wellpath misses target center by 7.6ft at 6828.6ft MD (6644.0 TVD, -1300.7 N, 9.4 E)									
- Circle (radius 50.0)									

Design Annotations					
Measured Depth (ft)	Vertical Depth (ft)	Local Coordinates			
		+N/-S (ft)	+E/-W (ft)	Comment	
6,794.0	6,609.4	-1,300.7	9.1	Last Cathedral Survey @ 6,794' MD	
6,844.0	6,659.4	-1,300.7	9.6	Projection to Bit @ 6,844' MD	

Checked By: _____ Approved By: _____ Date: _____