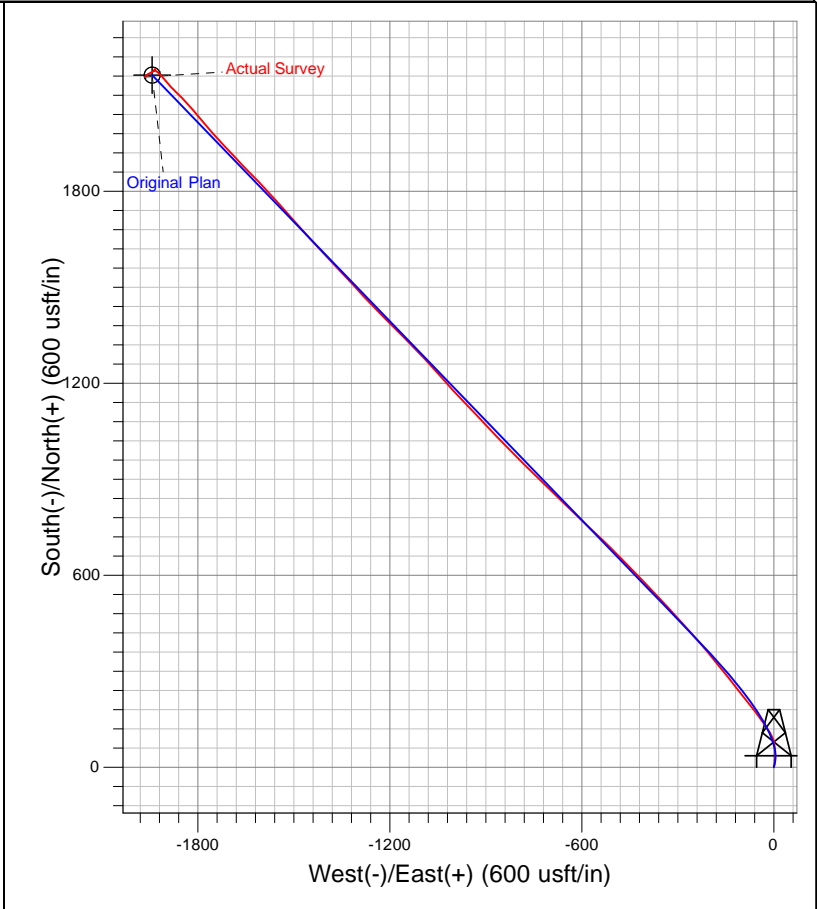
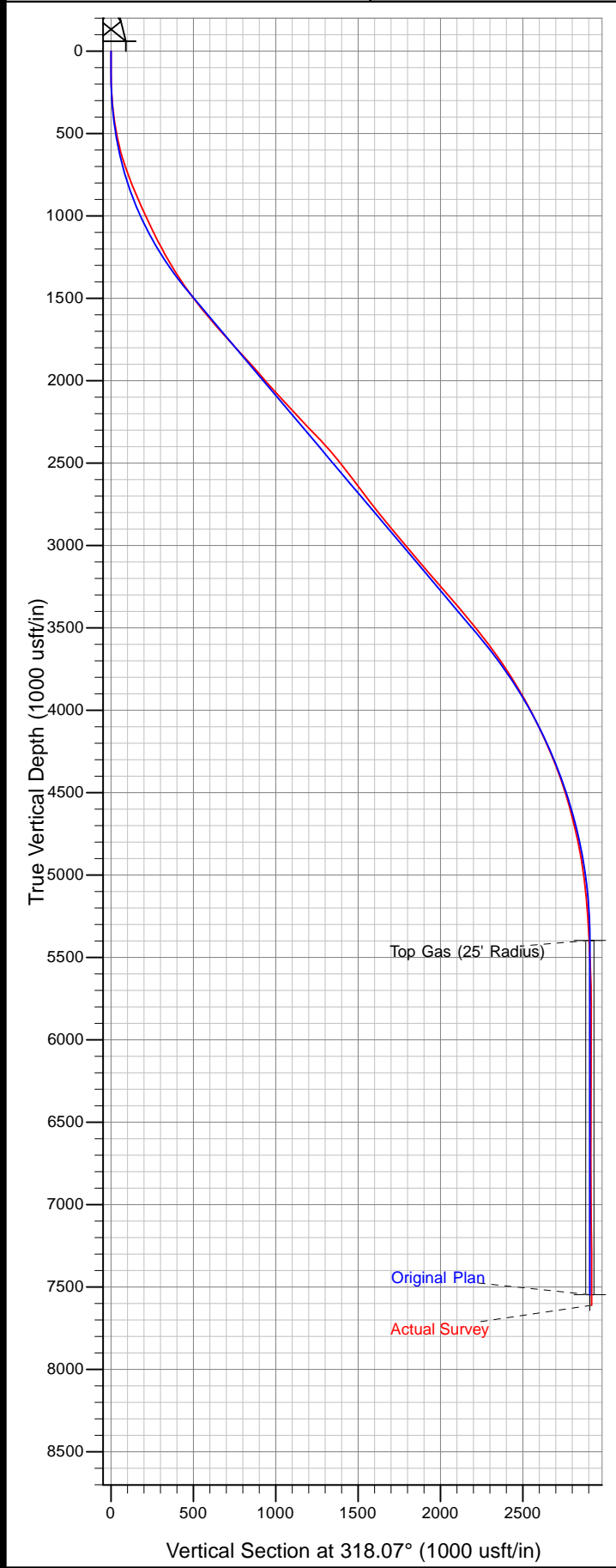




Well Name: PA 513-29
Surface Location: DOE 3-W-29 Pad
North American Datum 1983 , US State Plane 1983 . Colorado Central Zone
Ground Elevation: 5676.00

+N/-S	+E/-W	Northing	Easting	Latitude	Longitude	Slot
0.00	0.00	1613235.20	2287980.30	39.48996	-108.02321	A8

WELL @ 5702.00usft (Nabors 577 (26') kjs)



T
M

Azimuths to True North
Magnetic North: 10.26°

Magnetic Field
Strength: 52161.6snT
Dip Angle: 65.71°
Date: 4/14/2012
Model: IGRF2010