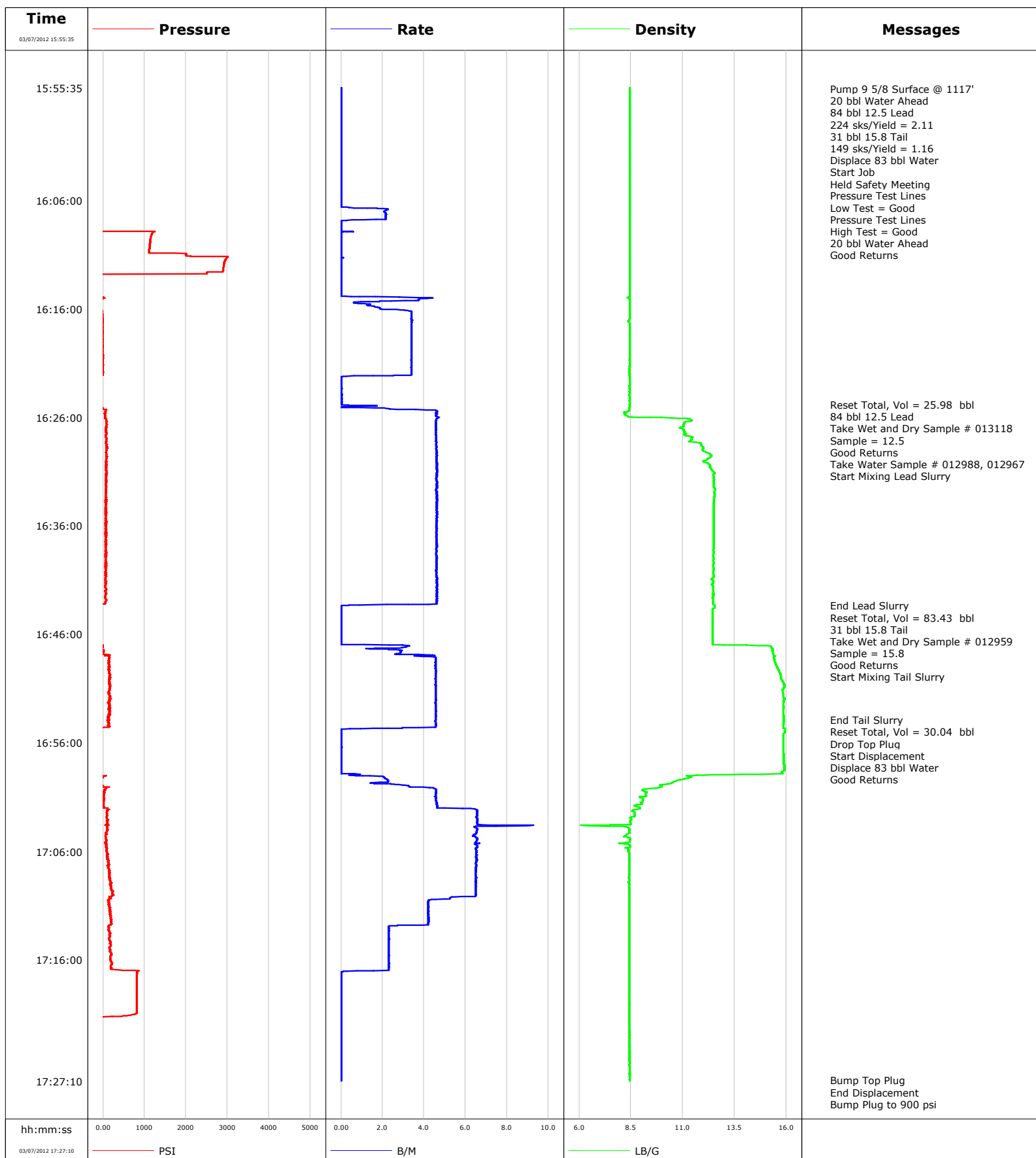


Well COOK EXXON 20-5BB
Field COOK EXXON
Engineer Tom Leduc
Country United States

Client ENCANA
SIR No.
Job Type 9 5/8 SURFACE
Job Date 03-07-2012





Cementing Service Report

				Customer ENCANA		Job Number COBA-00265		
Well COOK EXXON 20-5BB 20-5BB			Location (legal) PB20		Schlumberger Location Grand Junction		Job Start Mar/07/2012	
Field COOK EXXON		Formation Name/Type Shale		Deviation 0 deg	Bit Size 12.3 in	Well MD 1117.0 ft		Well TVD 1117.0 ft
County GARFIELD		State/Province Colorado		BHP	BHST 94 degF	BHCT 86 degF	Pore Press. Gradient	
Well Master 0631266787		API/UWI						
Rig Name NABORS M13	Drilled For Gas	Service Via Land	Casing/Liner					
			Depth, ft	Size, in	Weight, lb/ft	Grade	Thread	
Offshore Zone	Well Class New	Well Type Development	1117.0	9.630	36.0	K55	8rd	
			0.0	0.000	0.0			
Drilling Fluid Type Bentonite		Max. Density 9.20 lb/gal	Plastic Viscosity 25.000 cP	Tubing/Drill Pipe				
				Depth,	Size,	Weight,	Grade	Thread
Service Line Cementing	Job Type 9 5/8 SURFACE							
Max. Allowed Tub. Press 3000 psi	Max. Allowed Ann. Press 500 psi	WH Connection Single Cement head	Perforations/Open Hole					
			Top,	Bottom,		No. of Shots	Total Interval	
							Diameter	
			Treat Down Casing	Displacement 83.0 bbl	Packer Type	Packer Depth		
			Tubing Vol.	Casing Vol. 89.0 bbl	Annular Vol. 66.0 bbl	Openhole Vol. 155.0 bbl		
Casing/Tubing Secured <input checked="" type="checkbox"/>		1 Hole Vol. Circulated prior to Cement <input checked="" type="checkbox"/>		Casing Tools		Squeeze Job		
Lift Pressure 553 psi				Shoe Type Float		Squeeze Type		
Pipe Rotated <input type="checkbox"/>		Pipe Reciprocated <input type="checkbox"/>		Shoe Depth 1117.0 ft		Tool Type		
No. Centralizers		Top Plugs	Bottom Plugs	Stage Tool Type		Tool Depth		
Cement Head Type Single			Stage Tool Depth		Tail Pipe Size			
Job Scheduled For Mar/07/2012 14:00		Arrived on Location Mar/07/2012 14:00	Leave Location Mar/07/2012 19:00	Collar Type Float		Tail Pipe Depth		
				Collar Depth 1074.0 ft		Sqz. Total Vol.		
Date	Time 24-hr clock	Treating Pressure PSI	Flow Rate B/M	Density LB/G	Volume BBL	Message		
03/07/2012	15:55:35	-127	0.0	8.44	0.0			
03/07/2012	15:55:41					Pump 9 5/8 Surface @ 1117'		
03/07/2012	15:55:41					20 bbl Water Ahead		
03/07/2012	15:55:41	-127	0.0	8.44	0.0			
03/07/2012	15:55:42					84 bbl 12.5 Lead		
03/07/2012	15:55:42					224 sks/Yield = 2.11		
03/07/2012	15:55:42					31 bbl 15.8 Tail		
03/07/2012	15:55:42					149 sks/Yield = 1.16		
03/07/2012	15:55:42					Displace 83 bbl Water		
03/07/2012	15:55:42	-126	0.0	8.44	0.0			
03/07/2012	15:55:45					Start Job		
03/07/2012	15:55:45	-127	0.0	8.44	0.0			
03/07/2012	15:55:51					Held Safety Meeting		
03/07/2012	15:55:51	-127	0.0	8.44	0.0			
03/07/2012	15:55:52					Pressure Test Lines		
03/07/2012	15:55:52	-126	0.0	8.44	0.0			
03/07/2012	15:55:53					Low Test = Good		
03/07/2012	15:55:53	-127	0.0	8.44	0.0			
03/07/2012	15:55:54					Pressure Test Lines		
03/07/2012	15:55:54	-127	0.0	8.44	0.0			
03/07/2012	15:55:55					High Test = Good		

Well			Field	Job Start		Customer	Job Number
COOK EXXON 20-5BB 20-5BB			COOK EXXON	Mar/07/2012		ENCANA	C0BA-00265
Date	Time 24-hr clock	Treating Pressure PSI	Flow Rate B/M	Density LB/G	Volume BBL	Message	
03/07/2012	15:55:55					Good Returns	
03/07/2012	15:55:55	-126	0.0	8.44	0.0		
03/07/2012	15:57:40	-128	0.0	8.44	0.0		
03/07/2012	15:59:45	-128	0.0	8.44	0.1		
03/07/2012	16:01:50	-127	0.0	8.44	0.1		
03/07/2012	16:03:55	-128	0.0	8.44	0.1		
03/07/2012	16:06:00	-133	0.0	8.44	0.2		
03/07/2012	16:08:05	-118	0.0	8.44	2.5		
03/07/2012	16:10:10	1126	0.0	8.44	2.6		
03/07/2012	16:12:15	2902	0.0	8.43	2.6		
03/07/2012	16:14:20	-120	0.0	8.43	2.7		
03/07/2012	16:16:25	-17	3.4	8.44	6.4		
03/07/2012	16:18:30	-5	3.4	8.43	13.5		
03/07/2012	16:20:35	-11	3.4	8.43	20.6		
03/07/2012	16:22:40	-89	0.0	8.43	25.9		
03/07/2012	16:24:45	-88	0.0	8.43	26.0		
03/07/2012	16:24:50					Reset Total, Vol = 25.98 bbl	
03/07/2012	16:24:50					84 bbl 12.5 Lead	
03/07/2012	16:24:50					Take Wet and Dry Sample # 013118	
03/07/2012	16:24:50	-88	0.0	8.43	26.0		
03/07/2012	16:24:51					Sample = 12.5	
03/07/2012	16:24:51					Good Returns	
03/07/2012	16:24:51					Take Water Sample # 012988, 012967	
03/07/2012	16:24:51	-88	0.0	8.43	26.0		
03/07/2012	16:26:50	81	4.6	11.04	33.7		
03/07/2012	16:26:55					Start Mixing Lead Slurry	
03/07/2012	16:26:55	68	4.6	10.90	34.1		
03/07/2012	16:28:55	82	4.6	11.99	43.2		
03/07/2012	16:31:00	72	4.6	12.48	52.8		
03/07/2012	16:33:05	70	4.6	12.52	62.4		
03/07/2012	16:35:10	72	4.6	12.48	72.1		
03/07/2012	16:37:15	64	4.6	12.48	81.7		
03/07/2012	16:39:20	76	4.6	12.48	91.3		
03/07/2012	16:41:25	63	4.6	12.38	100.9		
03/07/2012	16:43:20					End Lead Slurry	
03/07/2012	16:43:20	-114	0.1	12.54	109.4		
03/07/2012	16:43:21					Reset Total, Vol = 83.43 bbl	
03/07/2012	16:43:21					31 bbl 15.8 Tail	
03/07/2012	16:43:21					Take Wet and Dry Sample # 012959	
03/07/2012	16:43:21					Sample = 15.8	
03/07/2012	16:43:21	-80	0.1	12.54	109.4		
03/07/2012	16:43:22					Good Returns	
03/07/2012	16:43:22	-109	0.0	12.54	109.4		
03/07/2012	16:43:30	-112	0.0	12.54	109.4		
03/07/2012	16:45:35	-112	0.0	12.44	109.4		
03/07/2012	16:47:40	11	2.9	15.35	111.4		
03/07/2012	16:49:16					Start Mixing Tail Slurry	
03/07/2012	16:49:16	177	4.6	15.61	118.2		
03/07/2012	16:49:45	160	4.6	15.71	120.4		
03/07/2012	16:51:50	189	4.6	15.88	129.9		
03/07/2012	16:53:54					End Tail Slurry	
03/07/2012	16:53:54	152	4.6	15.86	139.4		
03/07/2012	16:53:55					Reset Total, Vol = 30.04 bbl	
03/07/2012	16:53:55	97	4.6	15.87	139.5		

Well			Field		Job Start		Customer		Job Number	
COOK EXXON 20-5BB 20-5BB			COOK EXXON		Mar/07/2012		ENCANA		C0BA-00265	
Date	Time 24-hr clock	Treating Pressure PSI	Flow Rate B/M	Density LB/G	Volume BBL	Message				
03/07/2012	16:53:56					Start Displacement				
03/07/2012	16:53:56	148	4.6	15.87	139.5					
03/07/2012	16:53:57					Displace 83 bbl Water				
03/07/2012	16:53:57	161	4.6	15.87	139.6					
03/07/2012	16:53:59					Good Returns				
03/07/2012	16:53:59	138	4.5	15.87	139.8					
03/07/2012	16:56:00	-126	0.0	15.84	142.8					
03/07/2012	16:58:05	-96	0.0	15.88	142.8					
03/07/2012	17:00:10	65	4.5	9.79	145.7					
03/07/2012	17:02:15	87	6.6	8.57	155.7					
03/07/2012	17:04:20	76	6.5	8.43	169.5					
03/07/2012	17:06:25	90	6.5	8.42	183.1					
03/07/2012	17:08:30	171	6.5	8.42	196.7					
03/07/2012	17:10:35	150	4.2	8.43	209.5					
03/07/2012	17:12:40	214	4.2	8.42	218.3					
03/07/2012	17:14:45	179	2.3	8.42	223.4					
03/07/2012	17:16:50	190	2.3	8.43	228.2					
03/07/2012	17:18:55	816	0.0	8.43	228.7					
03/07/2012	17:21:00	784	0.0	8.43	228.7					
03/07/2012	17:23:05	-132	0.0	8.43	228.7					
03/07/2012	17:25:10	-132	0.0	8.43	228.7					
03/07/2012	17:27:05					Bump Top Plug				
03/07/2012	17:27:05					End Displacement				
03/07/2012	17:27:05	-133	0.0	8.43	228.7					
03/07/2012	17:27:07					Bump Plug to 900 psi				
03/07/2012	17:27:07					Bled Off Pressure				
03/07/2012	17:27:07					0.5 bbl Back				
03/07/2012	17:27:07					Floats Held				
03/07/2012	17:27:07					43 bbl Cement to Surface				
03/07/2012	17:27:07					Rig Down				
03/07/2012	17:27:07	-132	0.0	8.43	228.7					

Post Job Summary

Average Pump Rates, bbl/min					Volume of Fluid Injected, bbl			
Slurry 2.7	N2	Mud 0.0	Maximum Rate 9.3		Total Slurry 228.7	Mud 0.0	Spacer 34.0	N2
Treating Pressure Summary, psi					Breakdown Fluid			
Maximum 3012	Final 0	Average 303	Bump Plug to 900	Breakdown	Type	Volume	Density	
Avg. N2 Percent		Designed Slurry Volume 115.0 bbl		Displacement 89.2 bbl	Mix Water Temp 70 degF	Cement Circulated to Surface? <input checked="" type="checkbox"/>	Volume	
						Washed Thru Perfs <input type="checkbox"/>	To	
Customer or Authorized Representative VLAD KOCHETOV			Schlumberger Supervisor Tom Leduc			Circulation Lost <input type="checkbox"/>	Job Completed <input checked="" type="checkbox"/>	
						-	-	