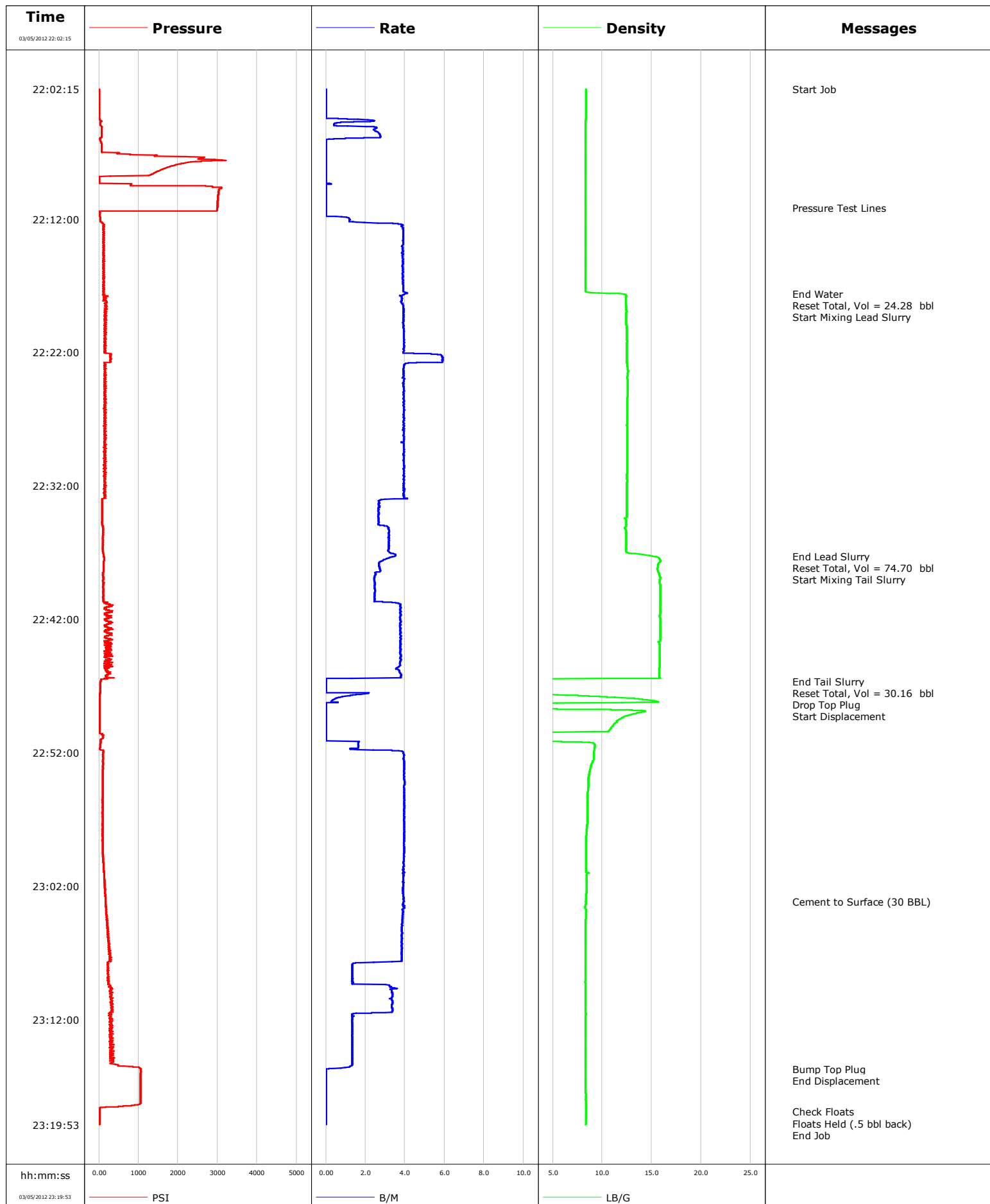


<b>Well</b>	Cook Carpenter 20-3C PB-2	<b>Client</b>	Encana
<b>Field</b>	Mamm Creek	<b>SIR No.</b>	C1SM-00001
<b>Engineer</b>		<b>Job Type</b>	Surface
<b>Country</b>	United States	<b>Job Date</b>	03-05-2012





# Cementing Service Report

					Customer Encana			Job Number C1SM-00001						
Well Cook Carpenter 20-3C PB-2				Location (legal)			Schlumberger Location			Job Start Mar/05/2012				
Field Mamm Creek		Formation Name/Type			Deviation		Bit Size		Well MD		Well TVD			
County		State/Province Colorado			BHP		BHST		BHCT		Pore Press. Gradient			
Well Master		API/UWI												
Rig Name		Drilled For Gas		Service Via Land		Casing/Liner								
						Depth, ft		Size, in		Weight, lb/ft		Grade	Thread	
Offshore Zone		Well Class New		Well Type Exploration		1030.8		9.630		36.0		K55	8RD	
						0.0		0.000		0.0				
Drilling Fluid Type		Max. Density		Plastic Viscosity		Tubing/Drill Pipe								
						Depth,		Size,		Weight,		Grade		Thread
Service Line Cementing		Job Type Surface												
Max. Allowed Tub. Press		Max. Allowed Ann. Press		WH Connection		Perforations/Open Hole								
						Top,		Bottom,				No. of Shots		Total Interval
Service Instructions														
						Treat Down Casing		Displacement 76.2 bbl		Packer Type		Packer Depth		
						Tubing Vol.		Casing Vol. 79.0 bbl		Annular Vol. 57.5 bbl		Openhole Vol.		
Casing/Tubing Secured <input checked="" type="checkbox"/>		1 Hole Vol. Circulated prior to Cement <input checked="" type="checkbox"/>				Casing Tools			Squeeze Job					
Lift Pressure						Shoe Type Guide			Squeeze Type					
Pipe Rotated <input type="checkbox"/>		Pipe Reciprocated <input type="checkbox"/>				Shoe Depth 1030.8 ft			Tool Type					
No. Centralizers		Top Plugs 1		Bottom Plugs		Stage Tool Type			Tool Depth					
Cement Head Type Single						Stage Tool Depth			Tail Pipe Size					
Job Scheduled For Mar/05/2012		Arrived on Location Mar/05/2012		Leave Location Mar/05/2012		Collar Type Float			Tail Pipe Depth					
						Collar Depth 986.2 ft			Sqz. Total Vol.					
Date	Time 24-hr clock	Treating Pressure PSI	Flow Rate B/M	Density LB/G	Volume BBL	Stage BBL	Message							
03/05/2012	22:02:15	7	0.0	8.34	0.0	0.0								
03/05/2012	22:02:17						Start Job							
03/05/2012	22:02:17	7	0.0	8.34	0.0	0.0								
03/05/2012	22:04:45	49	0.8	8.32	0.5	0.5								
03/05/2012	22:07:15	1431	0.0	8.33	3.0	3.0								
03/05/2012	22:09:45	3041	0.0	8.33	3.0	3.0								
03/05/2012	22:11:09						Pressure Test Lines							
03/05/2012	22:11:09	2991	0.0	8.33	3.0	3.0								
03/05/2012	22:12:15	76	1.6	8.33	3.6	3.6								
03/05/2012	22:14:45	110	3.9	8.32	13.2	13.2								
03/05/2012	22:17:15	99	3.9	8.32	22.9	22.9								
03/05/2012	22:17:34						End Water							
03/05/2012	22:17:34	116	4.1	10.80	24.1	24.1								
03/05/2012	22:17:36						Reset Total, Vol = 24.28 bbl							
03/05/2012	22:17:36	111	4.1	11.76	24.3	24.3								
03/05/2012	22:17:38						Start Mixing Lead Slurry							
03/05/2012	22:17:38	137	4.0	12.16	24.4	0.1								
03/05/2012	22:19:45	176	3.9	12.45	32.7	8.4								
03/05/2012	22:22:15	291	5.9	12.49	42.8	18.5								
03/05/2012	22:24:45	131	3.9	12.56	53.7	29.4								
03/05/2012	22:27:15	170	3.9	12.53	63.5	39.2								

Well Cook Carpenter 20-3C PB-2			Field Mamm Creek		Job Start Mar/05/2012		Customer Encana	Job Number C1SM-00001
Date	Time 24-hr clock	Treating Pressure PSI	Flow Rate B/M	Density LB/G	Volume BBL	Stage BBL	Message	
03/05/2012	22:32:15	158	3.9	12.47	83.2	58.9		
03/05/2012	22:34:45	72	2.7	12.43	90.8	66.5		
03/05/2012	22:37:15	122	3.5	15.04	98.7	74.4		
03/05/2012	22:37:16						End Lead Slurry	
03/05/2012	22:37:16	122	3.5	15.04	98.8	74.5		
03/05/2012	22:37:20						Reset Total, Vol = 74.70 bbl	
03/05/2012	22:37:20	122	3.4	15.57	99.0	74.7		
03/05/2012	22:37:22						Start Mixing Tail Slurry	
03/05/2012	22:37:22	124	3.3	15.66	99.1	0.1		
03/05/2012	22:39:45	119	2.5	15.85	105.3	6.4		
03/05/2012	22:42:15	343	3.8	15.85	113.5	14.5		
03/05/2012	22:44:45	193	3.8	15.79	122.9	23.9		
03/05/2012	22:46:38						End Tail Slurry	
03/05/2012	22:46:38	42	0.0	0.05	129.1	30.2		
03/05/2012	22:46:41						Reset Total, Vol = 30.16 bbl	
03/05/2012	22:46:41	38	0.0	0.01	129.1	30.2		
03/05/2012	22:46:43						Drop Top Plug	
03/05/2012	22:46:43	37	0.0	-0.00	129.1	0.0		
03/05/2012	22:46:45						Start Displacement	
03/05/2012	22:46:45	35	0.0	-0.00	129.1	0.0		
03/05/2012	22:47:15	26	0.0	0.25	129.1	0.0		
03/05/2012	22:49:45	22	0.0	11.37	129.8	0.6		
03/05/2012	22:52:15	99	3.9	9.14	132.5	3.4		
03/05/2012	22:54:45	90	3.9	8.56	142.4	13.3		
03/05/2012	22:57:15	87	4.0	8.51	152.3	23.2		
03/05/2012	22:59:45	96	3.9	8.34	162.2	33.1		
03/05/2012	23:02:15	160	3.9	8.39	172.0	42.9		
03/05/2012	23:03:09						Cement to Surface (30 BBL)	
03/05/2012	23:03:09	165	4.0	8.34	175.5	46.4		
03/05/2012	23:04:45	207	3.9	8.33	181.8	52.6		
03/05/2012	23:07:15	279	3.8	8.33	191.4	62.2		
03/05/2012	23:09:45	301	3.3	8.33	196.6	67.4		
03/05/2012	23:12:15	309	1.3	8.33	203.5	74.3		
03/05/2012	23:14:45	312	1.3	8.33	206.8	77.6		
03/05/2012	23:15:44						Bump Top Plug	
03/05/2012	23:15:44	1069	0.0	8.33	208.0	78.8		
03/05/2012	23:15:45						End Displacement	
03/05/2012	23:15:45	1069	0.0	8.33	208.0	78.8		
03/05/2012	23:17:15	1049	0.0	8.33	208.0	78.8		
03/05/2012	23:18:55						Check Floats	
03/05/2012	23:18:55						Floats Held (.5 bbl back)	
03/05/2012	23:18:55	16	0.0	8.33	208.0	78.8		
03/05/2012	23:19:31						End Job	
03/05/2012	23:19:31	19	0.0	8.33	208.0	78.8		

<b>Well</b> Cook Carpenter 20-3C PB-2	<b>Field</b> Mamm Creek	<b>Job Start</b> Mar/05/2012	<b>Customer</b> Encana	<b>Job Number</b> C1SM-00001
--	----------------------------	---------------------------------	---------------------------	---------------------------------

Post Job Summary

Average Pump Rates,					Volume of Fluid Injected,			
Slurry	N2	Mud	Maximum Rate		Total Slurry	Mud	Spacer	N2
Treating Pressure Summary,					Breakdown Fluid			
Maximum	Final	Average	Bump Plug to	Breakdown	Type	Volume		Density
Avg. N2 Percent	Designed Slurry Volume 106.0 bbl		Displacement	Mix Water Temp 60 degF	Cement Circulated to Surface?	<input type="checkbox"/>		Volume
					Washed Thru Perfs	<input type="checkbox"/>		To
Customer or Authorized Representative Erasamo Parras			Schlumberger Supervisor			Circulation Lost	<input type="checkbox"/>	Job Completed <input type="checkbox"/>
					-		-	