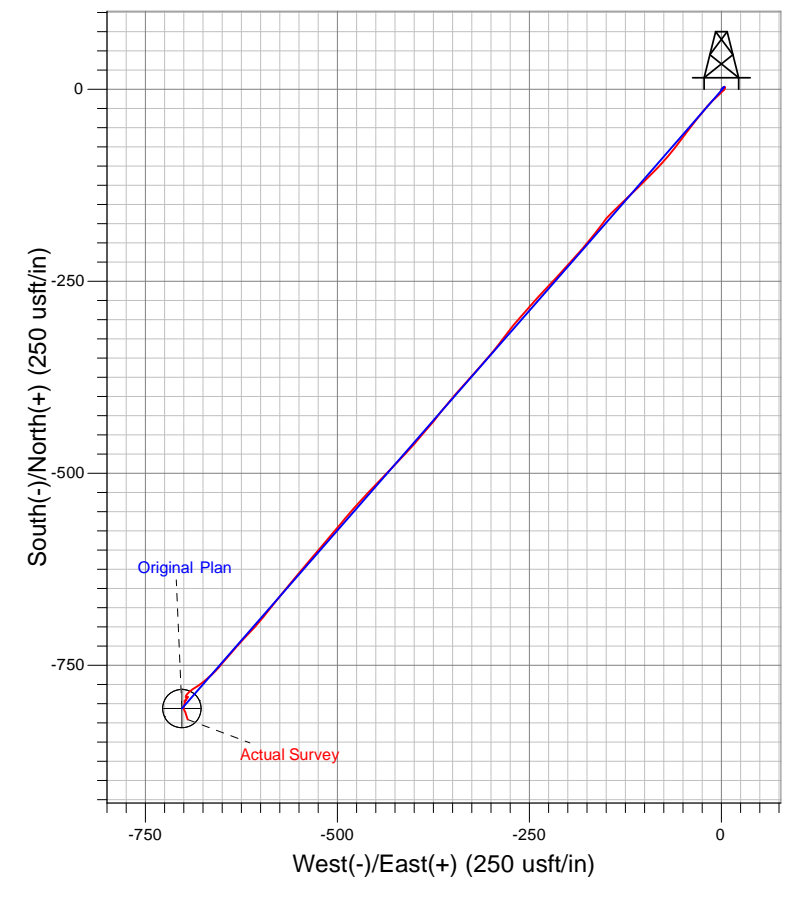
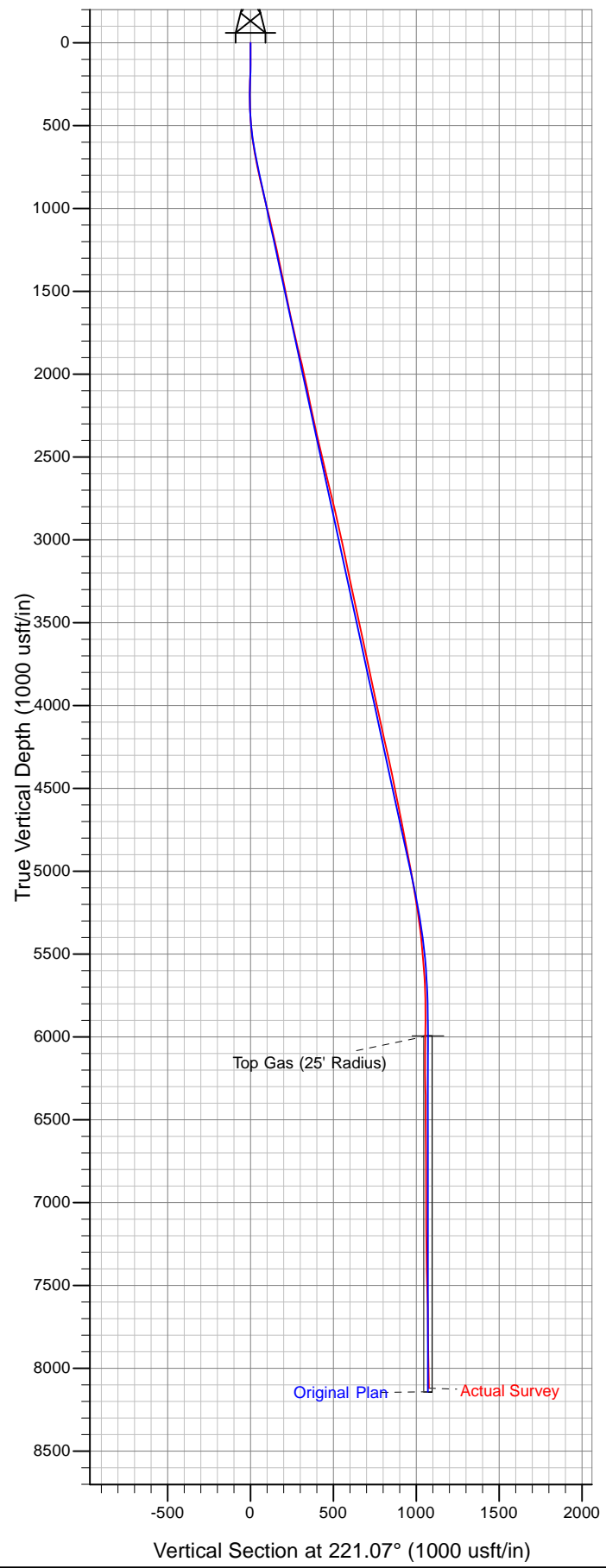




Well Name: PA 541-29  
 Surface Location: PA 11-28 Pad  
 North American Datum 1983 , US State Plane 1983 . Colorado Central Zone  
 Ground Elevation: 5965.00

| +N/-S | +E/-W | Northing   | Easting    | Latitude | Longitude  | Slot |
|-------|-------|------------|------------|----------|------------|------|
| 0.00  | 0.00  | 1617374.90 | 2291362.80 | 39.50158 | -108.01163 | C1   |

KELLY BUSHING @ 5991.00usft (Nabors 574 (26' RKB) kjs)



Azimuths to True North  
 Magnetic North: 10.31°  
 Magnetic Field  
 Strength: 52209.9snT  
 Dip Angle: 65.73°  
 Date: 11/11/2011  
 Model: IGRF2010