

T5N, R91W, 6th P.M.  
S89°03'W - 5163.84' (G.L.O.)

SWEP1 LP

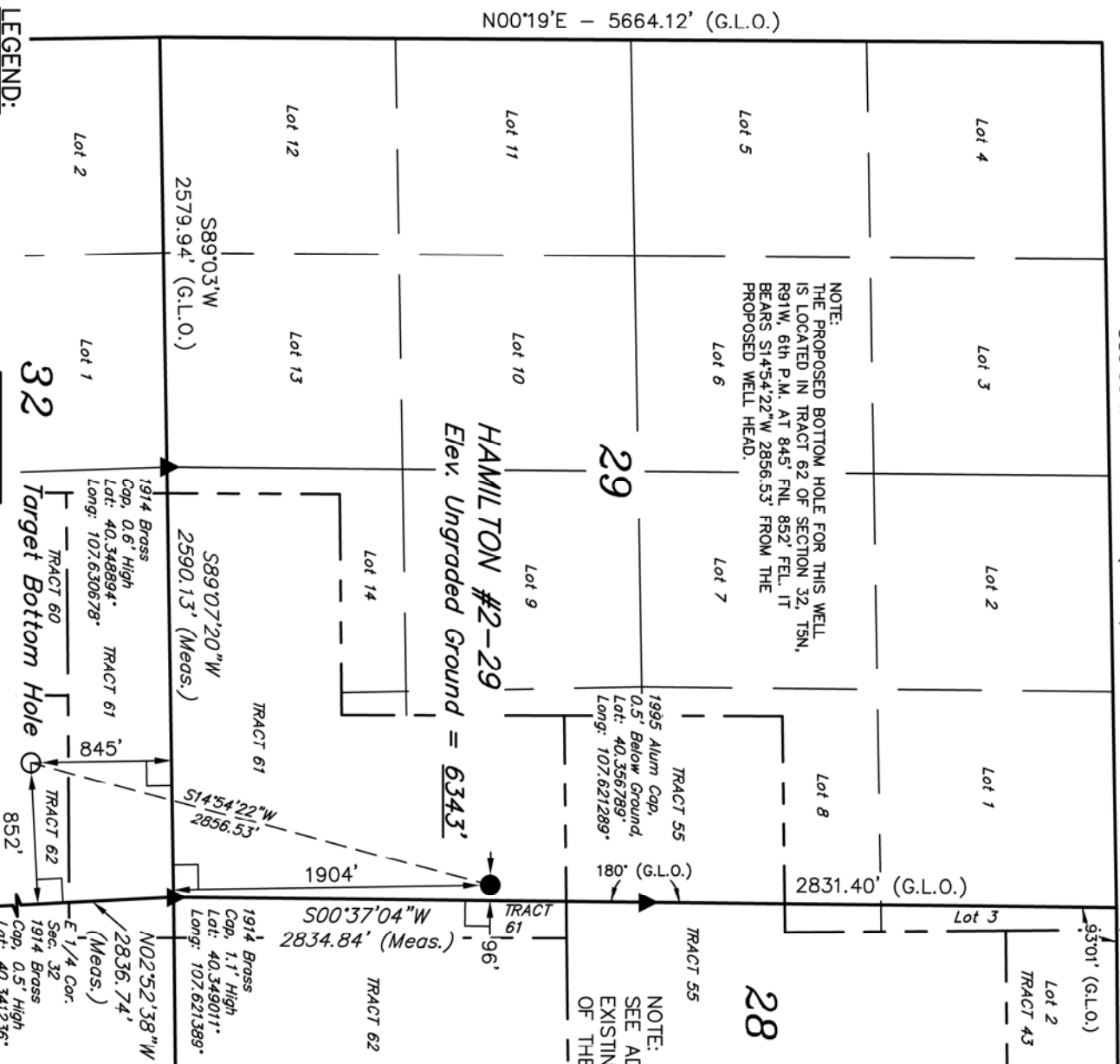
Well location, HAMILTON #2-29, located as shown in TRACT 61 of Section 29, T5N, R91W, 6th P.M., Moffat County, Colorado.

BASIS OF ELEVATION

SPOT ELEVATION AT THE NORTHEAST CORNER OF SECTION 31, T5N, R90W, 6th P.M. TAKEN FROM THE HAMILTON QUADRANGLE, COLORADO, MOFFAT COUNTY, 7.5 MINUTE QUAD (TOPOGRAPHIC MAP) PUBLISHED BY THE UNITED STATES DEPARTMENT OF THE INTERIOR, GEOLOGICAL SURVEY. SAID ELEVATION IS MARKED AS BEING 6664 FEET.

BASIS OF BEARINGS

BASIS OF BEARINGS IS A G.P.S. OBSERVATION.



LEGEND:

- 90° SYMBOL
- PROPOSED WELL HEAD.
- SECTION CORNERS LOCATED

PDOP = 1.3

NAD 83 (TARGET BOTTOM HOLE)	NAD 83 (SURFACE LOCATION)
LATITUDE = 40°20'47.96" (40.346656)	LATITUDE = 40°21'15.24" (40.354233)
LONGITUDE = 107°37'27.45" (107.624292)	LONGITUDE = 107°37'18.00" (107.621667)

NAD 27 (TARGET BOTTOM HOLE)	NAD 27 (SURFACE LOCATION)
LATITUDE = 40°20'48.06" (40.346683)	LATITUDE = 40°21'15.34" (40.354261)
LONGITUDE = 107°37'28.21" (107.623669)	LONGITUDE = 107°37'15.76" (107.621044)

32

Target Bottom Hole

852'

1914 Brass

Cop. 0.6" High

Lot: 40.346894

Long: 107.630678

TRACT 61

1914 Brass

Cop. 0.5" High

Lot: 40.341236

Long: 107.620867

TRACT 62

1914 Brass

Cop. 1.1" High

Lot: 40.349011

Long: 107.621389

TRACT 62

1914 Brass

Cop. 0.5" High

Lot: 40.341236

Long: 107.620867

29

HAMILTON #2-29

Elev. Ungraded Ground = 6343'

1914 Brass

Cop. 1.1" High

Lot: 40.349011

Long: 107.621389

TRACT 62

1914 Brass

Cop. 0.5" High

Lot: 40.341236

Long: 107.620867

TRACT 61

1914 Brass

Cop. 0.6" High

Lot: 40.346894

Long: 107.630678

TRACT 61

1914 Brass

Cop. 0.5" High

Lot: 40.341236

Long: 107.620867

28

NOTE: SEE ADDENDUM TO LEGAL PLAT FOR EXISTING IMPROVEMENTS WITHIN 400' OF THE PROPOSED DISTURBANCE.

180' (G.L.O.)

500°37'04"W

2834.84' (Meas.)

TRACT 61

1914 Brass

Cop. 1.1" High

Lot: 40.349011

Long: 107.621389

TRACT 62

1914 Brass

Cop. 0.5" High

Lot: 40.341236

Long: 107.620867

TRACT 61

1914 Brass

Cop. 0.6" High

Lot: 40.346894

Long: 107.630678

TRACT 61

1914 Brass

Cop. 0.5" High

28

NOTE: SEE ADDENDUM TO LEGAL PLAT FOR EXISTING IMPROVEMENTS WITHIN 400' OF THE PROPOSED DISTURBANCE.

180' (G.L.O.)

500°37'04"W

2834.84' (Meas.)

TRACT 61

1914 Brass

Cop. 1.1" High

Lot: 40.349011

Long: 107.621389

TRACT 62

1914 Brass

Cop. 0.5" High

Lot: 40.341236

Long: 107.620867

TRACT 61

1914 Brass

Cop. 0.6" High

Lot: 40.346894

Long: 107.630678

TRACT 61

1914 Brass

Cop. 0.5" High

28

NOTE: SEE ADDENDUM TO LEGAL PLAT FOR EXISTING IMPROVEMENTS WITHIN 400' OF THE PROPOSED DISTURBANCE.

180' (G.L.O.)

500°37'04"W

2834.84' (Meas.)

TRACT 61

1914 Brass

Cop. 1.1" High

Lot: 40.349011

Long: 107.621389

TRACT 62

1914 Brass

Cop. 0.5" High

Lot: 40.341236

Long: 107.620867

TRACT 61

1914 Brass

Cop. 0.6" High

Lot: 40.346894

Long: 107.630678

TRACT 61

1914 Brass

Cop. 0.5" High

28

NOTE: SEE ADDENDUM TO LEGAL PLAT FOR EXISTING IMPROVEMENTS WITHIN 400' OF THE PROPOSED DISTURBANCE.

180' (G.L.O.)

500°37'04"W

2834.84' (Meas.)

TRACT 61

1914 Brass

Cop. 1.1" High

Lot: 40.349011

Long: 107.621389

TRACT 62

1914 Brass

Cop. 0.5" High

Lot: 40.341236

Long: 107.620867

TRACT 61

1914 Brass

Cop. 0.6" High

Lot: 40.346894

Long: 107.630678

TRACT 61

1914 Brass

Cop. 0.5" High

28

NOTE: SEE ADDENDUM TO LEGAL PLAT FOR EXISTING IMPROVEMENTS WITHIN 400' OF THE PROPOSED DISTURBANCE.

180' (G.L.O.)

500°37'04"W

2834.84' (Meas.)

TRACT 61

1914 Brass

Cop. 1.1" High

Lot: 40.349011

Long: 107.621389

TRACT 62

1914 Brass

Cop. 0.5" High

Lot: 40.341236

Long: 107.620867

TRACT 61

1914 Brass

Cop. 0.6" High

Lot: 40.346894

Long: 107.630678

TRACT 61

1914 Brass

Cop. 0.5" High

28

NOTE: SEE ADDENDUM TO LEGAL PLAT FOR EXISTING IMPROVEMENTS WITHIN 400' OF THE PROPOSED DISTURBANCE.

180' (G.L.O.)

500°37'04"W

2834.84' (Meas.)

TRACT 61

1914 Brass

Cop. 1.1" High

Lot: 40.349011

Long: 107.621389

TRACT 62

1914 Brass

Cop. 0.5" High

Lot: 40.341236

Long: 107.620867

TRACT 61

1914 Brass

Cop. 0.6" High

Lot: 40.346894

Long: 107.630678

TRACT 61

1914 Brass

Cop. 0.5" High

28

NOTE: SEE ADDENDUM TO LEGAL PLAT FOR EXISTING IMPROVEMENTS WITHIN 400' OF THE PROPOSED DISTURBANCE.

180' (G.L.O.)

500°37'04"W

2834.84' (Meas.)

TRACT 61

1914 Brass

Cop. 1.1" High

Lot: 40.349011

Long: 107.621389

TRACT 62

1914 Brass

Cop. 0.5" High

Lot: 40.341236

Long: 107.620867

TRACT 61

1914 Brass

Cop. 0.6" High

Lot: 40.346894

Long: 107.630678

TRACT 61

1914 Brass

Cop. 0.5" High

28

NOTE: SEE ADDENDUM TO LEGAL PLAT FOR EXISTING IMPROVEMENTS WITHIN 400' OF THE PROPOSED DISTURBANCE.

180' (G.L.O.)

500°37'04"W

2834.84' (Meas.)

TRACT 61

1914 Brass

Cop. 1.1" High

Lot: 40.349011

Long: 107.621389

TRACT 62

1914 Brass

Cop. 0.5" High

Lot: 40.341236

Long: 107.620867

TRACT 61

1914 Brass

Cop. 0.6" High

Lot: 40.346894

Long: 107.630678

TRACT 61

1914 Brass

Cop. 0.5" High

28

NOTE: SEE ADDENDUM TO LEGAL PLAT FOR EXISTING IMPROVEMENTS WITHIN 400' OF THE PROPOSED DISTURBANCE.

180' (G.L.O.)

500°37'04"W

2834.84' (Meas.)

TRACT 61

1914 Brass

Cop. 1.1" High

Lot: 40.349011

Long: 107.621389

TRACT 62

1914 Brass

Cop. 0.5" High

Lot: 40.341236

Long: 107.620867

TRACT 61

1914 Brass

Cop. 0.6" High

Lot: 40.346894

Long: 107.630678

TRACT 61

1914 Brass

Cop. 0.5" High

28

NOTE: SEE ADDENDUM TO LEGAL PLAT FOR EXISTING IMPROVEMENTS WITHIN 400' OF THE PROPOSED DISTURBANCE.

180' (G.L.O.)

500°37'04"W

2834.84' (Meas.)

TRACT 61

1914 Brass

Cop. 1.1" High

Lot: 40.349011

Long: 107.621389

TRACT 62

1914 Brass

Cop. 0.5" High

# SWEPI LP

## ADDENDUM TO LEGAL PLAT FOR HAMILTON #1-29 & HAMILTON #2-29 SECTION 29, T5N, R91W, 6th P.M. TRACT 61

SCALE: 1" = 200'  
DATE: 05-02-12  
DRAWN BY: J.J.  
REVISED: 06-01-12  
REV: 06-07-12 J.M.H

