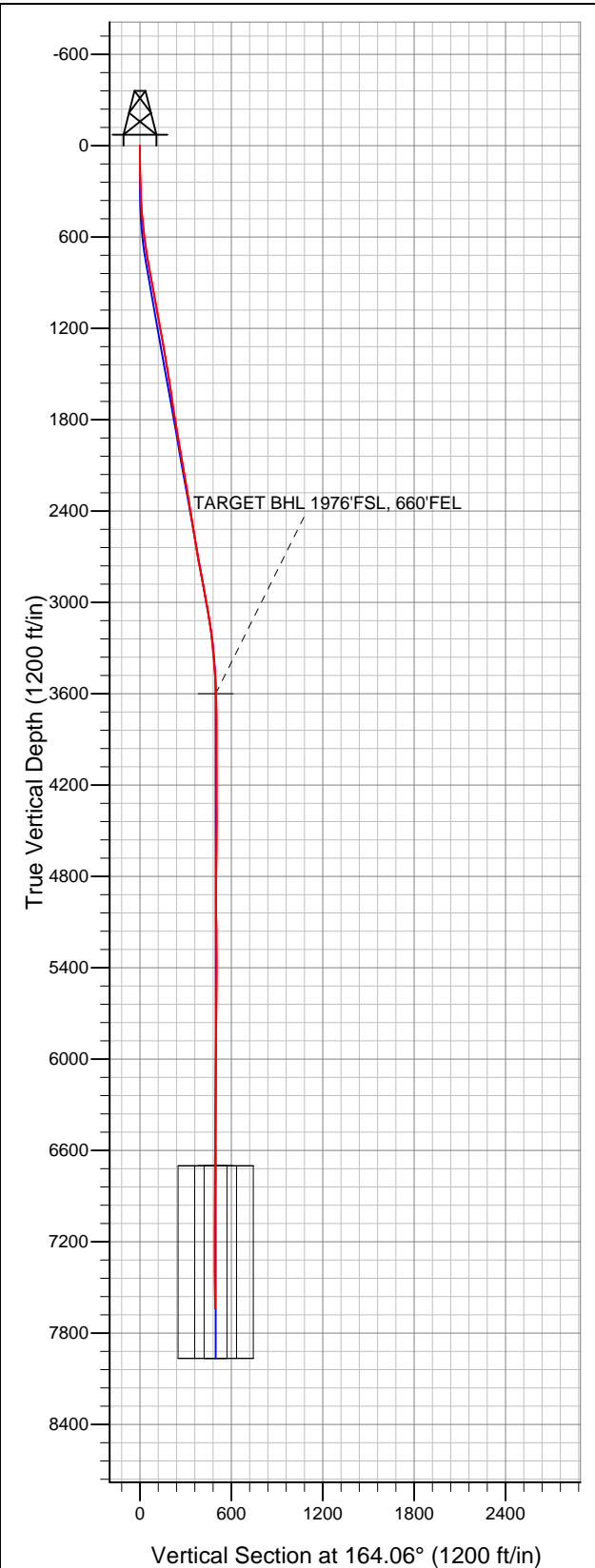


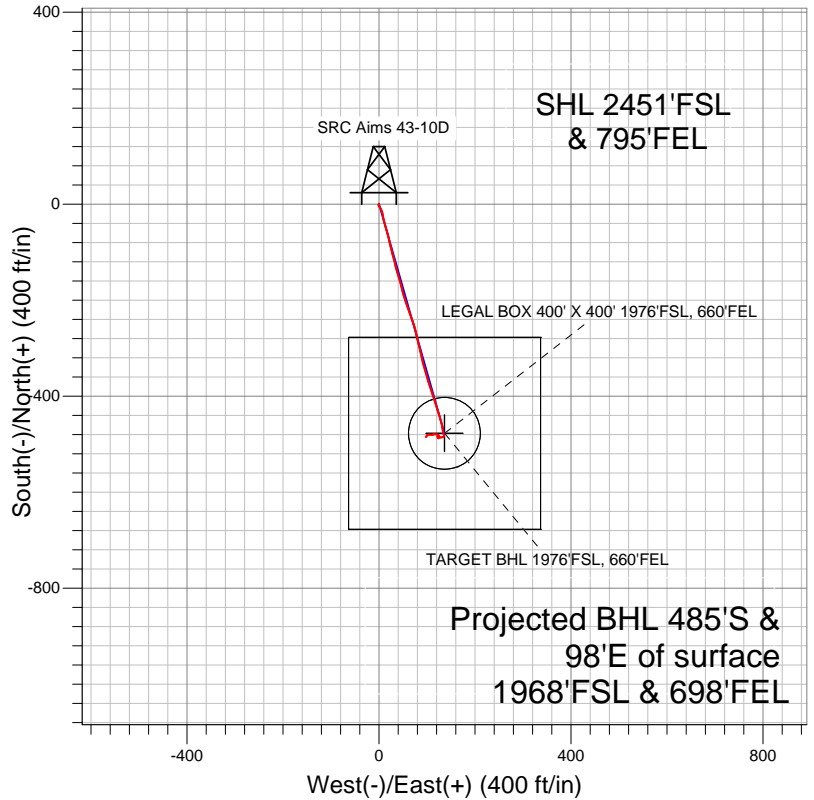
Well Name: SRC Aims 43-10D

Surface Location: SRC Aims/GCC Pad Sec.10-T5N-R66W
 North American Datum 1983 US State Plane 1983Colorado Northern Zone
 Ground Elevation: 4858.0

+N/-S	+E/-W	Northing	Easting	Latitude	Longitude	Slot
0.0	0.0	1394383.86	3206290.74	40.413620	-104.759149	
		Original Well Elev	WELL @ 4871.0ft (Original Well Elev)			



Synergy Resources



LEGEND

- Survey #1
- + SRC Aims 43-10D, Wellbore #1, Plan #2 (3-19-12) R V0
- Wellbore #1

Final Survey Plot

Projected Final Survey -
 7678'MD & 7638'TVD @ 493'VS
 0.70 deg Inc 192.20 deg AZ

Project: SEC.10-T5N-R66W
 Site: SRC Aims/GCC Pad Sec.10-T5N-R66W
 Well: SRC Aims 43-10D
 Plan: Wellbore #1



Synergy Resources

SEC.10-T5N-R66W

SRC Aims/GCC Pad Sec.10-T5N-R66W

SRC Aims 43-10D

Wellbore #1

Survey: Survey #1

Standard Survey Report

29 March, 2012

Company:	Synergy Resources	Local Co-ordinate Reference:	Well SRC Aims 43-10D
Project:	SEC.10-T5N-R66W	TVD Reference:	WELL @ 4871.0ft (Original Well Elev)
Site:	SRC Aims/GCC Pad Sec.10-T5N-R66W	MD Reference:	WELL @ 4871.0ft (Original Well Elev)
Well:	SRC Aims 43-10D	North Reference:	True
Wellbore:	Wellbore #1	Survey Calculation Method:	Minimum Curvature
Design:	Wellbore #1	Database:	Landmark

Project	SEC.10-T5N-R66W, Weld County, Colorado		
Map System:	US State Plane 1983	System Datum:	Mean Sea Level
Geo Datum:	North American Datum 1983		Using Well Reference Point
Map Zone:	Colorado Northern Zone		Using geodetic scale factor

Site	SRC Aims/GCC Pad Sec.10-T5N-R66W				
Site Position:		Northing:	1,394,413.34 ft	Latitude:	40.413700
From:	Lat/Long	Easting:	3,206,329.28 ft	Longitude:	-104.759010
Position Uncertainty:	0.0 ft	Slot Radius:	"	Grid Convergence:	0.48 °

Well	SRC Aims 43-10D					
Well Position	+N/-S	0.0 ft	Northing:	1,394,383.86 ft	Latitude:	40.413620
	+E/-W	0.0 ft	Easting:	3,206,290.74 ft	Longitude:	-104.759149
Position Uncertainty		0.0 ft	Wellhead Elevation:	ft	Ground Level:	4,858.0 ft

Wellbore	Wellbore #1				
Magnetics	Model Name	Sample Date	Declination (°)	Dip Angle (°)	Field Strength (nT)
	IGRF2010	3/19/2012	8.76	67.04	53,059

Design	Wellbore #1				
Audit Notes:					
Version:	1.0	Phase:	ACTUAL	Tie On Depth:	0.0
Vertical Section:	Depth From (TVD) (ft)	+N/-S (ft)	+E/-W (ft)	Direction (°)	
	3,600.0	0.0	0.0	164.06	

Survey Program		Date	3/29/2012		
From (ft)	To (ft)	Survey (Wellbore)	Tool Name	Description	
82.0	7,678.0	Survey #1 (Wellbore #1)	MWD	MWD - Standard	

Survey									
Measured Depth (ft)	Inclination (°)	Azimuth (°)	Vertical Depth (ft)	+N-S (ft)	+E-W (ft)	Vertical Section (ft)	Dogleg Rate (°/100ft)	Build Rate (°/100ft)	Turn Rate (°/100ft)
0.0	0.00	0.00	0.0	0.0	0.0	0.0	0.00	0.00	0.00
82.0	0.80	252.50	82.0	-0.2	-0.5	0.0	0.98	0.98	0.00
172.0	1.40	172.30	172.0	-1.5	-1.0	1.1	1.66	0.67	-89.11
262.0	1.80	150.20	262.0	-3.8	-0.1	3.6	0.81	0.44	-24.56
356.0	2.70	143.00	355.9	-6.8	1.9	7.1	1.00	0.96	-7.66
448.0	4.40	155.60	447.7	-11.8	4.7	12.6	2.02	1.85	13.70
540.0	6.50	168.10	539.3	-20.1	7.2	21.3	2.61	2.28	13.59
631.0	7.40	169.00	629.6	-30.9	9.4	32.3	1.00	0.99	0.99
695.0	8.90	164.40	693.0	-39.7	11.5	41.3	2.55	2.34	-7.19
788.0	9.90	162.20	784.7	-54.2	15.9	56.5	1.14	1.08	-2.37
881.0	10.80	167.60	876.2	-70.3	20.2	73.2	1.42	0.97	5.81
975.0	10.60	166.00	968.6	-87.3	24.2	90.6	0.38	-0.21	-1.70
1,069.0	10.30	166.50	1,061.0	-103.9	28.2	107.7	0.33	-0.32	0.53

Company:	Synergy Resources	Local Co-ordinate Reference:	Well SRC Aims 43-10D
Project:	SEC.10-T5N-R66W	TVD Reference:	WELL @ 4871.0ft (Original Well Elev)
Site:	SRC Aims/GCC Pad Sec.10-T5N-R66W	MD Reference:	WELL @ 4871.0ft (Original Well Elev)
Well:	SRC Aims 43-10D	North Reference:	True
Wellbore:	Wellbore #1	Survey Calculation Method:	Minimum Curvature
Design:	Wellbore #1	Database:	Landmark

Survey										
Measured Depth (ft)	Inclination (°)	Azimuth (°)	Vertical Depth (ft)	+N/-S (ft)	+E/-W (ft)	Vertical Section (ft)	Dogleg Rate (°/100ft)	Build Rate (°/100ft)	Turn Rate (°/100ft)	
1,163.0	10.60	165.70	1,153.4	-120.4	32.3	124.7	0.35	0.32	-0.85	
1,256.0	10.00	165.80	1,245.0	-136.6	36.4	141.3	0.65	-0.65	0.11	
1,350.0	9.30	160.60	1,337.6	-151.6	41.0	157.1	1.19	-0.74	-5.53	
1,444.0	9.70	166.90	1,430.3	-166.5	45.3	172.5	1.18	0.43	6.70	
1,537.0	9.30	165.00	1,522.1	-181.4	49.0	187.9	0.55	-0.43	-2.04	
1,631.0	8.40	161.10	1,614.9	-195.2	53.2	202.3	1.15	-0.96	-4.15	
1,725.0	8.10	163.20	1,708.0	-208.1	57.3	215.8	0.45	-0.32	2.23	
1,818.0	9.20	159.70	1,799.9	-221.3	61.8	229.8	1.31	1.18	-3.76	
1,912.0	9.80	159.90	1,892.6	-235.9	67.2	245.3	0.64	0.64	0.21	
2,006.0	9.50	161.60	1,985.3	-250.8	72.4	261.0	0.44	-0.32	1.81	
2,100.0	10.00	167.80	2,077.9	-266.1	76.5	276.9	1.24	0.53	6.60	
2,193.0	9.30	166.70	2,169.6	-281.3	80.0	292.4	0.78	-0.75	-1.18	
2,287.0	9.80	165.50	2,262.3	-296.4	83.7	308.0	0.57	0.53	-1.28	
2,381.0	9.10	167.40	2,355.0	-311.4	87.3	323.4	0.82	-0.74	2.02	
2,474.0	9.10	164.80	2,446.9	-325.7	90.9	338.1	0.44	0.00	-2.80	
2,568.0	9.40	165.80	2,539.6	-340.3	94.7	353.2	0.36	0.32	1.06	
2,662.0	9.40	165.10	2,632.4	-355.2	98.6	368.6	0.12	0.00	-0.74	
2,756.0	9.70	163.20	2,725.1	-370.2	102.8	384.2	0.46	0.32	-2.02	
2,849.0	10.90	161.80	2,816.6	-386.0	107.8	400.8	1.32	1.29	-1.51	
2,943.0	11.30	161.30	2,908.8	-403.2	113.6	418.9	0.44	0.43	-0.53	
3,037.0	9.80	161.30	3,001.2	-419.5	119.1	436.1	1.60	-1.60	0.00	
3,130.0	9.00	161.10	3,093.0	-433.9	124.0	451.2	0.86	-0.86	-0.22	
3,224.0	7.70	165.00	3,186.0	-446.9	128.0	464.9	1.51	-1.38	4.15	
3,318.0	5.70	167.60	3,279.3	-457.6	130.6	475.8	2.15	-2.13	2.77	
3,412.0	4.70	171.10	3,372.9	-465.9	132.2	484.3	1.12	-1.06	3.72	
3,505.0	4.20	168.10	3,465.7	-473.0	133.5	491.5	0.59	-0.54	-3.23	
3,599.0	2.90	168.50	3,559.5	-478.7	134.7	497.3	1.38	-1.38	0.43	
3,639.5	1.98	165.61	3,599.9	-480.4	135.1	499.0	2.28	-2.26	-7.15	
TARGET BHL 1976'FSL, 660'FEL										
3,693.0	0.80	151.60	3,653.4	-481.6	135.5	500.3	2.28	-2.21	-26.16	
3,786.0	0.40	201.20	3,746.4	-482.5	135.7	501.2	0.67	-0.43	53.33	
3,880.0	0.50	193.60	3,840.4	-483.2	135.5	501.8	0.12	0.11	-8.09	
3,974.0	0.60	220.90	3,934.4	-484.0	135.0	502.5	0.29	0.11	29.04	
4,068.0	1.00	246.40	4,028.4	-484.7	134.0	502.8	0.56	0.43	27.13	
4,161.0	0.90	252.20	4,121.4	-485.2	132.5	503.0	0.15	-0.11	6.24	
4,255.0	0.60	266.90	4,215.4	-485.5	131.3	502.9	0.38	-0.32	15.64	
4,349.0	0.50	261.80	4,309.4	-485.6	130.4	502.7	0.12	-0.11	-5.43	
4,442.0	0.50	265.20	4,402.4	-485.7	129.6	502.6	0.03	0.00	3.66	
4,536.0	0.40	258.50	4,496.4	-485.8	128.9	502.5	0.12	-0.11	-7.13	
4,630.0	0.60	278.00	4,590.4	-485.8	128.1	502.3	0.28	0.21	20.74	
4,723.0	1.00	277.30	4,683.4	-485.6	126.8	501.7	0.43	0.43	-0.75	
4,817.0	1.90	284.00	4,777.3	-485.1	124.5	500.6	0.97	0.96	7.13	
4,911.0	1.20	285.20	4,871.3	-484.5	122.0	499.3	0.75	-0.74	1.28	
5,005.0	0.50	139.50	4,965.3	-484.5	121.3	499.2	1.74	-0.74	-155.00	
5,098.0	0.90	130.30	5,058.3	-485.3	122.1	500.2	0.45	0.43	-9.89	
5,192.0	0.70	121.70	5,152.3	-486.1	123.2	501.2	0.25	-0.21	-9.15	
5,286.0	0.40	154.80	5,246.3	-486.7	123.8	502.0	0.45	-0.32	35.21	
5,379.0	0.30	146.30	5,339.3	-487.2	124.1	502.5	0.12	-0.11	-9.14	
5,473.0	0.10	184.70	5,433.3	-487.5	124.2	502.8	0.24	-0.21	40.85	
5,567.0	0.30	284.10	5,527.3	-487.5	124.0	502.8	0.35	0.21	105.74	
5,661.0	0.20	298.20	5,621.3	-487.3	123.6	502.6	0.12	-0.11	15.00	
5,755.0	1.10	38.60	5,715.3	-486.6	124.0	501.9	1.23	0.96	106.81	
5,849.0	1.10	21.70	5,809.2	-485.0	124.9	500.7	0.34	0.00	-17.98	
5,942.0	0.90	351.60	5,902.2	-483.5	125.1	499.2	0.60	-0.22	-32.37	

Company:	Synergy Resources	Local Co-ordinate Reference:	Well SRC Aims 43-10D
Project:	SEC.10-T5N-R66W	TVD Reference:	WELL @ 4871.0ft (Original Well Elev)
Site:	SRC Aims/GCC Pad Sec.10-T5N-R66W	MD Reference:	WELL @ 4871.0ft (Original Well Elev)
Well:	SRC Aims 43-10D	North Reference:	True
Wellbore:	Wellbore #1	Survey Calculation Method:	Minimum Curvature
Design:	Wellbore #1	Database:	Landmark

Survey									
Measured Depth (ft)	Inclination (°)	Azimuth (°)	Vertical Depth (ft)	+N/-S (ft)	+E/-W (ft)	Vertical Section (ft)	Dogleg Rate (°/100ft)	Build Rate (°/100ft)	Turn Rate (°/100ft)
6,036.0	1.00	325.80	5,996.2	-482.1	124.6	497.7	0.46	0.11	-27.45
6,130.0	1.00	307.00	6,090.2	-480.9	123.5	496.3	0.35	0.00	-20.00
6,223.0	0.50	273.40	6,183.2	-480.4	122.4	495.5	0.69	-0.54	-36.13
6,317.0	0.90	291.50	6,277.2	-480.1	121.3	494.9	0.48	0.43	19.26
6,411.0	1.20	288.20	6,371.2	-479.5	119.7	493.9	0.33	0.32	-3.51
6,505.0	1.00	281.90	6,465.2	-479.0	117.9	493.0	0.25	-0.21	-6.70
6,598.0	0.80	263.40	6,558.1	-478.9	116.5	492.5	0.38	-0.22	-19.89
6,692.0	1.20	276.90	6,652.1	-478.9	114.9	492.0	0.49	0.43	14.36
6,739.4	1.02	266.23	6,699.6	-478.9	114.0	491.7	0.57	-0.37	-22.50
TARGET CIRCLE 1976'FSL & 660'FEL - LEGAL BOX 400' X 400' 1976'FSL, 660'FEL									
6,786.0	0.90	252.20	6,746.1	-479.0	113.2	491.7	0.57	-0.27	-30.13
6,880.0	1.00	206.80	6,840.1	-480.0	112.1	492.3	0.79	0.11	-48.30
6,973.0	0.40	249.70	6,933.1	-480.8	111.5	492.9	0.81	-0.65	46.13
7,067.0	0.90	278.20	7,027.1	-480.8	110.4	492.6	0.62	0.53	30.32
7,161.0	1.70	289.40	7,121.1	-480.2	108.4	491.5	0.89	0.85	11.91
7,255.0	2.20	268.50	7,215.0	-479.8	105.2	490.3	0.92	0.53	-22.23
7,348.0	1.70	249.00	7,308.0	-480.4	102.2	489.9	0.89	-0.54	-20.97
7,442.0	1.20	225.60	7,401.9	-481.5	100.2	490.5	0.81	-0.53	-24.89
7,536.0	1.00	214.20	7,495.9	-482.9	99.0	491.5	0.31	-0.21	-12.13
7,628.0	0.70	192.20	7,587.9	-484.1	98.4	492.5	0.48	-0.33	-23.91
7,678.0	0.70	192.20	7,637.9	-484.7	98.3	493.1	0.00	0.00	0.00

Checked By: _____	Approved By: _____	Date: _____
-------------------	--------------------	-------------