

# NOBLE ENERGY INC.

SPIKE STATE D16-12  
NWSW 16-3N-64W  
2130' FSL & 511' FWL  
Weld County, Colorado  
Wattenberg

## CURRENT WELLBORE SCHEMATIC with PROPOSED P&A 8/13/2012

API: 15-123-15914  
COGCC #

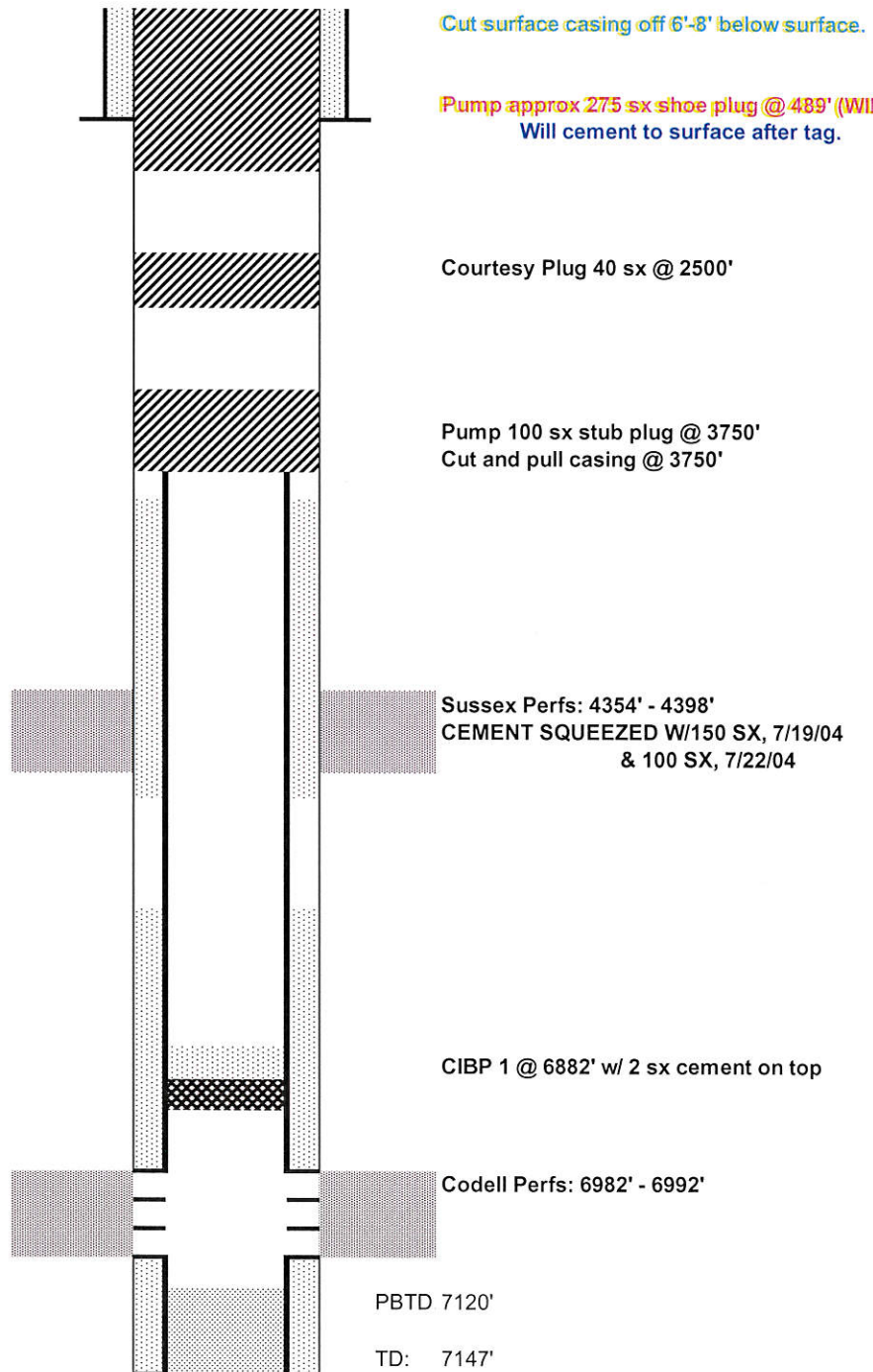
GL Elev: 4770'  
KB Elev: 4782'

Spud Date: 7/14/1992

Surface Casing :  
8 5/8" 24# @389'  
Cement: 265 sx  
TOC: Surface

TOC @ 3862'

Production Casing :  
3 1/2" 9.30# @ 7122'  
Cement: 450 sx  
3862' - 4206'  
Gel Spacer  
6100' - 7122'  
TD: 7/18/1992



Cut surface casing off 6'-8' below surface.

Pump approx 275 sx shoe plug @ 489' (WILL TAG)  
Will cement to surface after tag.

Courtesy Plug 40 sx @ 2500'

Pump 100 sx stub plug @ 3750'  
Cut and pull casing @ 3750'

Sussex Perfs: 4354' - 4398'  
CEMENT SQUEEZED W/150 SX, 7/19/04  
& 100 SX, 7/22/04

CIBP 1 @ 6882' w/ 2 sx cement on top

Codell Perfs: 6982' - 6992'

PBTD 7120'

TD: 7147'