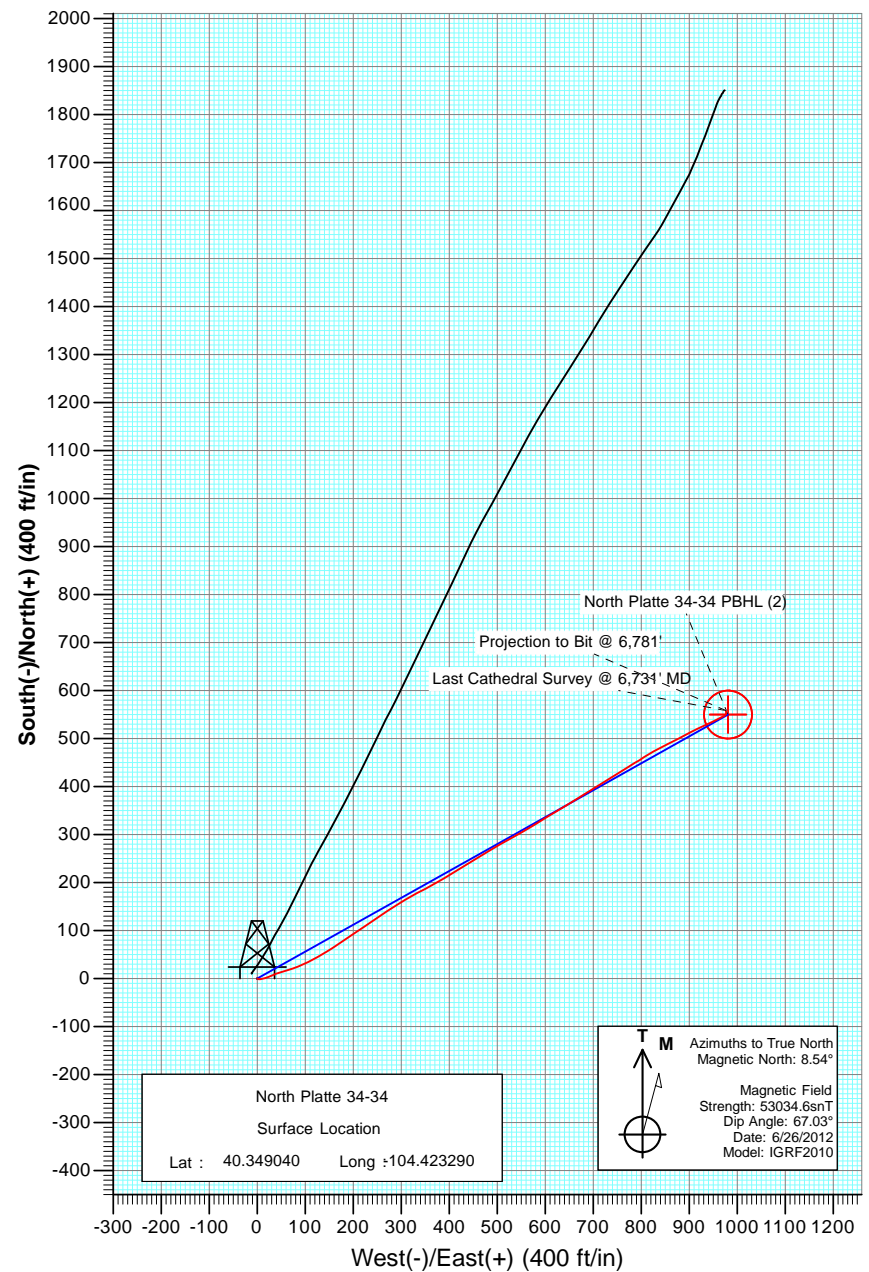
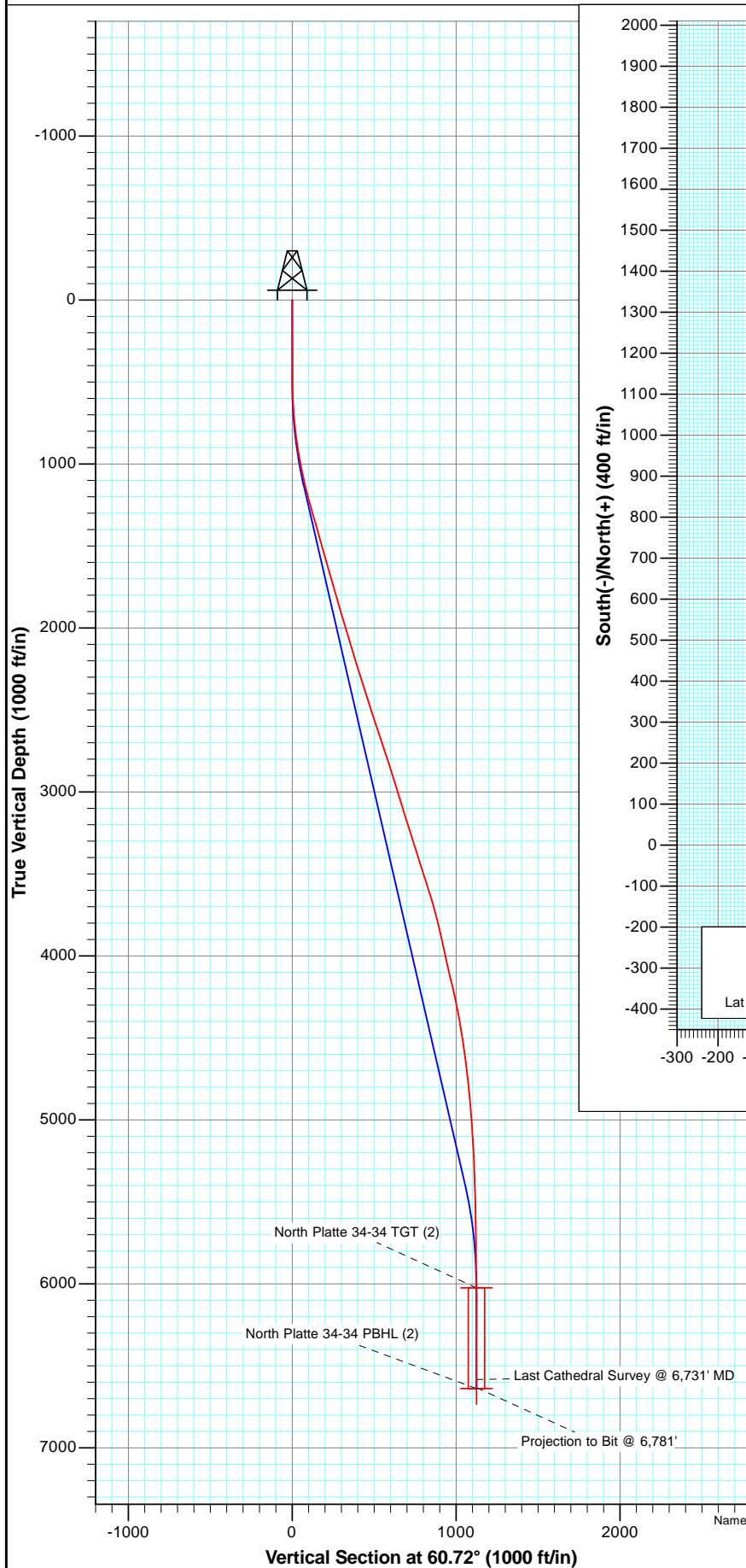




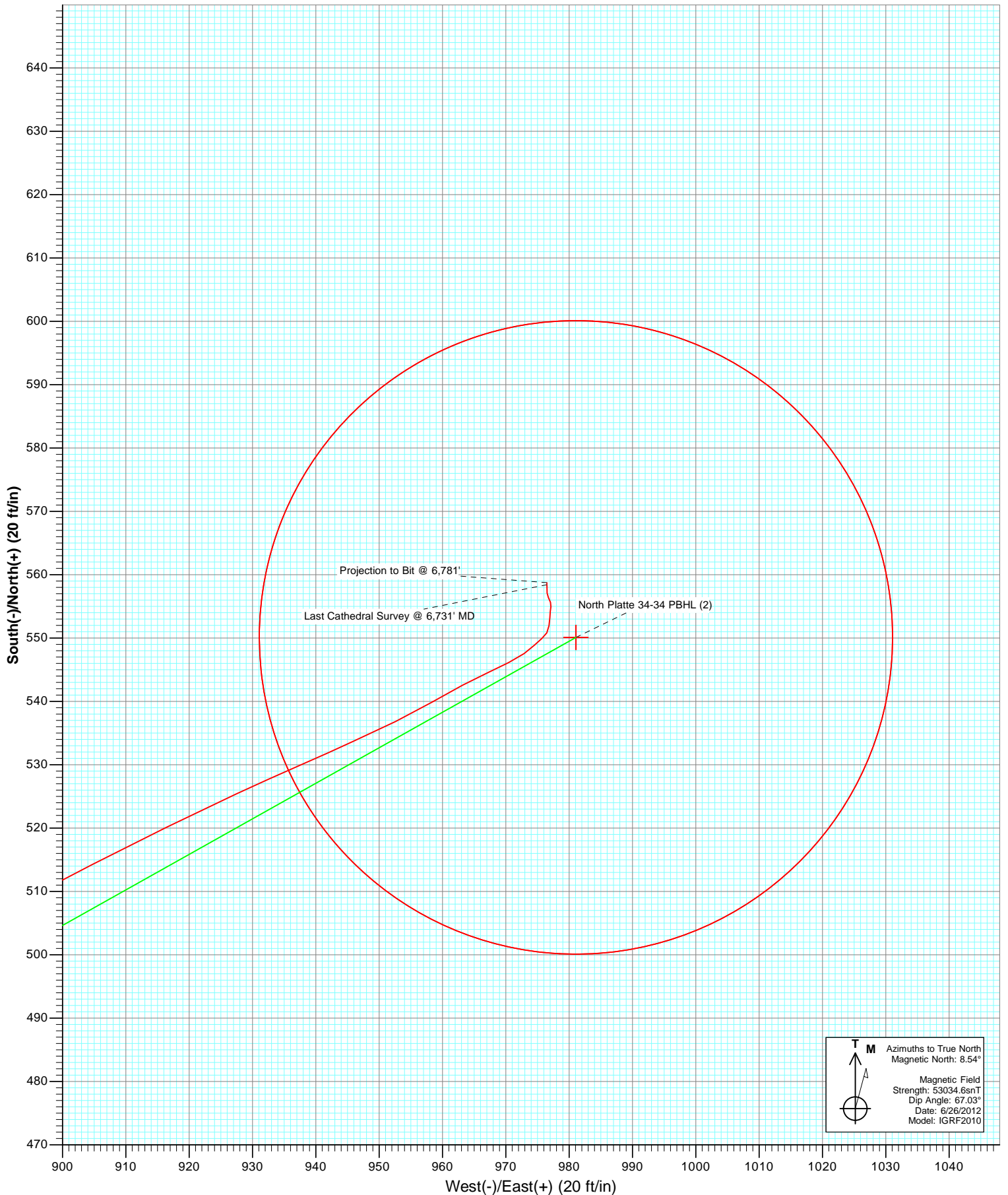
Project: Weld County
Site: North Platte 24-34 Pad (was N-34)
Well: North Platte 34-34
Wellbore: DD
Plan: FINAL



DD North Platte 34-34 125428/178455; SC							
KBE @ 4539.0ft (Original Well Elev) North American Datum 1983 Well North Platte 34-34, True North							
Type	Target	North Platte 34-34 PBHL (2)	Azimuth	Origin	Type	N/S	E/W From TVD
Target			Slot			0.0	0.0
	TVD		+N/-S		+E/-W	Latitude	Longitude
North Platte 34-34 TGT (2)	6024.0	550.1	981.1			40.350550	-104.419770
North Platte 34-34 PBHL (2)	6038.0	550.1	981.1			40.350550	-104.419770



Project: Weld County
Site: North Platte 24-34 Pad (was N-34)
Well: North Platte 34-34
Wellbore: DD
Plan: FINAL



Cathedral Energy Services

Survey Report

Company:	Bonanza Creek Energy Operating Company, LLC	Local Co-ordinate Reference:	Well North Platte 34-34
Project:	Weld County	TVD Reference:	KBE @ 4539.0ft (Original Well Elev)
Site:	North Platte 24-34 Pad (was N-34)	MD Reference:	KBE @ 4539.0ft (Original Well Elev)
Well:	North Platte 34-34	North Reference:	True
Wellbore:	DD	Survey Calculation Method:	Minimum Curvature
Design:	DD	Database:	USA EDM 5000 Multi Users DB

Project	Weld County		
Map System:	US State Plane 1983	System Datum:	Mean Sea Level
Geo Datum:	North American Datum 1983		
Map Zone:	Colorado Northern Zone		

Site		North Platte 24-34 Pad (was N-34)			
Site Position:		Northing:	1,371,838.51 ft	Latitude:	40.349090
From:	Lat/Long	Easting:	3,300,077.01 ft	Longitude:	-104.423370
Position Uncertainty:	0.0 ft	Slot Radius:	13.200 in	Grid Convergence:	0.70 °

Well	North Platte 34-34					
Well Position	+N/-S	0.0 ft	Northing:	1,371,820.57 ft	Latitude:	40.349040
	+E/-W	0.0 ft	Easting:	3,300,099.53 ft	Longitude:	-104.423290
Position Uncertainty		0.0 ft	Wellhead Elevation:	ft	Ground Level:	4,529.0 ft

Wellbore	DD				
Magnetics	Model Name	Sample Date	Declination (°)	Dip Angle (°)	Field Strength (nT)
	IGRF2010	6/26/2012	8.54	67.03	53,035

Design	DD				
Audit Notes:					
Version:	1.0	Phase:	ACTUAL	Tie On Depth:	0.0
Vertical Section:	Depth From (TVD)	+N/-S (ft)	+E/-W (ft)	Direction (°)	
	0.0	0.0	0.0	60.72	

Survey Program	Date	7/4/2012			
From (ft)	To (ft)	Survey (Wellbore)	Tool Name	Description	
525.0	6,781.0	Survey #1 (DD)	MWD	Geolink MWD	

Survey										
Measured Depth (ft)	Inclination (°)	Azimuth (°)	Vertical Depth (ft)	+N/-S (ft)	+E/-W (ft)	Vertical Section (ft)	Dogleg Rate (°/100ft)	Build Rate (°/100ft)	Formations / Comments	
0.0	0.00	0.00	0.0	0.0	0.0	0.0	0.00	0.00		
525.0	0.80	108.10	525.0	-1.1	3.5	2.5	0.15	0.15		
619.0	2.90	84.00	618.9	-1.1	6.5	5.1	2.33	2.23		
713.0	4.90	74.00	712.7	0.3	12.7	11.2	2.24	2.13		
807.0	6.60	71.80	806.2	3.1	21.7	20.4	1.82	1.81		
902.0	9.00	66.60	900.3	7.7	33.7	33.2	2.63	2.53		
996.0	10.90	73.00	992.9	13.2	48.9	49.2	2.34	2.02		
1,090.0	13.00	72.40	1,084.9	19.0	67.5	68.2	2.24	2.23		
1,185.0	14.80	68.00	1,177.1	26.8	89.0	90.7	2.20	1.89		
1,278.0	16.50	61.50	1,266.7	37.6	111.6	115.7	2.62	1.83		
1,372.0	15.20	60.70	1,357.1	50.0	134.1	141.4	1.40	-1.38		
1,465.0	16.30	56.70	1,446.6	63.1	155.6	166.6	1.66	1.18		
1,560.0	15.00	55.60	1,538.1	77.4	176.9	192.1	1.40	-1.37		

Cathedral Energy Services

Survey Report

Company:	Bonanza Creek Energy Operating Company, LLC	Local Co-ordinate Reference:	Well North Platte 34-34
Project:	Weld County	TVD Reference:	KBE @ 4539.0ft (Original Well Elev)
Site:	North Platte 24-34 Pad (was N-34)	MVD Reference:	KBE @ 4539.0ft (Original Well Elev)
Well:	North Platte 34-34	North Reference:	True
Wellbore:	DD	Survey Calculation Method:	Minimum Curvature
Design:	DD	Database:	USA EDM 5000 Multi Users DB

Survey									
Measured Depth (ft)	Inclination (°)	Azimuth (°)	Vertical Depth (ft)	+N/-S (ft)	+E/-W (ft)	Vertical Section (ft)	Dogleg Rate (°/100ft)	Build Rate (°/100ft)	Formations / Comments
1,655.0	16.70	57.50	1,629.5	91.6	198.6	218.0	1.87	1.79	
1,749.0	15.10	55.10	1,719.9	105.9	220.0	243.7	1.84	-1.70	
1,843.0	16.70	54.70	1,810.3	120.7	241.1	269.3	1.71	1.70	
1,938.0	17.30	58.30	1,901.1	136.0	264.2	297.0	1.28	0.63	
2,030.0	16.00	55.20	1,989.3	150.4	286.3	323.3	1.71	-1.41	
2,123.0	16.30	60.70	2,078.6	164.1	308.2	349.1	1.68	0.32	
2,218.0	17.40	60.80	2,169.5	177.6	332.2	376.6	1.16	1.16	
2,311.0	17.40	63.00	2,258.3	190.7	356.7	404.4	0.71	0.00	
2,405.0	18.10	59.80	2,347.8	204.4	381.9	433.1	1.28	0.74	
2,499.0	16.70	58.10	2,437.5	218.9	406.0	461.2	1.58	-1.49	
2,593.0	19.10	58.70	2,526.9	234.0	430.6	490.0	2.56	2.55	
2,687.0	18.50	58.50	2,615.9	249.8	456.4	520.3	0.64	-0.64	
2,781.0	17.40	58.10	2,705.3	265.0	481.1	549.2	1.18	-1.17	
2,874.0	19.00	61.20	2,793.7	279.7	506.1	578.3	2.01	1.72	
2,968.0	17.30	60.80	2,883.0	293.9	531.8	607.5	1.81	-1.81	
3,060.0	17.00	60.00	2,970.9	307.3	555.3	634.7	0.41	-0.33	
3,153.0	17.40	58.20	3,059.7	321.4	578.9	662.2	0.72	0.43	
3,246.0	17.90	59.40	3,148.4	336.0	603.1	690.3	0.66	0.54	
3,339.0	16.10	58.50	3,237.3	350.0	626.4	717.5	1.96	-1.94	
3,434.0	18.00	58.80	3,328.1	364.5	650.1	745.4	2.00	2.00	
3,528.0	18.10	57.70	3,417.5	379.8	674.9	774.4	0.38	0.11	
3,621.0	18.30	58.20	3,505.8	395.2	699.5	803.5	0.27	0.22	
3,716.0	17.40	58.20	3,596.3	410.6	724.3	832.6	0.95	-0.95	
3,810.0	15.80	58.10	3,686.3	424.8	747.1	859.4	1.70	-1.70	
3,905.0	14.60	58.20	3,778.0	437.9	768.2	884.3	1.26	-1.26	
3,999.0	13.00	58.60	3,869.3	449.7	787.3	906.7	1.71	-1.70	
4,093.0	11.40	57.40	3,961.2	460.2	804.2	926.5	1.72	-1.70	
4,187.0	12.80	58.50	4,053.1	470.6	820.9	946.2	1.51	1.49	
4,282.0	13.90	63.60	4,145.5	481.2	840.1	968.1	1.70	1.16	
4,376.0	12.40	63.60	4,237.1	490.7	859.2	989.5	1.60	-1.60	
4,470.0	10.90	62.30	4,329.1	499.3	876.2	1,008.4	1.62	-1.60	
4,564.0	10.00	62.20	4,421.6	507.3	891.2	1,025.5	0.96	-0.96	
4,659.0	8.40	62.90	4,515.3	514.3	904.7	1,040.6	1.69	-1.68	
4,753.0	7.60	63.80	4,608.4	520.1	916.4	1,053.7	0.86	-0.85	
4,848.0	7.20	65.10	4,702.6	525.4	927.4	1,065.9	0.46	-0.42	
4,942.0	6.20	66.50	4,796.0	529.9	937.4	1,076.8	1.08	-1.06	
5,036.0	5.00	65.20	4,889.5	533.7	945.8	1,086.0	1.28	-1.28	
5,130.0	4.10	64.40	4,983.2	536.8	952.6	1,093.4	0.96	-0.96	
5,224.0	3.80	59.50	5,077.0	539.9	958.3	1,099.9	0.48	-0.32	
5,318.0	3.00	62.90	5,170.8	542.6	963.2	1,105.5	0.88	-0.85	
5,413.0	2.50	64.60	5,265.7	544.6	967.2	1,110.0	0.53	-0.53	
5,506.0	1.90	62.90	5,358.7	546.2	970.4	1,113.6	0.65	-0.65	
5,601.0	1.50	56.30	5,453.6	547.6	972.9	1,116.4	0.47	-0.42	
5,694.0	1.10	44.30	5,546.6	548.9	974.5	1,118.5	0.52	-0.43	
5,788.0	0.80	51.50	5,640.6	549.9	975.7	1,120.0	0.34	-0.32	
5,882.0	0.70	30.30	5,734.6	550.8	976.5	1,121.1	0.31	-0.11	
5,977.0	0.80	5.60	5,829.6	552.0	976.8	1,122.0	0.35	0.11	
6,071.0	0.70	6.20	5,923.6	553.2	976.9	1,122.7	0.11	-0.11	
6,165.0	0.50	3.90	6,017.6	554.2	977.0	1,123.3	0.21	-0.21	
6,260.0	0.40	11.10	6,112.6	554.9	977.1	1,123.7	0.12	-0.11	
6,354.0	0.50	338.40	6,206.6	555.6	977.0	1,124.0	0.29	0.11	
6,449.0	0.50	337.70	6,301.6	556.4	976.7	1,124.1	0.01	0.00	
6,542.0	0.40	352.50	6,394.5	557.1	976.5	1,124.2	0.16	-0.11	

Cathedral Energy Services

Survey Report

Company:	Bonanza Creek Energy Operating Company, LLC	Local Co-ordinate Reference:	Well North Platte 34-34
Project:	Weld County	TVD Reference:	KBE @ 4539.0ft (Original Well Elev)
Site:	North Platte 24-34 Pad (was N-34)	MD Reference:	KBE @ 4539.0ft (Original Well Elev)
Well:	North Platte 34-34	North Reference:	True
Wellbore:	DD	Survey Calculation Method:	Minimum Curvature
Design:	DD	Database:	USA EDM 5000 Multi Users DB

Survey									
Measured Depth (ft)	Inclination (°)	Azimuth (°)	Vertical Depth (ft)	+N/-S (ft)	+E/-W (ft)	Vertical Section (ft)	Dogleg Rate (°/100ft)	Build Rate (°/100ft)	Formations / Comments
6,637.0	0.40	2.40	6,489.5	557.8	976.5	1,124.5	0.07	0.00	
6,731.0	0.40	356.20	6,583.5	558.4	976.5	1,124.9	0.05	0.00	Last Cathedral Survey @ 6,731' MD
6,781.0	0.40	356.20	6,633.5	558.8	976.5	1,125.0	0.00	0.00	Projection to Bit @ 6,781'

Targets									
Target Name	Dip Angle (°)	Dip Dir. (°)	TVD (ft)	+N/-S (ft)	+E/-W (ft)	Northing (ft)	Easting (ft)	Latitude	Longitude
- hit/miss target									
- Shape									
North Platte 34-34 TGT	0.00	0.00	6,024.0	550.1	981.1	1,372,382.56	3,301,073.85	40.350550	-104.419770
- actual wellpath misses target center by 5.8ft at 6171.4ft MD (6024.0 TVD, 554.3 N, 977.0 E)									
- Point									
North Platte 34-34 PBHL	0.00	0.00	6,638.0	550.1	981.1	1,372,382.56	3,301,073.85	40.350550	-104.419770
- actual wellpath misses target center by 10.8ft at 6781.0ft MD (6633.5 TVD, 558.8 N, 976.5 E)									
- Circle (radius 50.0)									

Design Annotations					
Measured Depth (ft)	Vertical Depth (ft)	Local Coordinates			
		+N/-S (ft)	+E/-W (ft)	Comment	
6,731.0	6,583.5	558.4	976.5	Last Cathedral Survey @ 6,731' MD	
6,781.0	6,633.5	558.8	976.5	Projection to Bit @ 6,781'	

Checked By: _____ Approved By: _____ Date: _____