



+N/-S
0.00

+E/-W
0.00

Northing
1590921.60
KELLY BUSHING @ 5158.00usft (H&P 271 (24' RKB) kjs)

Well Name: GM 514-14

Surface Location: GV 18-23 Pad

North American Datum 1983 , US State Plane 1983 . Colorado Central Zone

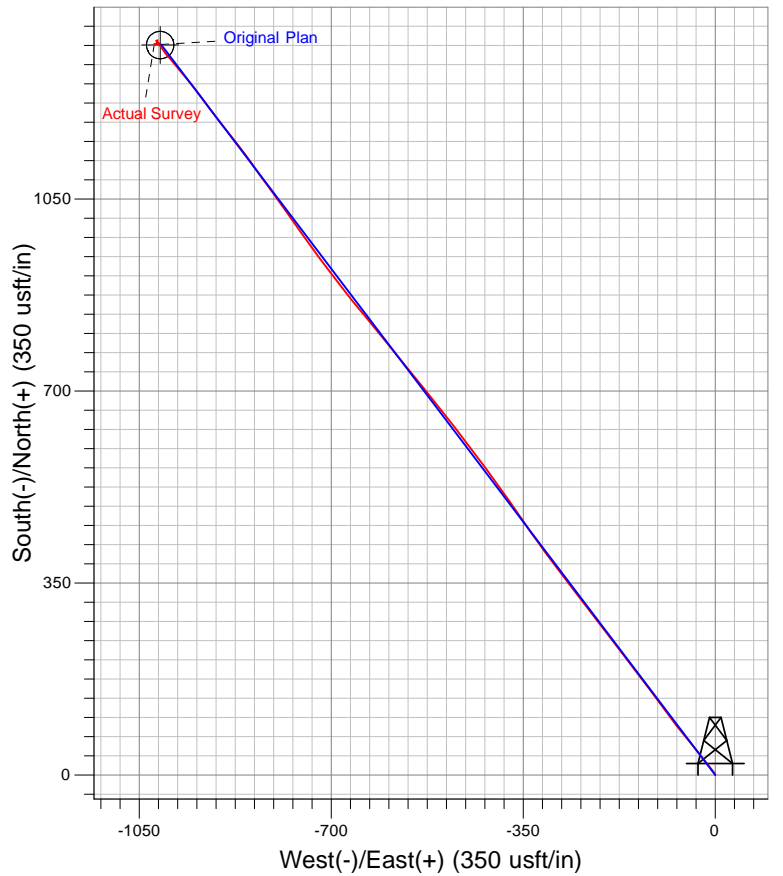
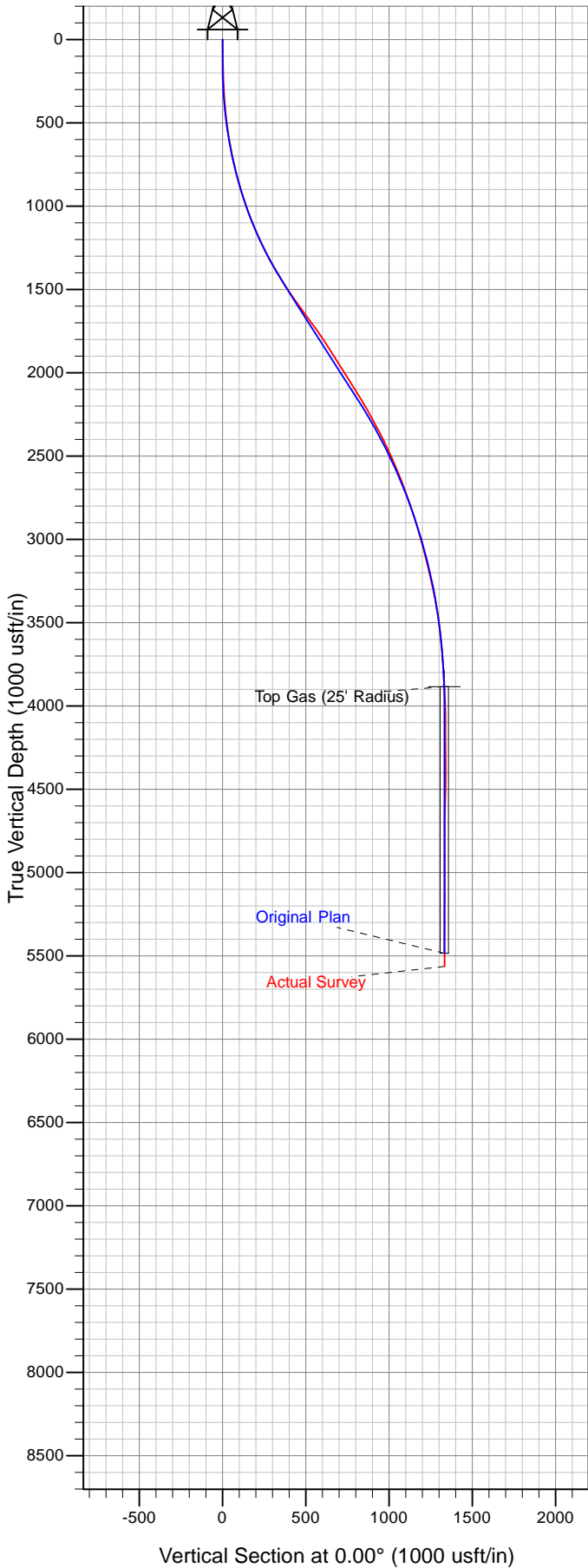
Ground Elevation: 5134.00

Easting
2270838.90

Latitude
39.42740

Longitude
-108.08167

Slot
B 1



Azimuths to True North
 Magnetic North: 10.31°
 Magnetic Field
 Strength: 52153.4snT
 Dip Angle: 65.65°
 Date: 12/30/2011
 Model: IGRF2010