
WILLIAMS PRODUCTION RMT INC - EBUS

**GM 514-14
GRAND VALLEY
Garfield County , Colorado**

Cement Surface Casing
08-Jan-2012

Post Job Report

The Road to Excellence Starts with Safety

Sold To #: 300721	Ship To #: 2896834	Quote #:	Sales Order #: 9134505
Customer: WILLIAMS PRODUCTION RMT INC - EBUS		Customer Rep: Schultz, Mike	
Well Name: GM		Well #: 514-14	API/UWI #: 05-045-20836
Field: GRAND VALLEY	City (SAP): PARACHUTE	County/Parish: Garfield	State: Colorado
Lat: N 39.427 deg. OR N 39 deg. 25 min. 37.56 secs.		Long: W 108.082 deg. OR W -109 deg. 55 min. 5.981 secs.	
Contractor: H&P 271		Rig/Platform Name/Num: H&P 271	
Job Purpose: Cement Surface Casing			
Well Type: Development Well		Job Type: Cement Surface Casing	
Sales Person: SCOTT, KYLE		Srvc Supervisor: JAMISON, PRICE	MBU ID Emp #: 229155

Job Personnel

HES Emp Name	Exp Hrs	Emp #	HES Emp Name	Exp Hrs	Emp #	HES Emp Name	Exp Hrs	Emp #
HYDE, DUSTIN C	5.5	453940	JAMISON, PRICE W	5.5	229155	JENSEN, SHANE Lynn	5.5	441759
VANALSTYNE, TROY L	5.5	420256						

Equipment

HES Unit #	Distance-1 way	HES Unit #	Distance-1 way	HES Unit #	Distance-1 way	HES Unit #	Distance-1 way
10867304	60 mile	10867425	60 mile	10897891	60 mile	10998054	60 mile
11560046	60 mile	11562538	60 mile	11583934	60 mile		

Job Hours

Date	On Location Hours	Operating Hours	Date	On Location Hours	Operating Hours	Date	On Location Hours	Operating Hours
1/8/12	5.5	3						

TOTAL Total is the sum of each column separately

Job

Job Times

Formation Name	Formation Depth (MD)	Top	Bottom	Called Out	Date	Time	Time Zone
					08 - Jan - 2012	05:30	MST
Form Type			BHST	On Location	08 - Jan - 2012	09:00	MST
Job depth MD	1746. ft		Job Depth TVD	1746. ft	08 - Jan - 2012	12:38	MST
Water Depth			Wk Ht Above Floor	4. ft	08 - Jan - 2012	13:40	MST
Perforation Depth (MD)	From		To		Departed Loc	08 - Jan - 2012	14:30

Well Data

Description	New / Used	Max pressure psig	Size in	ID in	Weight lbm/ft	Thread	Grade	Top MD ft	Bottom MD ft	Top TVD ft	Bottom TVD ft
OPEN HOLE				13.5				.	1761.	.	1761.
SURFACE CASING	Unknown		9.625	9.001	32.3		H-40	.	1746.	.	1746.

Sales/Rental/3rd Party (HES)

Description	Qty	Qty uom	Depth	Supplier
PLUG,CMTG, TOP, 9 5/8, HWE, 8.16 MIN/9.06 MA	1	EA		

Tools and Accessories

Type	Size	Qty	Make	Depth	Type	Size	Qty	Make	Depth	Type	Size	Qty	Make
Guide Shoe					Packer					Top Plug			
Float Shoe					Bridge Plug					Bottom Plug			
Float Collar					Retainer					SSR plug set			
Insert Float										Plug Container			
Stage Tool										Centralizers			

Miscellaneous Materials

Gelling Agt	Conc	Surfactant	Conc	Acid Type	Qty	Conc %
Treatment Fld	Conc	Inhibitor	Conc	Sand Type	Size	Qty

Fluid Data

Stage/Plug #: 1

Fluid #	Stage Type	Fluid Name	Qty	Qty uom	Mixing Density lbm/gal	Yield ft ³ /sk	Mix Fluid Gal/sk	Rate bbl/min	Total Mix Fluid Gal/sk
1	Fresh Water		20.00	bbl	8.4	.0	.0	6.0	
2	Lead Cement	VERSACEM (TM) SYSTEM (452010)	250.0	sacks	12.3	2.38	13.75	8.0	13.75
	13.75 Gal	FRESH WATER							
3	Tail Cement	PLUGCEM (TM) SYSTEM (452969)	280.0	sacks	15.	1.33	5.49	8.0	5.49
	5.49 Gal	FRESH WATER							
4	Displacement Fluid		133.6	bbl	8.4	.0	.0	10.0	
Calculated Values		Pressures		Volumes					
Displacement	133.6	Shut In: Instant		Lost Returns	NO	Cement Slurry	172.3	Pad	
Top Of Cement	SURFACE	5 Min		Cement Returns	23	Actual Displacement	133.6	Treatment	
Frac Gradient		15 Min		Spacers	20	Load and Breakdown		Total Job	326
Rates									
Circulating	RIG	Mixing	8	Displacement	10	Avg. Job	8		
Cement Left In Pipe	Amount	48 ft	Reason	Shoe Joint					
Frac Ring # 1 @	ID	Frac ring # 2 @	ID	Frac Ring # 3 @	ID	Frac Ring # 4 @	ID		
The Information Stated Herein Is Correct				Customer Representative Signature					

The Road to Excellence Starts with Safety

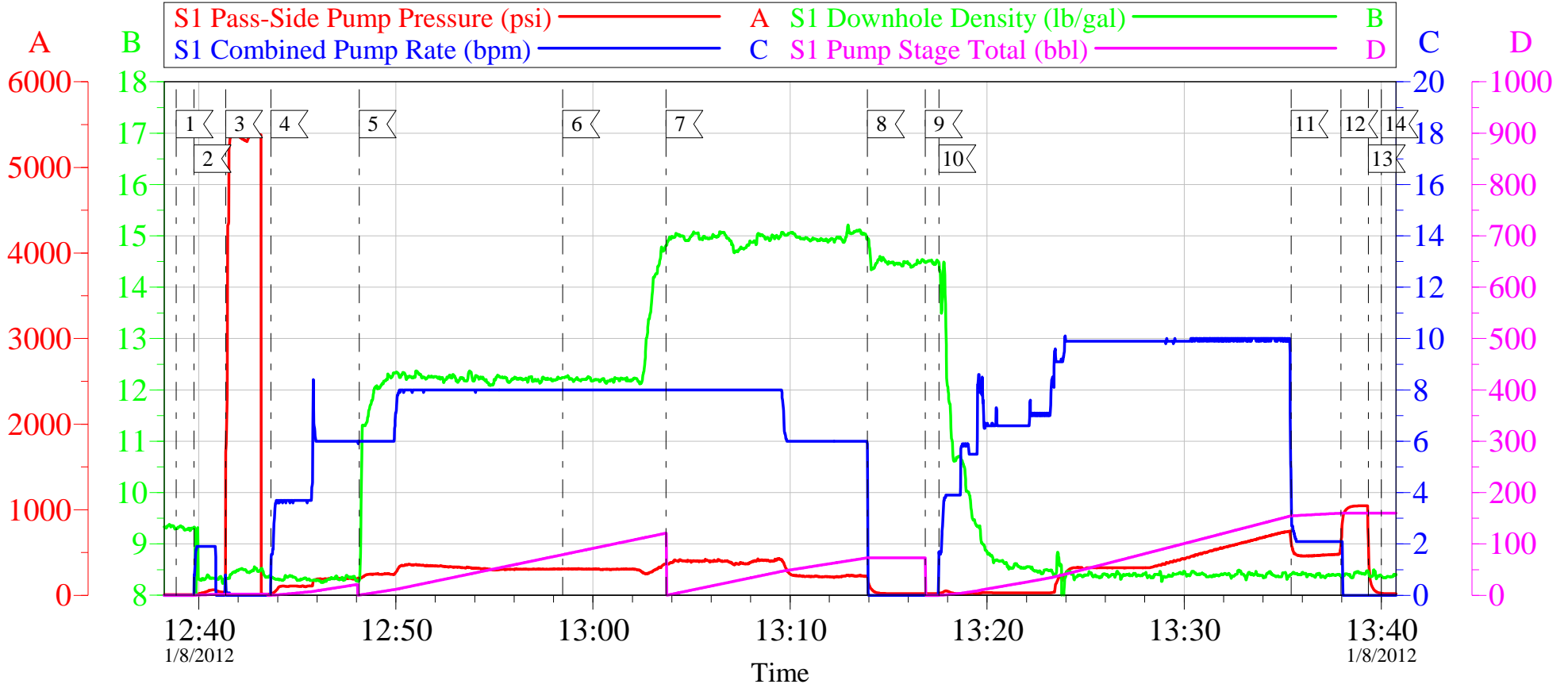
Sold To #: 300721	Ship To #: 2896834	Quote #:	Sales Order #: 9134505
Customer: WILLIAMS PRODUCTION RMT INC - EBUS		Customer Rep: Schultz, Mike	
Well Name: GM		Well #: 514-14	API/UWI #: 05-045-20836
Field: GRAND VALLEY	City (SAP): PARACHUTE	County/Parish: Garfield	State: Colorado
Legal Description:			
Lat: N 39.427 deg. OR N 39 deg. 25 min. 37.56 secs.		Long: W 108.082 deg. OR W -109 deg. 55 min. 5.981 secs.	
Contractor: H&P 271		Rig/Platform Name/Num: H&P 271	
Job Purpose: Cement Surface Casing			Ticket Amount:
Well Type: Development Well		Job Type: Cement Surface Casing	
Sales Person: SCOTT, KYLE		Srvc Supervisor: JAMISON, PRICE	MBU ID Emp #: 229155

Activity Description	Date/Time	Cht #	Rate bbl/min	Volume bbl		Pressure psig		Comments
				Stage	Total	Tubing	Casing	
Call Out	01/08/2012 05:30							TD 1761 HOLE SIZE 13.5 TP 1746 CASING 9.625 32.3 # H-40 SHOE JOINT 48 MUD 10.2 PPG
Depart Yard Safety Meeting	01/08/2012 07:45							
Crew Leave Yard	01/08/2012 08:00							
Arrive At Loc	01/08/2012 09:00							
Assessment Of Location Safety Meeting	01/08/2012 09:20							
Pre-Rig Up Safety Meeting	01/08/2012 10:00							
Pre-Job Safety Meeting	01/08/2012 12:20							
Start Job	01/08/2012 12:38							
Prime Pumps	01/08/2012 12:39		6	20			63.0	FRESH WATER
Test Lines	01/08/2012 12:41						5000. 0	
Pump Spacer 1	01/08/2012 12:43						200.0	FRESH WATER
Pump Lead Cement	01/08/2012 12:48		8	106			363.0	MIXED @ 12.3 PPG YIELD 2.38 WAT/REQ 13.75 250 SKS
Pump Tail Cement	01/08/2012 13:03		8	66.3			427.0	MIXED @ 15 PPG YIELD 1.33 WAT/REQ 5.49 280 SKS
Shutdown	01/08/2012 13:13							
Drop Plug	01/08/2012 13:16							

Activity Description	Date/Time	Cht #	Rate bbl/min	Volume bbl		Pressure psig		Comments
				Stage	Total	Tubing	Casing	
Pump Displacement	01/08/2012 13:17		10					FRESH WATER
Slow Rate	01/08/2012 13:35		2	123			750.0	
Bump Plug	01/08/2012 13:37		2	133.6			300.0	PRESSURE UP TO 1046 PSI
Check Floats	01/08/2012 13:39							FLOATS HELD
End Job	01/08/2012 13:40							CEMENT BACK TO SURFACE 203 BBLS
Post-Job Safety Meeting (Pre Rig-Down)	01/08/2012 13:41							GOOD CIRCULATION THROUGHOUT JOB
Depart Location Safety Meeting	01/08/2012 14:20							CASING WAS BEING MOVED THROUGHOUT JOB
Crew Leave Location	01/08/2012 14:30							THANKS FOR USING HALLIBURTON BILL JAMISON & CREW

WILLIAMS GM 514-14

9.625 SURFACE CASING

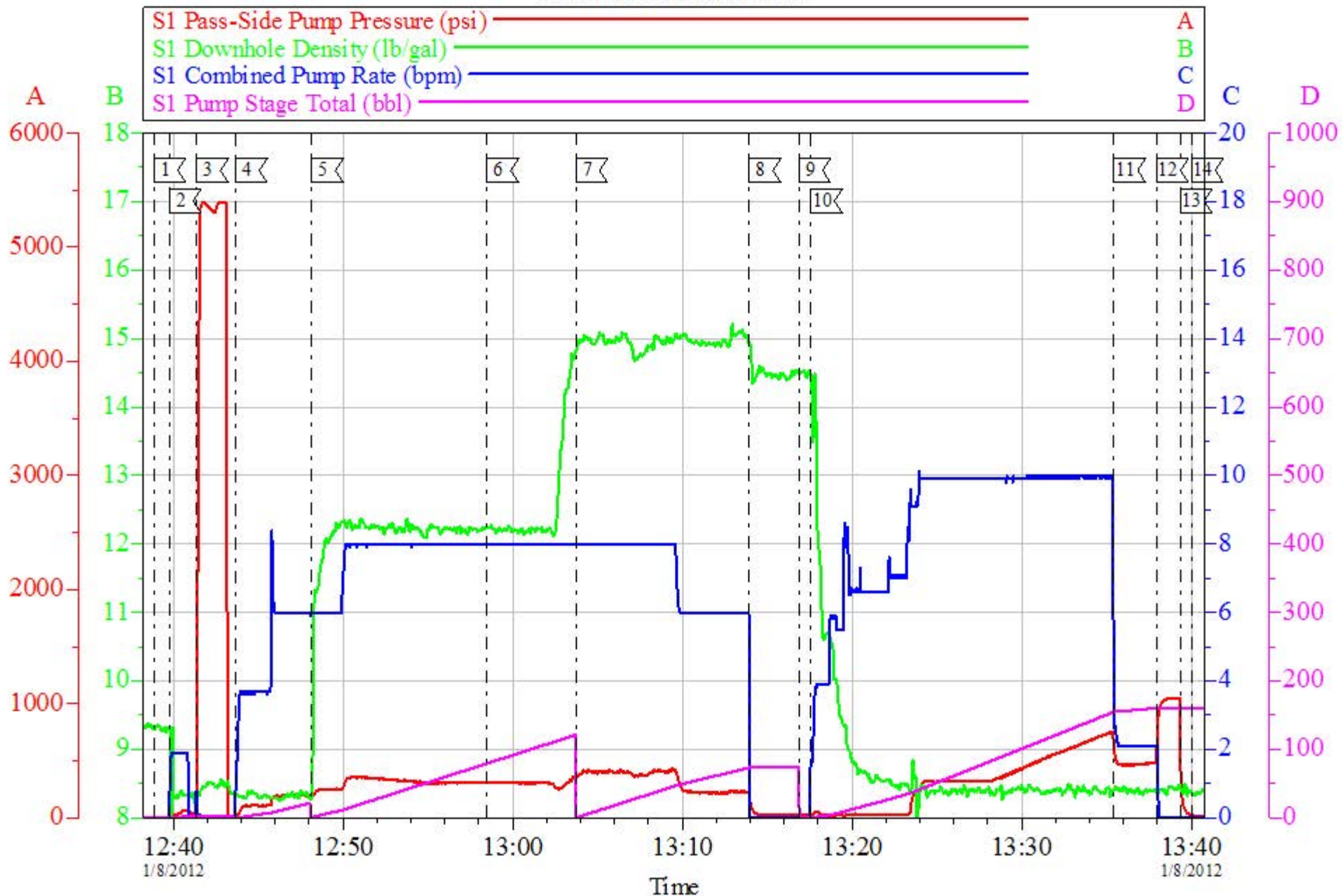


Local Event Log			
1	START JOB	12:38:51	2 PRIME LINES 12:39:45
3	TEST LINES	12:41:22	4 START FRESH WATER SPACER 12:43:39
5	START LEAD CEMENT	12:48:08	6 START TAIL CEMENT 12:58:28
7	START TAIL CEMENT	13:03:42	8 SHUT DOWN 13:13:56
9	DROP PLUG	13:16:52	10 START DISPLACEMENT 13:17:33
11	SLOW RATE	13:35:26	12 BUMP PLUG 13:37:57
13	CHECK FLOATS	13:39:20	14 END JOB 13:40:00

Customer: WILLIAMS	Job Date: 08-Jan-2012	Sales Order #: 9134505
Well Description: GM 514-14	Job Type: CEMENT	ADC Used: YES
Company Rep: MIKE SCHULTZ	Cement Supervisor: BILL JAMISON	Elite # 5 SHANE JENSEN

WILLIAMS GM 514-14

9.625 SURFACE CASING



Customer: WILLIAMS
 Well Description: GM 514-14
 Company Rep: MIKE SCHULTZ

Job Date: 08-Jan-2012
 Job Type: CEMENT
 Cement Supervisor: BILL JAMISON

Sales Order #: 9134505
 ADC Used: YES
 Elite # 5 SHANE JENSEN

OptiCem v6.4.10
 08-Jan-12 14:02

HALLIBURTON

Water Analysis Report

Company: WILLIAMS

Date: 1/8/2012

Submitted by: BILL JAMISON

Date Rec.: 1/8/2012

Attention: J.Trout

S.O.# 9134505

Lease GM

Job Type: SURFACE

Well # 514-14

Specific Gravity	<i>MAX</i>	1
pH	<i>8</i>	6.5
Potassium (K)	<i>5000</i>	250 Mg / L
Calcium (Ca)	<i>500</i>	120 Mg / L
Iron (FE2)	<i>300</i>	0 Mg / L
Chlorides (Cl)	<i>3000</i>	0 Mg / L
Sulfates (SO ₄)	<i>1500</i>	200 Mg / L
Chlorine (Cl ₂)		0 Mg / L
Temp	<i>40-80</i>	33 Deg
Total Dissolved Solids		370 Mg / L

Respectfully: BILL JAMISON

Title: CEMENTING SUPERVISOR

Location: Grand Junction, CO

NOTICE:

This report is limited to the described sample tested. Any person using or relying on this report agrees that Halliburton shall not be liable for any loss or damage whether due to act or omission resulting from such report or

Sales Order #: 9134505	Line Item: 10	Survey Conducted Date: 1/8/2012
Customer: WILLIAMS PRODUCTION RMT INC - EBUS		Job Type (BOM): CMT SURFACE CASING BOM
Customer Representative: MIKE SCHULTZ		API / UWI: (leave blank if unknown) 05-045-20836
Well Name: GM		Well Number: 514-14
Well Type: Development Well	Well Country: United States of America	
H2S Present:	Well State: Colorado	Well County: Garfield

Dear Customer,

We hope that you were satisfied with the service quality of this job performed by Halliburton. It is the aim of our management and service personnel to deliver equipment and service of a standard unmatched in the service sector of the energy industry.

Please take the time to let us know if our performance met with your satisfaction. Please be as critical as possible to ensure we constantly improve our service. Your comments are of great value to us and are intended for the exclusive use of Halliburton.

CUSTOMER SATISFACTION SURVEY

CATEGORY	CUSTOMER SATISFACTION RESPONSE	
Survey Conducted Date	The date the survey was conducted	1/8/2012
Survey Interviewer	The survey interviewer is the person who initiated the survey.	PRICE JAMISON (HAL9235)
Customer Participation	Did the customer participate in this survey? (Y/N)	Yes
Customer Representative	Enter the Customer representative name	MIKE SCHULTZ
HSE	Was our HSE performance satisfactory? Circle Y or N	Yes
Equipment	Were you satisfied with our Equipment? Circle Y or N	Yes
Personnel	Were you satisfied with our people? Circle Y or N	Yes
Customer Comment	Customer's Comment	NONE

CUSTOMER SIGNATURE

Sales Order #: 9134505	Line Item: 10	Survey Conducted Date: 1/8/2012
Customer: WILLIAMS PRODUCTION RMT INC - EBUS		Job Type (BOM): CMT SURFACE CASING BOM
Customer Representative: MIKE SCHULTZ		API / UWI: (leave blank if unknown) 05-045-20836
Well Name: GM		Well Number: 514-14
Well Type: Development Well	Well Country: United States of America	
H2S Present:	Well State: Colorado	Well County: Garfield

KEY PERFORMANCE INDICATORS

General	
Survey Conducted Date	1/8/2012
The date the survey was conducted	

Cementing KPI Survey	
Type of Job	0
Select the type of job. (Cementing or Non-Cementing)	
Select the Maximum Deviation range for this Job	Deviated
What is the highest deviation for the job you just completed? This may not be the maximum well deviation.	
Total Operating Time (hours)	3
Total Operating Hours Including Rig-up, Pumping, Rig-down. Enter in decimal format.	
HSE Incident, Accident, Injury	No
HSE Incident, Accident, Injury. This should be recordable incidents only.	
Was the job purpose achieved?	Yes
Was the job delivered correctly as per customer agreed design?	
Operating Hours (Pumping Hours)	1
Total number of hours pumping fluid on this job. Enter in decimal format.	
Customer Non-Productive Rig Time (hrs)	0
Lost time due to Halliburton in the start, execution, or completion of an ordered service or product, or delays in a follow-on service. Enter in decimal format. 0 if none.	
Type of Rig Classification Job Was Performed	Drilling Rig (Portable)
Type Of Rig (classification) Job Was Performed On	
Number Of JSAs Performed	5
Number Of Jsas Performed	
Number of Unplanned Shutdowns	0
Unplanned shutdown is when injection stops for any period of time.	
Was this a Primary Cement Job (Yes / No)	Yes

Sales Order #: 9134505	Line Item: 10	Survey Conducted Date: 1/8/2012
Customer: WILLIAMS PRODUCTION RMT INC - EBUS		Job Type (BOM): CMT SURFACE CASING BOM
Customer Representative: MIKE SCHULTZ		API / UWI: (leave blank if unknown) 05-045-20836
Well Name: GM		Well Number: 514-14
Well Type: Development Well	Well Country: United States of America	
H2S Present:	Well State: Colorado	Well County: Garfield

Primary Cement Job= Casing job, Liner job, or Tie-back job.	
Did We Run Wiper Plugs? Did We Run Top And Bottom Casing Wiper Plugs?	Top
Mixing Density of Job Stayed in Designed Density Range (0-100%) Density Range defined as +/- .20 ppg. Calculation: Total BBLs cement mixed at designed density divided by total BBLs of cement multiplied by 100	98
Was Automated Density Control Used? Was Automated Density Control (ADC) Used ?	Yes
Pump Rate (percent) of Job Stayed At Designed Pump Rate Pump Rate range defined as +/- 1bbl/min. Calculation: Total BBLs of fluid pumped at the designed rate divided by Total BBLs of fluid pumped, multiplied by 100	98
Nbr of Remedial Sqz Jobs Rqd - Competition Number Of Remedial Squeeze Jobs Required After Primary Job Performed By Competition	0
Nbr of Remedial Plug Jobs Rqd - HES Number Of Remedial Plug Jobs Needed After Primary Plug Pumped By HES	0
Nbr of Remedial Sqz Jobs Rqd - HES Number Of Remedial Squeeze Jobs Required After Primary Job Performed By HES	0