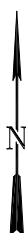


## LEGEND

- PROPOSED J12A LOCATION
- EXISTING ROAD



**Wasatch Surveying Associates**  
 906 Main Street Evanston, Wyoming 82930  
 Phone No. (307) 789-4545 Fax 307-789-5722



## EnCana Oil & Gas (USA) Inc.

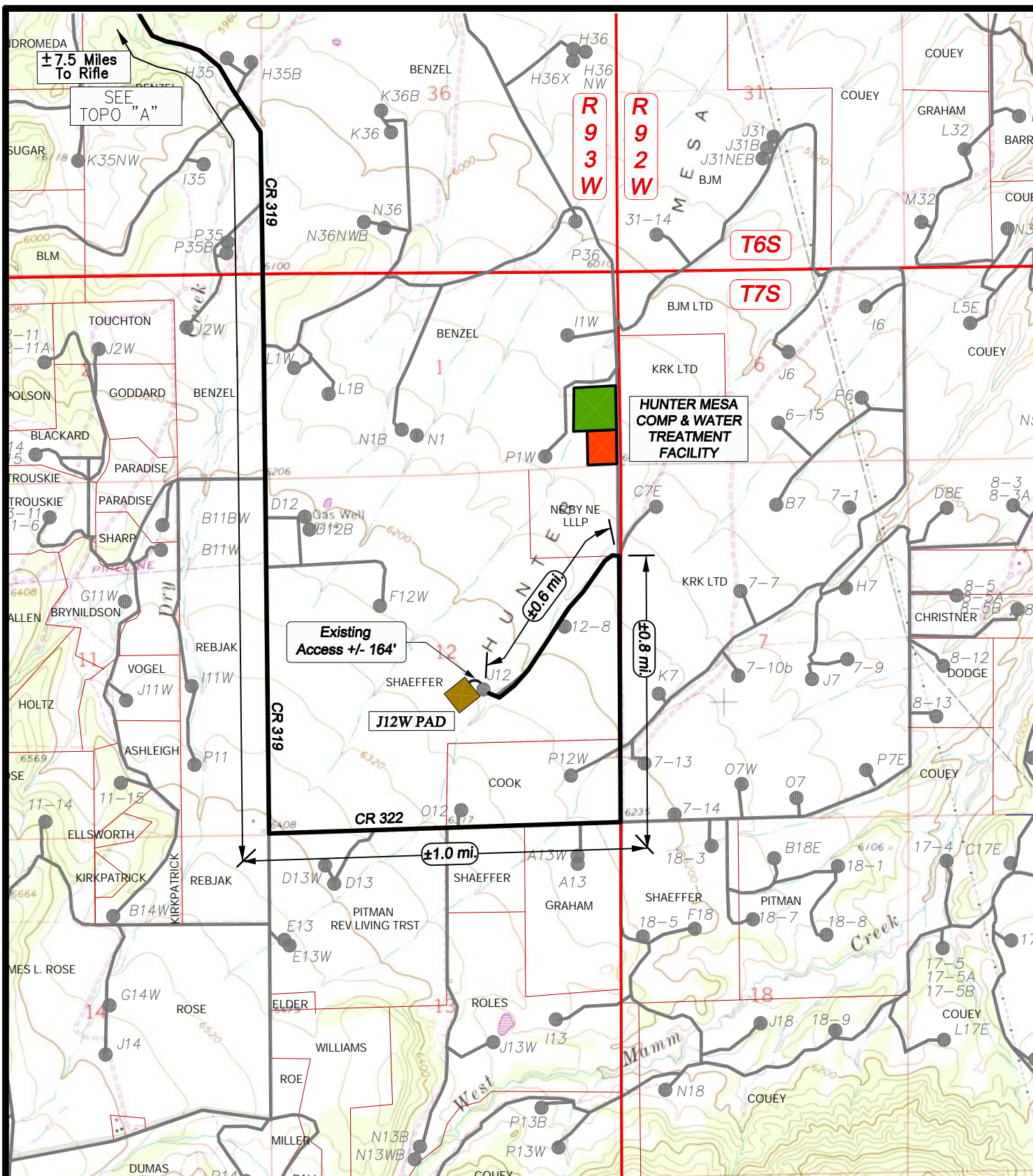
J12W PAD - ACCESS ROUTE  
 SECTION 12, T7S, R93W, 6th, P.M.  
 GARFIELD COUNTY, COLORADO

**TOPO A**

PROJECT NUMBER  
10-04-66  
 DATE: 8/15/12  
 SCALE: 1:100,000

**8**  
of 10



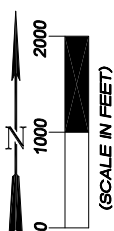


## LEGEND

- PROPOSED WELL PAD
- EXISTING ROAD



**Wasatch Surveying Associates**  
 906 Main Street Evanston, Wyoming 82930  
 Phone No. (307) 789-4545 Fax 307-789-5722



## Encana Oil & Gas (USA) Inc.

J12W PAD - ACCESS ROUTE  
 SECTION 12, T7S, R9W, 6th, P.M.  
 GARFIELD COUNTY, COLORADO

**TOPO B**

PROJECT NUMBER  
 10-04-66  
 DATE: 8/15/12  
 SCALE: 1" = 2000'

**9**  
 of 10