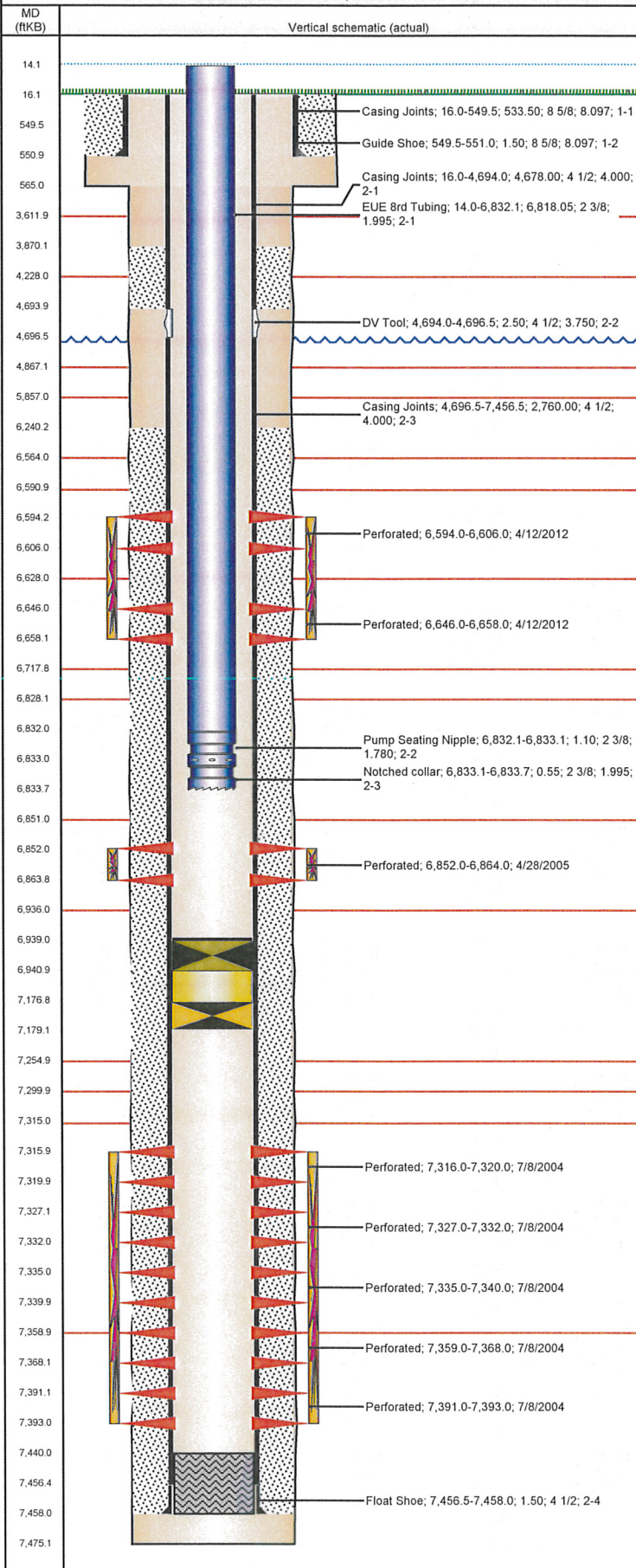


Well Name: DONOVAN D02-05JI

VERTICAL - ORIGINAL HOLE, 8/16/2012 10:13:05 AM



Well Header

API 05-123-22177	Business Unit WATTENBERG	District 15	Well Config VERTICAL
Original KB Elevation (ft) 4,724.00	KB - GL / MSL (ftKB) 16.00	Spud Date 6/22/2004	P & A Date

Comment

DV tool @ 4694

Directions To Well

CR 57 & CR40 1.6 MILES SOUTH TO GUTTERSON GATE,EAST ALONG FENCE 2/10 NORTH 1/10 INTO

Current PBTD (ftKB)

ORIGINAL HOLE - 6,939.0

Surface Location (Congressional)

Quarter 1	Quarter 2	Quarter 3	Quarter 4	Section	Township	Twnshp N...	Range	Rng E/W Dir
		SW	NW	2	3	N	64	W

Bottom Hole Location

North-South Distance (ft)	From N or S Line	East-West Distance (ft)	From E or W Line

Plug Back Total Depths

Date	Depth (ftKB)	Method	Com
6/27/2004	7,440.3	CASING TALLY	GUIDE SHOE, ORIGINAL PBTD
7/8/2004	7,446.0	CASED HOLE LOG	DEPTH LOGGER

Wellbore Sections

Section Des	Size (in)	Act Top (ftKB)	Act Btm (ftKB)
SURFACE	12 1/4	16.0	565.0
PRODUCTION	7 7/8	565.0	7,475.0

Zone Statuses

Zone Name	Status Date	Status	Job
CODELL	5/13/2005	PR	RECOMPLETION, 4/26/2005 00:00
CODELL	4/18/2012	PR	RE-FRAC & RECOMPLETE, 4/4/2012 08:30
J SAND	8/6/2004	PR	DRILLING/COMPLETION - ORIGINAL, 6/22/2004 00:00
J SAND	4/28/2005	SI	RECOMPLETION, 4/26/2005 00:00
NIOBRARA	4/18/2012	PR	RE-FRAC & RECOMPLETE, 4/4/2012 08:30

Casing Strings

Csg Des	Run Date	OD (in)	Wt/Len (lb/ft)	Grade	Top (ftKB)	Set Depth (ftKB)
Surface Casing	6/23/2004	8 5/8	24.00	J-55	16.0	551.0
Production	6/27/2004	4 1/2	11.60	M-80	16.0	7,458.0

Cement

Des	Top (ftKB)	Btm (ftKB)
SURFACE CASING CEMENT	16.0	551.0
PRODUCTION CASING CEMENT	3,870.0	4,694.0
PRODUCTION CASING CEMENT	6,240.0	7,458.0

Tubing Components

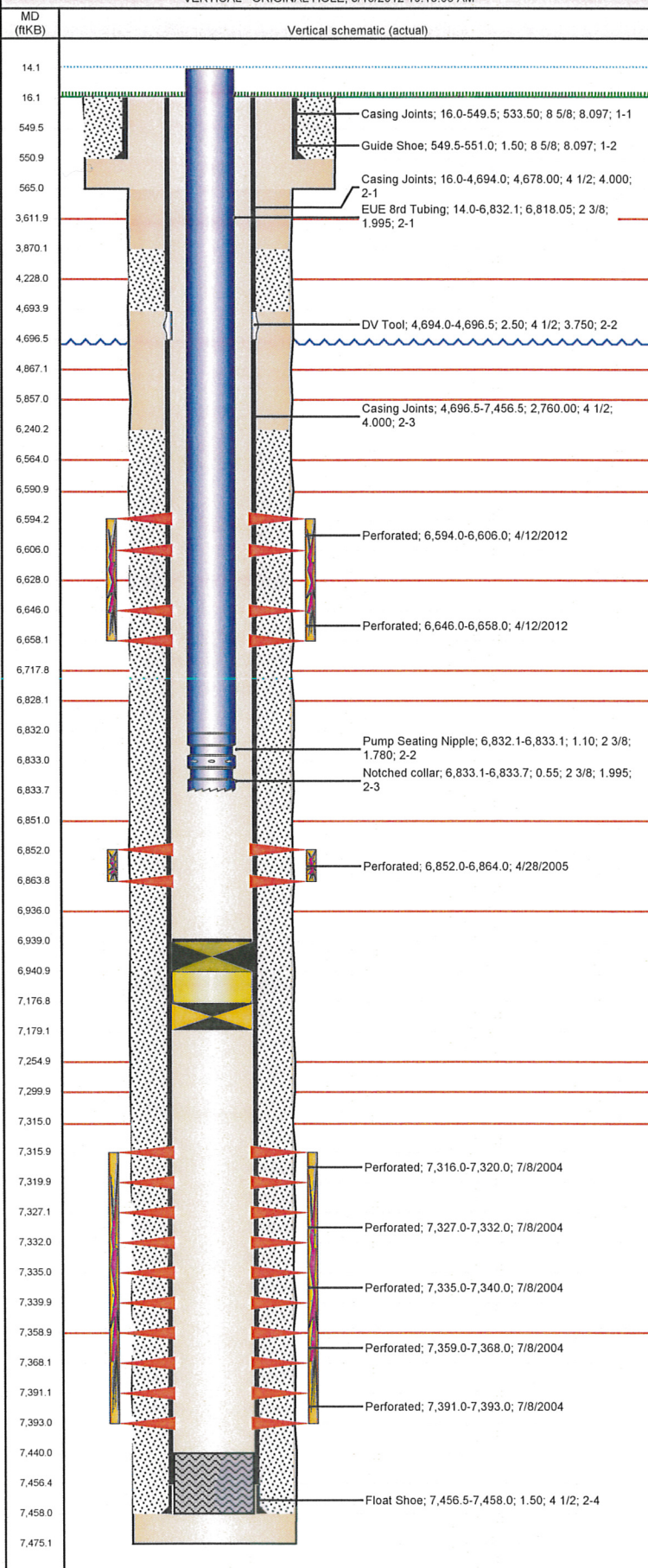
Item Des	OD (in)	Wt (lb/ft)	Grade	Jts	Len (ft)
EUE 8rd Tubing	2 3/8	4.70	J-55	212	6,818.05
Pump Seating Nipple	2 3/8	1.10	J-55	1	1.10
Notched collar	2 3/8	4.70	J-55	1	0.55

Perforation Data

Zone	Bnch/St g	Entered Shot Total	Top (ftKB)	Btm (ftKB)	Date
NIOBRARA, ORIGINAL HOLE	A	24	6,594.0	6,606.0	4/12/2012
NIOBRARA, ORIGINAL HOLE	B	24	6,646.0	6,658.0	4/12/2012
CODELL, ORIGINAL HOLE		48	6,852.0	6,864.0	4/28/2005
J SAND, ORIGINAL HOLE		16	7,316.0	7,320.0	7/8/2004
J SAND, ORIGINAL HOLE		20	7,327.0	7,332.0	7/8/2004
J SAND, ORIGINAL HOLE		20	7,335.0	7,340.0	7/8/2004
J SAND, ORIGINAL HOLE		36	7,359.0	7,368.0	7/8/2004
J SAND, ORIGINAL HOLE		8	7,391.0	7,393.0	7/8/2004

Well Name: **DONOVAN D02-05J1**

VERTICAL - ORIGINAL HOLE, 8/16/2012 10:13:06 AM



Stimulations & Treatments

Bnch/Stg	Date	Zone	Primary Job Type		
7/29/2004	J SAND, ORIGINAL HOLE	DRILLING/COMPLETION - ORIGINAL			
Comment					
29-July-2004 *** CALFRAC DYNAFLOW-2 ** A&W WELL WATER *** 24.0 BPM *** TRIPLE ENTRY *** MIRU CALFRAC to 2 3/8" Tubing. The J-Sand was Frac'd via TRIPLE ENTRY with 2 3/8" Tubing from 7,316' - 7,393'. MINI-FRAC ANALYSIS: ISIP = 1,070 psi, 5-min =					
Total Add Amount		Total Clean Volume...	Vol Slurry Tot (gal)	Vol Gas Tot (MCF)	
Proppant Ottawa 442280 lb		1178352.08	132678.00		
Avg Treat Pressure (psi)		Max Treat Pressure (psi)	Avg Treat Rate (bbl/min)	Max Treat Rate (bbl/min)	
3,500.0		4,708.0	24.50	24.50	
Bnch/Stg	Date	Zone	Primary Job Type		
5/10/2005	CODELL, ORIGINAL HOLE	RECOMPLETION			
Comment					
FRAC'D VIA DEADSTRING					
Total Add Amount		Total Clean Volume...	Vol Slurry Tot (gal)	Vol Gas Tot (MCF)	
Proppant Ottawa 269400 lb					
Avg Treat Pressure (psi)		Max Treat Pressure (psi)	Avg Treat Rate (bbl/min)	Max Treat Rate (bbl/min)	
			0.58		
Bnch/Stg	Date	Zone	Primary Job Type		
4/12/2012	CODELL, ORIGINAL HOLE	RE-FRAC & RECOMPLETE			
Comment					
Total Add Amount		Total Clean Volume...	Vol Slurry Tot (gal)	Vol Gas Tot (MCF)	
Proppant Ottawa 239978.396 lb		135355.92	146249.04		
Avg Treat Pressure (psi)		Max Treat Pressure (psi)	Avg Treat Rate (bbl/min)	Max Treat Rate (bbl/min)	
4,098.0		4,492.0	18.80	19.00	
Bnch/Stg	Date	Zone	Primary Job Type		
A & B	4/12/2012	NIOBRARA, ORIGINAL HOLE	RE-FRAC & RECOMPLETE		
Comment					
Total Add Amount		Total Clean Volume...	Vol Slurry Tot (gal)	Vol Gas Tot (MCF)	
Proppant Ottawa 255340.9 lb		155411.35	166993.26		
Avg Treat Pressure (psi)		Max Treat Pressure (psi)	Avg Treat Rate (bbl/min)	Max Treat Rate (bbl/min)	
4,072.0		4,245.0	41.10	44.50	
Other In Hole					
Run Date	Des		OD (in)	Top (ftKB)	Btm (ftKB)
4/28/2005	Retrievable Bridge Plug		4	7,177.0	7,179.0
4/5/2012	Sand plug		4	6,941.0	7,177.0
4/12/2012	Composite Flow Through Plug		3.99	6,939.0	6,941.0
Logs					
Date	Type		Top (ftKB)	Btm (ftKB)	
6/26/2004	COMPENSATED DENSITY		4,150.0	7,459.0	
6/26/2004	INDUCTION		551.0	7,479.0	
7/8/2004	CBL/CCL/GR		3,640.0	7,443.0	