
WPX ENERGY ROCKY MOUNTAIN LLC-EBUS

**GM 414-14
GRAND VALLEY
Garfield County , Colorado**

Cement Surface Casing
14-Mar-2012

Post Job Report

The Road to Excellence Starts with Safety

Sold To #: 300721	Ship To #: 2898358	Quote #:	Sales Order #: 9322321
Customer: WPX ENERGY ROCKY MOUNTAIN LLC-EBUS		Customer Rep: SCHULTZ, MIKE	
Well Name: GM		Well #: 414-14	API/UWI #: 05-045-20839
Field: GRAND VALLEY	City (SAP): PARACHUTE	County/Parish: Garfield	State: Colorado
Lat: N 39.427 deg. OR N 39 deg. 25 min. 38.489 secs.		Long: W 108.082 deg. OR W -109 deg. 55 min. 5.858 secs.	
Contractor: H&P 271		Rig/Platform Name/Num: H&P 271	
Job Purpose: Cement Surface Casing			
Well Type: Development Well		Job Type: Cement Surface Casing	
Sales Person: SCOTT, KYLE		Srvc Supervisor: MUHLESTEIN, RYAN MBU ID Emp #: 453609	

Job Personnel

HES Emp Name	Exp Hrs	Emp #	HES Emp Name	Exp Hrs	Emp #	HES Emp Name	Exp Hrs	Emp #
BATH, KYLE Thomas	7	477632	EICKHOFF, ROBERT Edward	7	495311	ENGBERG, KEVIN W	7	454218
MUHLESTEIN, RYAN Herrick	7	453609						

Equipment

HES Unit #	Distance-1 way	HES Unit #	Distance-1 way	HES Unit #	Distance-1 way	HES Unit #	Distance-1 way
10248057	60 mile	10616651C	60 mile	10744549	60 mile	10995027	60 mile
11583931	60 mile	11808827	60 mile				

Job Hours

Date	On Location Hours	Operating Hours	Date	On Location Hours	Operating Hours	Date	On Location Hours	Operating Hours
3/14/12	7	3						

TOTAL Total is the sum of each column separately

Job

Job Times

Formation Name	Top	Bottom	Called Out	Date	Time	Time Zone
Formation Depth (MD)			On Location	14 - Mar - 2012	06:00	MST
Form Type		BHST	Job Started	14 - Mar - 2012	10:30	MST
Job depth MD	1440. ft	Job Depth TVD	1440. ft	Job Completed	14 - Mar - 2012	16:13
Water Depth		Wk Ht Above Floor	4. ft	Departed Loc	14 - Mar - 2012	17:30
Perforation Depth (MD)	From	To				

Well Data

Description	New / Used	Max pressure psig	Size in	ID in	Weight lbf/ft	Thread	Grade	Top MD ft	Bottom MD ft	Top TVD ft	Bottom TVD ft
OPEN HOLE SECTION				13.5				.	1440.		
SURFACE CASING	Unknown		9.625	9.001	32.3		H-40	.	1423.		

Sales/Rental/3rd Party (HES)

Description	Qty	Qty uom	Depth	Supplier
PLUG,CMTG, TOP, 9 5/8, HWE, 8.16 MIN/9.06 MA	1	EA		

Tools and Accessories

Type	Size	Qty	Make	Depth	Type	Size	Qty	Make	Depth	Type	Size	Qty	Make
Guide Shoe					Packer					Top Plug	9.625	1	HES
Float Shoe					Bridge Plug					Bottom Plug			
Float Collar					Retainer					SSR plug set			
Insert Float										Plug Container	9.625	1	HES
Stage Tool										Centralizers			

Miscellaneous Materials

Gelling Agt	Conc	Surfactant	Conc	Acid Type	Qty	Conc %
Treatment Fld	Conc	Inhibitor	Conc	Sand Type	Size	Qty

Fluid Data									
Stage/Plug #: 1									
Fluid #	Stage Type	Fluid Name	Qty	Qty uom	Mixing Density lbm/gal	Yield ft ³ /sk	Mix Fluid Gal/sk	Rate bbl/min	Total Mix Fluid Gal/sk
1	Fresh Water		20.00	bbl	8.33	.0	.0	3.0	
2	Lead Cement	VERSACEM (TM) SYSTEM (452010)	200.0	sacks	12.3	2.38	13.75	8.0	13.75
		13.75 Gal FRESH WATER							
3	Tail Cement	VERSACEM (TM) SYSTEM (452010)	160.0	sacks	12.8	2.11	11.75	8.0	11.75
		11.75 Gal FRESH WATER							
4	Displacement Fluid		108.00	bbl	10.1	.0	.0	10.0	
Calculated Values		Pressures		Volumes					
Displacement	108.4	Shut In: Instant		Lost Returns	0	Cement Slurry	144.9	Pad	
Top Of Cement	SURFACE	5 Min		Cement Returns	22	Actual Displacement	108.4	Treatment	
Frac Gradient		15 Min		Spacers	20	Load and Breakdown		Total Job	273.3
Rates									
Circulating	10	Mixing	8	Displacement	10	Avg. Job	9		
Cement Left In Pipe	Amount	45 ft	Reason	Shoe Joint					
Frac Ring # 1 @	ID	Frac ring # 2 @	ID	Frac Ring # 3 @	ID	Frac Ring # 4 @	ID		
The Information Stated Herein Is Correct				Customer Representative Signature					

The Road to Excellence Starts with Safety

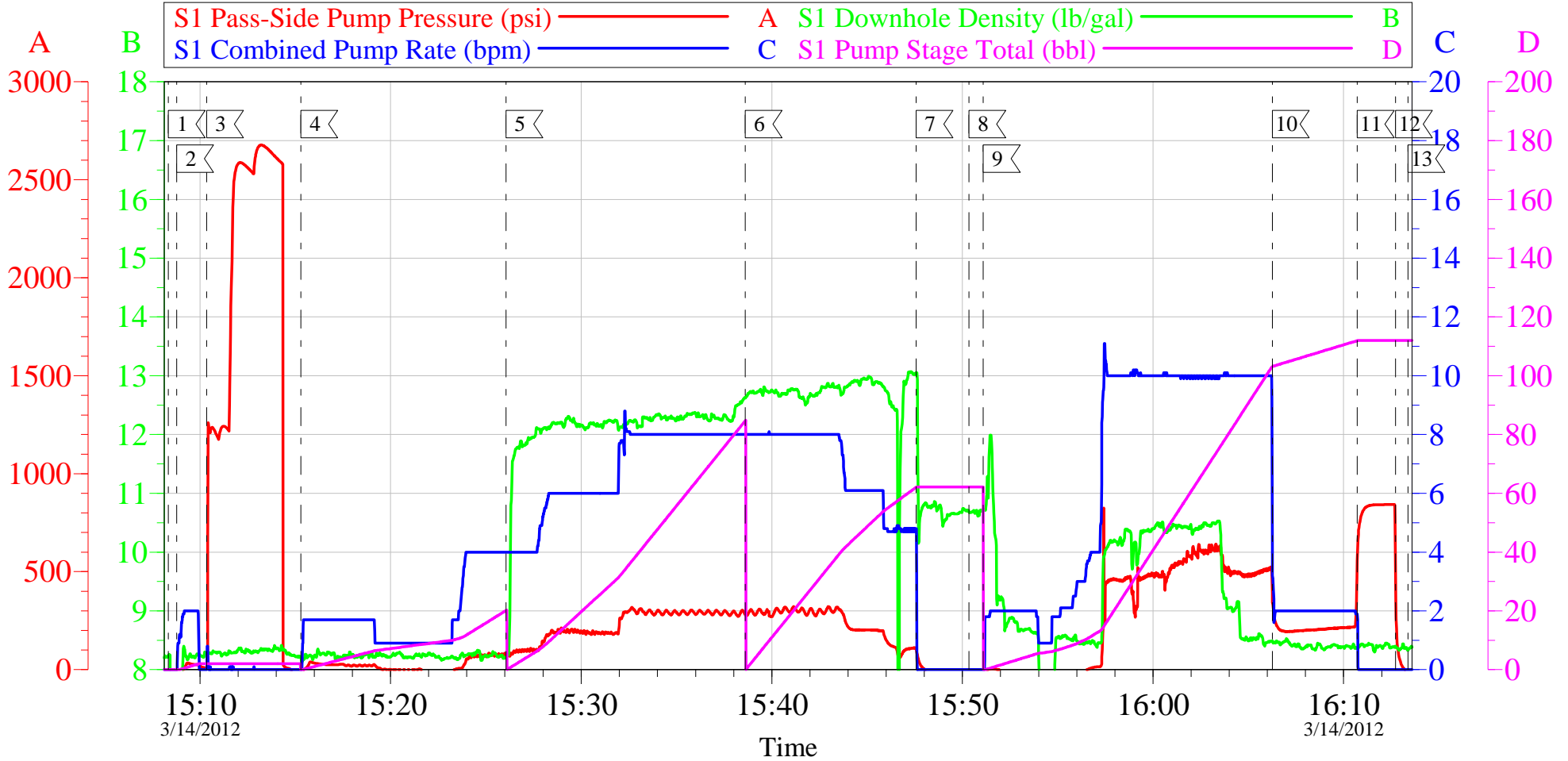
Sold To #: 300721	Ship To #: 2898358	Quote #:	Sales Order #: 9322321
Customer: WPX ENERGY ROCKY MOUNTAIN LLC-EBUS		Customer Rep: SCHULTZ, MIKE	
Well Name: GM		Well #: 414-14	API/UWI #: 05-045-20839
Field: GRAND VALLEY	City (SAP): PARACHUTE	County/Parish: Garfield	State: Colorado
Legal Description:			
Lat: N 39.427 deg. OR N 39 deg. 25 min. 38.489 secs.		Long: W 108.082 deg. OR W -109 deg. 55 min. 5.858 secs.	
Contractor: H&P 271		Rig/Platform Name/Num: H&P 271	
Job Purpose: Cement Surface Casing			Ticket Amount:
Well Type: Development Well		Job Type: Cement Surface Casing	
Sales Person: SCOTT, KYLE		Srvc Supervisor: MUHLESTEIN, RYAN	MBU ID Emp #: 453609

Activity Description	Date/Time	Cht #	Rate bbl/min	Volume bbl		Pressure psig		Comments
				Stage	Total	Tubing	Casing	
Call Out	03/14/2012 06:00							
Pre-Convoy Safety Meeting	03/14/2012 09:00							WITH ALL HES PERSONNEL SAFE DRIVING PRACTICES AND TRAVEL ROUTE REVIEWED
Arrive at Location from Service Center	03/14/2012 10:30							RIG PULLING DRILL PIPE
Assessment Of Location Safety Meeting	03/14/2012 11:15							WITH ALL HES PERSONNEL
Pre-Rig Up Safety Meeting	03/14/2012 11:30							WITH ALL HES PERSONNEL
Rig-Up Equipment	03/14/2012 12:00							1 ELITE HT 400 PUMP, 1 660 BULK TRUCK, 1 F-450 PICK-UP, 1 PLUG CONTAINER, 2" IRON TO STAND PIPE
Circulate Well	03/14/2012 14:00							CASING ON BOTTOM, RIG CIRCULATES USING HES SWAGE AND IRON, CIRC. 1 HR, 10 BPM, 250 PSI. MUD REPORT 10.1 PPG PV 35, YP 25.
Pre-Job Safety Meeting	03/14/2012 14:50							WITH ALL HES PERSONNEL, RIG CREW AND CO REP
Start Job	03/14/2012 15:08							TD 1440', TP 1423', FC 1378' SJ 45', OH 13.5", SURFACE CASING 9.625" 32.3# H-40.
Pump Water	03/14/2012 15:08		2	2			41.0	FRESH H2O, TO PRIME LINES
Test Lines	03/14/2012 15:10							HELD 2692 PSI 2 MIN NO LEAKS

Activity Description	Date/Time	Cht #	Rate bbl/min	Volume bbl		Pressure psig		Comments
				Stage	Total	Tubing	Casing	
Pump Spacer 1	03/14/2012 15:15		3	20			90.0	FRESH H2O
Pump Lead Cement	03/14/2012 15:26		8	84.8			320.0	200 SKS 12.3 PPG 2.38 FT3/SK 13.75 GAL/SK WEIGHED VERIFIED VIA MUD SCALES WET AND DRY SAMPLES SUBMITTED
Pump Tail Cement	03/14/2012 15:38		8	60.1			322.0	160 SKS 12.8 PPG 2.11 FT3/SK 11.75 GAL/SK WEIGHED VERIFIED VIA MUD SCALES WET AND DRY SAMPLES SUBMITTED
Shutdown	03/14/2012 15:47							WASH UP ON TOP OF PLUG
Drop Top Plug	03/14/2012 15:50							VERIFY PLUG LAUNCHED
Pump Displacement	03/14/2012 15:51		10	108.4			624.0	CMT RETURNS 86 BBLs INTO DIS, 22 BBLs TO SURFACE
Slow Rate	03/14/2012 16:06		2	98			230.0	SLOW RATE 10 BBLs PRIOR TO CALCULATED DISPLACEMENT
Bump Plug	03/14/2012 16:10		2	108.4			830.0	BUMP PLUG HOLD 2 MINS
Check Floats	03/14/2012 16:12							FLOATS HOLDING, GOOD RETURNS THROUGHOUT JOB
End Job	03/14/2012 16:13							NO ADD HOURS OR DERRICK CHARGE. 80 LBS SUGAR USED
Pre-Rig Down Safety Meeting	03/14/2012 16:20							WITH ALL HES PERSONNEL
Rig-Down Equipment	03/14/2012 16:30							AREA FREE FROM DEBRIS
Pre-Convoy Safety Meeting	03/14/2012 17:25							WITH ALL HES PERSONNEL
Crew Leave Location	03/14/2012 17:30							THANK YOU FOR USING HALLIBURTON CEMENT DEPARTMENT. RYAN MUHLESTEIN AND CREW

WPX ENERGY ROCKY MTN - GM 414-14

SURFACE

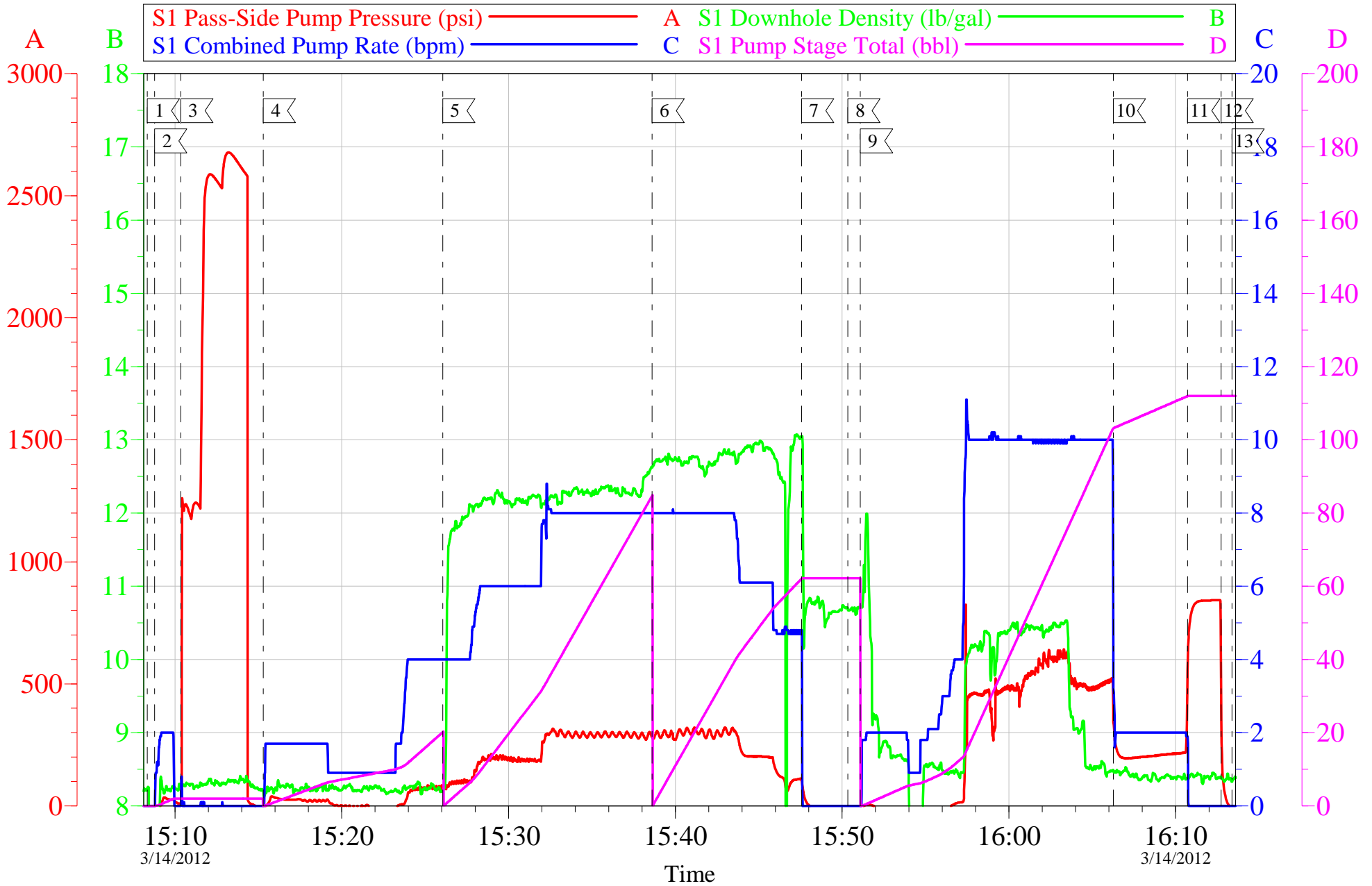


Local Event Log								
1	START JOB	15:08:20	2	PRIME LINES	15:08:47	3	PRESSURE TEST	15:10:21
4	PUMP H2O SPACER	15:15:18	5	PUMP LEAD CMT	15:26:03	6	PUMP TAIL CMT	15:38:36
7	SHUTDOWN	15:47:34	8	DROP PLUG	15:50:20	9	PUMP DISPALCEMENT	15:51:06
10	SLOW RATE	16:06:16	11	BUMP PLUG	16:10:43	12	CHECK FLOATS	16:12:43
13	END JOB	16:13:22						

Customer:	WPX ENERGY ROCKY MTN	Job Date:	14-Mar-2012	Sales Order #:	9322321
Well Description:	GM 414-14	Job Type:	SURFACE	ADC Used:	YES
Company Rep:	MIKE SHULTZ	Cement Supervisor:	RYAN MUHLESTEIN	ELITE 4	KYLE BATH

WPX ENERGY ROCKY MTN - GM 414-14

SURFACE



Customer:	WPX ENERGY ROCKY MTN	Job Date:	14-Mar-2012	Sales Order #:	9322321
Well Description:	GM 414-14	Job Type:	SURFACE	ADC Used:	YES
Company Rep:	MIKE SHULTZ	Cement Supervisor:	RYAN MUHLESTEIN	ELITE 4	KYLE BATH

OptiCem v6.4.10
14-Mar-12 16:23

HALLIBURTON

Water Analysis Report

Company: WPX ENERGY

Date: 3/14/2012

Submitted by: RYAN MUHLESTEIN

Date Rec.: 3/14/2012

Attention: J. Trout

S.O.# 9322321

Lease GM

Job Type: SURFACE

Well # 414-14

Specific Gravity	<i>MAX</i>	1
pH	<i>8</i>	7
Potassium (K)	<i>5000</i>	0 Mg / L
Calcium (Ca)	<i>500</i>	200 Mg / L
Iron (FE2)	<i>300</i>	0 Mg / L
Chlorides (Cl)	<i>3000</i>	250 Mg / L
Sulfates (SO ₄)	<i>1500</i>	below 200 Mg / L
Chlorine (Cl ₂)		0 Mg / L
Temp	<i>40-80</i>	55 Deg
Total Dissolved Solids		350 Mg / L

Respectfully: RYAN MUHLESTEIN

Title: CEMENTING SUPERVISOR

Location: Grand Junction, CO

NOTICE:

This report is limited to the described sample tested. Any person using or relying on this report agrees that Halliburton shall not be liable for any loss or damage whether due to act or omission resulting from such report or its

Sales Order #: 9322321	Line Item: 10	Survey Conducted Date: 3/14/2012
Customer: WPX ENERGY ROCKY MOUNTAIN LLC-EBUS		Job Type (BOM): CMT SURFACE CASING BOM
Customer Representative: MIKE SHULTZ		API / UWI: (leave blank if unknown) 05-045-20839
Well Name: GM		Well Number: 414-14
Well Type: Development Well	Well Country: United States of America	
H2S Present: No	Well State: Colorado	Well County: Garfield

Dear Customer,

We hope that you were satisfied with the service quality of this job performed by Halliburton. It is the aim of our management and service personnel to deliver equipment and service of a standard unmatched in the service sector of the energy industry.

Please take the time to let us know if our performance met with your satisfaction. Please be as critical as possible to ensure we constantly improve our service. Your comments are of great value to us and are intended for the exclusive use of Halliburton.

CUSTOMER SATISFACTION SURVEY

CATEGORY	CUSTOMER SATISFACTION RESPONSE	
Survey Conducted Date	The date the survey was conducted	3/14/2012
Survey Interviewer	The survey interviewer is the person who initiated the survey.	RYAN MUHLESTEIN (HB21105)
Customer Participation	Did the customer participate in this survey? (Y/N)	Yes
Customer Representative	Enter the Customer representative name	MIKE SHULTZ
HSE	Was our HSE performance satisfactory? Circle Y or N	Yes
Equipment	Were you satisfied with our Equipment? Circle Y or N	Yes
Personnel	Were you satisfied with our people? Circle Y or N	Yes
Customer Comment	Customer's Comment	

CUSTOMER SIGNATURE

Sales Order #: 9322321	Line Item: 10	Survey Conducted Date: 3/14/2012
Customer: WPX ENERGY ROCKY MOUNTAIN LLC-EBUS		Job Type (BOM): CMT SURFACE CASING BOM
Customer Representative: MIKE SHULTZ		API / UWI: (leave blank if unknown) 05-045-20839
Well Name: GM		Well Number: 414-14
Well Type: Development Well	Well Country: United States of America	
H2S Present: No	Well State: Colorado	Well County: Garfield

KEY PERFORMANCE INDICATORS

General	
Survey Conducted Date	3/14/2012
The date the survey was conducted	

Cementing KPI Survey	
Type of Job	0
Select the type of job. (Cementing or Non-Cementing)	
Select the Maximum Deviation range for this Job	Vertical
What is the highest deviation for the job you just completed? This may not be the maximum well deviation.	
Total Operating Time (hours)	3
Total Operating Hours Including Rig-up, Pumping, Rig-down. Enter in decimal format.	
HSE Incident, Accident, Injury	No
HSE Incident, Accident, Injury. This should be recordable incidents only.	
Was the job purpose achieved?	Yes
Was the job delivered correctly as per customer agreed design?	
Operating Hours (Pumping Hours)	1
Total number of hours pumping fluid on this job. Enter in decimal format.	
Customer Non-Productive Rig Time (hrs)	0
Lost time due to Halliburton in the start, execution, or completion of an ordered service or product, or delays in a follow-on service. Enter in decimal format. 0 if none.	
Type of Rig Classification Job Was Performed	Drilling Rig (Portable)
Type Of Rig (classification) Job Was Performed On	
Number Of JSAs Performed	6
Number Of Jsas Performed	
Number of Unplanned Shutdowns	0
Unplanned shutdown is when injection stops for any period of time.	
Was this a Primary Cement Job (Yes / No)	Yes

Sales Order #: 9322321	Line Item: 10	Survey Conducted Date: 3/14/2012
Customer: WPX ENERGY ROCKY MOUNTAIN LLC-EBUS		Job Type (BOM): CMT SURFACE CASING BOM
Customer Representative: MIKE SHULTZ		API / UWI: (leave blank if unknown) 05-045-20839
Well Name: GM		Well Number: 414-14
Well Type: Development Well	Well Country: United States of America	
H2S Present: No	Well State: Colorado	Well County: Garfield

Primary Cement Job= Casing job, Liner job, or Tie-back job.	
Did We Run Wiper Plugs? Did We Run Top And Bottom Casing Wiper Plugs?	Top
Mixing Density of Job Stayed in Designed Density Range (0-100%) Density Range defined as +/- .20 ppg. Calculation: Total BBLs cement mixed at designed density divided by total BBLs of cement multiplied by 100	98
Was Automated Density Control Used? Was Automated Density Control (ADC) Used ?	Yes
Pump Rate (percent) of Job Stayed At Designed Pump Rate Pump Rate range defined as +/- 1bbl/min. Calculation: Total BBLs of fluid pumped at the designed rate divided by Total BBLs of fluid pumped, multiplied by 100	98
Nbr of Remedial Sqz Jobs Rqd - Competition Number Of Remedial Squeeze Jobs Required After Primary Job Performed By Competition	0
Nbr of Remedial Plug Jobs Rqd - HES Number Of Remedial Plug Jobs Needed After Primary Plug Pumped By HES	0
Nbr of Remedial Sqz Jobs Rqd - HES Number Of Remedial Squeeze Jobs Required After Primary Job Performed By HES	0