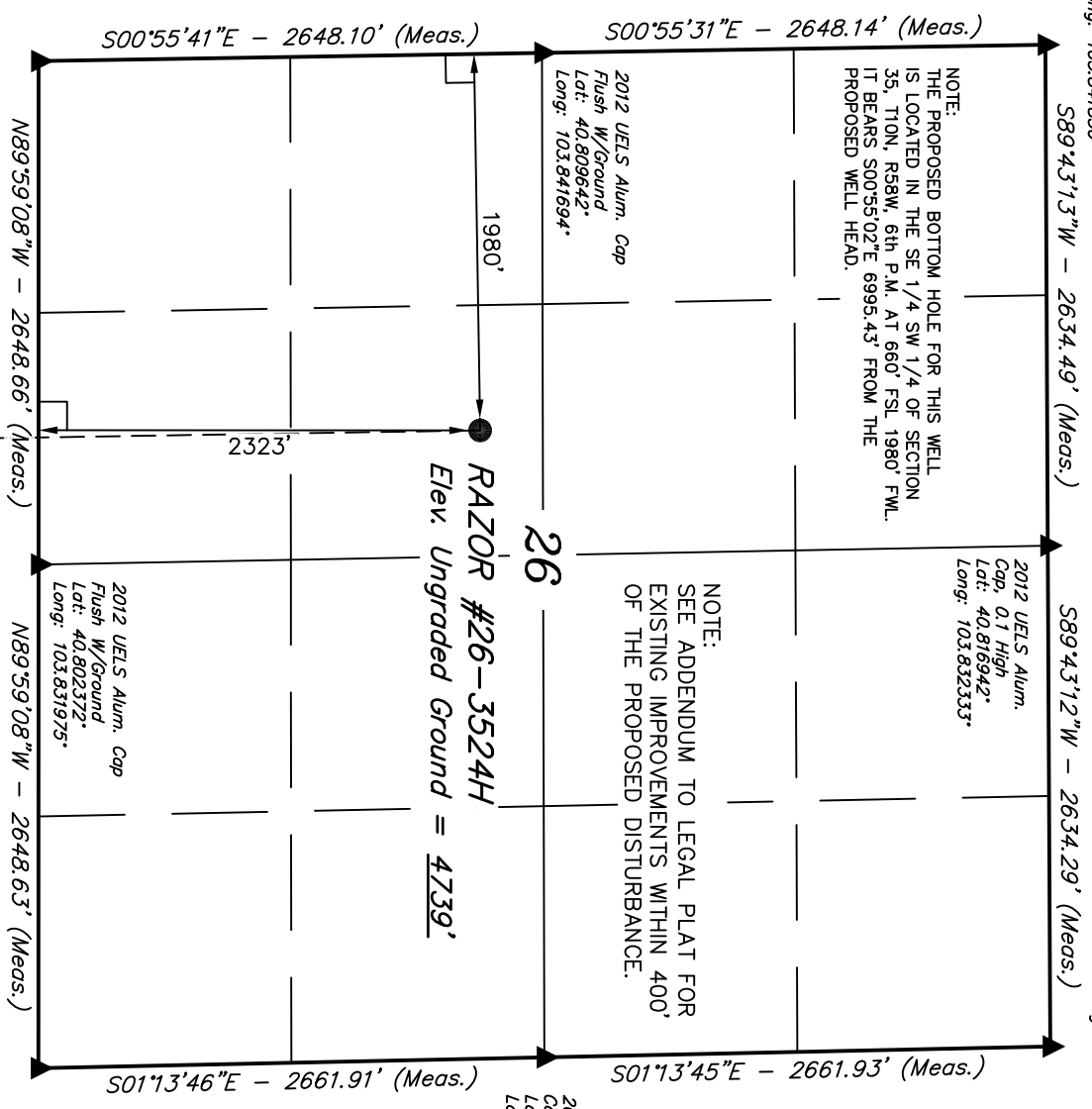


T10N, R58W, 6th P.M.

2010 UELS Alum. Cap
Flush W/Ground
Lat: 40.816906°
Long: 103.841694°

2010 UELS Alum. Cap, 0.3' High
Lat: 40.816975°
Long: 103.822819°



NOTE:
THE PROPOSED BOTTOM HOLE FOR THIS WELL IS LOCATED IN THE SE 1/4 SW 1/4 OF SECTION 35, T10N, R58W, 6th P.M. AT 660' FSL 1980' F.W.L. IT BEARS S00°55'02"E, 6995.43' FROM THE PROPOSED WELL HEAD.

NOTE:
SEE ADDENDUM TO LEGAL PLAT FOR EXISTING IMPROVEMENTS WITHIN 400' OF THE PROPOSED DISTURBANCE.

RAZOR #26-3524H
Elev. Ungraded Ground = 4739'

WHITTING OIL & GAS CORP.

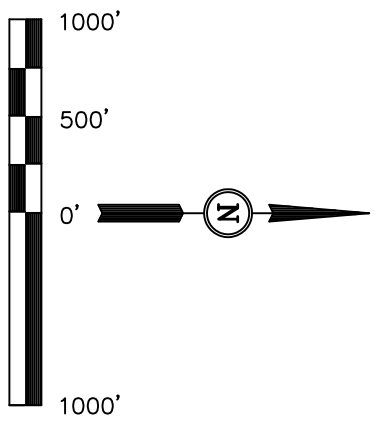
Well location, RAZOR #26-3524H (SURFACE LOCATION), located as shown in the NE 1/4 SW 1/4 of Section 26, T10N, R58W, 6th P.M., Weld County, Colorado.

BASIS OF ELEVATION

SPOT ELEVATION LOCATED AT THE NORTHEAST CORNER OF SECTION 15, T9N, R58W, 6th P.M. TAKEN FROM THE GATEHOOK SPRING, QUADRANGLE, COLORADO, WELD COUNTY, 7.5 MINUTE QUAD (TOPOGRAPHIC MAP) PUBLISHED BY THE UNITED STATES DEPARTMENT OF THE INTERIOR, GEOLOGICAL SURVEY. SAID ELEVATION IS MARKED AS BEING 4679 FEET.

BASIS OF BEARINGS

BASIS OF BEARINGS IS A G.P.S. OBSERVATION.



CERTIFICATE
THIS IS TO CERTIFY THAT THE ABOVE PLAT WAS PREPARED FROM FIELD NOTES OF ACTUAL SURVEYS MADE BY ME OR UNDER MY SUPERVISION AND THAT THE SAME ARE TRUE AND CORRECT TO THE BEST OF MY KNOWLEDGE AND BELIEF.

REGISTERED LAND SURVEYOR
REGISTRATION No. 17492
STATE OF COLORADO
05-09-12

REVISED: 05-09-12 W.M.

UINTAH ENGINEERING & LAND SURVEYING
85 SOUTH 200 EAST - VERNAL, UTAH 84078
(435) 789-1017

SCALE	1" = 1000'	DATE SURVEYED:	04-26-12	DATE DRAWN:	04-30-12
-------	------------	----------------	----------	-------------	----------

PARTY	J.H. C.M. R.L.L.	REFERENCES	G.I.O. PLAT
-------	------------------	------------	-------------

WEATHER	WARM	FILE	WHITTING OIL & GAS CORP.
---------	------	------	--------------------------

PDOP = 2.6

NAD 83 (SURFACE LOCATION)	
LATITUDE =	40°48'31.49" (40.808747)
LONGITUDE =	103°50'04.29" (103.834525)
NAD 27 (SURFACE LOCATION)	
LATITUDE =	40°48'31.54" (40.808761)
LONGITUDE =	103°50'02.48" (103.834022)

2010 UELS Alum. Cap
Flush W/Ground
E/W Fence
Lat: 40.802375°
Long: 103.841542°

2010 UELS Alum. Cap
Flush W/Ground
Fence Corner
Lat: 40.802369°
Long: 103.822411°

Target Bottom Hole

- LEGEND:**
- = 90° SYMBOL
 - = PROPOSED WELL HEAD.
 - ▲ = SECTION CORNERS LOCATED.

T10N, R58W, 6th P.M.

WHITTING OIL & GAS CORP.

2010 UELS Alum. Cap
Flush W/Ground
E/W Fence
Lot: 40.802375°
Long: 103.841542°

2012 UELS Alum. Cap
Flush W/Ground
Lot: 40.802372°
Long: 103.831975°

2010 UELS Alum. Cap
Flush W/Ground
Fence Corner
Lot: 40.802369°
Long: 103.822411°

● Surface Location

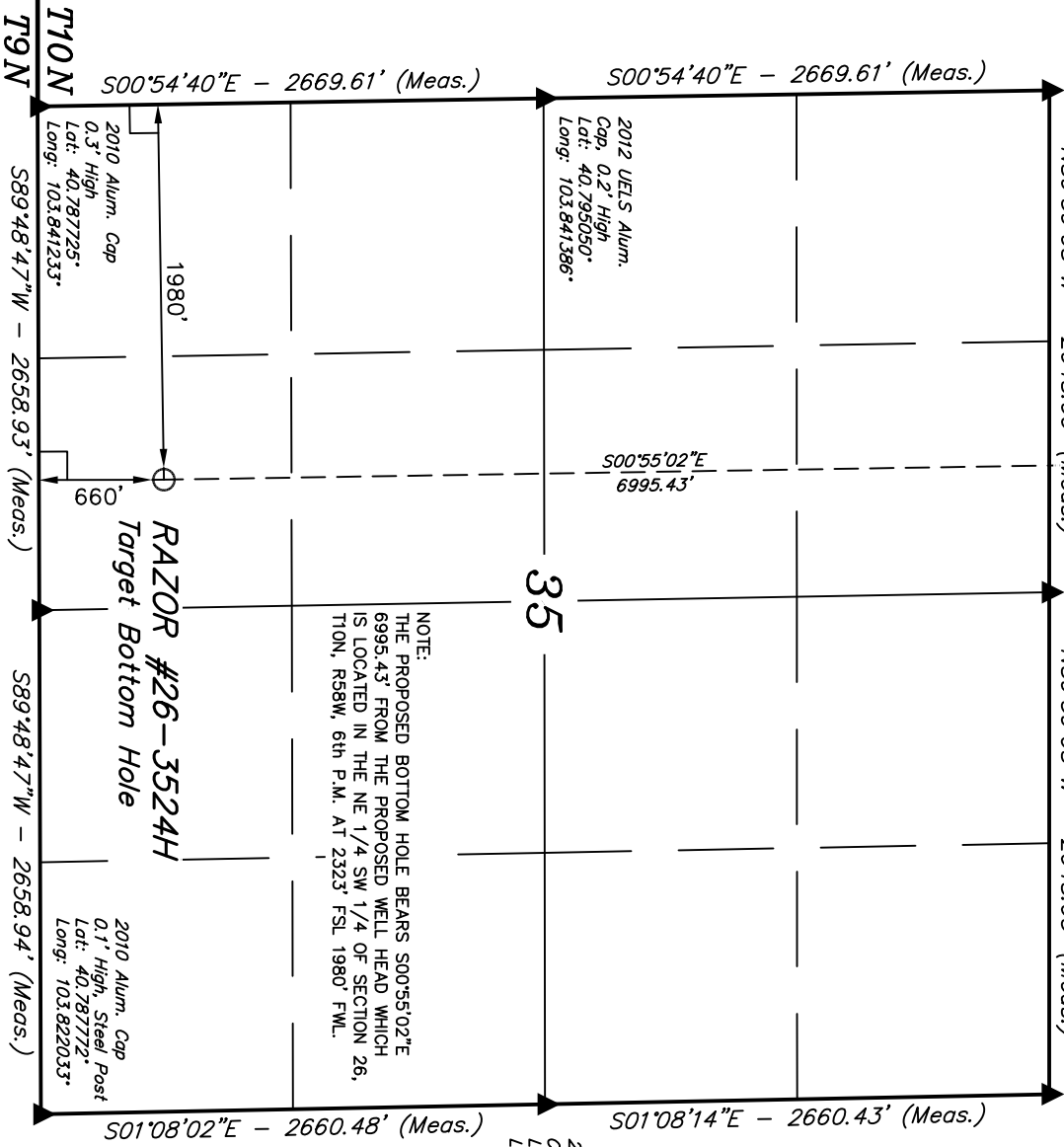
Well location, RAZOR #26-3524H (TARGET BOTTOM HOLE), located as shown in the NE 1/4 SW 1/4 of Section 35, T10N, R58W, 6th P.M., Weld County, Colorado.

BASIS OF ELEVATION

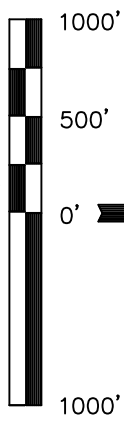
SPOT ELEVATION LOCATED AT THE NORTHEAST CORNER OF SECTION 15, T9N, R58W, 6th P.M. TAKEN FROM THE GATEHOOK SPRING, QUADRANGLE, COLORADO, WELD COUNTY, 7.5 MINUTE QUAD (TOPOGRAPHIC MAP) PUBLISHED BY THE UNITED STATES DEPARTMENT OF THE INTERIOR, GEOLOGICAL SURVEY. SAID ELEVATION IS MARKED AS BEING 4679 FEET.

BASIS OF BEARINGS

BASIS OF BEARINGS IS A G.P.S. OBSERVATION.



2012 UELS Alum. Cap, 0.5' High
Lot: 40.795069°
Long: 103.822222°



CERTIFICATE
THIS IS TO CERTIFY THAT THE ABOVE PLAT WAS PREPARED FROM FIELD NOTES OF ACTUAL SURVEYS MADE BY ME OR UNDER MY SUPERVISION AND THAT THE SAME ARE TRUE AND CORRECT TO THE BEST OF MY KNOWLEDGE AND BELIEF.

REGISTERED LAND SURVEYOR
REGISTRATION No. 17492
STATE OF COLORADO
05-09-12

REVISED: 05-09-12 W.M.

UINTAH ENGINEERING & LAND SURVEYING
85 SOUTH 200 EAST - VERNAL, UTAH 84078
(435) 789-1017

SCALE	1" = 1000'	DATE SURVEYED:	04-26-12	DATE DRAWN:	04-30-12
PARTY	J.H. C.M. R.L.L.	REFERENCES	G.I.O. PLAT		
WEATHER	WARM	FILE	WHITTING OIL & GAS CORP.		

LEGEND:
 L = 90° SYMBOL
 ● = PROPOSED WELL HEAD.
 ▲ = SECTION CORNERS LOCATED.

NAD 83 (TARGET BOTTOM HOLE)	LATITUDE = 40°47'22.39" (40.789553)
	LONGITUDE = 103°50'02.84" (103.834122)
NAD 27 (TARGET BOTTOM HOLE)	LATITUDE = 40°47'22.44" (40.789567)
	LONGITUDE = 103°50'01.03" (103.833619)