



Viewing Southeast: well location with un-reclaimed drill cuttings pit & TA wellhead, (left in photo)



Viewing South: contents of pit & liner condition, which is dilapidated and sagging. Fencing in disrepair.

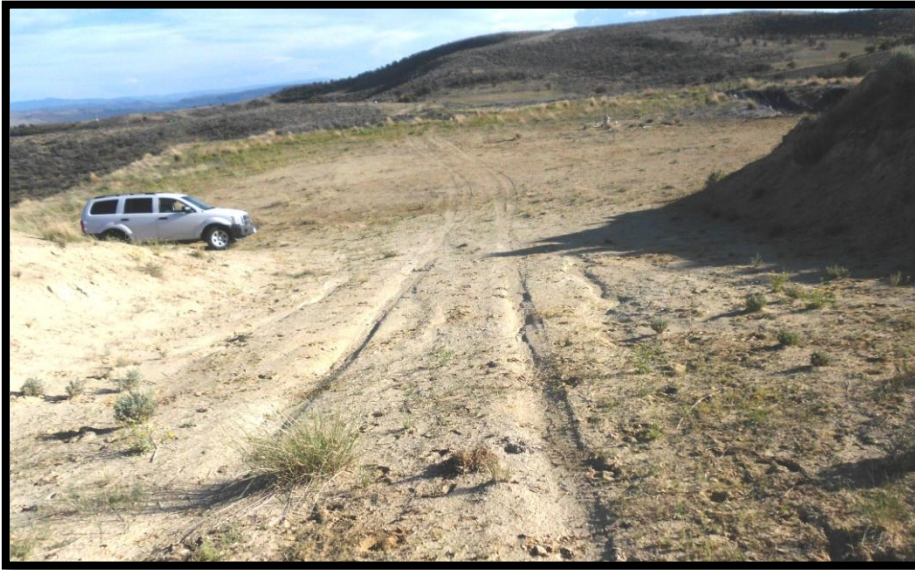


Temporarily abandoned wellhead, cellar & rathole.



Viewing west: well pad location, general vegetation type & density, & excavated spoils pile bermed to the north & northwest





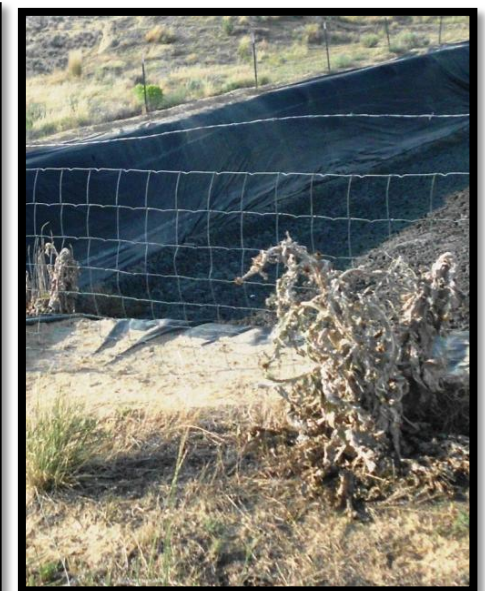
Southern view of location, (spoils pile to the right.)



Viewing northerly, eastern portion of location



Viewing south along the eastern perimeter berm: localized erosion channels: even though they are well vegetated & appear stable.



Class B Noxious weeds: Upper left: Spotted Knapweed, right: bull thistle.





COGS GIS Online 2009 Aerial photo. Well pad, drill pit and access road.



Google Maps Aerial Photo Date August 2011: well pad location & drill pit.