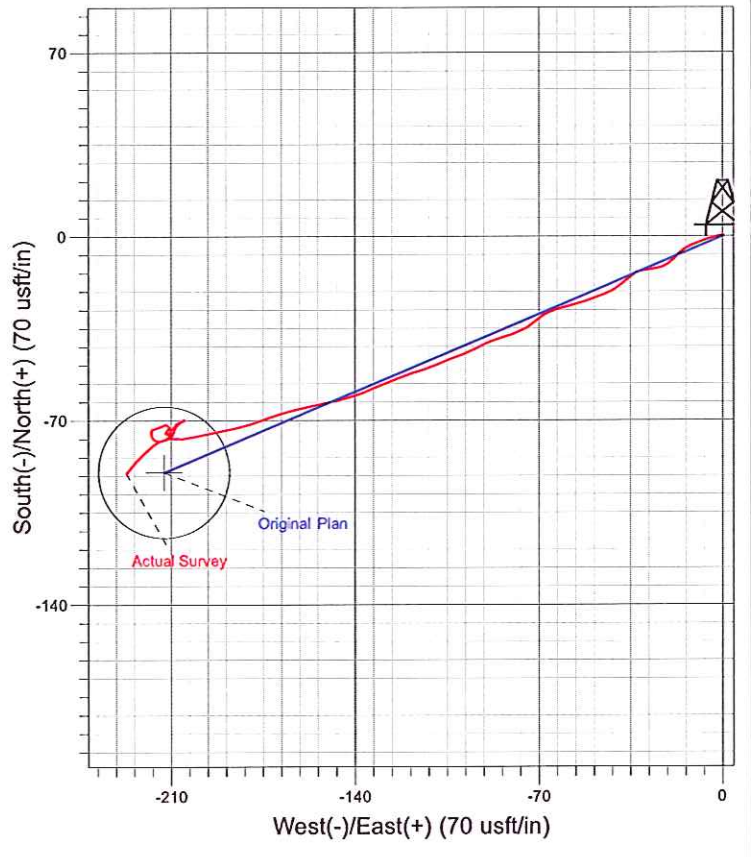
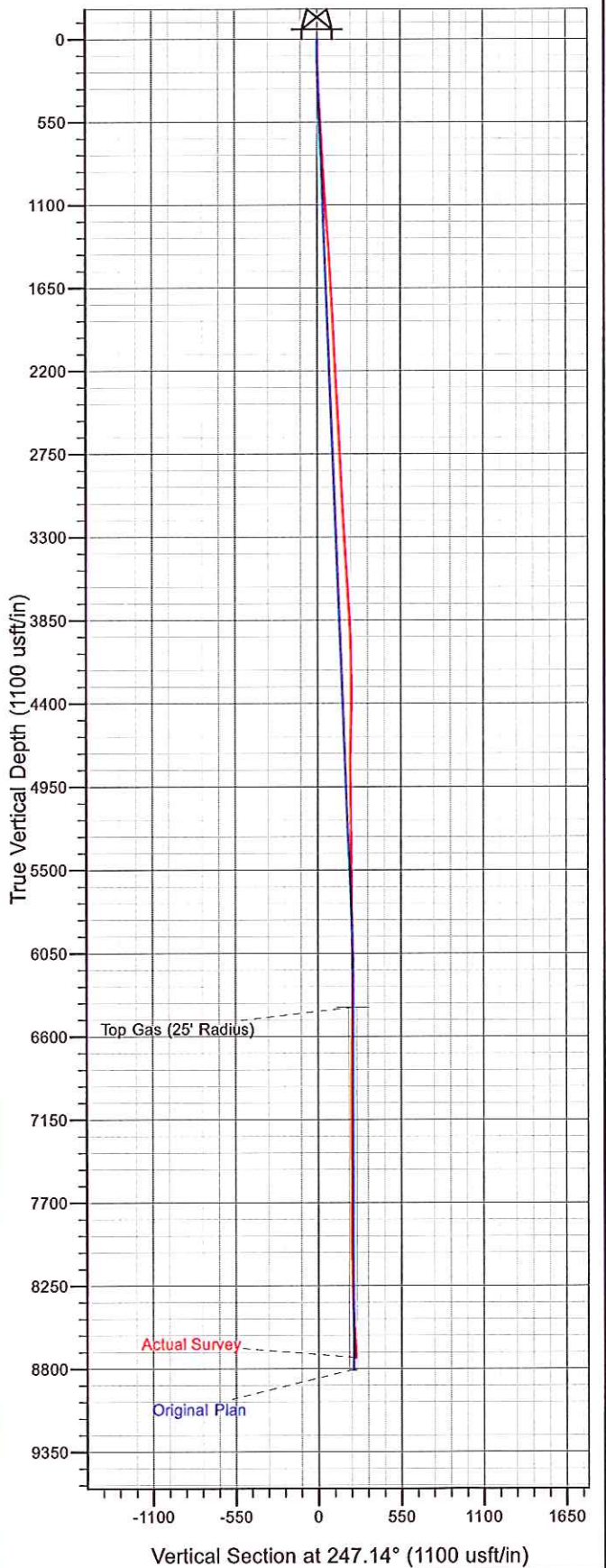




Well Name: RWF 32-36  
 Surface Location: RWF 32-36 Pad  
 North American Datum 1983 , US State Plane 1983. Colorado Central Zone  
 Ground Elevation: 6424.00  
 +N/-S    +E/-W    Northing    Easting    Latitude    Longitude    Slot  
 0.00    0.00    1610152.70    2340881.70    39.48538    -107.83554    B1  
 KELLY BUSHING @ 6450.00usft (Nabors 576 (26' RKB) jjb)



Azimuths to True North  
 Magnetic North: 10.23°

Magnetic Field  
 Strength: 52222.3snT  
 Dip Angle: 65.75°  
 Date: 11/4/2011  
 Model: IGRF2010