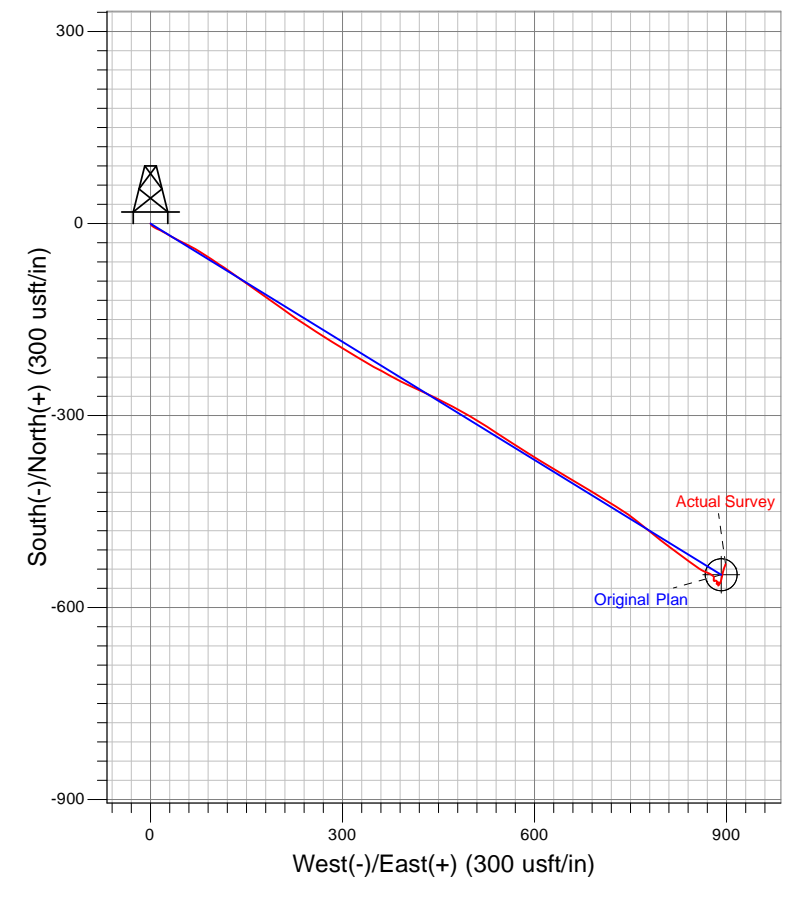
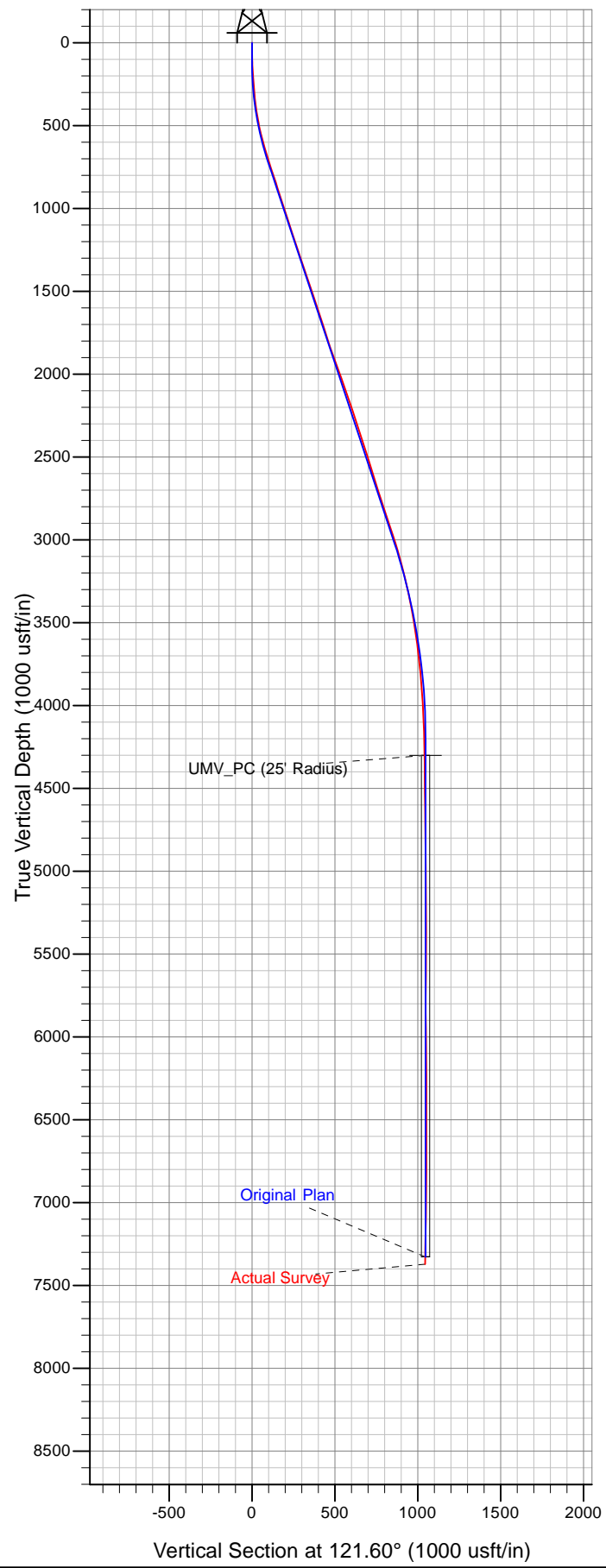


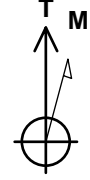


Well Name: KP 331-17
 Surface Location: KP 24-8 Pad
 North American Datum 1983 , US State Plane 1983 . Colorado Central Zone
 Ground Elevation: 6526.00

+N/-S	+E/-W	Northing	Easting	Latitude	Longitude	Slot
0.00	0.00	1626653.80	2413496.70	39.53552	-107.57967	B4

KELLY BUSHING @ 6552.00usft (Nabors 574 (26' RKB) kjs)





Azimuths to True North
 Magnetic North: 10.09°

Magnetic Field
 Strength: 52261.3snT
 Dip Angle: 65.83°
 Date: 1/17/2012
 Model: IGRF2010