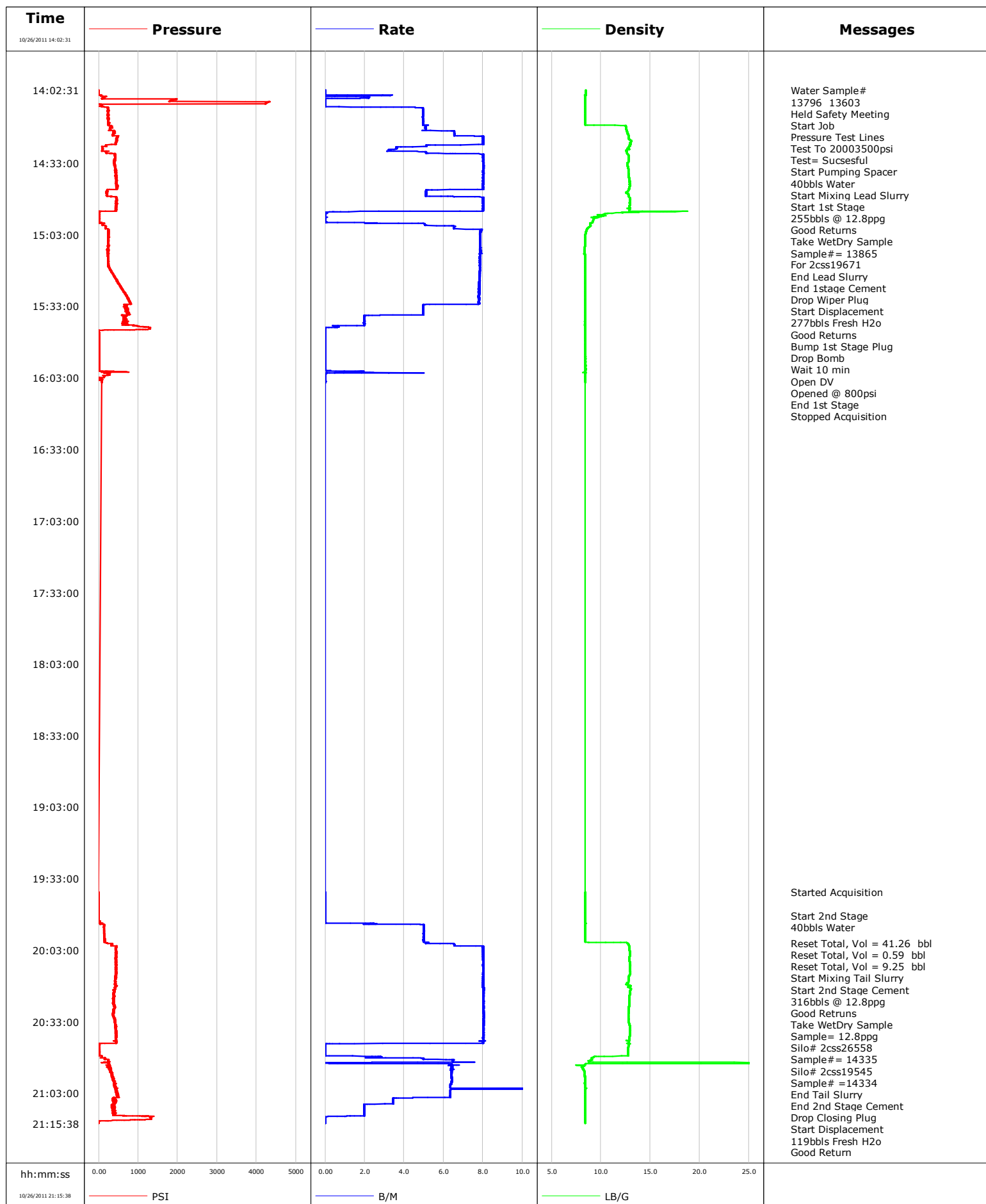


Well RGU 432-1-298
Field RYAN GULCH
Engineer
Country United States

Client WILLIAMS
SIR No. BUNM-00255
Job Type SURFACE
Job Date 10-26-2011

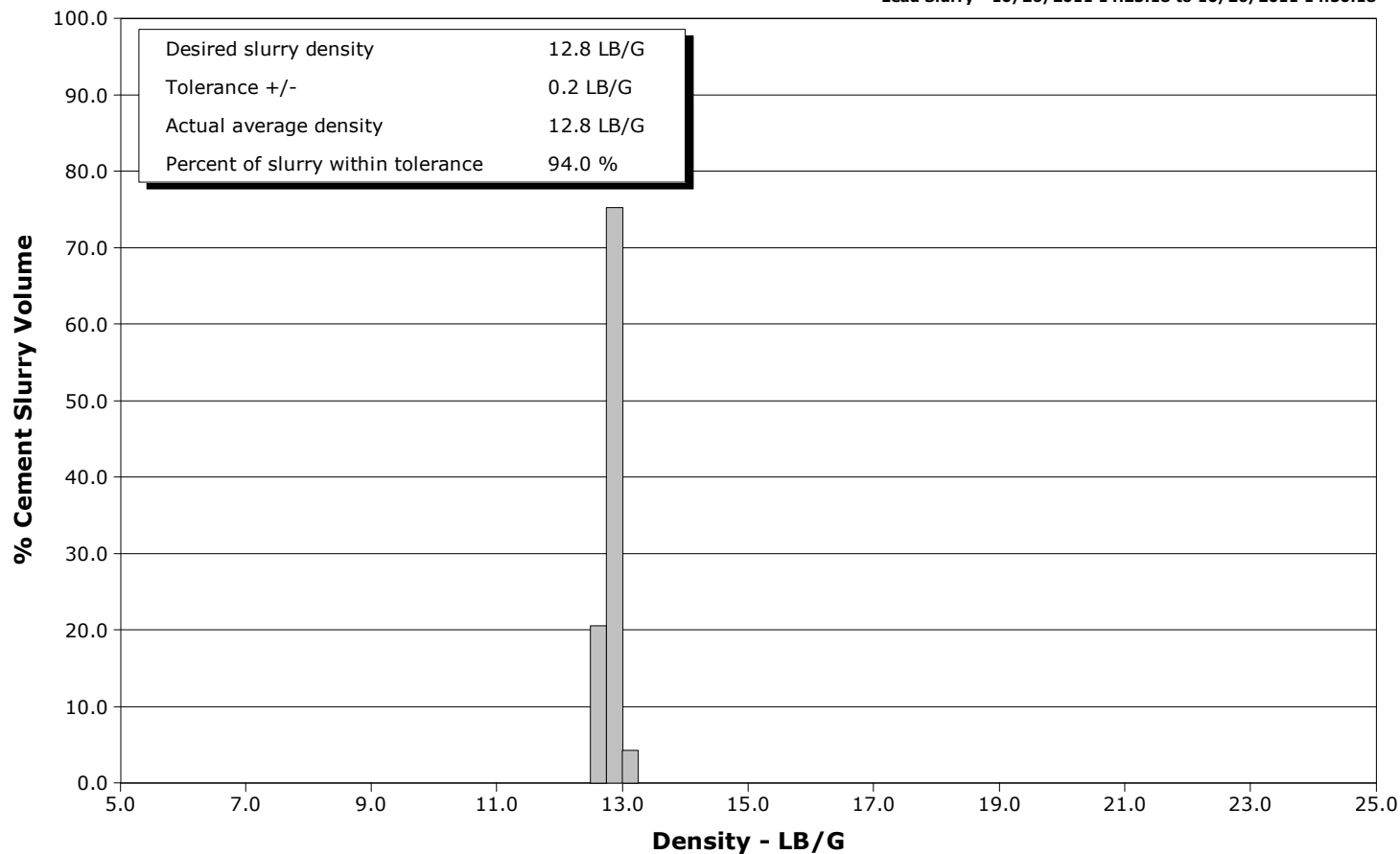


Schlumberger Cementing Qa/Qc Density Report

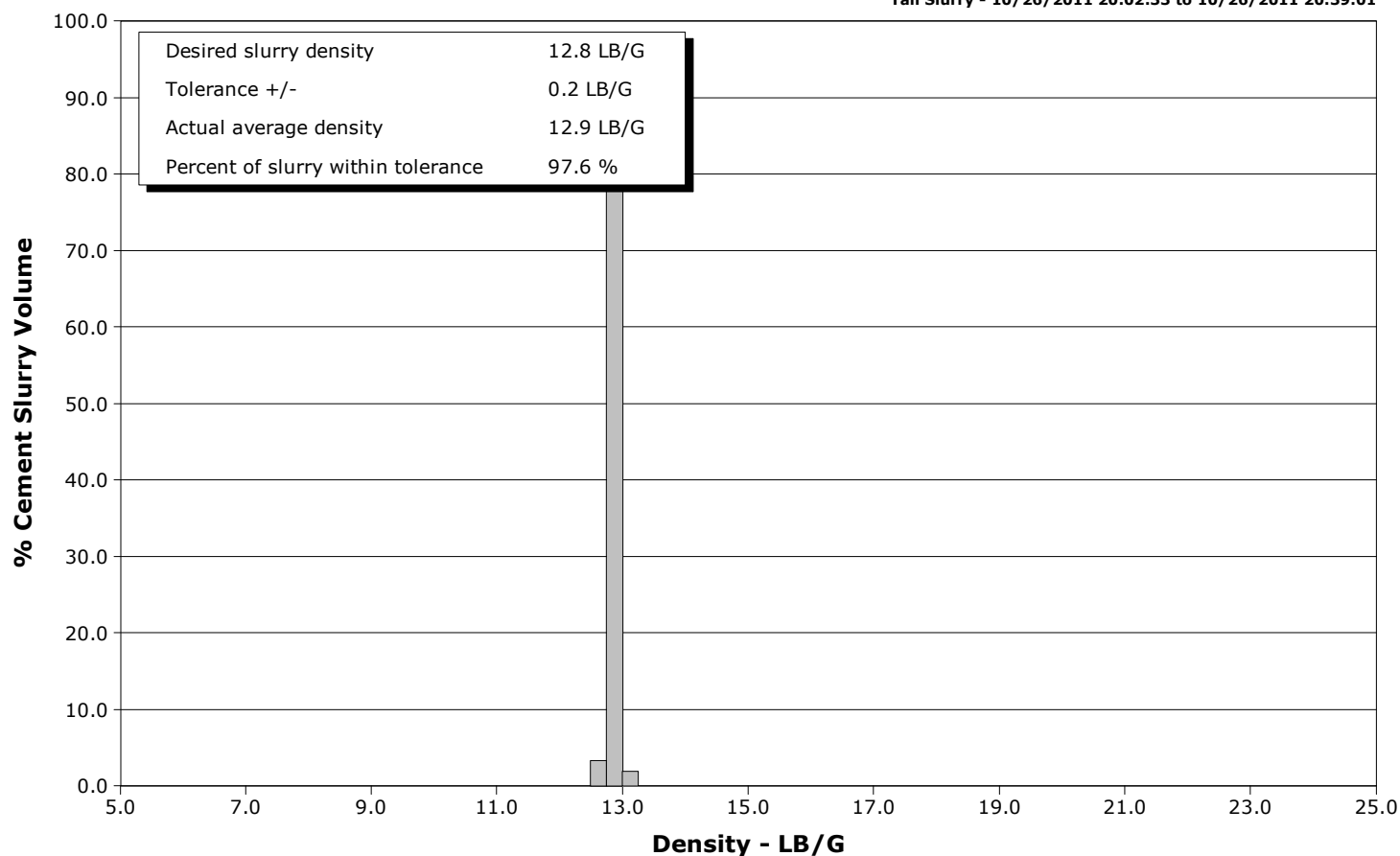
Well RGU 432-1-298
Field RYAN GULCH
Engineer
Country United States

Client WILLIAMS
SIR No. BUNM-00255
Job Type SURFACE
Job Date 10-26-2011

Lead Slurry - 10/26/2011 14:23:18 to 10/26/2011 14:50:18



Tail Slurry - 10/26/2011 20:02:33 to 10/26/2011 20:39:01





Cementing Service Report

				Customer WILLIAMS			Job Number BUNM-00255								
Well RGU 432-1-298			Location (legal) N PIEANCE			Schlumberger Location FCO			Job Start Oct/26/2011						
Field RYAN GULCH		Formation Name/Type			Deviation		Bit Size		Well MD		Well TVD				
County GARFIELD		State/Province Colorado			BHP		BHST		BHCT		Pore Press. Gradient				
Well Master 061318496		API/UWI													
Rig Name CYCLONE 29		Drilled For Gas		Service Via Land		Casing/Liner									
						Depth,		Size,		Weight,		Grade		Thread	
Offshore Zone		Well Class New		Well Type Development											
Drilling Fluid Type		Max. Density		Plastic Viscosity		Tubing/Drill Pipe									
						Depth,		Size,		Weight,		Grade		Thread	
Service Line Cementing		Job Type SURFACE													
Max. Allowed Tub. Press		Max. Allowed Ann. Press		WH Connection		Perforations/Open Hole									
						Top,		Bottom,				No. of Shots		Total Interval	
														Diameter	
						Treat Down Casing		Displacement 277.0 bbl		Packer Type		Packer Depth			
						Tubing Vol.		Casing Vol. 279.0 bbl		Annular Vol. 250.0 bbl		Openhole Vol. 597.0 bbl			
Casing/Tubing Secured <input type="checkbox"/>		1 Hole Vol. Circulated prior to Cement <input type="checkbox"/>		Casing Tools				Squeeze Job							
Lift Pressure 1784 psi		Shoe Type Guide				Squeeze Type									
Pipe Rotated <input type="checkbox"/>		Pipe Reciprocated <input type="checkbox"/>		Shoe Depth 3605.0 ft				Tool Type							
No. Centralizers		Top Plugs		Bottom Plugs		Stage Tool Type				Tool Depth					
Cement Head Type Single		Stage Tool Depth				Tail Pipe Size									
Job Scheduled For Oct/26/2011		Arrived on Location Oct/26/2011		Leave Location Oct/26/2011		Collar Type Diff-Fill				Tail Pipe Depth					
						Collar Depth 3581.0 ft				Sqz. Total Vol.					
Date	Time 24-hr clock	Treating Pressure PSI	Flow Rate B/M	Density LB/G	Volume BBL	Message									
10/26/2011	11:24:06					Started Acquisition									
10/26/2011	14:02:31	-0	0.0	8.44	0.0										
10/26/2011	14:02:32					Water Sample#									
10/26/2011	14:02:32					13796 13603									
10/26/2011	14:02:32					Held Safety Meeting									
10/26/2011	14:02:32	-0	0.0	8.44	0.0										
10/26/2011	14:02:33					Start Job									
10/26/2011	14:02:33	-0	0.0	8.44	0.0										
10/26/2011	14:02:36					Pressure Test Lines									
10/26/2011	14:02:36					Test To 20003500psi									
10/26/2011	14:02:36					Test= Sucsesful									
10/26/2011	14:02:36	-1	0.0	8.44	0.0										
10/26/2011	14:04:06	-3	0.0	8.44	0.0										
10/26/2011	14:06:06	80	0.1	8.42	2.2										
10/26/2011	14:08:06	4233	0.0	8.43	2.2										
10/26/2011	14:09:40					Start Pumping Spacer									
10/26/2011	14:09:40	211	1.9	8.43	2.3										
10/26/2011	14:09:42					40bbbs Water									
10/26/2011	14:09:42	207	2.8	8.43	2.3										
10/26/2011	14:10:06	243	4.9	8.42	4.1										
10/26/2011	14:12:06	234	4.9	8.42	14.0										

Well			Field		Job Start	Customer		Job Number
RGU 432-1-298			RYAN GULCH		Oct/26/2011	WILLIAMS		BUNM-00255
Date	Time 24-hr clock	Treating Pressure PSI	Flow Rate B/M	Density LB/G	Volume BBL	Message		
10/26/2011	14:16:06	245	4.9	8.42	33.8			
10/26/2011	14:18:06	292	5.1	12.52	43.8			
10/26/2011	14:20:06	370	6.5	12.65	54.8			
10/26/2011	14:22:06	473	8.0	12.80	68.3			
10/26/2011	14:23:18					Start Mixing Lead Slurry		
10/26/2011	14:23:18	462	8.0	12.89	77.9			
10/26/2011	14:23:19					Start 1st Stage		
10/26/2011	14:23:19					255bbls @ 12.8ppg		
10/26/2011	14:23:19					Good Returns		
10/26/2011	14:23:19	452	8.0	12.89	78.0			
10/26/2011	14:23:20					Take WetDry Sample		
10/26/2011	14:23:20					Sample#= 13865		
10/26/2011	14:23:20					For 2css19671		
10/26/2011	14:23:20	449	8.0	12.89	78.2			
10/26/2011	14:24:06	452	8.0	13.08	84.3			
10/26/2011	14:26:06	192	5.1	12.90	98.5			
10/26/2011	14:28:06	83	3.2	12.57	105.8			
10/26/2011	14:30:06	418	8.0	12.80	118.4			
10/26/2011	14:32:06	416	8.0	12.80	134.4			
10/26/2011	14:34:06	396	8.0	12.67	150.4			
10/26/2011	14:36:06	439	8.0	12.77	166.4			
10/26/2011	14:38:06	428	8.0	12.77	182.4			
10/26/2011	14:40:06	442	8.0	12.86	198.4			
10/26/2011	14:42:06	430	8.0	12.87	214.4			
10/26/2011	14:44:06	447	8.0	12.78	230.4			
10/26/2011	14:46:06	211	5.1	12.73	241.2			
10/26/2011	14:48:06	460	8.0	12.93	254.0			
10/26/2011	14:50:06	428	8.0	12.90	270.0			
10/26/2011	14:50:18					End Lead Slurry		
10/26/2011	14:50:18	429	8.0	12.90	271.6			
10/26/2011	14:50:20					End 1stage Cement		
10/26/2011	14:50:20	441	8.0	12.90	271.9			
10/26/2011	14:50:33					Drop Wiper Plug		
10/26/2011	14:50:33	450	8.0	12.90	273.6			
10/26/2011	14:52:06	433	8.0	12.69	286.0			
10/26/2011	14:54:06	3	0.1	11.21	296.6			
10/26/2011	14:56:06	7	0.0	9.64	296.6			
10/26/2011	14:58:06	73	1.5	9.03	296.6			
10/26/2011	15:00:06	170	6.5	8.73	307.0			
10/26/2011	15:00:19					Start Displacement		
10/26/2011	15:00:19	167	6.5	8.67	308.4			
10/26/2011	15:00:20					277bbls Fresh H2o		
10/26/2011	15:00:20					Good Returns		
10/26/2011	15:00:20	171	6.5	8.67	308.5			
10/26/2011	15:02:06	236	7.9	8.47	321.9			
10/26/2011	15:04:06	229	7.8	8.42	337.6			
10/26/2011	15:06:06	235	7.9	8.41	353.3			
10/26/2011	15:08:06	221	7.8	8.38	369.0			
10/26/2011	15:10:06	252	7.9	8.36	384.7			
10/26/2011	15:12:06	229	7.9	8.42	400.4			
10/26/2011	15:14:06	233	7.8	8.42	416.1			
10/26/2011	15:16:06	251	7.8	8.42	431.7			
10/26/2011	15:18:06	307	7.8	8.42	447.4			
10/26/2011	15:20:06	373	7.8	8.42	463.0			

Well			Field		Job Start	Customer	Job Number
RGU 432-1-298			RYAN GULCH		Oct/26/2011	WILLIAMS	BUNM-00255
Date	Time 24-hr clock	Treating Pressure PSI	Flow Rate B/M	Density LB/G	Volume BBL	Message	
10/26/2011	15:24:06	524	7.8	8.42	494.3		
10/26/2011	15:26:06	589	7.8	8.42	509.8		
10/26/2011	15:28:06	669	7.8	8.42	525.4		
10/26/2011	15:30:06	763	7.8	8.42	541.0		
10/26/2011	15:32:06	814	7.8	8.42	556.6		
10/26/2011	15:34:06	732	5.0	8.42	567.2		
10/26/2011	15:36:06	705	5.0	8.42	577.1		
10/26/2011	15:38:06	637	2.0	8.40	583.4		
10/26/2011	15:40:06	631	2.0	8.39	587.3		
10/26/2011	15:42:06	1287	0.2	8.43	590.1		
10/26/2011	15:42:10					Bump 1st Stage Plug	
10/26/2011	15:42:10	1299	0.0	8.42	590.1		
10/26/2011	15:44:06	0	0.0	8.43	590.1		
10/26/2011	15:46:06	1	0.0	8.43	590.1		
10/26/2011	15:48:06	2	0.0	8.43	590.1		
10/26/2011	15:49:53					Drop Bomb	
10/26/2011	15:49:53					Wait 10 min	
10/26/2011	15:49:53	2	0.0	8.43	590.1		
10/26/2011	15:50:06	2	0.0	8.43	590.1		
10/26/2011	15:52:06	2	0.0	8.43	590.1		
10/26/2011	15:54:06	2	0.0	8.43	590.1		
10/26/2011	15:56:06	1	0.0	8.43	590.1		
10/26/2011	15:58:06	1	0.0	8.43	590.1		
10/26/2011	16:00:06	7	0.2	8.43	590.1		
10/26/2011	16:02:06	173	0.0	8.42	591.4		
10/26/2011	16:04:06	-9	0.0	8.42	591.4		
10/26/2011	16:04:39					Open DV	
10/26/2011	16:04:39	82	0.0	8.42	591.4		
10/26/2011	16:04:40					Opened @ 800psi	
10/26/2011	16:04:40	82	0.1	8.41	591.4		
10/26/2011	16:04:56					End 1st Stage	
10/26/2011	16:04:56	83	0.0	8.43	591.4		
10/26/2011	16:05:08					Stopped Acquisition	
10/26/2011	16:05:08	84	0.0	8.43	591.4		
10/26/2011	19:38:37					Started Acquisition	
10/26/2011	19:38:37	-0	0.0	8.43	591.4		
10/26/2011	19:40:06	-1	0.0	8.43	591.4		
10/26/2011	19:42:06	-0	0.0	8.43	591.4		
10/26/2011	19:44:06	-1	0.0	8.43	591.4		
10/26/2011	19:46:06	-1	0.0	8.43	591.4		
10/26/2011	19:48:06	-0	0.0	8.43	591.4		
10/26/2011	19:48:33					Start 2nd Stage	
10/26/2011	19:48:33	-0	0.0	8.43	591.4		
10/26/2011	19:48:59					40bbls Water	
10/26/2011	19:48:59	-1	0.0	8.43	591.4		
10/26/2011	19:50:06	-1	0.0	8.43	591.4		
10/26/2011	19:52:06	47	1.9	8.41	592.4		
10/26/2011	19:54:06	130	5.0	8.42	602.2		
10/26/2011	19:56:06	130	5.0	8.42	612.2		
10/26/2011	19:58:06	149	5.0	8.42	622.2		
10/26/2011	19:59:56					Reset Total, Vol = 41.26 bbl	
10/26/2011	19:59:56	192	5.1	12.65	631.4		
10/26/2011	20:00:03					Reset Total, Vol = 0.59 bbl	
10/26/2011	20:00:03	213	5.1	12.65	632.0		

Well			Field		Job Start	Customer	Job Number
RGU 432-1-298			RYAN GULCH		Oct/26/2011	WILLIAMS	BUNM-00255
Date	Time 24-hr clock	Treating Pressure PSI	Flow Rate B/M	Density LB/G	Volume BBL	Message	
10/26/2011	20:01:27					Reset Total, Vol = 9.25 bbl	
10/26/2011	20:01:27	448	8.0	12.86	641.2		
10/26/2011	20:02:06	445	8.0	12.88	646.4		
10/26/2011	20:02:33					Start Mixing Tail Slurry	
10/26/2011	20:02:33					Start 2nd Stage Cement	
10/26/2011	20:02:33					316bbls @ 12.8ppg	
10/26/2011	20:02:33	429	8.0	12.85	650.0		
10/26/2011	20:02:34					Good Retruns	
10/26/2011	20:02:34					Take WetDry Sample	
10/26/2011	20:02:34					Sample= 12.8ppg	
10/26/2011	20:02:34					Silo# 2css26558	
10/26/2011	20:02:34					Sample#= 14335	
10/26/2011	20:02:34					Silo# 2css19545	
10/26/2011	20:02:34	423	8.0	12.85	650.1		
10/26/2011	20:04:06	450	8.0	12.92	662.4		
10/26/2011	20:04:54					Sample# =14334	
10/26/2011	20:04:54	445	8.0	12.93	668.8		
10/26/2011	20:06:06	424	8.0	12.88	678.4		
10/26/2011	20:08:06	424	8.0	12.90	694.4		
10/26/2011	20:10:06	434	8.0	12.94	710.4		
10/26/2011	20:12:06	442	8.0	12.95	726.4		
10/26/2011	20:14:06	429	8.0	12.82	742.4		
10/26/2011	20:16:06	423	8.0	12.76	758.4		
10/26/2011	20:18:06	453	8.0	12.94	774.4		
10/26/2011	20:20:06	379	8.0	12.96	790.4		
10/26/2011	20:22:06	379	8.0	12.86	806.4		
10/26/2011	20:24:06	381	8.0	12.87	822.5		
10/26/2011	20:26:06	392	8.0	12.85	838.5		
10/26/2011	20:28:06	375	8.0	12.82	854.5		
10/26/2011	20:30:06	358	8.0	12.79	870.6		
10/26/2011	20:32:06	395	8.0	12.79	886.6		
10/26/2011	20:34:06	420	8.0	12.85	902.7		
10/26/2011	20:36:06	439	8.0	12.91	918.7		
10/26/2011	20:38:06	435	8.0	12.90	934.7		
10/26/2011	20:39:01					End Tail Slurry	
10/26/2011	20:39:01	447	8.0	12.90	942.1		
10/26/2011	20:39:02					End 2nd Stage Cement	
10/26/2011	20:39:02	455	8.0	12.90	942.2		
10/26/2011	20:39:21					Drop Closing Plug	
10/26/2011	20:39:21	444	8.0	12.87	944.8		
10/26/2011	20:40:06	436	8.0	12.85	950.8		
10/26/2011	20:42:06	77	5.3	12.74	966.7		
10/26/2011	20:44:06	9	0.0	12.74	966.9		
10/26/2011	20:46:06	13	0.0	12.73	966.9		
10/26/2011	20:48:06	148	2.0	9.18	968.8		
10/26/2011	20:48:47					Start Displacement	
10/26/2011	20:48:47					119bbls Fresh H2o	
10/26/2011	20:48:47	145	5.0	9.05	972.0		
10/26/2011	20:50:06	87	0.0	25.00	980.1		
10/26/2011	20:52:06	281	6.4	8.10	990.1		
10/26/2011	20:53:13					Good Return	
10/26/2011	20:53:13					100bbls cement	
10/26/2011	20:53:13					To Surface	
10/26/2011	20:53:13	282	6.4	8.26	997.2		

Well			Field		Job Start	Customer		Job Number
RGU 432-1-298			RYAN GULCH		Oct/26/2011	WILLIAMS		BUNM-00255
Date	Time 24-hr clock	Treating Pressure PSI	Flow Rate B/M	Density LB/G	Volume BBL	Message		
10/26/2011	20:56:06	360	6.4	8.38	1015.7			
10/26/2011	20:58:06	389	6.4	8.39	1028.5			
10/26/2011	21:00:06	407	6.3	8.42	1041.2			
10/26/2011	21:02:06	439	6.3	8.42	1057.0			
10/26/2011	21:04:06	484	6.3	8.42	1069.7			
10/26/2011	21:06:06	393	3.4	8.42	1078.8			
10/26/2011	21:08:06	365	2.0	8.42	1084.8			
10/26/2011	21:10:06	334	2.0	8.42	1088.8			
10/26/2011	21:12:06	386	2.0	8.42	1092.7			
10/26/2011	21:13:12					Bump Closing Plug		
10/26/2011	21:13:12	1310	0.0	8.43	1093.8			
10/26/2011	21:14:06	1041	0.0	8.43	1093.8			
10/26/2011	21:15:31					End Job		
10/26/2011	21:15:31	-1	0.0	8.43	1093.8			

Post Job Summary

Average Pump Rates, bbl/min					Volume of Fluid Injected, bbl				
Slurry 6.5	N2	Mud 0.0	Maximum Rate 20.4		Total Slurry 1093.8	Mud 0.0	Spacer 77.8	N2	
Treating Pressure Summary, psi					Breakdown Fluid				
Maximum 4330	Final -0	Average 360	Bump Plug to 1300	Breakdown	Type		Volume		Density
Avg. N2 Percent		Designed Slurry Volume 571.0 bbl		Displacement 785.4 bbl	Mix Water Temp 56 degF	Cement Circulated to Surface? <input checked="" type="checkbox"/>		Volume 100.0 bbl	
						Washed Thru Perfs <input type="checkbox"/>		To	
Customer or Authorized Representative ANDREW BRUNK				Schlumberger Supervisor JASON CRICK/CHUCK ROGERS			Circulation Lost <input type="checkbox"/>		Job Completed <input checked="" type="checkbox"/>
						-		-	



Service Order #:	
Date:	Oct/26/2011
Operating Time:	0.0
Client Rep:	WILLIAMS
Schlumberger Engineer:	JASON CRICK/CHUCK ROGERS
Schlumberger FSM:	

To be completed by Company Rep. Please answer Y (Yes) or N (No) and add any comments below.

4	Evaluation					
4a	Main job objective achieved with no consequential non-productive time	10	yes <input type="checkbox"/>	no <input checked="" type="checkbox"/>	0	
					Sub-total	0%

Comments: (Please include a brief explanation for a "NO" response and summarize any innovations attempted on this well.)

Client:	Schlumberger:
Client Signature:	Schlumberger Signature: