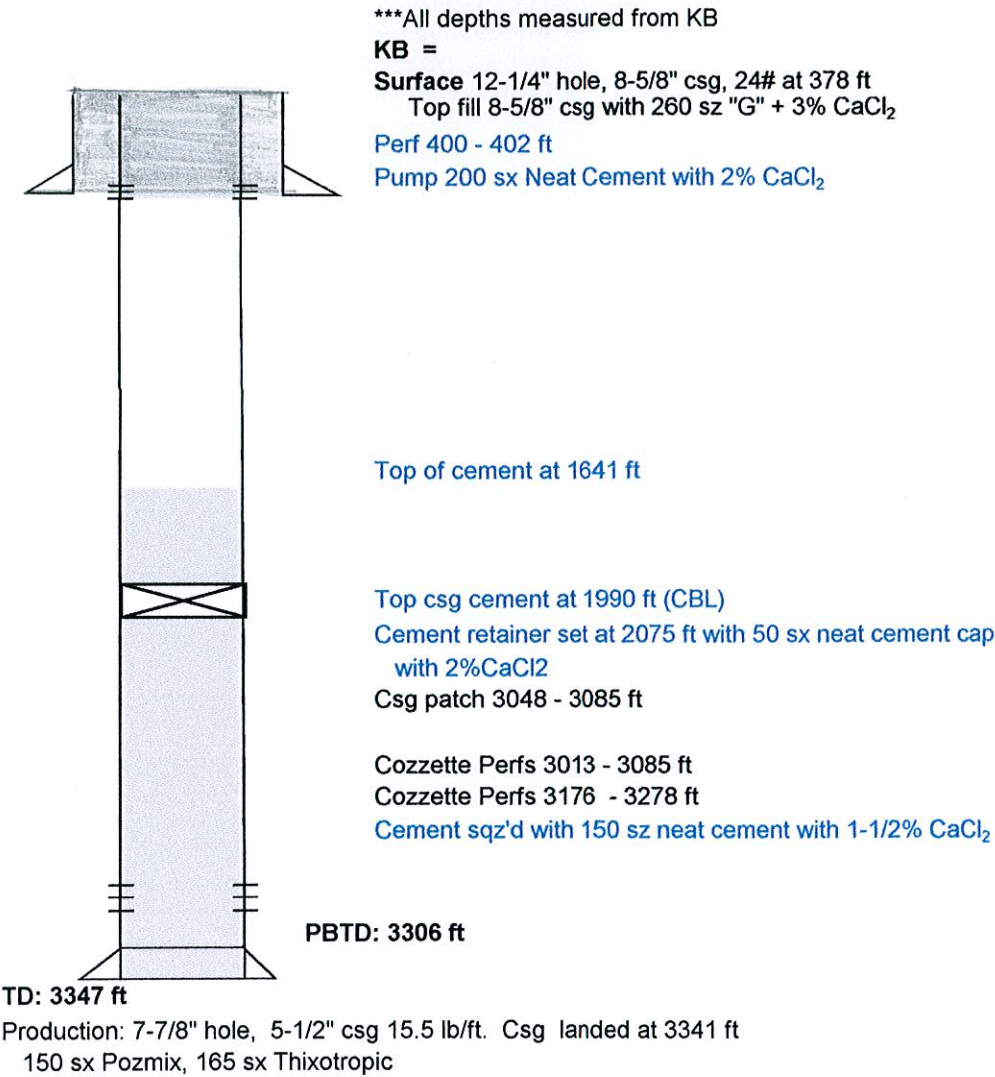
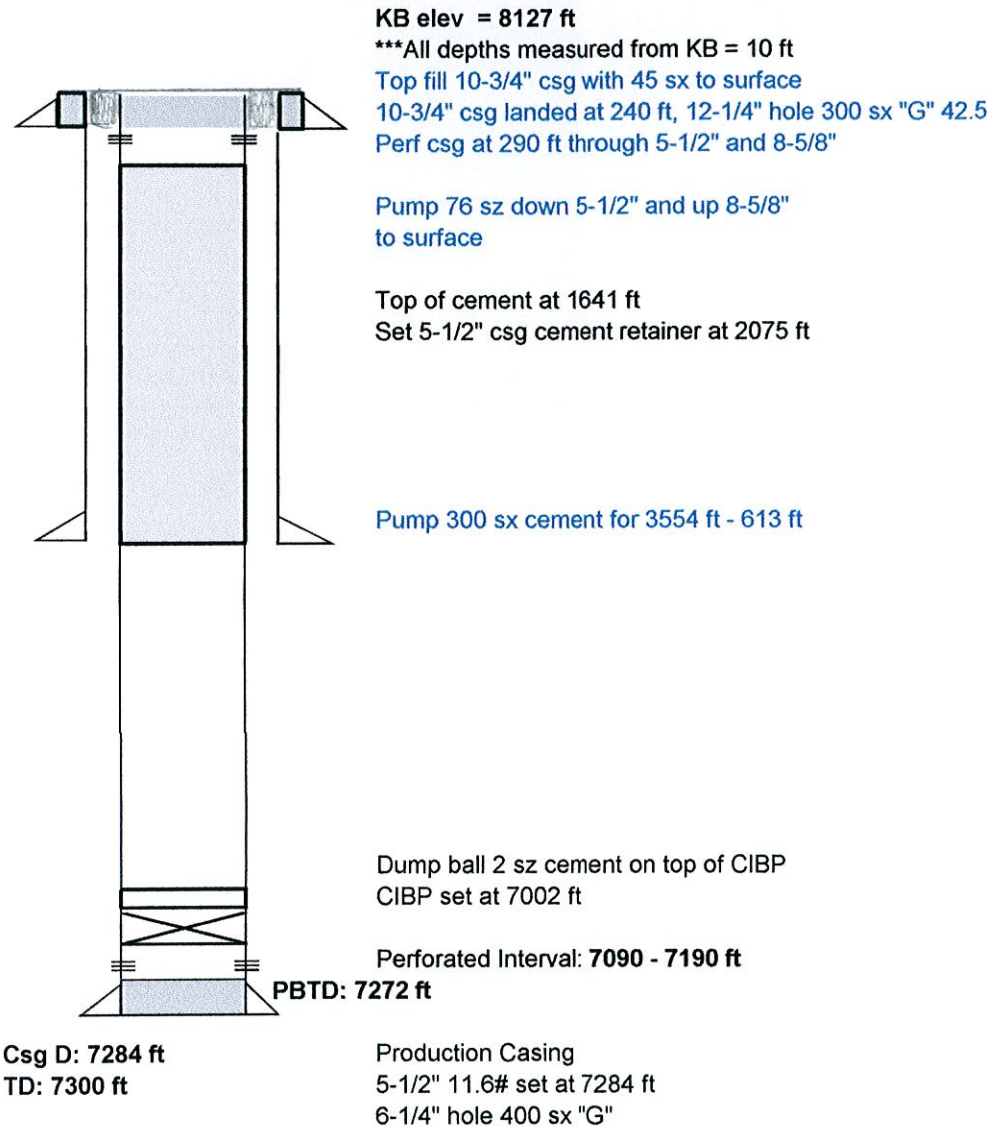


Cooper #15-3 Wellbore Diagram 08/10/2012
API#: 05-077-08542 Surface Location: NENW Sec 15-T10S-R96W
County: Mesa Field Name: Plateau
Plugged & Abandoned: 11/18/99 Maralex Resources, Inc.
**Directional Well

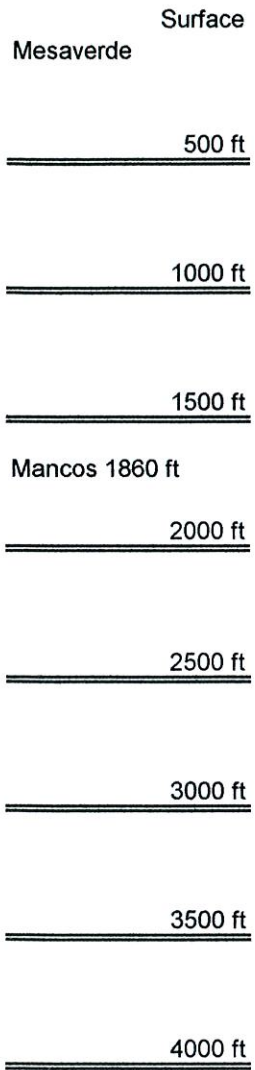


*Trail Canyon #3-4 Wellbore Diagram 08/10/2012
API#: 05-103-08204 Surface Location: NESW Sec 3-T4S-R101W
County: Rio Blanco Field Name: Trail Canyon
Plugged & Abandoned: 07/9/2010 Maralex Resources, Inc.
**Directional Well



*Name changed 11/28/1979, #2-3-C to #3-4

*Trail Canyon #12-2X Wellbore Diagram 08/10/2012
API#: 05-103-07987 Surface Location: NWN Sec 12-T4S-R101W
County: Rio Blanco Field Name: Trail Canyon
Plugged & Abandoned: 06/21/2010 Maralex Resources, Inc.
**Directional Well



***All depths measured from KB
KB =
Surface 12-1/4" hole, 8-5/8" csg, 24# at 422 ft
Top fill 8-5/8" csg with 350 sx to surface
Perforated ar 472 ft thru 4-1/2 csg
Pump 206 xs down 4-1/2 ft csg and up to 8-5/8 ft csg to surface

1st 6-3/4" hole, 4-1/2" csg, 10.5# at 3595 ft
4-1/2" csg with 200 sx
Bad csg 772 - 1825 ft

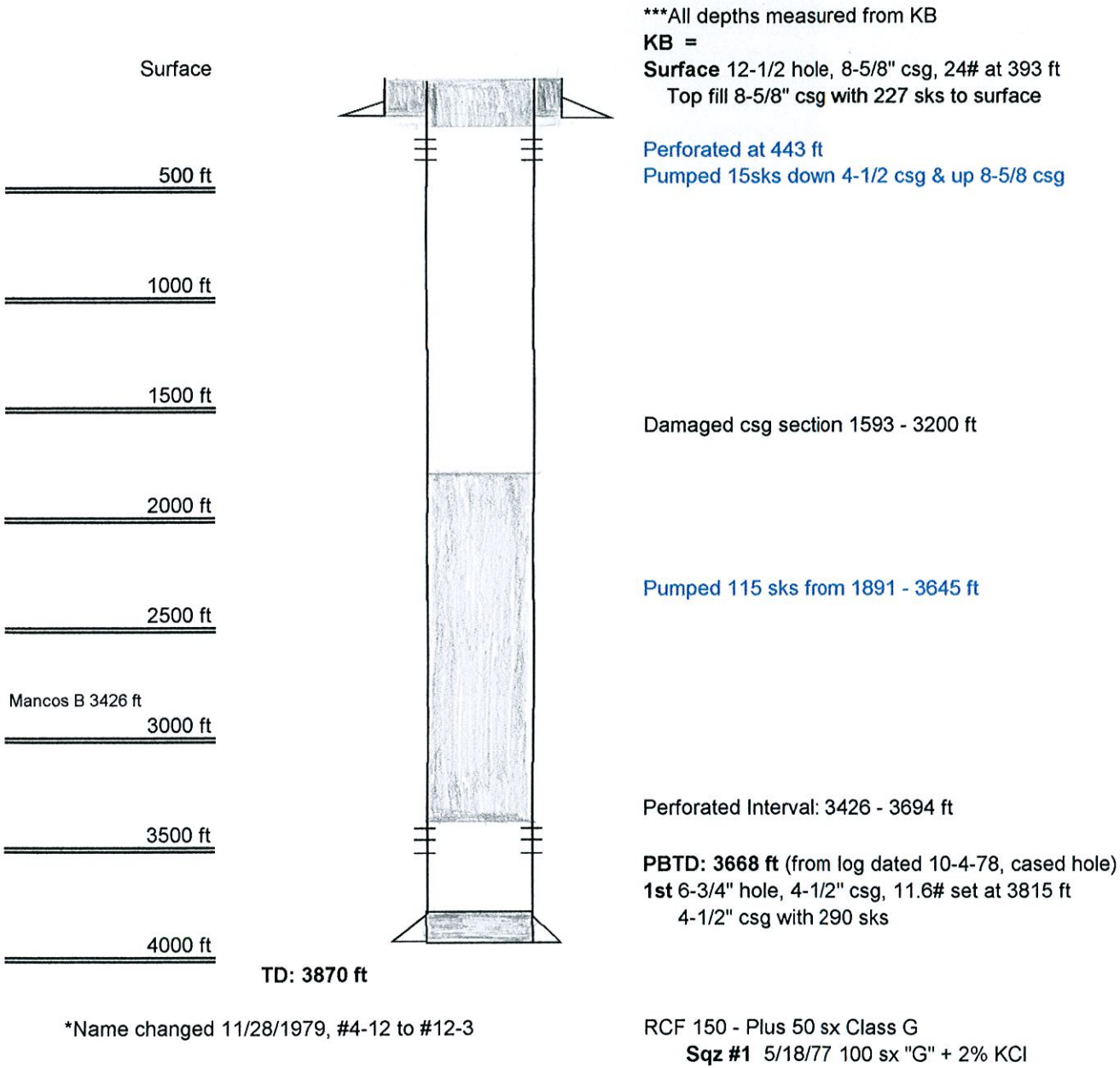
Pump 185 sx down 4-1/2 ft csg from 1837 - 700 ft

Dump bail 2 zs cement on top of CIBP
CIBP set at 3212 ft
Perforated Interval: 3296 - 3378 ft
Perforated Interval: 3520 -3544 ft

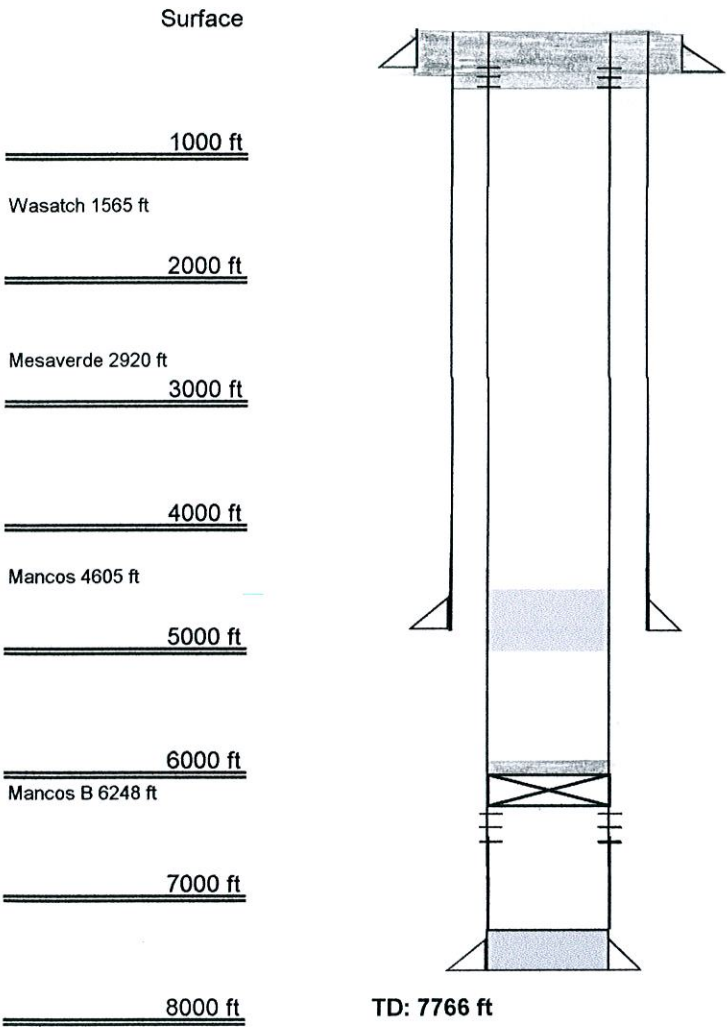
PBTD: 3575 ft

*Name changed 11/28/1979, #12-3X to #12-2X

*Trail Canyon #12-3 Wellbore Diagram 08/10/2012
API#: 05-103-07988 Surface Location: NWSE Sec 12-T4S-R101W
County: Rio Blanco Field Name: Trail Canyon
Plugged & Abandoned: 06/16/2010 Maralex Resources, Inc.
**Directional Well



*Trail Canyon #19-3 Wellbore Diagram 08/10/2012
API#: 05-103-08053 Surface Location: SESE Sec 19-T4S-R100W
County: Rio Blanco Field Name: Trail Canyon
Plugged & Abandoned: 07/16/2010 Maralex Resources, Inc.
**Directional Well KB elev = 8980 ft



***All depths measured from KB =
Surface 14-3/4" hole, 10-3/4" csg, 32.75# at 210 ft
Top fill 10-3/4" csg with 195 sx to surface

Fill 10-3/4" and 7-5/8" csg with 84 sacks cement
Pump 184 sx cement
Perforate csg at 260 ft through 4-1/2"

1st 9-7/8" hole, 7-5/8" csg, 26.4# set at 4871 ft
7-5/8" csg with 100 sx
Pump 305 sx cement 4928 – 4480 ft

CIBP set at 6175 ft Dump bail cement
Perforated Interval: **6254' - 6608'** (354 ft)
PBTD: 6618 ft
2nd 6-3/4" hole, 4-1/2" csg, 11.6# set at 6670 ft
4-1/2" csg with 150 sx

*Name change 11/28/1979, #1-9-D to #19-3