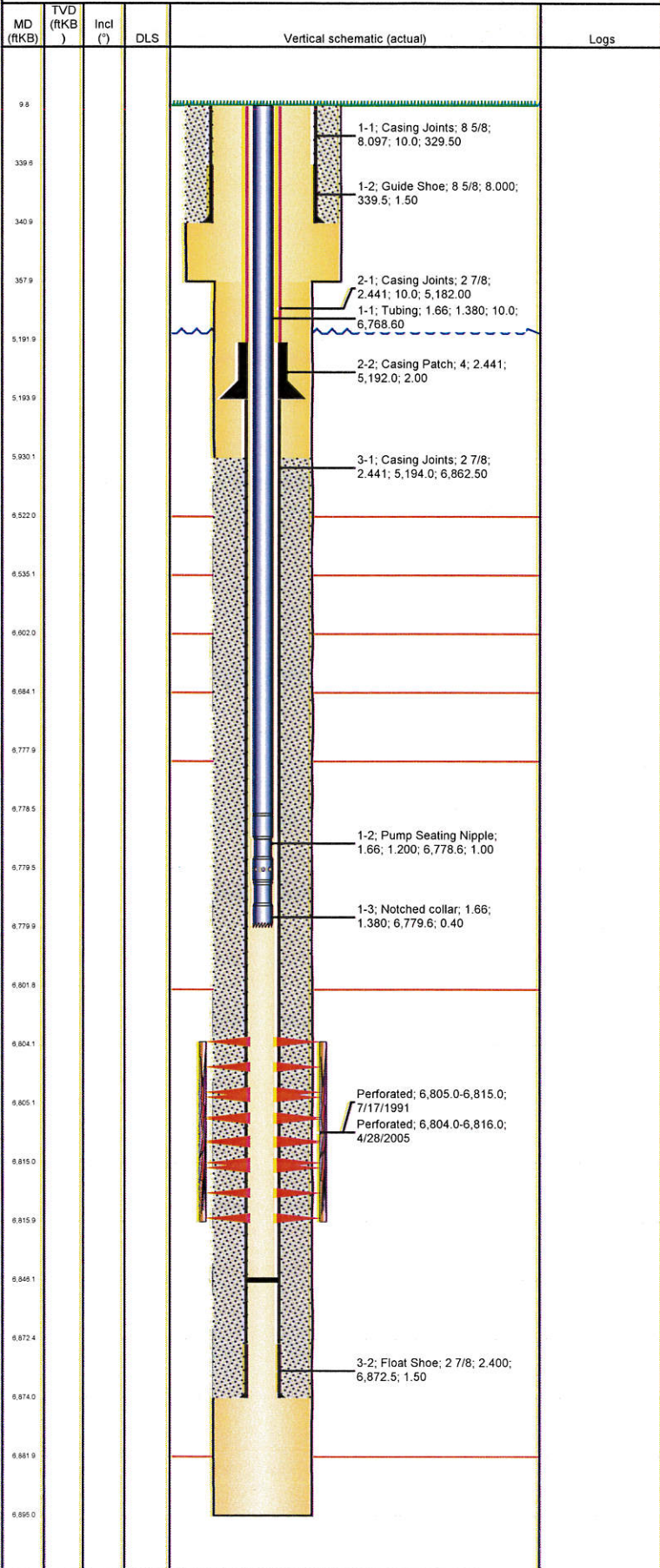


Well Name: LOUSTALET B15-14

VERTICAL - ORIGINAL HOLE, 8/10/2012 9:40:27 AM



Well Header			
API	Business Unit	District	Well Config
05-123-15013	WATTENBERG	15	VERTICAL
Original KB Elevation (ft)	KB - GL / MSL (ftKB)	Spud Date	P & A Date
4,584.00	10.00	7/6/1991	
Comment			
csg repaired 8/98			
Directions To Well			
HWY 34 & WCR 56, NE .6, N .1, W .1 INTO			
Surface Location (Congressional)			
Quarter 1	Quarter 2	Quarter 3	Quarter 4
		SE	SW
		Section	Township
		15	5 N
		Range	Rng E/W
		64	W
Bottom Hole Location			
North-South Distance (ft)		From N or S Line	East-West Distance (ft)
			From E or W Line
From E or W Line			
Plug Back Total Depths			
Date	Depth (ftKB)	Method	Com
7/11/1991	6,846.0	TAG	
Wellbore Sections			
Section Des	Size (in)	Act Top (ftKB)	Act Btm (ftKB)
SURFACE	12 1/4	10.0	358.0
PRODUCTION	7 7/8	358.0	6,895.0
Zone Statuses			
Zone Name	Status Date	Status	Job
CODELL	8/2/1991	PR	DRILLING/COMPLETION - ORIGINAL, 7/6/1991 00:00
CODELL	5/24/2005	PR	RE-FRAC, 4/26/2005 00:00
Casing Strings			
Surface, 341.0ftKB			
Casing Description	Run Date	OD (in)	W/Len (L...)
Surface	7/7/1991	8 5/8	24.00
		Grade	Top (ftKB)
		J-55	10.0
		Set Depth...	341.0
Production, 5,194.0ftKB			
Casing Description	Run Date	OD (in)	W/Len (L...)
Production	8/19/1998	2 7/8	6.50
		Grade	Top (ftKB)
		N-80	10.0
		Set Depth...	5,194.0
Production, 6,874.0ftKB			
Casing Description	Run Date	OD (in)	W/Len (L...)
Production	7/11/1991	2 7/8	6.50
		Grade	Top (ftKB)
		N-80	10.0
		Set Depth...	6,874.0
Cement			
Description	Top Depth (ftKB)	Bottom Depth (ftKB)	
SURFACE CASING CEMENT	10.0	341.0	
Description	Top Depth (ftKB)	Bottom Depth (ftKB)	
PRODUCTION CASING CEMENT	5,930.0	6,874.0	
Tubing Components			
Item Des	OD (in)	Wt (lb/ft)	Grade
Tubing	1.66	2.33	J-55
Pump Seating Nipple	1.66		
Notched collar	1.66		
		Jts	Len (ft)
		200	6,768.60
		1	1.00
		1	0.40
		Btm (ftKB)	Btm (TVD) (ftKB)
		6,778.6	
		6,779.6	
		6,780.0	
Perforation Data			
Zone	Bnch/St g	Entered Shot Total	Top (ftKB)
CODELL, ORIGINAL HOLE		48	6,804.0
CODELL, ORIGINAL HOLE		40	6,805.0
			Btm (ftKB)
			6,816.0
			6,815.0
			Date
			4/28/2005
			7/17/1991
Stimulations & Treatments			
Date	Zone	Primary Job Type	
7/17/1991	CODELL, ORIGINAL HOLE	DRILLING/COMPLETION - ORIGINAL	
Technical Result		Tech Result Details	Tech Result Note
Comment			
Date	Zone	Primary Job Type	
5/11/2005	CODELL, ORIGINAL HOLE	RE-FRAC	
Technical Result		Tech Result Details	Tech Result Note
Comment			
Other In Hole			
Run Date	Des	OD (in)	Top (ftKB)
			Btm (ftKB)

Well Name: LOUSTALET B15-14

VERTICAL - ORIGINAL HOLE, 8/10/2012 9:40:27 AM

Logs

Date	Type	Top (ftKB)	Btm (ftKB)
7/11/1991	COMPENSATED DENSITY	3,900.0	6,892.0
7/16/1991	CEMENT BOND	5,820.0	6,839.0

