

## The Road to Excellence Starts with Safety

Sold To #: 300721		Ship To #: 300721		Quote #:		Sales Order #: 9110444	
Customer: WILLIAMS PRODUCTION RMT INC - EBUS				Customer Rep: Klatt, Brian			
Well Name: RWF		Well #: 541-36		API/UWI #: 05-045-20745			
Field: RULISON		City (SAP): TULSA		County/Parish: Garfield		State: Colorado	
Lat: N 39.485 deg. OR N 39 deg. 29 min. 7.717 secs.				Long: W 107.835 deg. OR W -108 deg. 9 min. 52.279 secs.			
Contractor: NABORS 576		Rig/Platform Name/Num: NABORS 576					
Job Purpose: Cement Surface Casing							
Well Type: Development Well				Job Type: Cement Surface Casing			
Sales Person: MAYO, MARK		Srcv Supervisor: YOUNG, JEREMY		MBU ID Emp #: 418013			
Job Personnel							
HES Emp Name	Exp Hrs	Emp #	HES Emp Name	Exp Hrs	Emp #	HES Emp Name	Exp Hrs
BATH, KYLE Thomas	5	477632	KUKUS, CARLTON Dean	5	458577	ROSS, CHARLES Raymond	5
YOUNG, JEREMY R	5	418013		5			
Equipment							
HES Unit #	Distance-1 way	HES Unit #	Distance-1 way	HES Unit #	Distance-1 way	HES Unit #	Distance-1 way
10867425	60 mile	10897891	60 mile	11259881	60 mile	11560046	60 mile
11562538	60 mile						
Job Hours							
Date	On Location Hours	Operating Hours	Date	On Location Hours	Operating Hours	Date	On Location Hours
12/17/2011	5	2.5					
TOTAL		Total is the sum of each column separately					
Job				Job Times			
Formation Name				Date	Time	Time Zone	
Formation Depth (MD) Top Bottom				Called Out	17 - Dec - 2011	14:00	MST
Form Type				On Location	17 - Dec - 2011	18:30	MST
Job depth MD 1138. ft				Job Started	17 - Dec - 2011	21:30	MST
Water Depth				Job Completed	17 - Dec - 2011	22:31	MST
Perforation Depth (MD) From To				Departed Loc	17 - Dec - 2011	23:30	MST
Well Data							
Description	New / Used	Max pressure psig	Size in	ID in	Weight lbm/ft	Thread	Grade
OPEN HOLE				13.5			
SURFACE CASING	Unknown		9.625	9.001	32.3		H-40
Sales/Rental/3 <sup>rd</sup> Party (HES)							
Description				Qty	Qty uom	Depth	Supplier
PLUG,CMTG,TOP,9 5/8,HWE,8.16 MIN/9.06 MA				1	EA		
Tools and Accessories							
Type	Size	Qty	Make	Depth	Type	Size	Qty
Guide Shoe					Packer		
Float Shoe					Bridge Plug		
Float Collar					Retainer		
Insert Float							
Stage Tool							
Miscellaneous Materials							
Gelling Agt		Conc		Surfactant		Conc	
Treatment Fld		Conc		Inhibitor		Conc	
Fluid Data							
Stage/Plug #: 1							

Fluid #	Stage Type	Fluid Name	Qty	Qty uom	Mixing Density lbm/gal	Yield ft <sup>3</sup> /sk	Mix Fluid Gal/sk	Rate bbl/min	Total Mix Fluid Gal/sk
1	Fresh Water	FRESH WATER	20.00	bbl	8.33	.0	.0	4	
2	Lead Cement	VERSACEM (TM) SYSTEM (452010)	160.0	sacks	12.3	2.38	13.75	8	13.75
3	Tail Cement	VERSACEM (TM) SYSTEM (452010)	160.0	sacks	12.8	2.11	11.75	8	11.75
4	Displacement Fluid	FRESH WATER	86.10	bbl	8.34	.0	.0	10	
<b>Calculated Values</b>		<b>Pressures</b>		<b>Volumes</b>					
Displacement	86.1	Shut In: Instant		Lost Returns	NO	Cement Slurry	127.9	Pad	
Top Of Cement	SURFACE	5 Min		Cement Returns	30	Actual Displacement	86.1	Treatment	
Frac Gradient		15 Min		Spacers	20	Load and Breakdown		Total Job	234
<b>Rates</b>									
Circulating		Mixing	8	Displacement	10	Avg. Job	9		
Cement Left In Pipe	Amount	44 ft	Reason	Shoe Joint					
Frac Ring # 1 @	ID		Frac ring # 2 @	ID		Frac Ring # 3 @	ID		Frac Ring # 4 @
The Information Stated Herein Is Correct				Customer Representative Signature					



*The Road to Excellence Starts with Safety*

Sold To #: 300721	Ship To #: 300721	Quote #:	Sales Order #: 9110444
Customer: WILLIAMS PRODUCTION RMT INC - EBUS	Customer Rep: Klatt, Brian		
Well Name: RWF	Well #: 541-36	API/UWI #: 05-045-20745	
Field: RULISON	City (SAP): TULSA	County/Parish: Garfield	State: Colorado
Legal Description:			
Lat: N 39.485 deg. OR N 39 deg. 29 min. 7.717 secs.		Long: W 107.835 deg. OR W -108 deg. 9 min. 52.279 secs.	
Contractor: NABORS 576	Rig/Platform Name/Num: NABORS 576		
Job Purpose: Cement Surface Casing	Ticket Amount:		
Well Type: Development Well	Job Type: Cement Surface Casing		
Sales Person: MAYO, MARK	Srv Supervisor: YOUNG, JEREMY	MBU ID Emp #: 418013	

Activity Description	Date/Time	Cht #	Rate bbl/ min	Volume bbl		Pressure psig		Comments
				Stage	Total	Tubing	Casing	
Call Out	12/17/2011 14:00							TD 1155 FT, TP 1138 FT, SHOE 44 FT, HOLE 13.5 IN, MUD 10.1 PPG, CSG 9 5/8 IN 32.3 LB/FT H-40
Pre-Convoy Safety Meeting	12/17/2011 16:20							WITH ALL HES PERSONNEL
Crew Leave Yard	12/17/2011 16:30							
Arrive At Loc	12/17/2011 18:30							RIG WAS RUNNING CASING UPON HES ARRIVAL
Assessment Of Location Safety Meeting	12/17/2011 20:00							WITH ALL HES PERSONNEL
Other	12/17/2011 20:10							SPOT EQUIPMENT
Pre-Rig Up Safety Meeting	12/17/2011 20:20							WITH ALL HES PERSONNEL
Rig-Up Equipment	12/17/2011 20:30							
Pre-Job Safety Meeting	12/17/2011 21:15							WITH ALL PERSONNEL ON LOCATION
Start Job	12/17/2011 21:30							
Other	12/17/2011 21:31		2	2			64.0	FILL LINES WITH FRESH WATER
Test Lines	12/17/2011 21:35							TEST LINES TO 3300 PSI. PRESSURE HOLDING
Pump Spacer 1	12/17/2011 21:40		4	20			113.0	FRESH WATER
Pump Lead Cement	12/17/2011 21:49		8	67.8			360.0	160 SKS AT 12.3 PPG, 2.38 FT3/SK, 13.75 GAL/SK
Activity Description	Date/Time	Cht	Rate bbl/ min	Volume bbl		Pressure psig		Comments

Sold To #: 300721

Ship To #: 300721

Quote #:

Sales Order #:

9110444

SUMMIT Version: 7.2.27

Wednesday, December 21, 2011 04:22:00

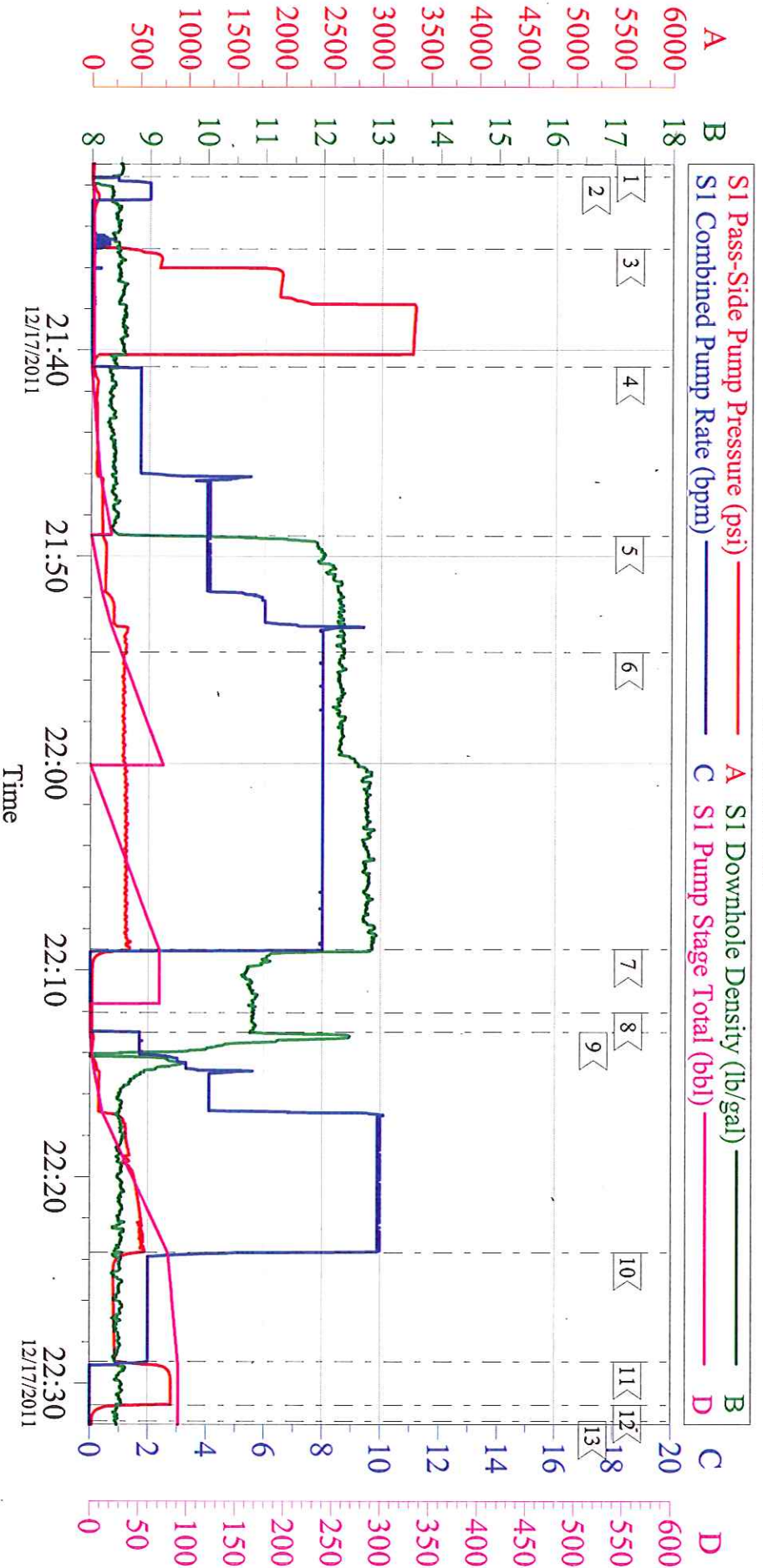
## Cementing Job Log

		#		Stage	Total	Tubing	Casing	
Pump Tail Cement	12/17/2011 21:54		8	60.1			400.0	160 SKS AT 12.8 PPG, 2.11 FT3/SK, 11.75 GAL/SK
Shutdown	12/17/2011 22:09							
Drop Top Plug	12/17/2011 22:12							PLUG LAUNCHED
Pump Displacement	12/17/2011 22:13		10	76.1			270.0	FRESH WATER
Slow Rate	12/17/2011 22:23		2	10			270.0	SLOW RATE 10 BBLs PRIOR TO CALCULATED DISPLACEMENT
Bump Plug	12/17/2011 22:28		2	86.1			830.0	PLUG BUMPED
Check Floats	12/17/2011 22:31							FLOATS HOLDING. RETURNED 0.5 BBL H2O TO PUMP
End Job	12/17/2011 22:31							PIPE WAS STATIC DURING JOB. GOO CIRCULATION THROUGHOUT JOB. HES RETURNED 30 BBL CEMENT TO SURFACE
Pre-Rig Down Safety Meeting	12/17/2011 22:40							WITH ALL HES PERSONNEL
Rig-Down Equipment	12/17/2011 22:50							
Pre-Convoy Safety Meeting	12/17/2011 23:20							WITH ALL HES PERSONNEL
Crew Leave Location	12/17/2011 23:30							
Comment	12/17/2011 23:31							THANK YOU FOR USING HALLIBURTON CEMENT DEPARTMENT. JEREMY YOUNG AND CREW.



# WILLIAMS - RWF 541-36

9 5/8 SURFACE



## Local Event Log

1 < START JOB	21:30:59	2 < FILL LINES	21:31:34	3 < TEST LINES	21:35:04
4 < PUMP H2O SPACER	21:40:48	5 < PUMP LEAD CEMENT	21:49:00	6 < PUMP TAIL CEMENT	21:54:38
7 < SHUTDOWN	22:09:00	8 < DROP TOP PLUG	22:12:03	9 < PUMP DISPLACEMENT	22:13:00
10 < SLOW RATE	22:23:40	11 < BUMP PLUG	22:28:57	12 < CHECK FLOATS	22:31:04
13 < END JOB	22:31:51				

Customer: WILLIAMS  
Well Description: RWF 541-36  
Company Rep: BRIAN KLAATT

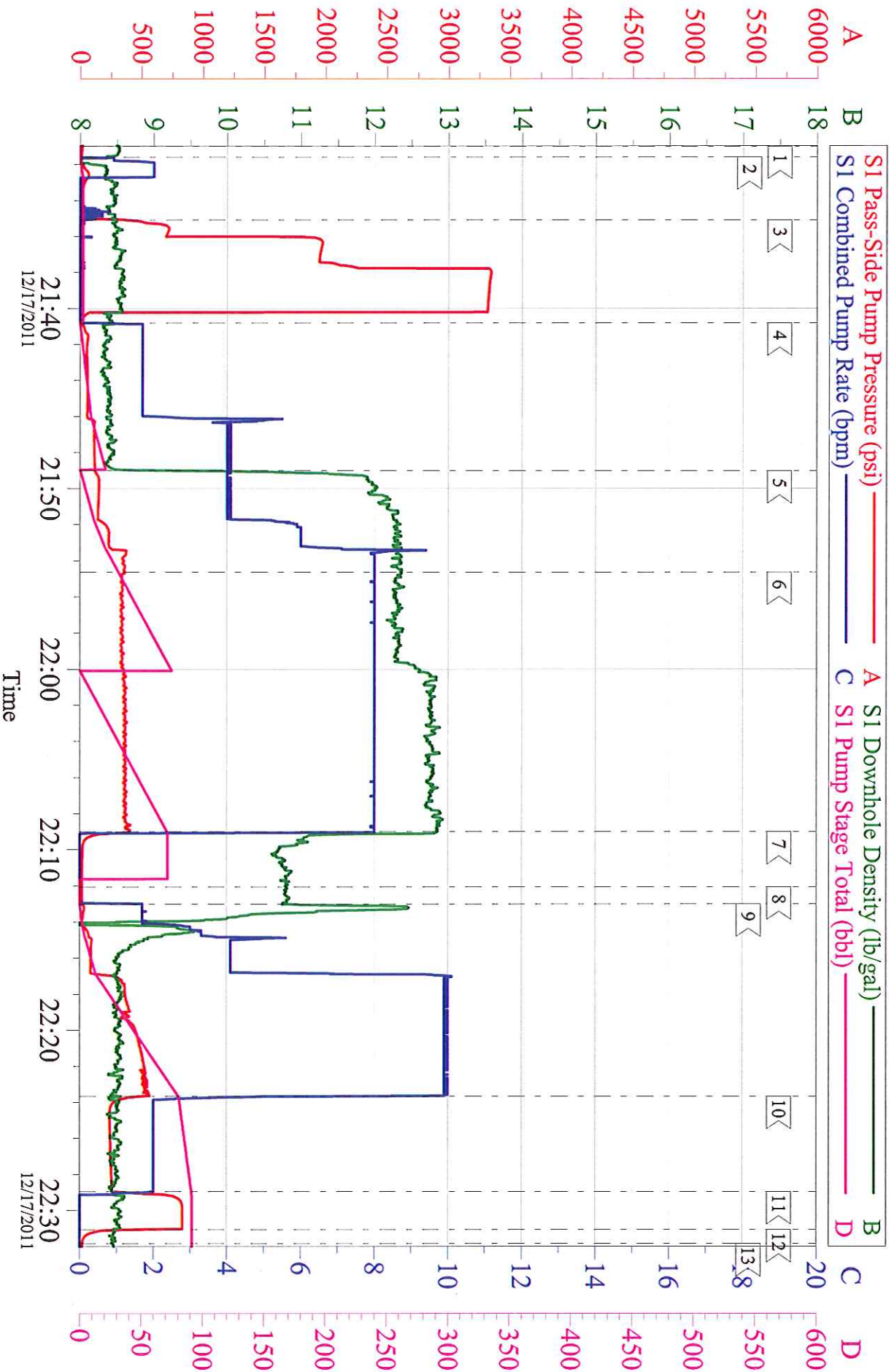
Job Date: 17-Dec-2011  
Job Type: SURFACE  
Cement Supervisor: JEREMY YOUNG

Sales Order #: 9110444  
ADC Used: YES  
Elite #: KYLE BATH

OptiCem v6.4.10  
17-Dec-11 22:49

# WILLIAMS - RWF 541-36

9 5/8 SURFACE



Customer: WILLIAMS  
Well Description: RWF 541-36  
Company Rep: BRIAN KLATT

Job Date: 17-Dec-2011  
Job Type: SURFACE  
Cement Supervisor: JEREMY YOUNG

Sales Order #: 9110444  
ADC Used: YES  
Elite #: KYLE BATH

OptiCem v6.4.10  
17-Dec-11 22:49