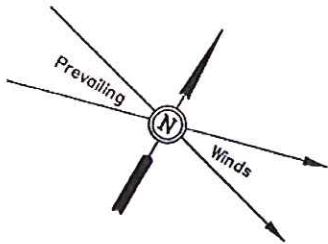


# WPX Energy Rocky Mountain, LLC

## PLAT #1 LOCATION LAYOUT FOR SMITH GULCH FRAC TANK PAD SECTION 32, T7S, R96W, 6th P.M.

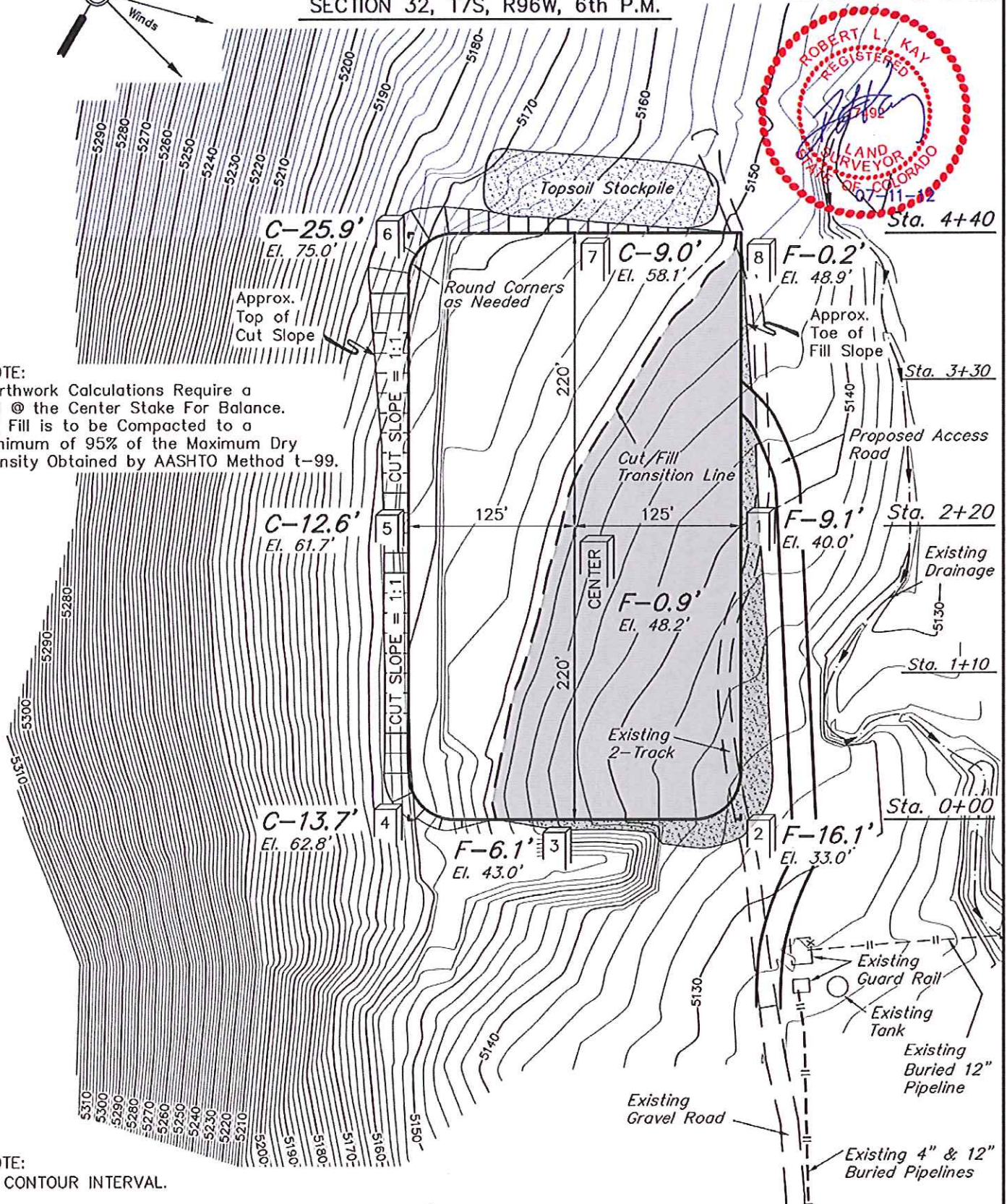
SCALE: 1" = 100'  
DATE: 05-15-12  
DRAWN BY: T.B.  
REVISED: 05-21-12  
REVISED: 07-10-12 M.D.



NOTE:  
Earthwork Calculations Require a  
Fill @ the Center Stake For Balance.  
All Fill is to be Compacted to a  
Minimum of 95% of the Maximum Dry  
Density Obtained by AASHTO Method t-99.

NOTE:  
2' CONTOUR INTERVAL.

Elev. Ungraded Ground At Center Stake = 5148.2'  
FINISHED GRADE ELEV. AT CENTER STAKE = 5149.1'



UINTAH ENGINEERING & LAND SURVEYING  
85 So. 200 East • Vernal, Utah 84078 • (435) 789-1017



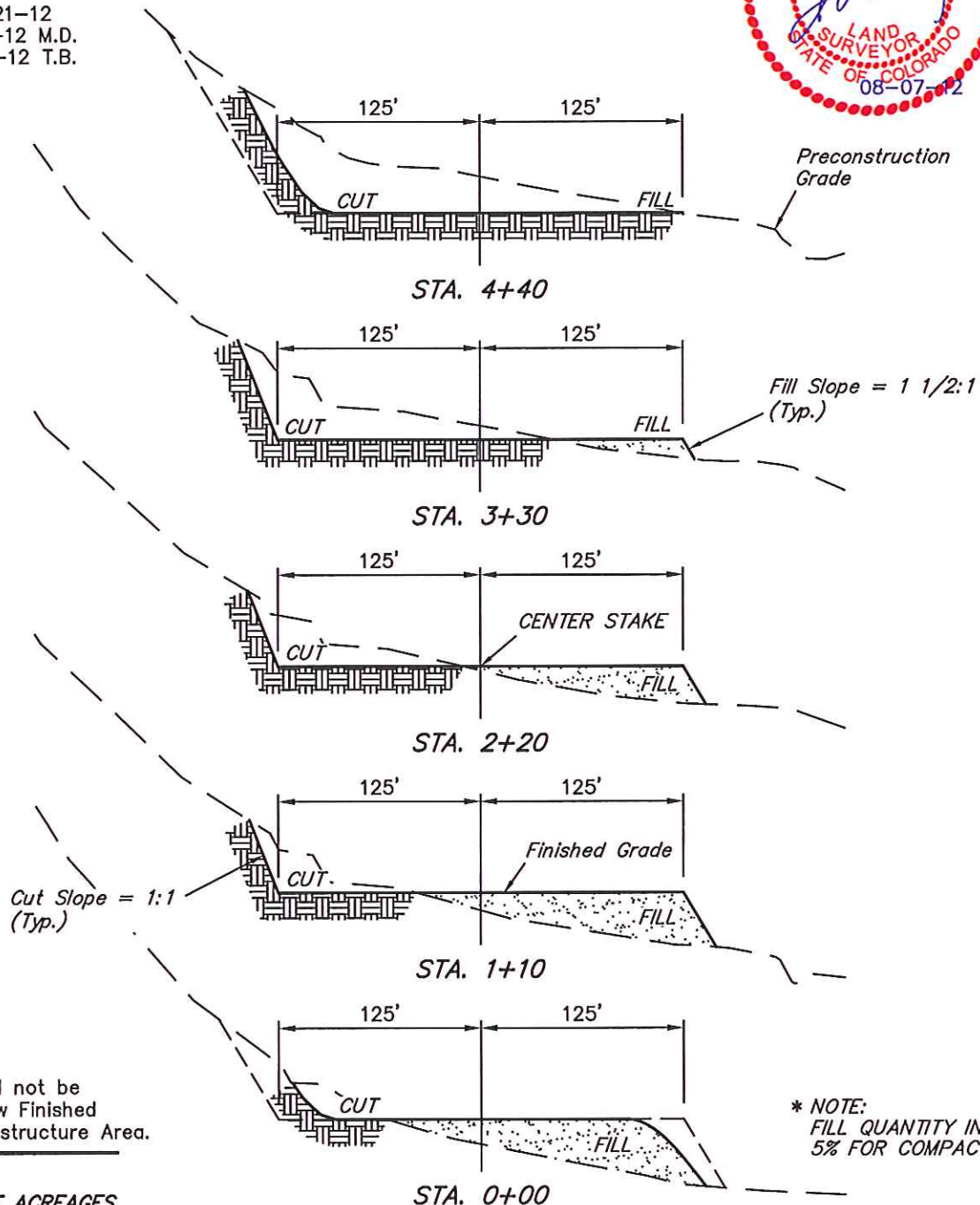
# WPX Energy Rocky Mountain, LLC

## PLAT #2\_TYPICAL CROSS SECTION FOR SMITH GULCH FRAC TANK PAD SECTION 32, T7S, R96W, 6th P.M.



1" = 40'  
X-Section  
Scale  
1" = 100'

DATE: 05-15-12  
DRAWN BY: T.B.  
REVISED: 05-21-12  
REVISED: 07-10-12 M.D.  
REVISED: 08-07-12 T.B.



### NOTE:

Topsoil should not be  
Stripped Below Finished  
Grade on Substructure Area.

\* NOTE:  
FILL QUANTITY INCLUDES  
5% FOR COMPACTION

### APPROXIMATE ACREAGES

AREA OF MAX. DISTURBANCE = 4.158 ACRES  
TOTAL DISTURBANCE OF ROAD = 0.180 ACRES

### APPROXIMATE YARDAGES

(6") Topsoil Stripping = 2,300 Cu. Yds.  
Remaining Location = 15,220 Cu. Yds.  
TOTAL CUT = 17,520 CU. YDS.  
FILL = 15,220 CU. YDS.

EXCESS MATERIAL = 2,300 Cu. Yds.  
Topsoil = 2,300 Cu. Yds.  
EXCESS UNBALANCE = 0 Cu. Yds.  
(After Interim Rehabilitation)

UINTAH ENGINEERING & LAND SURVEYING  
85 So. 200 East \* Vernal, Utah 84078 \* (435) 789-1017