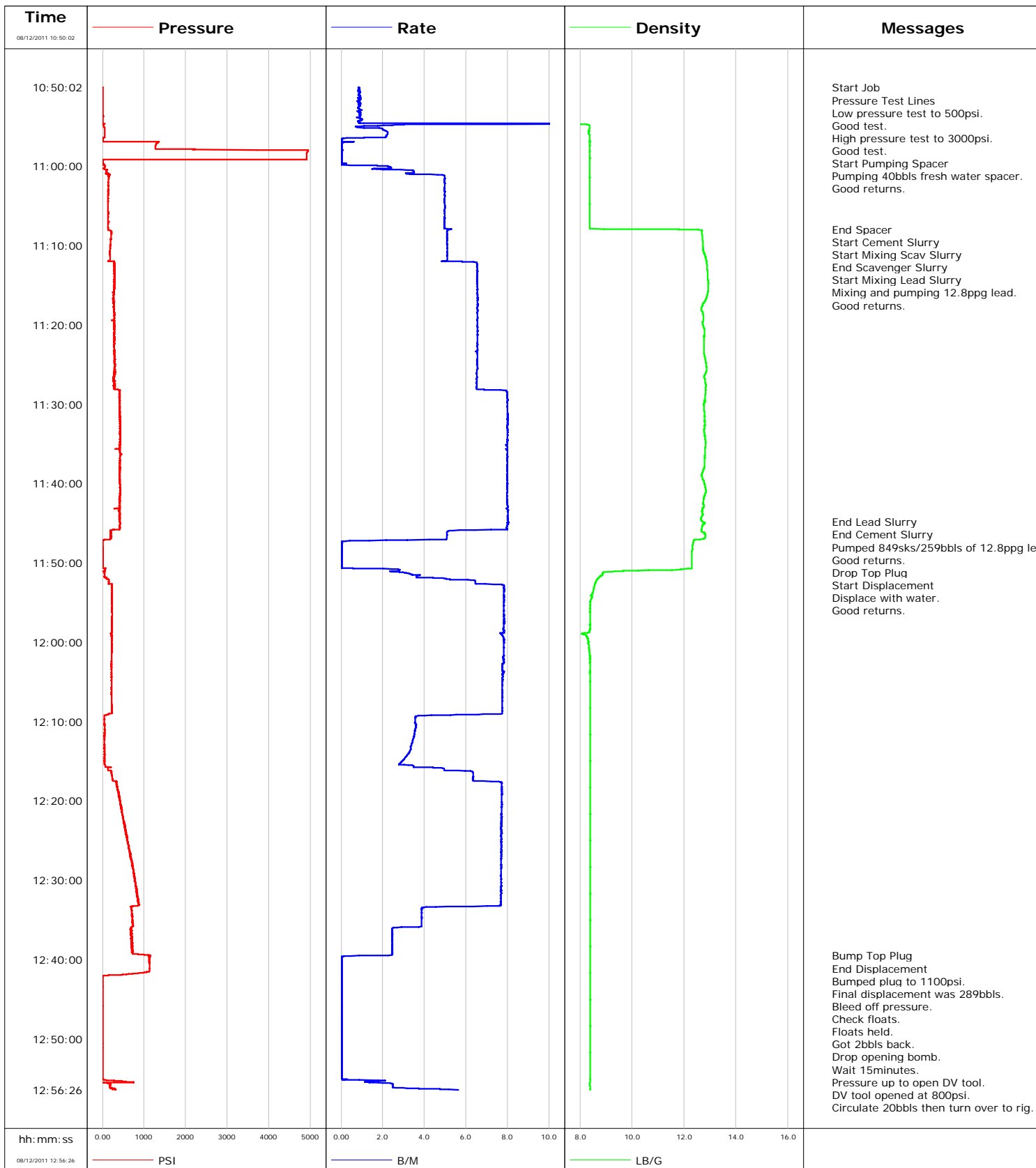


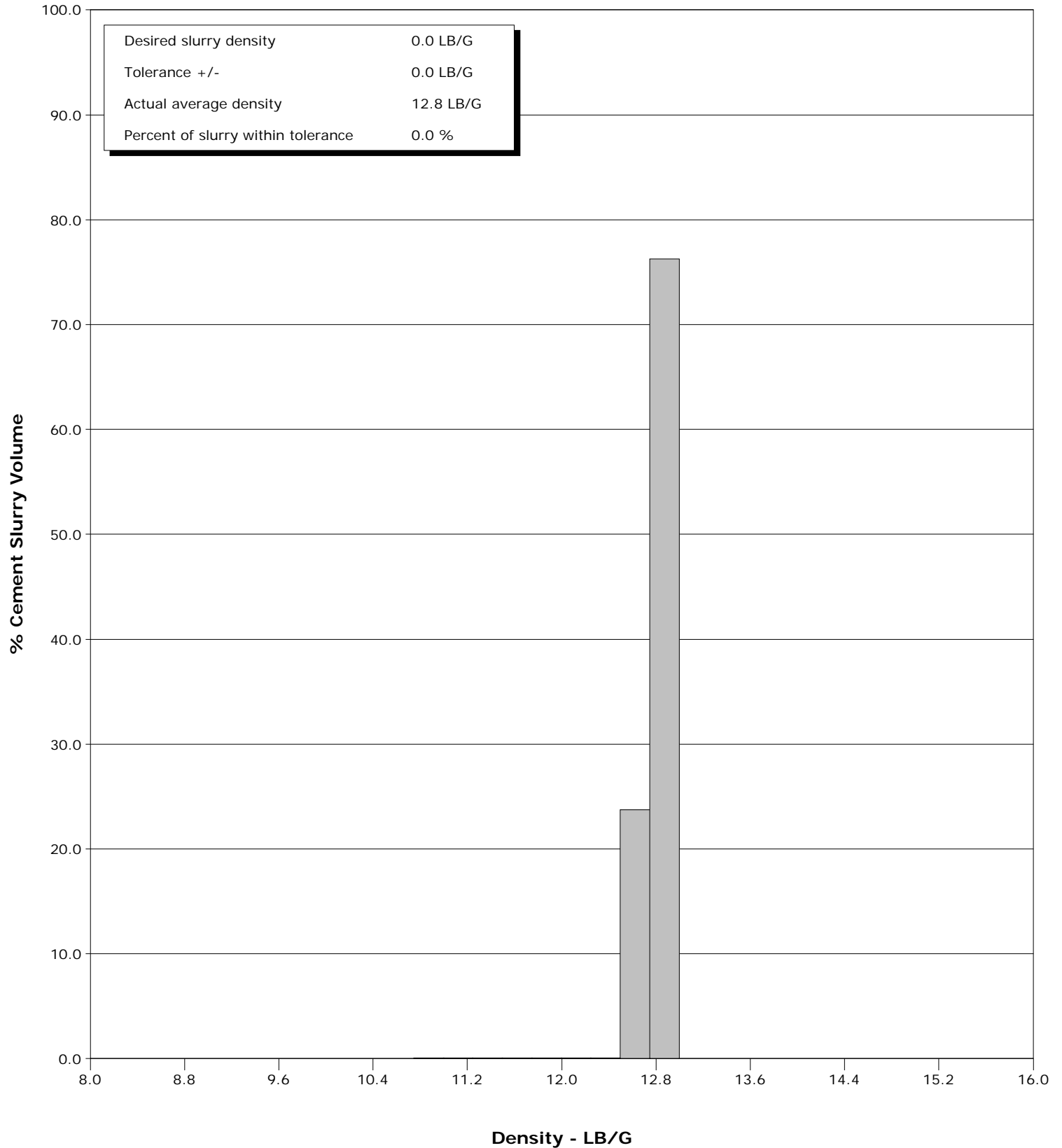
<b>Well</b>	RGU 523-35-198	<b>Client</b>	WILLIAMS
<b>Field</b>	RYAN GULCH	<b>SIR No.</b>	BUS5-00004
<b>Engineer</b>	JEFF PATTERSON	<b>Job Type</b>	9 5/8" 2 STAGE SURFACE
<b>Country</b>	United States	<b>Job Date</b>	08-12-2011



**Well** RGU 523-35-198  
**Field** RYAN GULCH  
**Engineer** JEFF PATTERSON  
**Country** United States

**Client** WILLIAMS  
**SIR No.** BUS5-00004  
**Job Type** 9 5/8" 2 STAGE SURFACE  
**Job Date** 08-12-2011

Cement Slurry - 08/12/2011 11:07:57 to 08/12/2011 11:44:49





# Cementing Service Report

				Customer WILLIAMS		Job Number BUS5-00004		
Well RGU 523-35-198 RGU 523-35-198			Location (legal)		Schlumberger Location GRAND JUNCTION,COLORADO		Job Start Aug/12/2011	
Field RYAN GULCH		Formation Name/Type SHALE		Deviation 0 deg	Bit Size 13.5 in	Well MD 3828.0 ft		Well TVD 3828.0 ft
County RIO BLANCO		State/Province Colorado		BHP	BHST 121 degF	BHCT 89 degF	Pore Press. Gradient	
Well Master 0631304252		API/UWI						
Rig Name CYCLONE 29	Drilled For Gas	Service Via Land	Casing/Liner					
			Depth, ft	Size, in	Weight, lb/ft	Grade	Thread	
Offshore Zone	Well Class New	Well Type Development	3828.0	9.630	36.0	J55	8RD	
			0.0	0.000	0.0			
Drilling Fluid Type		Max. Density	Plastic Viscosity	Tubing/Drill Pipe				
				Depth,	Size,	Weight,	Grade	Thread
Service Line Cementing	Job Type 9 5/8" 2 STAGE SURFACE							
Max. Allowed Tub. Press 3000 psi	Max. Allowed Ann. Press	WH Connection 9 5/8" CEMENT HEAD	Perforations/Open Hole					
			Top,	Bottom,		No. of Shots	Total Interval	
							Diameter	
Service Instructions CEMENT STAGE 1 WITH. 40BBLS OF WATER. 849SKS 12.8PPG LEAD. DISPLACE WITH WATER AND MUD.				Treat Down Casing	Displacement 292.6 bbl	Packer Type	Packer Depth	
				Tubing Vol.	Casing Vol. 295.9 bbl	Annular Vol. 211.0 bbl	Openhole Vol. 544.0 bbl	
Casing/Tubing Secured <input checked="" type="checkbox"/>		1 Hole Vol. Circulated prior to Cement <input checked="" type="checkbox"/>		Casing Tools		Squeeze Job		
Lift Pressure 1894 psi				Shoe Type Guide		Squeeze Type		
Pipe Rotated <input type="checkbox"/>		Pipe Reciprocated <input type="checkbox"/>		Shoe Depth 3828.0 ft		Tool Type		
No. Centralizers		Top Plugs 1	Bottom Plugs	Stage Tool Type DV		Tool Depth		
Cement Head Type Single				Stage Tool Depth 1755.0 ft		Tail Pipe Size		
Job Scheduled For Aug/12/2011		Arrived on Location Aug/12/2011	Leave Location Aug/12/2011	Collar Type Float		Tail Pipe Depth		
				Collar Depth 3785.0 ft		Sqz. Total Vol.		
Date	Time 24-hr clock	Treating Pressure PSI	Flow Rate B/M	Density LB/G	Volume BBL	Message		
08/12/2011	10:49:42					Started Acquisition		
08/12/2011	10:50:02					Start Job		
08/12/2011	10:50:02	-3	0.9	0.48	0.0			
08/12/2011	10:50:04					Pressure Test Lines		
08/12/2011	10:50:04	-3	0.8	0.48	0.0			
08/12/2011	10:50:05					Low pressure test to 500psi.		
08/12/2011	10:50:05	-3	0.9	0.48	0.1			
08/12/2011	10:50:06					Good test.		
08/12/2011	10:50:06	-3	0.9	0.48	0.1			
08/12/2011	10:50:07					High pressure test to 3000psi.		
08/12/2011	10:50:07					Good test.		
08/12/2011	10:50:07	-3	0.9	0.48	0.1			
08/12/2011	10:50:09					Start Pumping Spacer		
08/12/2011	10:50:09	-3	0.9	0.48	0.1			
08/12/2011	10:50:10					Pumping 40bbls fresh water spacer.		
08/12/2011	10:50:10					Good returns.		
08/12/2011	10:50:10	-3	0.8	0.48	0.1			
08/12/2011	10:50:12	-3	0.9	0.48	0.2			
08/12/2011	10:50:42	-3	0.8	0.48	0.6			
08/12/2011	10:51:12	-3	0.9	0.48	1.0			
08/12/2011	10:51:42	-3	0.8	0.48	1.5			

Well RGU 523-35-198 RGU 523-35-198			Field RYAN GULCH		Job Start Aug/12/2011	Customer WILLIAMS	Job Number BUS5-00004
Date	Time 24-hr clock	Treating Pressure PSI	Flow Rate B/M	Density LB/G	Volume BBL	Message	
08/12/2011	10:52:42	-5	0.8	0.48	2.3		
08/12/2011	10:53:12	-4	0.9	0.48	2.8		
08/12/2011	10:53:42	-2	0.9	0.48	3.2		
08/12/2011	10:54:12	-4	0.9	0.48	3.7		
08/12/2011	10:54:42	17	7.8	7.28	5.6		
08/12/2011	10:55:12	53	1.5	8.38	6.6		
08/12/2011	10:55:42	52	2.2	8.36	7.6		
08/12/2011	10:56:12	52	2.2	8.38	8.7		
08/12/2011	10:56:42	11	0.0	8.38	9.2		
08/12/2011	10:57:12	1292	0.0	8.38	9.2		
08/12/2011	10:57:42	1266	0.0	8.38	9.2		
08/12/2011	10:58:12	4920	0.0	8.38	9.2		
08/12/2011	10:58:42	4902	0.0	8.38	9.2		
08/12/2011	10:59:12	17	0.0	8.38	9.2		
08/12/2011	10:59:42	15	0.2	8.38	9.2		
08/12/2011	11:00:12	60	2.4	8.38	9.9		
08/12/2011	11:00:42	100	3.5	8.38	11.2		
08/12/2011	11:01:12	155	5.0	8.38	13.1		
08/12/2011	11:01:42	141	5.0	8.38	15.6		
08/12/2011	11:02:12	141	5.0	8.38	18.1		
08/12/2011	11:02:42	142	5.0	8.38	20.6		
08/12/2011	11:03:12	139	5.0	8.38	23.1		
08/12/2011	11:03:42	138	5.0	8.38	25.6		
08/12/2011	11:04:12	139	5.0	8.38	28.1		
08/12/2011	11:04:42	138	5.0	8.38	30.5		
08/12/2011	11:05:12	134	5.0	8.38	33.0		
08/12/2011	11:05:42	138	5.0	8.38	35.5		
08/12/2011	11:06:12	139	5.0	8.38	38.0		
08/12/2011	11:06:42	136	5.0	8.38	40.5		
08/12/2011	11:07:12	141	5.0	8.38	43.0		
08/12/2011	11:07:42	138	5.0	8.38	45.5		
08/12/2011	11:07:56					End Spacer	
08/12/2011	11:07:56	134	5.2	8.94	46.6		
08/12/2011	11:07:57					Start Cement Slurry	
08/12/2011	11:07:57	134	5.3	10.74	46.7		
08/12/2011	11:07:58					Start Mixing Scav Slurry	
08/12/2011	11:07:58	132	5.2	11.79	46.8		
08/12/2011	11:08:12	214	5.1	12.69	48.0		
08/12/2011	11:08:42	214	5.1	12.70	50.5		
08/12/2011	11:08:46					End Scavenger Slurry	
08/12/2011	11:08:46	212	5.1	12.70	50.9		
08/12/2011	11:08:47					Start Mixing Lead Slurry	
08/12/2011	11:08:47	211	5.1	12.70	51.0		
08/12/2011	11:08:48					Mixing and pumping 12.8ppg lead.	
08/12/2011	11:08:48					Good returns.	
08/12/2011	11:08:48	211	5.1	12.70	51.0		
08/12/2011	11:09:12	203	5.1	12.71	53.1		
08/12/2011	11:09:42	194	5.1	12.73	55.6		
08/12/2011	11:10:12	186	5.1	12.74	58.2		
08/12/2011	11:10:42	179	5.1	12.75	60.7		
08/12/2011	11:11:12	181	5.1	12.80	63.3		
08/12/2011	11:11:42	181	5.1	12.85	65.8		
08/12/2011	11:12:12	293	6.5	12.87	68.6		
08/12/2011	11:12:42	284	6.5	12.89	71.9		

Well RGU 523-35-198 RGU 523-35-198			Field RYAN GULCH		Job Start Aug/12/2011		Customer WILLIAMS		Job Number BUS5-00004	
Date	Time 24-hr clock	Treating Pressure PSI	Flow Rate B/M	Density LB/G	Volume BBL	Message				
08/12/2011	11:13:42	293	6.5	12.91	78.4					
08/12/2011	11:14:12	293	6.5	12.92	81.7					
08/12/2011	11:14:42	285	6.5	12.93	84.9					
08/12/2011	11:15:12	297	6.5	12.93	88.2					
08/12/2011	11:15:42	277	6.5	12.93	91.5					
08/12/2011	11:16:12	284	6.6	12.90	94.8					
08/12/2011	11:16:42	251	6.6	12.85	98.0					
08/12/2011	11:17:12	269	6.6	12.77	101.3					
08/12/2011	11:17:42	266	6.5	12.70	104.6					
08/12/2011	11:18:12	287	6.5	12.68	107.9					
08/12/2011	11:18:42	294	6.6	12.74	111.1					
08/12/2011	11:19:12	282	6.5	12.75	114.4					
08/12/2011	11:19:42	290	6.6	12.72	117.7					
08/12/2011	11:20:12	281	6.5	12.75	121.0					
08/12/2011	11:20:42	282	6.6	12.78	124.2					
08/12/2011	11:21:12	294	6.5	12.78	127.5					
08/12/2011	11:21:42	294	6.5	12.77	130.8					
08/12/2011	11:22:12	274	6.5	12.77	134.1					
08/12/2011	11:22:42	278	6.5	12.77	137.3					
08/12/2011	11:23:12	291	6.6	12.76	140.6					
08/12/2011	11:23:42	282	6.5	12.78	143.9					
08/12/2011	11:24:12	286	6.6	12.81	147.1					
08/12/2011	11:24:42	294	6.5	12.84	150.4					
08/12/2011	11:25:12	293	6.5	12.86	153.7					
08/12/2011	11:25:42	290	6.5	12.87	157.0					
08/12/2011	11:26:12	305	6.5	12.83	160.2					
08/12/2011	11:26:42	280	6.5	12.79	163.5					
08/12/2011	11:27:12	293	6.5	12.81	166.7					
08/12/2011	11:27:42	262	6.5	12.84	170.0					
08/12/2011	11:28:12	403	7.3	12.83	173.3					
08/12/2011	11:28:42	414	8.0	12.82	177.2					
08/12/2011	11:29:12	404	8.0	12.81	181.2					
08/12/2011	11:29:42	413	8.0	12.80	185.2					
08/12/2011	11:30:12	412	8.0	12.76	189.2					
08/12/2011	11:30:42	413	8.0	12.77	193.2					
08/12/2011	11:31:12	413	8.0	12.79	197.2					
08/12/2011	11:31:42	425	8.0	12.79	201.2					
08/12/2011	11:32:12	431	8.0	12.80	205.2					
08/12/2011	11:32:42	420	8.0	12.80	209.2					
08/12/2011	11:33:12	422	8.0	12.78	213.2					
08/12/2011	11:33:42	417	8.0	12.79	217.2					
08/12/2011	11:34:12	430	8.0	12.81	221.2					
08/12/2011	11:34:42	427	8.0	12.84	225.2					
08/12/2011	11:35:12	421	7.9	12.83	229.1					
08/12/2011	11:35:42	425	7.9	12.81	233.1					
08/12/2011	11:36:12	432	8.0	12.80	237.1					
08/12/2011	11:36:42	420	8.0	12.80	241.1					
08/12/2011	11:37:12	424	8.0	12.79	245.1					
08/12/2011	11:37:42	427	8.0	12.79	249.1					
08/12/2011	11:38:12	426	8.0	12.76	253.1					
08/12/2011	11:38:42	407	8.0	12.71	257.1					
08/12/2011	11:39:12	417	8.0	12.71	261.1					
08/12/2011	11:39:42	410	8.0	12.77	265.0					
08/12/2011	11:40:12	420	8.0	12.80	269.0					

Well RGU 523-35-198 RGU 523-35-198			Field RYAN GULCH		Job Start Aug/12/2011		Customer WILLIAMS		Job Number BUS5-00004	
Date	Time 24-hr clock	Treating Pressure PSI	Flow Rate B/M	Density LB/G	Volume BBL	Message				
08/12/2011	11:41:12	419	8.0	12.83	277.0					
08/12/2011	11:41:42	409	8.0	12.77	281.0					
08/12/2011	11:42:12	421	8.0	12.75	285.0					
08/12/2011	11:42:42	417	8.0	12.77	289.0					
08/12/2011	11:43:12	420	8.0	12.72	293.0					
08/12/2011	11:43:42	413	8.0	12.71	297.0					
08/12/2011	11:44:12	419	8.0	12.68	301.0					
08/12/2011	11:44:42	416	8.0	12.68	305.0					
08/12/2011	11:44:48					End Lead Slurry				
08/12/2011	11:44:48	409	8.0	12.71	305.8					
08/12/2011	11:44:49					End Cement Slurry				
08/12/2011	11:44:49	409	8.0	12.72	305.9					
08/12/2011	11:44:50					Pumped 849sks/259bbls of 12.8ppg lead.				
08/12/2011	11:44:50	425	8.0	12.74	306.0					
08/12/2011	11:44:51					Good returns.				
08/12/2011	11:44:51	425	8.0	12.74	306.2					
08/12/2011	11:44:54					Drop Top Plug				
08/12/2011	11:44:54	410	8.1	12.79	306.6					
08/12/2011	11:44:55					Start Displacement				
08/12/2011	11:44:55	423	8.0	12.78	306.7					
08/12/2011	11:44:56					Displace with water.				
08/12/2011	11:44:56					Good returns.				
08/12/2011	11:44:56	419	8.0	12.78	306.8					
08/12/2011	11:45:12	418	8.0	12.73	309.0					
08/12/2011	11:45:42	422	8.0	12.69	313.0					
08/12/2011	11:46:12	202	5.1	12.79	316.0					
08/12/2011	11:46:42	201	5.1	12.83	318.6					
08/12/2011	11:47:12	-1	1.4	12.37	320.9					
08/12/2011	11:47:42	-2	0.0	12.34	320.9					
08/12/2011	11:48:12	9	0.0	12.32	320.9					
08/12/2011	11:48:42	8	0.0	12.31	321.0					
08/12/2011	11:49:12	6	0.0	12.30	321.0					
08/12/2011	11:49:42	6	0.0	12.30	321.0					
08/12/2011	11:50:12	10	0.0	12.30	321.0					
08/12/2011	11:50:42	88	0.6	12.30	321.0					
08/12/2011	11:51:12	47	2.9	8.93	322.2					
08/12/2011	11:51:42	48	3.6	8.77	323.9					
08/12/2011	11:52:12	153	6.4	8.64	326.2					
08/12/2011	11:52:42	231	6.9	8.58	329.4					
08/12/2011	11:53:12	228	7.8	8.54	333.3					
08/12/2011	11:53:42	229	7.8	8.50	337.2					
08/12/2011	11:54:12	226	7.8	8.47	341.1					
08/12/2011	11:54:42	230	7.8	8.42	345.0					
08/12/2011	11:55:12	231	7.8	8.39	348.9					
08/12/2011	11:55:42	229	7.8	8.39	352.9					
08/12/2011	11:56:12	232	7.8	8.38	356.8					
08/12/2011	11:56:42	232	7.8	8.39	360.7					
08/12/2011	11:57:12	231	7.8	8.39	364.6					
08/12/2011	11:57:42	231	7.8	8.39	368.5					
08/12/2011	11:58:12	225	7.8	8.39	372.4					
08/12/2011	11:58:42	234	7.8	8.37	376.3					
08/12/2011	11:59:12	220	7.8	8.26	380.2					
08/12/2011	11:59:42	228	7.8	8.30	384.1					
08/12/2011	12:00:12	222	7.8	8.34	388.0					

Well RGU 523-35-198 RGU 523-35-198			Field RYAN GULCH		Job Start Aug/12/2011		Customer WILLIAMS		Job Number BUS5-00004	
Date	Time 24-hr clock	Treating Pressure PSI	Flow Rate B/M	Density LB/G	Volume BBL	Message				
08/12/2011	12:01:12	223	7.8	8.36	395.8					
08/12/2011	12:01:42	217	7.8	8.38	399.7					
08/12/2011	12:02:12	221	7.8	8.38	403.6					
08/12/2011	12:02:42	220	7.8	8.39	407.5					
08/12/2011	12:03:12	218	7.7	8.39	411.4					
08/12/2011	12:03:42	219	7.8	8.38	415.3					
08/12/2011	12:04:12	220	7.8	8.39	419.2					
08/12/2011	12:04:42	222	7.8	8.39	423.0					
08/12/2011	12:05:12	220	7.7	8.39	426.9					
08/12/2011	12:05:42	222	7.7	8.39	430.8					
08/12/2011	12:06:12	219	7.7	8.39	434.7					
08/12/2011	12:06:42	221	7.7	8.39	438.5					
08/12/2011	12:07:12	219	7.7	8.39	442.4					
08/12/2011	12:07:42	224	7.7	8.39	446.3					
08/12/2011	12:08:12	225	7.7	8.39	450.1					
08/12/2011	12:08:42	228	7.7	8.39	454.0					
08/12/2011	12:09:12	57	4.8	8.39	457.7					
08/12/2011	12:09:42	50	3.6	8.39	459.5					
08/12/2011	12:10:12	49	3.5	8.39	461.3					
08/12/2011	12:10:42	51	3.6	8.39	463.1					
08/12/2011	12:11:12	51	3.5	8.39	464.9					
08/12/2011	12:11:42	51	3.5	8.39	466.6					
08/12/2011	12:12:12	50	3.5	8.39	468.4					
08/12/2011	12:12:42	50	3.4	8.39	470.1					
08/12/2011	12:13:12	49	3.3	8.39	471.8					
08/12/2011	12:13:42	51	3.3	8.39	473.5					
08/12/2011	12:14:12	50	3.2	8.39	475.1					
08/12/2011	12:14:42	51	3.0	8.39	476.6					
08/12/2011	12:15:12	50	2.9	8.39	478.1					
08/12/2011	12:15:42	71	3.5	8.39	479.7					
08/12/2011	12:16:12	209	5.2	8.39	482.0					
08/12/2011	12:16:42	227	6.3	8.39	485.1					
08/12/2011	12:17:12	235	6.3	8.39	488.2					
08/12/2011	12:17:42	329	7.7	8.39	491.6					
08/12/2011	12:18:12	362	7.7	8.39	495.4					
08/12/2011	12:18:42	365	7.7	8.39	499.3					
08/12/2011	12:19:12	384	7.7	8.39	503.2					
08/12/2011	12:19:42	406	7.7	8.39	507.0					
08/12/2011	12:20:12	440	7.7	8.39	510.9					
08/12/2011	12:20:42	445	7.7	8.39	514.7					
08/12/2011	12:21:12	463	7.7	8.39	518.6					
08/12/2011	12:21:42	482	7.7	8.39	522.4					
08/12/2011	12:22:12	500	7.7	8.39	526.3					
08/12/2011	12:22:42	510	7.7	8.39	530.1					
08/12/2011	12:23:12	532	7.7	8.39	534.0					
08/12/2011	12:23:42	550	7.7	8.39	537.8					
08/12/2011	12:24:12	569	7.7	8.39	541.7					
08/12/2011	12:24:42	585	7.7	8.39	545.5					
08/12/2011	12:25:12	606	7.7	8.39	549.4					
08/12/2011	12:25:42	624	7.7	8.39	553.2					
08/12/2011	12:26:12	648	7.7	8.39	557.1					
08/12/2011	12:26:42	663	7.7	8.39	560.9					
08/12/2011	12:27:12	680	7.7	8.39	564.7					
08/12/2011	12:27:42	699	7.7	8.39	568.6					

Well RGU 523-35-198 RGU 523-35-198			Field RYAN GULCH		Job Start Aug/12/2011	Customer WILLIAMS	Job Number BUS5-00004
Date	Time 24-hr clock	Treating Pressure PSI	Flow Rate B/M	Density LB/G	Volume BBL	Message	
08/12/2011	12:28:42	738	7.7	8.39	576.3		
08/12/2011	12:29:12	750	7.7	8.39	580.1		
08/12/2011	12:29:42	768	7.7	8.39	584.0		
08/12/2011	12:30:12	787	7.7	8.39	587.8		
08/12/2011	12:30:42	804	7.7	8.39	591.6		
08/12/2011	12:31:12	817	7.7	8.39	595.5		
08/12/2011	12:31:42	821	7.7	8.39	599.3		
08/12/2011	12:32:12	845	7.7	8.39	603.2		
08/12/2011	12:32:42	857	7.7	8.39	607.0		
08/12/2011	12:33:12	874	7.7	8.39	610.8		
08/12/2011	12:33:42	702	3.9	8.39	613.3		
08/12/2011	12:34:12	706	3.9	8.39	615.2		
08/12/2011	12:34:42	715	3.9	8.39	617.2		
08/12/2011	12:35:12	724	3.9	8.39	619.1		
08/12/2011	12:35:42	730	3.9	8.39	621.0		
08/12/2011	12:36:12	675	2.5	8.39	622.6		
08/12/2011	12:36:42	684	2.5	8.39	623.8		
08/12/2011	12:37:12	687	2.5	8.39	625.0		
08/12/2011	12:37:42	687	2.5	8.39	626.3		
08/12/2011	12:38:12	693	2.5	8.39	627.5		
08/12/2011	12:38:42	709	2.5	8.39	628.7		
08/12/2011	12:39:12	726	2.5	8.39	629.9		
08/12/2011	12:39:30					Bump Top Plug	
08/12/2011	12:39:30					End Displacement	
08/12/2011	12:39:30	1153	2.3	8.39	630.7		
08/12/2011	12:39:32					Bumped plug to 1100psi.	
08/12/2011	12:39:32					Final displacement was 289bbls.	
08/12/2011	12:39:32	1098	1.7	8.39	630.8		
08/12/2011	12:39:33					Bleed off pressure.	
08/12/2011	12:39:33					Check floats.	
08/12/2011	12:39:33	1151	0.9	8.39	630.8		
08/12/2011	12:39:34					Floats held.	
08/12/2011	12:39:34					Got 2bbls back.	
08/12/2011	12:39:34	1129	0.5	8.39	630.8		
08/12/2011	12:39:36					Drop opening bomb.	
08/12/2011	12:39:36					Wait 15minutes.	
08/12/2011	12:39:36	1152	0.2	8.39	630.8		
08/12/2011	12:39:37					Pressure up to open DV tool.	
08/12/2011	12:39:37	1140	0.1	8.39	630.8		
08/12/2011	12:39:42	1138	0.0	8.39	630.8		
08/12/2011	12:40:12	1126	0.0	8.39	630.8		
08/12/2011	12:40:42	1129	0.0	8.39	630.8		
08/12/2011	12:41:12	1133	0.0	8.39	630.8		
08/12/2011	12:41:42	929	0.0	8.39	630.8		
08/12/2011	12:42:12	-7	0.0	8.39	630.8		
08/12/2011	12:42:42	-4	0.0	8.39	630.8		
08/12/2011	12:43:12	-4	0.0	8.39	630.8		
08/12/2011	12:43:42	-4	0.0	8.39	630.8		
08/12/2011	12:44:12	-5	0.0	8.39	630.8		
08/12/2011	12:44:42	-4	0.0	8.39	630.8		
08/12/2011	12:45:12	-4	0.0	8.39	630.8		
08/12/2011	12:45:42	-4	0.0	8.39	630.8		
08/12/2011	12:46:12	-5	0.0	8.39	630.8		
08/12/2011	12:46:42	-4	0.0	8.39	630.8		



Well			Field		Job Start	Customer		Job Number
RGU 523-35-198 RGU 523-35-198			RYAN GULCH		Aug/12/2011	WILLIAMS		BUS5-00004
Date	Time 24-hr clock	Treating Pressure PSI		Flow Rate B/M	Density LB/G	Volume BBL	Message	
08/12/2011	12:47:42	-4		0.0	8.39	630.8		
08/12/2011	12:48:12	-4		0.0	8.39	630.8		
08/12/2011	12:48:42	-4		0.0	8.39	630.8		
08/12/2011	12:49:12	-4		0.0	8.39	630.8		
08/12/2011	12:49:42	-4		0.0	8.39	630.8		
08/12/2011	12:50:12	-4		0.0	8.39	630.8		
08/12/2011	12:50:42	-4		0.0	8.39	630.8		
08/12/2011	12:51:12	-4		0.0	8.39	630.8		
08/12/2011	12:51:42	-5		0.0	8.39	630.8		
08/12/2011	12:52:12	-4		0.0	8.39	630.8		
08/12/2011	12:52:42	-4		0.0	8.39	630.8		
08/12/2011	12:53:12	-5		0.0	8.39	630.8		
08/12/2011	12:53:42	-4		0.0	8.39	630.8		
08/12/2011	12:54:12	-4		0.0	8.39	630.8		
08/12/2011	12:54:42	-4		0.0	8.39	630.8		
08/12/2011	12:55:12	49		0.1	8.39	630.8		
08/12/2011	12:55:40						DV tool opened at 800psi.	
08/12/2011	12:55:40						Circulate 20bbls then turn over to rig.	
08/12/2011	12:55:40	195		2.4	8.38	631.6		
08/12/2011	12:55:42	175		2.5	8.38	631.7		
08/12/2011	12:56:12	198		2.6	8.39	632.9		
08/12/2011	12:56:19						End Job	
08/12/2011	12:56:19	276		3.7	8.39	633.3		

Post Job Summary

Average Pump Rates, bbl/min					Volume of Fluid Injected, bbl			
Slurry 7.0	N2	Mud	Maximum Rate 8.0	Total Slurry 259.0	Mud	Spacer 40.0	N2	
Treating Pressure Summary, psi					Breakdown Fluid			
Maximum 3000	Final 1100	Average 200	Bump Plug to 1100	Breakdown	Type	Volume	Density	
Avg. N2 Percent	Designed Slurry Volume 259.0 bbl		Displacement 292.6 bbl	Mix Water Temp 65 degF	Cement Circulated to Surface? <input type="checkbox"/>	Volume		
					Washed Thru Perfs <input type="checkbox"/>	To		
Customer or Authorized Representative JOE HONEYCUT			Schlumberger Supervisor JEFF PATTERSON			Circulation Lost <input type="checkbox"/>	Job Completed <input checked="" type="checkbox"/>	
						-	-	