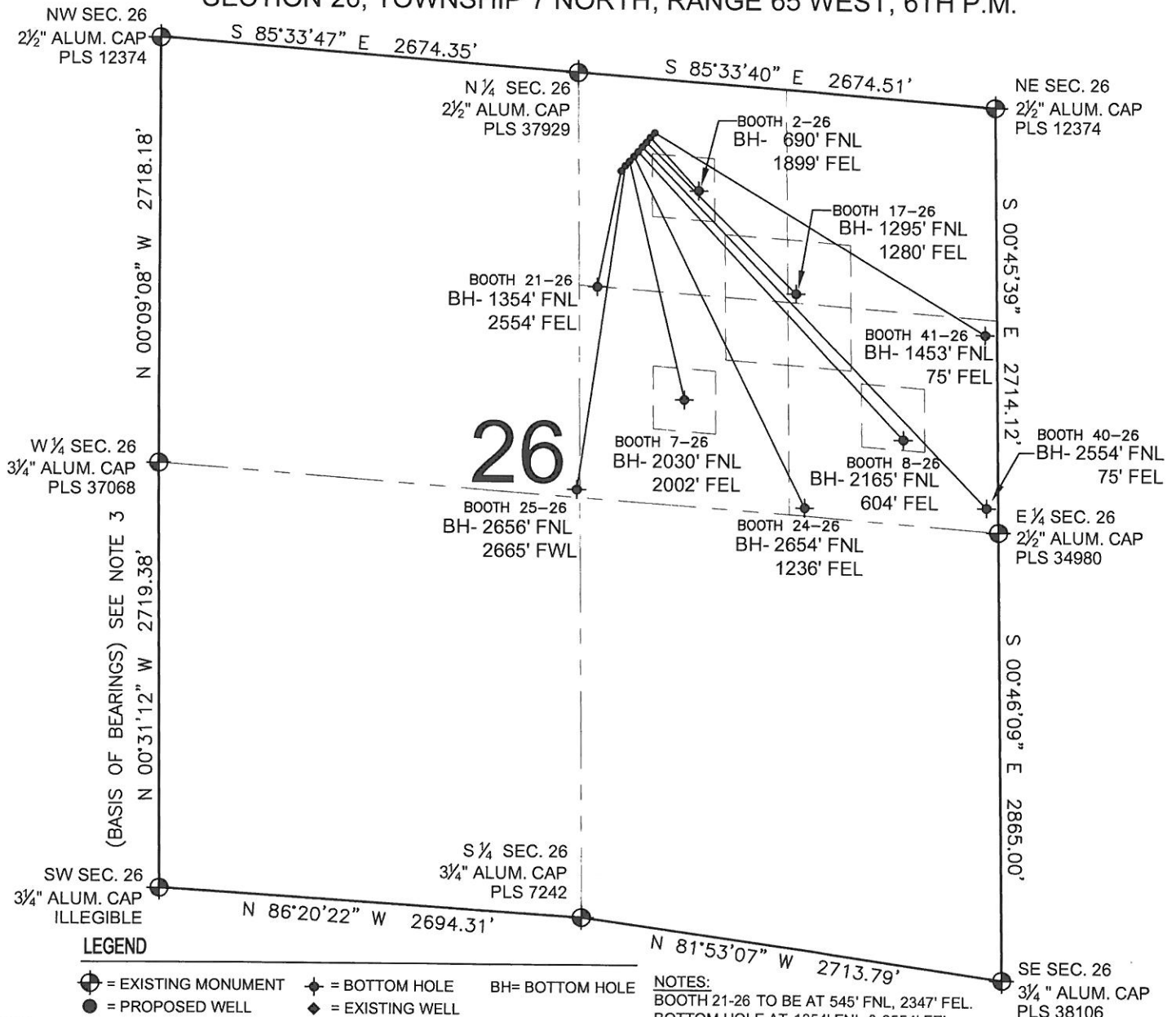


PAD DRAWING: BOOTH 9 PAD

SECTION 26, TOWNSHIP 7 NORTH, RANGE 65 WEST, 6TH P.M.



NOTES:

1. THIS FIELD SURVEY CONFORMS TO THE MINIMUM STANDARDS SET BY THE C.O.G.C.C., RULE NO. 215
2. HORIZONTAL POSITIONS AND ORTHOMETRIC ELEVATIONS SHOWN AT THE WELL HEAD, ARE BASED ON GPS-RTK POSITIONS DERIVED FROM MINIMUM 2-HOUR STATIC OBSERVATIONS CORRECTED BY THE NATIONAL GEODETIC SURVEY ONLINE POSITIONING USER SERVICE, O.P.U.S. DATUM: HORIZONTAL = NAD83/2007, VERTICAL = NAVD88
3. THE BASIS OF BEARINGS ARE STATE PLANE COORDINATE SYSTEM GRID BEARINGS SHOWN HEREON BETWEEN THE DESCRIBED THE MONUMENTS SHOWN HEREON.
4. GRID DISTANCES ARE SHOWN, AS MEASURED IN THE FIELD, WITH TIES TO WELLS MEASURED PERPENDICULAR TO SECTION LINES.

NOTES:

BOOTH 21-26 TO BE AT 545' FNL, 2347' FEL.
 BOTTOM HOLE AT 1354' FNL & 2554' FEL.
 BOOTH 25-26 TO BE AT 532' FNL, 2336' FEL.
 BOTTOM HOLE AT 2656' FNL & 2665' FWL.
 BOOTH 7-26 TO BE AT 518' FNL, 2326' FEL.
 BOTTOM HOLE AT 2030' FNL & 2002' FEL.
 BOOTH 24-26 TO BE AT 505' FNL, 2316' FEL.
 BOTTOM HOLE AT 2654' FNL & 1236' FEL.
 BOOTH 8-26 TO BE AT 492' FNL, 2306' FEL.
 BOTTOM HOLE AT 2165' FNL & 604' FEL.
 BOOTH 40-26 TO BE AT 479' FNL, 2295' FEL.
 BOTTOM HOLE AT 2554' FNL & 75' FEL.
 BOOTH 17-26 TO BE AT 466' FNL, 2285' FEL.
 BOTTOM HOLE AT 1295' FNL & 1280' FEL.
 BOOTH 2-26 TO BE AT 453' FNL, 2275' FEL.
 BOTTOM HOLE AT 690' FNL & 1899' FEL.
 BOOTH 41-26 TO BE AT 439' FNL, 2265' FEL.
 BOTTOM HOLE AT 1453' FNL & 75' FEL.

PREPARED BY:



BAYSWATER EXPLORATION & PRODUCTION, LLC

FIELD DATE: 03-20-12	PAD NAME: BOOTH 9 PAD
DRAWING DATE: 05-23-12	SURFACE LOCATION: WELD COUNTY, COLORADO
BY: KAG	REV: SMF
NW 1/4 NE 1/4, SEC. 26, T7N, R65W, 6TH P.M.	

