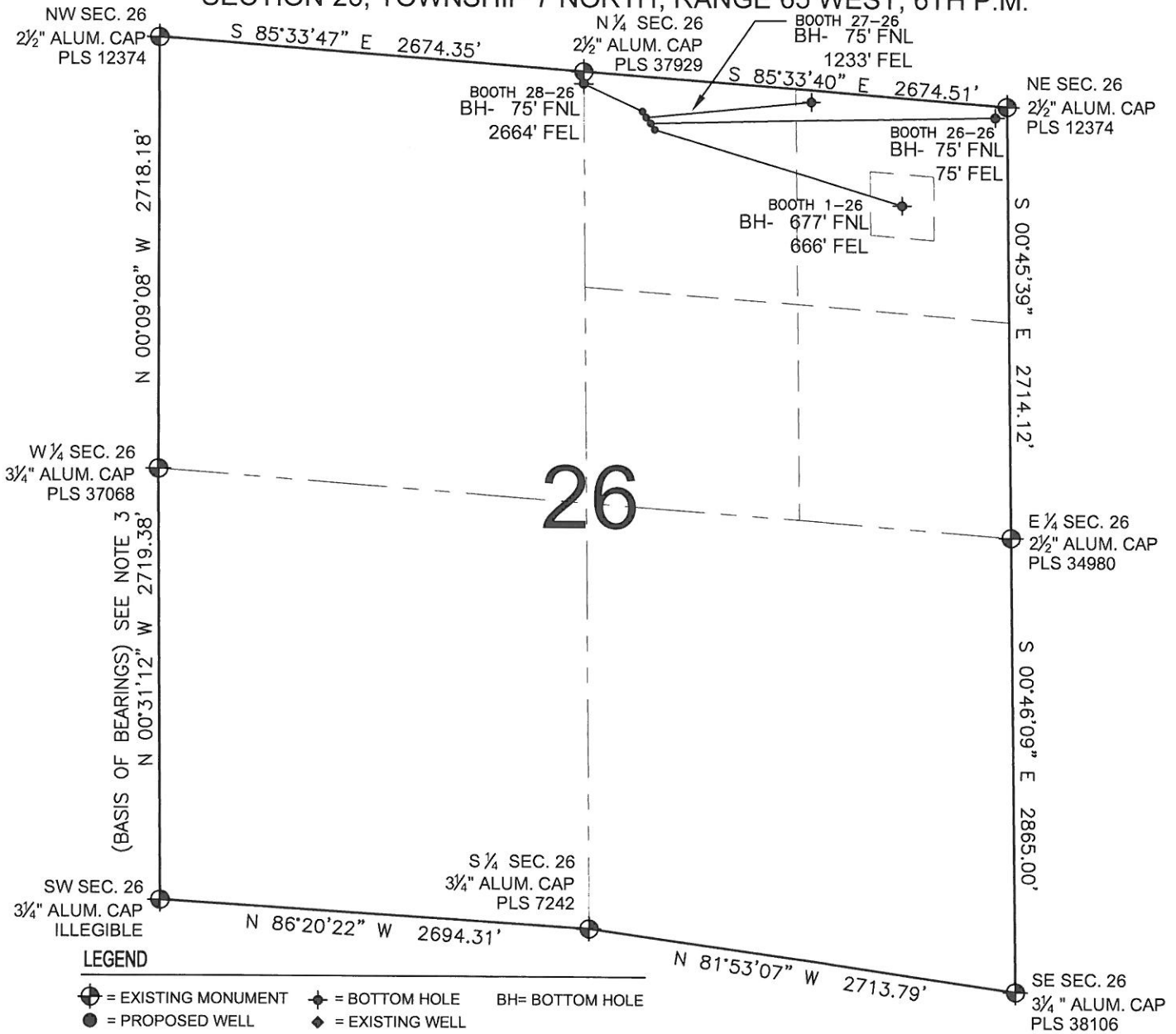


# PAD DRAWING: BOOTH 4 PAD

## SECTION 26, TOWNSHIP 7 NORTH, RANGE 65 WEST, 6TH P.M.



**LEGEND**

- ⊕ = EXISTING MONUMENT      ⊕ = BOTTOM HOLE      BH= BOTTOM HOLE
- = PROPOSED WELL        ◆ = EXISTING WELL

**NOTES:**

1. THIS FIELD SURVEY CONFORMS TO THE MINIMUM STANDARDS SET BY THE C.O.G.C.C., RULE NO. 215
2. HORIZONTAL POSITIONS AND ORTHOMETRIC ELEVATIONS SHOWN AT THE WELL HEAD, ARE BASED ON GPS-RTK POSITIONS DERIVED FROM MINIMUM 2-HOUR STATIC OBSERVATIONS CORRECTED BY THE NATIONAL GEODETIC SURVEY ONLINE POSITIONING USER SERVICE, O.P.U.S. DATUM: HORIZONTAL = NAD83/2007, VERTICAL = NAVD88
3. THE BASIS OF BEARINGS ARE STATE PLANE COORDINATE SYSTEM GRID BEARINGS SHOWN HEREON BETWEEN THE DESCRIBED THE MONUMENTS SHOWN HEREON.
4. GRID DISTANCES ARE SHOWN, AS MEASURED IN THE FIELD, WITH TIES TO WELLS MEASURED PERPENDICULAR TO SECTION LINES.

**NOTES:**

- BOOTH 28-26 TO BE AT 242' FNL, 2285' FEL.
- BOTTOM HOLE AT 75' FNL & 2664' FEL.
- BOOTH 27-26 TO BE AT 255' FNL, 2275' FEL.
- BOTTOM HOLE AT 75' FNL & 1233' FEL.
- BOOTH 26-26 TO BE AT 267' FNL, 2266' FEL.
- BOTTOM HOLE AT 75' FNL & 75' FEL.
- BOOTH 1-26 TO BE AT 279' FNL, 2257' FEL.
- BOTTOM HOLE AT 677' FNL & 666' FEL.

PREPARED BY:



BAYSWATER EXPLORATION & PRODUCTION, LLC

FIELD DATE: 03-20-12	PAD NAME: BOOTH 4 PAD	
DRAWING DATE: 05-23-12	SURFACE LOCATION: WELD COUNTY, COLORADO	
BY: KAG	REV: SMF	NW 1/4 NE 1/4, SEC. 26, T7N, R65W, 6TH P.M.

