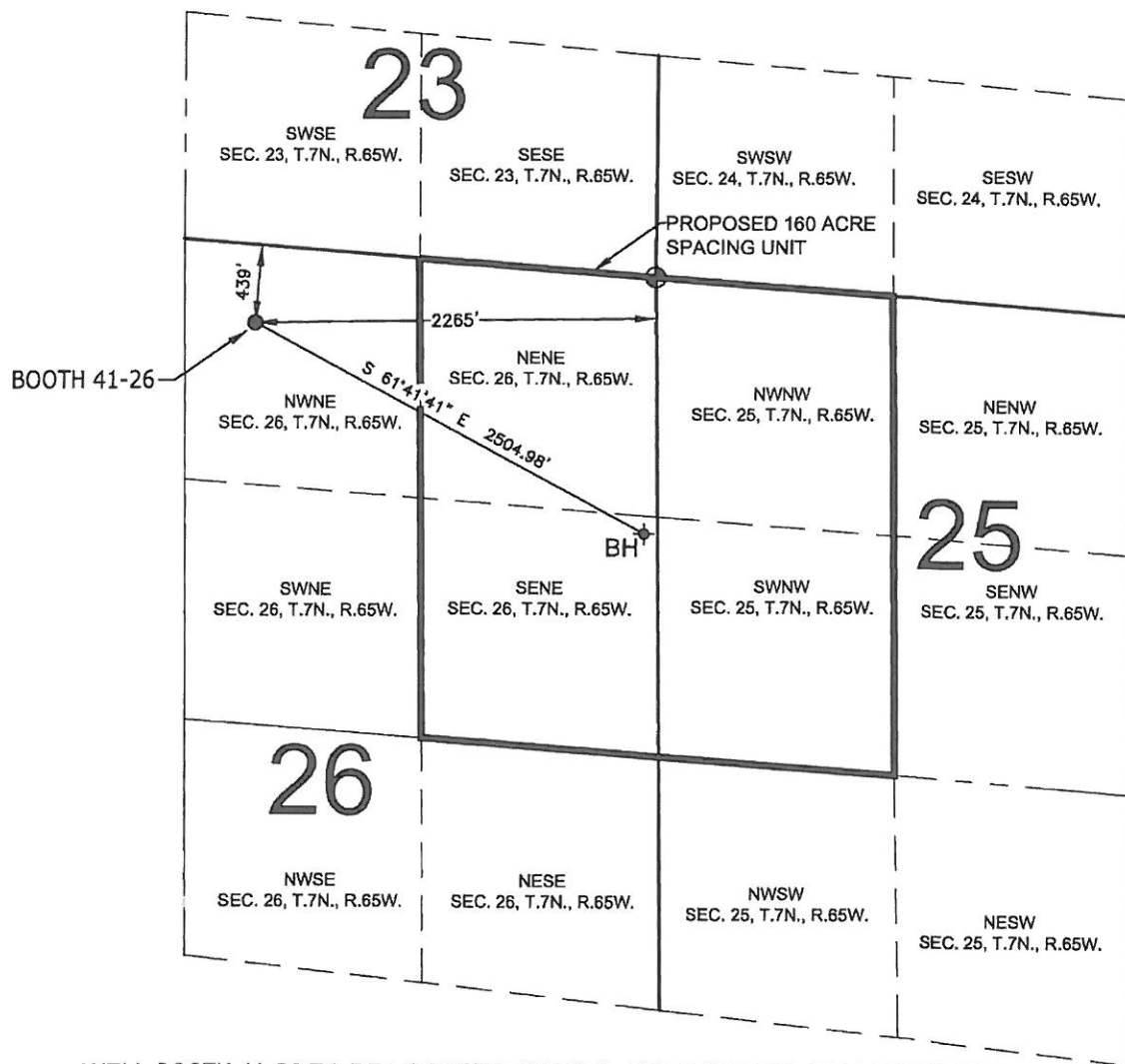


# PROPOSED 318 Ae SPACING UNIT

SECTION 26, TOWNSHIP 7 NORTH, RANGE 65 WEST, 6TH P.M.



WELL BOOTH 41-26 TO BE LOCATED 439' FNL AND 2,265' FEL, T7N, R65W, SEC. 26

SURFACE LOCATION

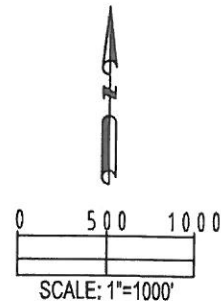
LATITUDE= 40.551893°  
LONGITUDE= 104.628714°

BOTTOM HOLE LOCATION

LATITUDE= 40.548373°  
LONGITUDE= 104.620820°

LEGEND

- = EXISTING MONUMENT   
 = BOTTOM HOLE   
 BH = BOTTOM HOLE  
 = PROPOSED WELL   
 = EXISTING WELL



PREPARED BY:



FIELD DATE:  
03-20-12

DRAWING DATE:  
07-26-12

BY:  
CLM

SURFACE LOCATION

NW 1/4 NE 1/4,  
SEC. 26, T7N, R65W

WELD COUNTY, COLORADO