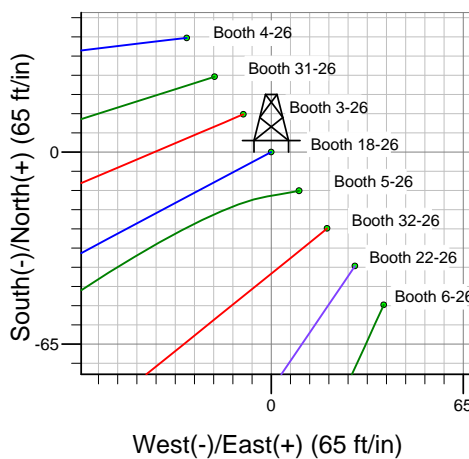
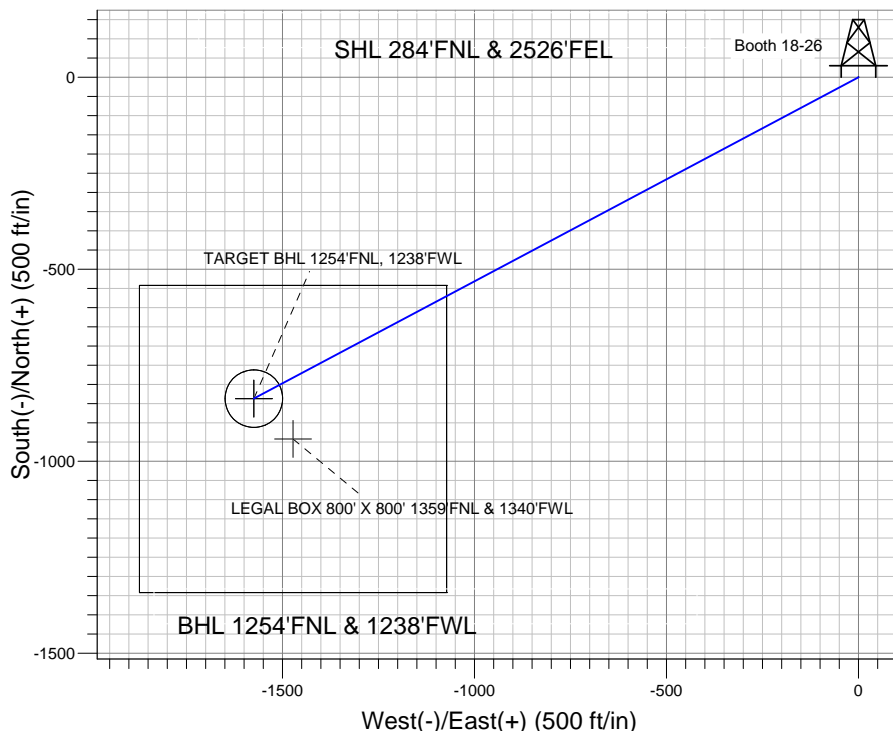
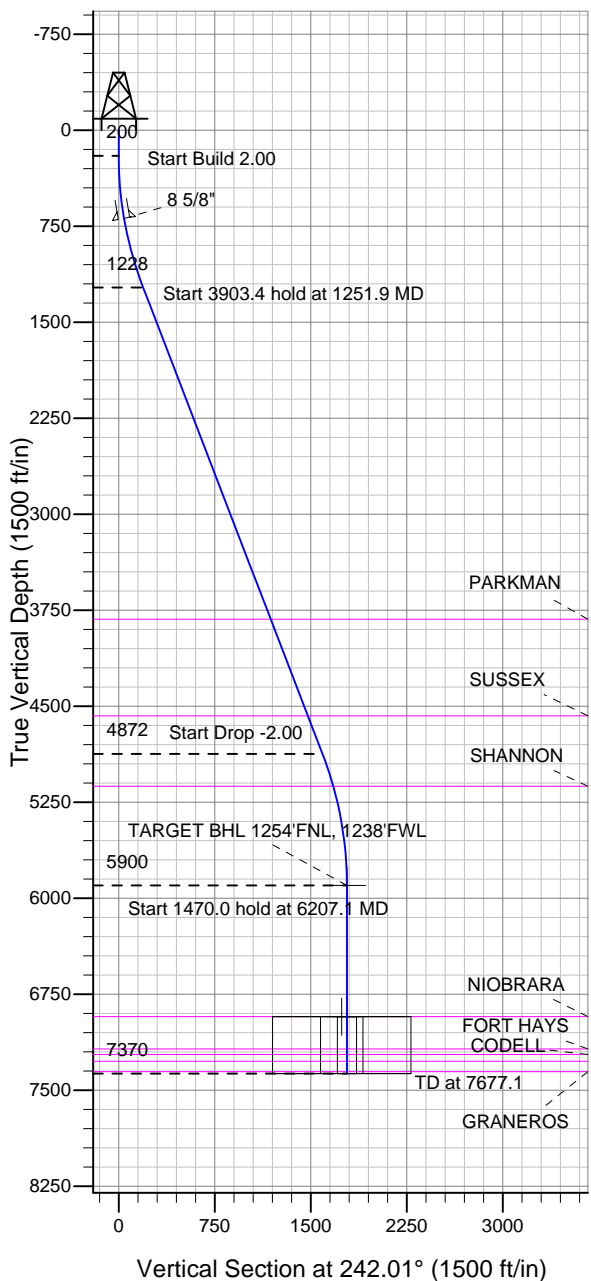


Well Name: Booth 18-26

Surface Location: Booth 8 Pad Sec.26-T7N-R65W
 North American Datum 1983 US State Plane 1983 Colorado Northern Zone
 Ground Elevation: 4893.0
 +N/-S +E/-W Northing Easting Latitude Longitude Slot
 0.0 0.0 1445189.15 3241851.49 40.552186 -104.629657
 Original Well Elev WELL @ 4909.0ft (Original Well Elev)

BAYSWATER EXPLORATION & PRODUCTION



Booth 8 Pad Sec.26-T7N-R65W
 Booth 18-26
 Plan #1 (5-22-12)
 9:05, May 25 2012



Azimuths to True North
 Magnetic North: 8.68°

Magnetic Field
 Strength: 53125.2snT
 Dip Angle: 67.16°
 Date: 5/25/2012
 Model: IGRF2010

WELLBORE TARGET DETAILS (LAT/LONG)

Name	TVD	+N/-S	+E/-W	Latitude	Longitude	Shape
TARGET BHL 1254'FNL, 1238'FWL	5900.0	-836.8	-1574.6	40.549889	-104.635323	Point
LEGAL BOX 800' X 800' 1359'FNL & 1340'FWL	6925.0	-941.8	-1472.6	40.549601	-104.634956	Rectangle (Sides: L800.0 W800.0)
TARGET CIRCLE 1254'FNL & 1238'FWL	6925.0	-836.8	-1574.6	40.549889	-104.635323	Circle (Radius: 75.0)

SECTION DETAILS

Sec	MD	Inc	Azi	TVD	+N/-S	+E/-W	DLeg	TFace	VSec	Target
1	0.0	0.00	0.00	0.0	0.0	0.0	0.00	0.00	0.0	
2	200.0	0.00	0.00	200.0	0.0	0.0	0.00	0.00	0.0	
3	1251.9	21.04	242.01	1228.4	-89.6	-168.6	2.00	242.01	191.0	
4	5155.3	21.04	242.01	4871.6	-747.2	-1406.0	0.00	0.00	1592.2	
5	6207.1	0.00	0.00	5900.0	-836.8	-1574.6	2.00	180.00	1783.1	TARGET BHL 1254'FNL, 1238'FWL
6	7677.1	0.00	0.00	7370.0	-836.8	-1574.6	0.00	0.00	1783.1	



Directional

BAYSWATER EXPLORATION & PRODUCTION

SEC.26-T7N-R65W

Booth 8 Pad Sec.26-T7N-R65W

Booth 18-26

Wellbore #1

Plan: Plan #1 (5-22-12)

Standard Planning Report

25 May, 2012

Database:	Landmark	Local Co-ordinate Reference:	Well Booth 18-26
Company:	BAYSWATER EXPLORATION & PRODUCTION	TVD Reference:	WELL @ 4909.0ft (Original Well Elev)
Project:	SEC.26-T7N-R65W	MD Reference:	WELL @ 4909.0ft (Original Well Elev)
Site:	Booth 8 Pad Sec.26-T7N-R65W	North Reference:	True
Well:	Booth 18-26	Survey Calculation Method:	Minimum Curvature
Wellbore:	Wellbore #1		
Design:	Plan #1 (5-22-12)		

Project	SEC.26-T7N-R65W, Weld County, CO		
Map System:	US State Plane 1983	System Datum:	Mean Sea Level
Geo Datum:	North American Datum 1983		Using Well Reference Point
Map Zone:	Colorado Northern Zone		Using geodetic scale factor

Site	Booth 8 Pad Sec.26-T7N-R65W		
Site Position:		Northing:	1,445,227.50 ft
From:	Lat/Long	Easting:	3,241,822.49 ft
Position Uncertainty:	0.0 ft	Slot Radius:	"
		Latitude:	40.552292
		Longitude:	-104.629760
		Grid Convergence:	0.56 °

Well	Booth 18-26		
Well Position	+N/-S	-38.6 ft	Northing:
	+E/-W	28.6 ft	Easting:
Position Uncertainty		0.0 ft	Wellhead Elevation:
			ft
			Latitude:
			40.552186
			Longitude:
			-104.629657
			Ground Level:
			4,893.0 ft

Wellbore	Wellbore #1				
Magnetics	Model Name	Sample Date	Declination (°)	Dip Angle (°)	Field Strength (nT)
	IGRF2010	5/22/2012	8.68	67.16	53,126

Design	Plan #1 (5-22-12)			
Audit Notes:				
Version:	Phase:	PROTOTYPE	Tie On Depth:	0.0
Vertical Section:	Depth From (TVD) (ft)	+N/-S (ft)	+E/-W (ft)	Direction (°)
	0.0	0.0	0.0	242.01

Plan Sections										
Measured Depth (ft)	Inclination (°)	Azimuth (°)	Vertical Depth (ft)	+N/-S (ft)	+E/-W (ft)	Dogleg Rate (°/100ft)	Build Rate (°/100ft)	Turn Rate (°/100ft)	TFO (°)	Target
0.0	0.00	0.00	0.0	0.0	0.0	0.00	0.00	0.00	0.00	
200.0	0.00	0.00	200.0	0.0	0.0	0.00	0.00	0.00	0.00	
1,251.9	21.04	242.01	1,228.4	-89.6	-168.6	2.00	2.00	0.00	242.01	
5,155.3	21.04	242.01	4,871.6	-747.2	-1,406.0	0.00	0.00	0.00	0.00	
6,207.1	0.00	0.00	5,900.0	-836.8	-1,574.6	2.00	-2.00	0.00	180.00	TARGET BHL 1254
7,677.1	0.00	0.00	7,370.0	-836.8	-1,574.6	0.00	0.00	0.00	0.00	

Database:	Landmark	Local Co-ordinate Reference:	Well Booth 18-26
Company:	BAYSWATER EXPLORATION & PRODUCTION	TVD Reference:	WELL @ 4909.0ft (Original Well Elev)
Project:	SEC.26-T7N-R65W	MD Reference:	WELL @ 4909.0ft (Original Well Elev)
Site:	Booth 8 Pad Sec.26-T7N-R65W	North Reference:	True
Well:	Booth 18-26	Survey Calculation Method:	Minimum Curvature
Wellbore:	Wellbore #1		
Design:	Plan #1 (5-22-12)		

Planned Survey

Measured Depth (ft)	Inclination (°)	Azimuth (°)	Vertical Depth (ft)	+N/-S (ft)	+E/-W (ft)	Vertical Section (ft)	Dogleg Rate (°/100ft)	Build Rate (°/100ft)	Turn Rate (°/100ft)
0.0	0.00	0.00	0.0	0.0	0.0	0.0	0.00	0.00	0.00
40.0	0.00	0.00	40.0	0.0	0.0	0.0	0.00	0.00	0.00
80.0	0.00	0.00	80.0	0.0	0.0	0.0	0.00	0.00	0.00
120.0	0.00	0.00	120.0	0.0	0.0	0.0	0.00	0.00	0.00
160.0	0.00	0.00	160.0	0.0	0.0	0.0	0.00	0.00	0.00
200.0	0.00	0.00	200.0	0.0	0.0	0.0	0.00	0.00	0.00
240.0	0.80	242.01	240.0	-0.1	-0.2	0.3	2.00	2.00	0.00
280.0	1.60	242.01	280.0	-0.5	-1.0	1.1	2.00	2.00	0.00
320.0	2.40	242.01	320.0	-1.2	-2.2	2.5	2.00	2.00	0.00
360.0	3.20	242.01	359.9	-2.1	-3.9	4.5	2.00	2.00	0.00
400.0	4.00	242.01	399.8	-3.3	-6.2	7.0	2.00	2.00	0.00
440.0	4.80	242.01	439.7	-4.7	-8.9	10.0	2.00	2.00	0.00
480.0	5.60	242.01	479.6	-6.4	-12.1	13.7	2.00	2.00	0.00
520.0	6.40	242.01	519.3	-8.4	-15.8	17.9	2.00	2.00	0.00
560.0	7.20	242.01	559.1	-10.6	-19.9	22.6	2.00	2.00	0.00
600.0	8.00	242.01	598.7	-13.1	-24.6	27.9	2.00	2.00	0.00
640.0	8.80	242.01	638.3	-15.8	-29.8	33.7	2.00	2.00	0.00
680.0	9.60	242.01	677.8	-18.8	-35.4	40.1	2.00	2.00	0.00
692.4	9.85	242.01	690.0	-19.8	-37.3	42.2	2.00	2.00	0.00
8 5/8"									
720.0	10.40	242.01	717.1	-22.1	-41.6	47.1	2.00	2.00	0.00
760.0	11.20	242.01	756.4	-25.6	-48.2	54.6	2.00	2.00	0.00
800.0	12.00	242.01	795.6	-29.4	-55.3	62.6	2.00	2.00	0.00
840.0	12.80	242.01	834.7	-33.4	-62.9	71.2	2.00	2.00	0.00
880.0	13.60	242.01	873.6	-37.7	-70.9	80.3	2.00	2.00	0.00
920.0	14.40	242.01	912.4	-42.2	-79.5	90.0	2.00	2.00	0.00
960.0	15.20	242.01	951.1	-47.0	-88.5	100.2	2.00	2.00	0.00
1,000.0	16.00	242.01	989.6	-52.1	-98.0	111.0	2.00	2.00	0.00
1,040.0	16.80	242.01	1,028.0	-57.4	-108.0	122.3	2.00	2.00	0.00
1,080.0	17.60	242.01	1,066.2	-62.9	-118.4	134.1	2.00	2.00	0.00
1,120.0	18.40	242.01	1,104.3	-68.7	-129.3	146.5	2.00	2.00	0.00
1,160.0	19.20	242.01	1,142.1	-74.8	-140.7	159.3	2.00	2.00	0.00
1,200.0	20.00	242.01	1,179.8	-81.1	-152.6	172.8	2.00	2.00	0.00
1,240.0	20.80	242.01	1,217.3	-87.6	-164.9	186.7	2.00	2.00	0.00
1,251.9	21.04	242.01	1,228.4	-89.6	-168.6	191.0	2.00	2.00	0.00
1,280.0	21.04	242.01	1,254.6	-94.3	-177.5	201.0	0.00	0.00	0.00
1,320.0	21.04	242.01	1,292.0	-101.1	-190.2	215.4	0.00	0.00	0.00
1,360.0	21.04	242.01	1,329.3	-107.8	-202.9	229.8	0.00	0.00	0.00
1,400.0	21.04	242.01	1,366.7	-114.6	-215.6	244.1	0.00	0.00	0.00
1,440.0	21.04	242.01	1,404.0	-121.3	-228.3	258.5	0.00	0.00	0.00
1,480.0	21.04	242.01	1,441.3	-128.0	-240.9	272.8	0.00	0.00	0.00
1,520.0	21.04	242.01	1,478.7	-134.8	-253.6	287.2	0.00	0.00	0.00
1,560.0	21.04	242.01	1,516.0	-141.5	-266.3	301.6	0.00	0.00	0.00
1,600.0	21.04	242.01	1,553.3	-148.3	-279.0	315.9	0.00	0.00	0.00
1,640.0	21.04	242.01	1,590.7	-155.0	-291.7	330.3	0.00	0.00	0.00
1,680.0	21.04	242.01	1,628.0	-161.7	-304.3	344.6	0.00	0.00	0.00
1,720.0	21.04	242.01	1,665.3	-168.5	-317.0	359.0	0.00	0.00	0.00
1,760.0	21.04	242.01	1,702.7	-175.2	-329.7	373.4	0.00	0.00	0.00
1,800.0	21.04	242.01	1,740.0	-181.9	-342.4	387.7	0.00	0.00	0.00
1,840.0	21.04	242.01	1,777.3	-188.7	-355.1	402.1	0.00	0.00	0.00
1,880.0	21.04	242.01	1,814.7	-195.4	-367.7	416.4	0.00	0.00	0.00
1,920.0	21.04	242.01	1,852.0	-202.2	-380.4	430.8	0.00	0.00	0.00
1,960.0	21.04	242.01	1,889.3	-208.9	-393.1	445.2	0.00	0.00	0.00

Database:	Landmark	Local Co-ordinate Reference:	Well Booth 18-26
Company:	BAYSWATER EXPLORATION & PRODUCTION	TVD Reference:	WELL @ 4909.0ft (Original Well Elev)
Project:	SEC.26-T7N-R65W	MD Reference:	WELL @ 4909.0ft (Original Well Elev)
Site:	Booth 8 Pad Sec.26-T7N-R65W	North Reference:	True
Well:	Booth 18-26	Survey Calculation Method:	Minimum Curvature
Wellbore:	Wellbore #1		
Design:	Plan #1 (5-22-12)		

Planned Survey									
Measured Depth (ft)	Inclination (°)	Azimuth (°)	Vertical Depth (ft)	+N/-S (ft)	+E/-W (ft)	Vertical Section (ft)	Dogleg Rate (°/100ft)	Build Rate (°/100ft)	Turn Rate (°/100ft)
2,000.0	21.04	242.01	1,926.7	-215.6	-405.8	459.5	0.00	0.00	0.00
2,040.0	21.04	242.01	1,964.0	-222.4	-418.5	473.9	0.00	0.00	0.00
2,080.0	21.04	242.01	2,001.3	-229.1	-431.1	488.2	0.00	0.00	0.00
2,120.0	21.04	242.01	2,038.7	-235.9	-443.8	502.6	0.00	0.00	0.00
2,160.0	21.04	242.01	2,076.0	-242.6	-456.5	516.9	0.00	0.00	0.00
2,200.0	21.04	242.01	2,113.3	-249.3	-469.2	531.3	0.00	0.00	0.00
2,240.0	21.04	242.01	2,150.7	-256.1	-481.9	545.7	0.00	0.00	0.00
2,280.0	21.04	242.01	2,188.0	-262.8	-494.5	560.0	0.00	0.00	0.00
2,320.0	21.04	242.01	2,225.3	-269.5	-507.2	574.4	0.00	0.00	0.00
2,360.0	21.04	242.01	2,262.7	-276.3	-519.9	588.7	0.00	0.00	0.00
2,400.0	21.04	242.01	2,300.0	-283.0	-532.6	603.1	0.00	0.00	0.00
2,440.0	21.04	242.01	2,337.3	-289.8	-545.3	617.5	0.00	0.00	0.00
2,480.0	21.04	242.01	2,374.7	-296.5	-557.9	631.8	0.00	0.00	0.00
2,520.0	21.04	242.01	2,412.0	-303.2	-570.6	646.2	0.00	0.00	0.00
2,560.0	21.04	242.01	2,449.3	-310.0	-583.3	660.5	0.00	0.00	0.00
2,600.0	21.04	242.01	2,486.7	-316.7	-596.0	674.9	0.00	0.00	0.00
2,640.0	21.04	242.01	2,524.0	-323.5	-608.7	689.3	0.00	0.00	0.00
2,680.0	21.04	242.01	2,561.3	-330.2	-621.3	703.6	0.00	0.00	0.00
2,720.0	21.04	242.01	2,598.7	-336.9	-634.0	718.0	0.00	0.00	0.00
2,760.0	21.04	242.01	2,636.0	-343.7	-646.7	732.3	0.00	0.00	0.00
2,800.0	21.04	242.01	2,673.3	-350.4	-659.4	746.7	0.00	0.00	0.00
2,840.0	21.04	242.01	2,710.7	-357.1	-672.1	761.1	0.00	0.00	0.00
2,880.0	21.04	242.01	2,748.0	-363.9	-684.7	775.4	0.00	0.00	0.00
2,920.0	21.04	242.01	2,785.3	-370.6	-697.4	789.8	0.00	0.00	0.00
2,960.0	21.04	242.01	2,822.7	-377.4	-710.1	804.1	0.00	0.00	0.00
3,000.0	21.04	242.01	2,860.0	-384.1	-722.8	818.5	0.00	0.00	0.00
3,040.0	21.04	242.01	2,897.3	-390.8	-735.5	832.9	0.00	0.00	0.00
3,080.0	21.04	242.01	2,934.7	-397.6	-748.1	847.2	0.00	0.00	0.00
3,120.0	21.04	242.01	2,972.0	-404.3	-760.8	861.6	0.00	0.00	0.00
3,160.0	21.04	242.01	3,009.3	-411.1	-773.5	875.9	0.00	0.00	0.00
3,200.0	21.04	242.01	3,046.7	-417.8	-786.2	890.3	0.00	0.00	0.00
3,240.0	21.04	242.01	3,084.0	-424.5	-798.8	904.6	0.00	0.00	0.00
3,280.0	21.04	242.01	3,121.3	-431.3	-811.5	919.0	0.00	0.00	0.00
3,320.0	21.04	242.01	3,158.7	-438.0	-824.2	933.4	0.00	0.00	0.00
3,360.0	21.04	242.01	3,196.0	-444.7	-836.9	947.7	0.00	0.00	0.00
3,400.0	21.04	242.01	3,233.3	-451.5	-849.6	962.1	0.00	0.00	0.00
3,440.0	21.04	242.01	3,270.7	-458.2	-862.2	976.4	0.00	0.00	0.00
3,480.0	21.04	242.01	3,308.0	-465.0	-874.9	990.8	0.00	0.00	0.00
3,520.0	21.04	242.01	3,345.3	-471.7	-887.6	1,005.2	0.00	0.00	0.00
3,560.0	21.04	242.01	3,382.7	-478.4	-900.3	1,019.5	0.00	0.00	0.00
3,600.0	21.04	242.01	3,420.0	-485.2	-913.0	1,033.9	0.00	0.00	0.00
3,640.0	21.04	242.01	3,457.3	-491.9	-925.6	1,048.2	0.00	0.00	0.00
3,680.0	21.04	242.01	3,494.7	-498.7	-938.3	1,062.6	0.00	0.00	0.00
3,720.0	21.04	242.01	3,532.0	-505.4	-951.0	1,077.0	0.00	0.00	0.00
3,760.0	21.04	242.01	3,569.3	-512.1	-963.7	1,091.3	0.00	0.00	0.00
3,800.0	21.04	242.01	3,606.7	-518.9	-976.4	1,105.7	0.00	0.00	0.00
3,840.0	21.04	242.01	3,644.0	-525.6	-989.0	1,120.0	0.00	0.00	0.00
3,880.0	21.04	242.01	3,681.3	-532.3	-1,001.7	1,134.4	0.00	0.00	0.00
3,920.0	21.04	242.01	3,718.7	-539.1	-1,014.4	1,148.8	0.00	0.00	0.00
3,960.0	21.04	242.01	3,756.0	-545.8	-1,027.1	1,163.1	0.00	0.00	0.00
4,000.0	21.04	242.01	3,793.3	-552.6	-1,039.8	1,177.5	0.00	0.00	0.00
4,028.6	21.04	242.01	3,820.0	-557.4	-1,048.8	1,187.7	0.00	0.00	0.00
PARKMAN									

Database:	Landmark	Local Co-ordinate Reference:	Well Booth 18-26
Company:	BAYSWATER EXPLORATION & PRODUCTION	TVD Reference:	WELL @ 4909.0ft (Original Well Elev)
Project:	SEC.26-T7N-R65W	MD Reference:	WELL @ 4909.0ft (Original Well Elev)
Site:	Booth 8 Pad Sec.26-T7N-R65W	North Reference:	True
Well:	Booth 18-26	Survey Calculation Method:	Minimum Curvature
Wellbore:	Wellbore #1		
Design:	Plan #1 (5-22-12)		

Planned Survey									
Measured Depth (ft)	Inclination (°)	Azimuth (°)	Vertical Depth (ft)	+N-S (ft)	+E-W (ft)	Vertical Section (ft)	Dogleg Rate (°/100ft)	Build Rate (°/100ft)	Turn Rate (°/100ft)
4,040.0	21.04	242.01	3,830.7	-559.3	-1,052.4	1,191.8	0.00	0.00	0.00
4,080.0	21.04	242.01	3,868.0	-566.0	-1,065.1	1,206.2	0.00	0.00	0.00
4,120.0	21.04	242.01	3,905.3	-572.8	-1,077.8	1,220.6	0.00	0.00	0.00
4,160.0	21.04	242.01	3,942.7	-579.5	-1,090.5	1,234.9	0.00	0.00	0.00
4,200.0	21.04	242.01	3,980.0	-586.3	-1,103.2	1,249.3	0.00	0.00	0.00
4,240.0	21.04	242.01	4,017.4	-593.0	-1,115.8	1,263.6	0.00	0.00	0.00
4,280.0	21.04	242.01	4,054.7	-599.7	-1,128.5	1,278.0	0.00	0.00	0.00
4,320.0	21.04	242.01	4,092.0	-606.5	-1,141.2	1,292.3	0.00	0.00	0.00
4,360.0	21.04	242.01	4,129.4	-613.2	-1,153.9	1,306.7	0.00	0.00	0.00
4,400.0	21.04	242.01	4,166.7	-619.9	-1,166.6	1,321.1	0.00	0.00	0.00
4,440.0	21.04	242.01	4,204.0	-626.7	-1,179.2	1,335.4	0.00	0.00	0.00
4,480.0	21.04	242.01	4,241.4	-633.4	-1,191.9	1,349.8	0.00	0.00	0.00
4,520.0	21.04	242.01	4,278.7	-640.2	-1,204.6	1,364.1	0.00	0.00	0.00
4,560.0	21.04	242.01	4,316.0	-646.9	-1,217.3	1,378.5	0.00	0.00	0.00
4,600.0	21.04	242.01	4,353.4	-653.6	-1,230.0	1,392.9	0.00	0.00	0.00
4,640.0	21.04	242.01	4,390.7	-660.4	-1,242.6	1,407.2	0.00	0.00	0.00
4,680.0	21.04	242.01	4,428.0	-667.1	-1,255.3	1,421.6	0.00	0.00	0.00
4,720.0	21.04	242.01	4,465.4	-673.9	-1,268.0	1,435.9	0.00	0.00	0.00
4,760.0	21.04	242.01	4,502.7	-680.6	-1,280.7	1,450.3	0.00	0.00	0.00
4,800.0	21.04	242.01	4,540.0	-687.3	-1,293.4	1,464.7	0.00	0.00	0.00
4,837.5	21.04	242.01	4,575.0	-693.6	-1,305.2	1,478.1	0.00	0.00	0.00
SUSSEX									
4,840.0	21.04	242.01	4,577.4	-694.1	-1,306.0	1,479.0	0.00	0.00	0.00
4,880.0	21.04	242.01	4,614.7	-700.8	-1,318.7	1,493.4	0.00	0.00	0.00
4,920.0	21.04	242.01	4,652.0	-707.5	-1,331.4	1,507.7	0.00	0.00	0.00
4,960.0	21.04	242.01	4,689.4	-714.3	-1,344.1	1,522.1	0.00	0.00	0.00
5,000.0	21.04	242.01	4,726.7	-721.0	-1,356.8	1,536.5	0.00	0.00	0.00
5,040.0	21.04	242.01	4,764.0	-727.8	-1,369.4	1,550.8	0.00	0.00	0.00
5,080.0	21.04	242.01	4,801.4	-734.5	-1,382.1	1,565.2	0.00	0.00	0.00
5,120.0	21.04	242.01	4,838.7	-741.2	-1,394.8	1,579.5	0.00	0.00	0.00
5,155.3	21.04	242.01	4,871.6	-747.2	-1,406.0	1,592.2	0.00	0.00	0.00
5,160.0	20.94	242.01	4,876.0	-748.0	-1,407.5	1,593.9	2.00	-2.00	0.00
5,200.0	20.14	242.01	4,913.5	-754.6	-1,419.9	1,607.9	2.00	-2.00	0.00
5,240.0	19.34	242.01	4,951.1	-760.9	-1,431.8	1,621.4	2.00	-2.00	0.00
5,280.0	18.54	242.01	4,989.0	-767.0	-1,443.3	1,634.4	2.00	-2.00	0.00
5,320.0	17.74	242.01	5,027.0	-772.8	-1,454.3	1,646.9	2.00	-2.00	0.00
5,360.0	16.94	242.01	5,065.2	-778.4	-1,464.8	1,658.8	2.00	-2.00	0.00
5,400.0	16.14	242.01	5,103.5	-783.8	-1,474.9	1,670.2	2.00	-2.00	0.00
5,422.4	15.70	242.01	5,125.0	-786.7	-1,480.3	1,676.3	2.00	-2.00	0.00
SHANNON									
5,440.0	15.34	242.01	5,142.0	-788.9	-1,484.4	1,681.0	2.00	-2.00	0.00
5,480.0	14.54	242.01	5,180.7	-793.7	-1,493.5	1,691.4	2.00	-2.00	0.00
5,520.0	13.74	242.01	5,219.4	-798.3	-1,502.2	1,701.1	2.00	-2.00	0.00
5,560.0	12.94	242.01	5,258.4	-802.6	-1,510.3	1,710.4	2.00	-2.00	0.00
5,600.0	12.14	242.01	5,297.4	-806.7	-1,518.0	1,719.0	2.00	-2.00	0.00
5,640.0	11.34	242.01	5,336.6	-810.5	-1,525.2	1,727.2	2.00	-2.00	0.00
5,680.0	10.54	242.01	5,375.8	-814.1	-1,531.9	1,734.8	2.00	-2.00	0.00
5,720.0	9.74	242.01	5,415.2	-817.4	-1,538.1	1,741.8	2.00	-2.00	0.00
5,760.0	8.94	242.01	5,454.7	-820.4	-1,543.8	1,748.3	2.00	-2.00	0.00
5,800.0	8.14	242.01	5,494.2	-823.2	-1,549.1	1,754.3	2.00	-2.00	0.00
5,840.0	7.34	242.01	5,533.9	-825.8	-1,553.9	1,759.6	2.00	-2.00	0.00
5,880.0	6.54	242.01	5,573.6	-828.0	-1,558.1	1,764.5	2.00	-2.00	0.00
5,920.0	5.74	242.01	5,613.3	-830.0	-1,561.9	1,768.8	2.00	-2.00	0.00

Database:	Landmark	Local Co-ordinate Reference:	Well Booth 18-26
Company:	BAYSWATER EXPLORATION & PRODUCTION	TVD Reference:	WELL @ 4909.0ft (Original Well Elev)
Project:	SEC.26-T7N-R65W	MD Reference:	WELL @ 4909.0ft (Original Well Elev)
Site:	Booth 8 Pad Sec.26-T7N-R65W	North Reference:	True
Well:	Booth 18-26	Survey Calculation Method:	Minimum Curvature
Wellbore:	Wellbore #1		
Design:	Plan #1 (5-22-12)		

Planned Survey

Measured Depth (ft)	Inclination (°)	Azimuth (°)	Vertical Depth (ft)	+N/-S (ft)	+E/-W (ft)	Vertical Section (ft)	Dogleg Rate (°/100ft)	Build Rate (°/100ft)	Turn Rate (°/100ft)
5,960.0	4.94	242.01	5,653.2	-831.8	-1,565.2	1,772.5	2.00	-2.00	0.00
6,000.0	4.14	242.01	5,693.0	-833.3	-1,568.0	1,775.7	2.00	-2.00	0.00
6,040.0	3.34	242.01	5,733.0	-834.5	-1,570.3	1,778.3	2.00	-2.00	0.00
6,080.0	2.54	242.01	5,772.9	-835.5	-1,572.1	1,780.3	2.00	-2.00	0.00
6,120.0	1.74	242.01	5,812.9	-836.2	-1,573.4	1,781.8	2.00	-2.00	0.00
6,160.0	0.94	242.01	5,852.9	-836.6	-1,574.3	1,782.7	2.00	-2.00	0.00
6,200.0	0.14	242.01	5,892.9	-836.8	-1,574.6	1,783.1	2.00	-2.00	0.00
6,207.1	0.00	0.00	5,900.0	-836.8	-1,574.6	1,783.1	2.00	-2.00	0.00
TARGET BHL 1254'FNL, 1238'FWL									
6,240.0	0.00	0.00	5,932.9	-836.8	-1,574.6	1,783.1	0.00	0.00	0.00
6,280.0	0.00	0.00	5,972.9	-836.8	-1,574.6	1,783.1	0.00	0.00	0.00
6,320.0	0.00	0.00	6,012.9	-836.8	-1,574.6	1,783.1	0.00	0.00	0.00
6,360.0	0.00	0.00	6,052.9	-836.8	-1,574.6	1,783.1	0.00	0.00	0.00
6,400.0	0.00	0.00	6,092.9	-836.8	-1,574.6	1,783.1	0.00	0.00	0.00
6,440.0	0.00	0.00	6,132.9	-836.8	-1,574.6	1,783.1	0.00	0.00	0.00
6,480.0	0.00	0.00	6,172.9	-836.8	-1,574.6	1,783.1	0.00	0.00	0.00
6,520.0	0.00	0.00	6,212.9	-836.8	-1,574.6	1,783.1	0.00	0.00	0.00
6,560.0	0.00	0.00	6,252.9	-836.8	-1,574.6	1,783.1	0.00	0.00	0.00
6,600.0	0.00	0.00	6,292.9	-836.8	-1,574.6	1,783.1	0.00	0.00	0.00
6,640.0	0.00	0.00	6,332.9	-836.8	-1,574.6	1,783.1	0.00	0.00	0.00
6,680.0	0.00	0.00	6,372.9	-836.8	-1,574.6	1,783.1	0.00	0.00	0.00
6,720.0	0.00	0.00	6,412.9	-836.8	-1,574.6	1,783.1	0.00	0.00	0.00
6,760.0	0.00	0.00	6,452.9	-836.8	-1,574.6	1,783.1	0.00	0.00	0.00
6,800.0	0.00	0.00	6,492.9	-836.8	-1,574.6	1,783.1	0.00	0.00	0.00
6,840.0	0.00	0.00	6,532.9	-836.8	-1,574.6	1,783.1	0.00	0.00	0.00
6,880.0	0.00	0.00	6,572.9	-836.8	-1,574.6	1,783.1	0.00	0.00	0.00
6,920.0	0.00	0.00	6,612.9	-836.8	-1,574.6	1,783.1	0.00	0.00	0.00
6,960.0	0.00	0.00	6,652.9	-836.8	-1,574.6	1,783.1	0.00	0.00	0.00
7,000.0	0.00	0.00	6,692.9	-836.8	-1,574.6	1,783.1	0.00	0.00	0.00
7,040.0	0.00	0.00	6,732.9	-836.8	-1,574.6	1,783.1	0.00	0.00	0.00
7,080.0	0.00	0.00	6,772.9	-836.8	-1,574.6	1,783.1	0.00	0.00	0.00
7,120.0	0.00	0.00	6,812.9	-836.8	-1,574.6	1,783.1	0.00	0.00	0.00
7,160.0	0.00	0.00	6,852.9	-836.8	-1,574.6	1,783.1	0.00	0.00	0.00
7,200.0	0.00	0.00	6,892.9	-836.8	-1,574.6	1,783.1	0.00	0.00	0.00
7,232.1	0.00	0.00	6,925.0	-836.8	-1,574.6	1,783.1	0.00	0.00	0.00
NIOBRARA - TARGET CIRCLE 1254'FNL & 1238'FWL - LEGAL BOX 800' X 800' 1359'FNL & 1340'FWL									
7,240.0	0.00	0.00	6,932.9	-836.8	-1,574.6	1,783.1	0.00	0.00	0.00
7,280.0	0.00	0.00	6,972.9	-836.8	-1,574.6	1,783.1	0.00	0.00	0.00
7,320.0	0.00	0.00	7,012.9	-836.8	-1,574.6	1,783.1	0.00	0.00	0.00
7,360.0	0.00	0.00	7,052.9	-836.8	-1,574.6	1,783.1	0.00	0.00	0.00
7,400.0	0.00	0.00	7,092.9	-836.8	-1,574.6	1,783.1	0.00	0.00	0.00
7,440.0	0.00	0.00	7,132.9	-836.8	-1,574.6	1,783.1	0.00	0.00	0.00
7,480.0	0.00	0.00	7,172.9	-836.8	-1,574.6	1,783.1	0.00	0.00	0.00
7,484.1	0.00	0.00	7,177.0	-836.8	-1,574.6	1,783.1	0.00	0.00	0.00
FORT HAYS									
7,520.0	0.00	0.00	7,212.9	-836.8	-1,574.6	1,783.1	0.00	0.00	0.00
7,528.1	0.00	0.00	7,221.0	-836.8	-1,574.6	1,783.1	0.00	0.00	0.00
CODELL									
7,560.0	0.00	0.00	7,252.9	-836.8	-1,574.6	1,783.1	0.00	0.00	0.00
7,580.1	0.00	0.00	7,273.0	-836.8	-1,574.6	1,783.1	0.00	0.00	0.00
GREENHORN									
7,600.0	0.00	0.00	7,292.9	-836.8	-1,574.6	1,783.1	0.00	0.00	0.00

Database:	Landmark	Local Co-ordinate Reference:	Well Booth 18-26
Company:	BAYSWATER EXPLORATION & PRODUCTION	TVD Reference:	WELL @ 4909.0ft (Original Well Elev)
Project:	SEC.26-T7N-R65W	MD Reference:	WELL @ 4909.0ft (Original Well Elev)
Site:	Booth 8 Pad Sec.26-T7N-R65W	North Reference:	True
Well:	Booth 18-26	Survey Calculation Method:	Minimum Curvature
Wellbore:	Wellbore #1		
Design:	Plan #1 (5-22-12)		

Planned Survey

Measured Depth (ft)	Inclination (°)	Azimuth (°)	Vertical Depth (ft)	+N/-S (ft)	+E/-W (ft)	Vertical Section (ft)	Dogleg Rate (°/100ft)	Build Rate (°/100ft)	Turn Rate (°/100ft)
7,640.0	0.00	0.00	7,332.9	-836.8	-1,574.6	1,783.1	0.00	0.00	0.00
7,662.1	0.00	0.00	7,355.0	-836.8	-1,574.6	1,783.1	0.00	0.00	0.00
GRANEROS									
7,677.1	0.00	0.00	7,370.0	-836.8	-1,574.6	1,783.1	0.00	0.00	0.00

Casing Points

Measured Depth (ft)	Vertical Depth (ft)	Name	Casing Diameter (")	Hole Diameter (")
692.4	690.0	8 5/8"	8-5/8	12-1/4

Formations

Measured Depth (ft)	Vertical Depth (ft)	Name	Lithology	Dip (°)	Dip Direction (°)
4,028.6	3,820.0	PARKMAN		0.00	
4,837.5	4,575.0	SUSSEX		0.00	
5,422.4	5,125.0	SHANNON		0.00	
7,232.1	6,925.0	NIOBRARA		0.00	
7,484.1	7,177.0	FORT HAYS		0.00	
7,528.1	7,221.0	CODELL		0.00	
7,580.1	7,273.0	GREENHORN		0.00	
7,662.1	7,355.0	GRANEROS		0.00	



Directional

BAYSWATER EXPLORATION & PRODUCTION

SEC.26-T7N-R65W

Booth 8 Pad Sec.26-T7N-R65W

Booth 18-26

Wellbore #1

Plan #1 (5-22-12)

Anticollision Report

25 May, 2012

Company:	BAYSWATER EXPLORATION & PRODUCTION	Local Co-ordinate Reference:	Well Booth 18-26
Project:	SEC.26-T7N-R65W	TVD Reference:	WELL @ 4909.0ft (Original Well Elev)
Reference Site:	Booth 8 Pad Sec.26-T7N-R65W	MD Reference:	WELL @ 4909.0ft (Original Well Elev)
Site Error:	0.0ft	North Reference:	True
Reference Well:	Booth 18-26	Survey Calculation Method:	Minimum Curvature
Well Error:	0.0ft	Output errors are at	2.00 sigma
Reference Wellbore	Wellbore #1	Database:	Landmark
Reference Design:	Plan #1 (5-22-12)	Offset TVD Reference:	Offset Datum

Offset Design Booth 8 Pad Sec.26-T7N-R65W - Booth 3-26 - Wellbore #1 - Plan #1 (5-22-12)													Offset Site Error:	0.0 ft
Survey Program: 0-MWD													Offset Well Error:	0.0 ft
Reference	Offset		Semi Major Axis		Distance									
Measured Depth (ft)	Vertical Depth (ft)	Measured Depth (ft)	Vertical Depth (ft)	Reference (ft)	Offset (ft)	Highside Toolface (°)	Offset Wellbore Centre +N/-S (ft)	+E/-W (ft)	Between Centres (ft)	Between Ellipses (ft)	Minimum Separation (ft)	Separation Factor	Warning	
1,900.0	1,833.3	1,915.4	1,898.6	9.4	5.1	173.53	-50.9	-159.8	268.5	259.4	9.08	29.560		
2,000.0	1,926.7	2,014.6	1,994.8	10.2	5.6	173.35	-60.5	-182.4	280.4	270.7	9.69	28.943		
2,100.0	2,020.0	2,113.9	2,091.0	10.9	6.1	173.19	-70.1	-205.1	292.3	282.0	10.30	28.383		
2,200.0	2,113.3	2,213.2	2,187.1	11.7	6.6	173.05	-79.6	-227.8	304.2	293.3	10.91	27.873		
2,300.0	2,206.7	2,312.5	2,283.3	12.5	7.1	172.91	-89.2	-250.4	316.1	304.5	11.53	27.407		
2,400.0	2,300.0	2,411.8	2,379.5	13.2	7.6	172.79	-98.8	-273.1	328.0	315.8	12.16	26.980		
2,500.0	2,393.3	2,511.1	2,475.7	14.0	8.1	172.67	-108.4	-295.8	339.9	327.1	12.78	26.588		
2,600.0	2,486.7	2,610.4	2,571.9	14.7	8.6	172.56	-118.0	-318.4	351.8	338.4	13.41	26.228		
2,700.0	2,580.0	2,709.6	2,668.1	15.5	9.2	172.46	-127.6	-341.1	363.7	349.7	14.05	25.895		
2,800.0	2,673.3	2,808.9	2,764.3	16.3	9.7	172.37	-137.2	-363.8	375.6	361.0	14.68	25.587		
2,900.0	2,766.7	2,908.2	2,860.4	17.0	10.2	172.28	-146.8	-386.4	387.6	372.2	15.32	25.301		
3,000.0	2,860.0	3,007.5	2,956.6	17.8	10.7	172.19	-156.4	-409.1	399.5	383.5	15.96	25.035		
3,100.0	2,953.3	3,106.8	3,052.8	18.5	11.2	172.11	-166.0	-431.8	411.4	394.8	16.60	24.787		
3,200.0	3,046.7	3,206.1	3,149.0	19.3	11.8	172.04	-175.6	-454.4	423.3	406.1	17.24	24.556		
3,300.0	3,140.0	3,305.4	3,245.2	20.1	12.3	171.97	-185.2	-477.1	435.2	417.3	17.88	24.340		
3,400.0	3,233.3	3,404.6	3,341.4	20.8	12.8	171.90	-194.8	-499.8	447.1	428.6	18.53	24.137		
3,500.0	3,326.7	3,503.9	3,437.6	21.6	13.3	171.84	-204.4	-522.4	459.1	439.9	19.17	23.946		
3,600.0	3,420.0	3,603.2	3,533.8	22.4	13.9	171.78	-214.0	-545.1	471.0	451.2	19.82	23.767		
3,700.0	3,513.3	3,702.5	3,629.9	23.1	14.4	171.72	-223.6	-567.8	482.9	462.4	20.46	23.598		
3,800.0	3,606.7	3,801.8	3,726.1	23.9	14.9	171.67	-233.1	-590.4	494.8	473.7	21.11	23.438		
3,900.0	3,700.0	3,901.1	3,822.3	24.6	15.5	171.62	-242.7	-613.1	506.7	485.0	21.76	23.287		
4,000.0	3,793.3	4,000.4	3,918.5	25.4	16.0	171.57	-252.3	-635.8	518.7	496.3	22.41	23.144		
4,100.0	3,886.7	4,099.6	4,014.7	26.2	16.5	171.52	-261.9	-658.4	530.6	507.5	23.06	23.009		
4,200.0	3,980.0	4,198.9	4,110.9	26.9	17.1	171.47	-271.5	-681.1	542.5	518.8	23.71	22.880		
4,300.0	4,073.4	4,298.2	4,207.1	27.7	17.6	171.43	-281.1	-703.8	554.4	530.1	24.36	22.758		
4,400.0	4,166.7	4,395.3	4,301.1	28.5	18.1	171.39	-290.5	-725.9	566.4	541.4	25.00	22.651		
4,500.0	4,260.0	4,478.2	4,381.8	29.2	18.4	171.39	-297.9	-743.5	580.1	554.5	25.56	22.691		
4,600.0	4,353.4	4,560.4	4,462.3	30.0	18.7	171.45	-304.4	-758.7	596.6	570.5	26.10	22.854		
4,700.0	4,446.7	4,641.8	4,542.4	30.7	18.9	171.55	-309.9	-771.8	615.8	589.2	26.62	23.131		
4,800.0	4,540.0	4,722.2	4,622.0	31.5	19.2	171.70	-314.5	-782.6	637.7	610.6	27.12	23.513		
4,900.0	4,633.4	4,800.0	4,699.2	32.3	19.3	171.87	-318.1	-791.0	662.3	634.7	27.60	23.996		
5,000.0	4,726.7	4,879.8	4,778.7	33.0	19.5	172.09	-320.9	-797.7	689.4	661.4	28.06	24.567		
5,100.0	4,820.0	4,956.7	4,855.5	33.8	19.6	172.32	-322.8	-802.3	719.1	690.6	28.51	25.225		
5,155.3	4,871.6	5,000.0	4,898.7	34.2	19.7	172.45	-323.5	-804.0	736.6	707.9	28.75	25.619		
5,200.0	4,913.5	5,032.4	4,931.1	34.5	19.8	172.60	-323.9	-804.9	751.0	722.1	28.96	25.932		
5,300.0	5,008.0	5,109.3	5,008.0	35.0	19.8	172.92	-324.2	-805.6	782.6	753.2	29.38	26.635		
5,400.0	5,103.5	5,204.8	5,103.5	35.5	19.9	173.25	-324.2	-805.6	811.8	782.0	29.78	27.257		
5,500.0	5,200.0	5,301.3	5,200.0	36.0	20.1	173.52	-324.2	-805.6	837.8	807.6	30.15	27.783		
5,600.0	5,297.4	5,398.7	5,297.4	36.3	20.2	173.74	-324.2	-805.6	860.4	829.9	30.49	28.218		
5,700.0	5,395.5	5,496.8	5,395.5	36.7	20.3	173.92	-324.2	-805.6	879.6	848.8	30.79	28.568		
5,800.0	5,494.2	5,595.5	5,494.2	36.9	20.4	174.06	-324.2	-805.6	895.4	864.4	31.05	28.838		
5,900.0	5,593.5	5,694.8	5,593.5	37.2	20.5	174.17	-324.2	-805.6	907.8	876.5	31.27	29.031		
6,000.0	5,693.0	5,794.4	5,693.0	37.3	20.7	174.24	-324.2	-805.6	916.7	885.3	31.45	29.150		
6,100.0	5,792.9	5,894.2	5,792.9	37.5	20.8	174.29	-324.2	-805.6	922.2	890.6	31.58	29.197		
6,207.1	5,900.0	6,001.3	5,900.0	37.6	20.9	56.31	-324.2	-805.6	924.1	892.5	31.69	29.161		
6,300.0	5,992.9	6,094.2	5,992.9	37.6	21.0	56.31	-324.2	-805.6	924.1	892.2	31.99	28.887		
6,400.0	6,092.9	6,194.2	6,092.9	37.7	21.2	56.31	-324.2	-805.6	924.1	891.8	32.31	28.599		
6,500.0	6,192.9	6,294.2	6,192.9	37.8	21.3	56.31	-324.2	-805.6	924.1	891.5	32.64	28.315		
6,600.0	6,292.9	6,394.2	6,292.9	37.8	21.4	56.31	-324.2	-805.6	924.1	891.2	32.97	28.033		
6,700.0	6,392.9	6,494.2	6,392.9	37.9	21.6	56.31	-324.2	-805.6	924.1	890.8	33.30	27.755		
6,800.0	6,492.9	6,594.2	6,492.9	38.0	21.7	56.31	-324.2	-805.6	924.1	890.5	33.63	27.480		

CC - Min centre to center distance or convergent point, SF - min separation factor, ES - min ellipse separation

Company:	BAYSWATER EXPLORATION & PRODUCTION	Local Co-ordinate Reference:	Well Booth 18-26
Project:	SEC.26-T7N-R65W	TVD Reference:	WELL @ 4909.0ft (Original Well Elev)
Reference Site:	Booth 8 Pad Sec.26-T7N-R65W	MD Reference:	WELL @ 4909.0ft (Original Well Elev)
Site Error:	0.0ft	North Reference:	True
Reference Well:	Booth 18-26	Survey Calculation Method:	Minimum Curvature
Well Error:	0.0ft	Output errors are at	2.00 sigma
Reference Wellbore	Wellbore #1	Database:	Landmark
Reference Design:	Plan #1 (5-22-12)	Offset TVD Reference:	Offset Datum

Offset Design Booth 8 Pad Sec.26-T7N-R65W - Booth 3-26 - Wellbore #1 - Plan #1 (5-22-12)												Offset Site Error:	0.0 ft
Survey Program: 0-MWD												Offset Well Error:	0.0 ft
Reference	Offset	Semi Major Axis		Distance									
Measured Depth (ft)	Vertical Depth (ft)	Measured Depth (ft)	Vertical Depth (ft)	Reference (ft)	Offset (ft)	Highside Toolface (°)	Offset Wellbore Centre +N/-S (ft)	Offset Wellbore Centre +E/-W (ft)	Between Centres (ft)	Between Ellipses (ft)	Minimum Separation (ft)	Separation Factor	Warning
6,900.0	6,592.9	6,694.2	6,592.9	38.1	21.8	56.31	-324.2	-805.6	924.1	890.2	33.96	27.209	
7,000.0	6,692.9	6,794.2	6,692.9	38.1	22.0	56.31	-324.2	-805.6	924.1	889.8	34.30	26.941	
7,100.0	6,792.9	6,894.2	6,792.9	38.2	22.1	56.31	-324.2	-805.6	924.1	889.5	34.64	26.676	
7,200.0	6,892.9	6,994.2	6,892.9	38.3	22.3	56.31	-324.2	-805.6	924.1	889.2	34.99	26.415	
7,300.0	6,992.9	7,094.2	6,992.9	38.4	22.4	56.31	-324.2	-805.6	924.1	888.8	35.33	26.157	
7,400.0	7,092.9	7,194.2	7,092.9	38.5	22.5	56.31	-324.2	-805.6	924.1	888.5	35.68	25.902	
7,500.0	7,192.9	7,294.2	7,192.9	38.5	22.7	56.31	-324.2	-805.6	924.1	888.1	36.03	25.651	
7,600.0	7,292.9	7,394.2	7,292.9	38.6	22.8	56.31	-324.2	-805.6	924.1	887.8	36.38	25.403	
7,647.6	7,340.5	7,441.8	7,340.5	38.7	22.9	56.31	-324.2	-805.6	924.1	887.6	36.55	25.286	
7,677.1	7,370.0	7,461.3	7,360.0	38.7	22.9	56.31	-324.2	-805.6	924.2	887.6	36.63	25.229	

Company:	BAYSWATER EXPLORATION & PRODUCTION	Local Co-ordinate Reference:	Well Booth 18-26
Project:	SEC.26-T7N-R65W	TVD Reference:	WELL @ 4909.0ft (Original Well Elev)
Reference Site:	Booth 8 Pad Sec.26-T7N-R65W	MD Reference:	WELL @ 4909.0ft (Original Well Elev)
Site Error:	0.0ft	North Reference:	True
Reference Well:	Booth 18-26	Survey Calculation Method:	Minimum Curvature
Well Error:	0.0ft	Output errors are at	2.00 sigma
Reference Wellbore	Wellbore #1	Database:	Landmark
Reference Design:	Plan #1 (5-22-12)	Offset TVD Reference:	Offset Datum

Offset Design Booth 8 Pad Sec.26-T7N-R65W - Booth 5-26 - Wellbore #1 - Plan #1 (5-22-12)													Offset Site Error:	0.0 ft
Survey Program: 0-MWD													Offset Well Error:	0.0 ft
Measured Depth (ft)	Vertical Depth (ft)	Measured Depth (ft)	Vertical Depth (ft)	Reference	Offset	Semi Major Axis	Highside Toolface (°)	Offset Wellbore Centre +N/-S (ft)	+E/-W (ft)	Distance Between Centres (ft)	Between Ellipses (ft)	Minimum Separation (ft)	Separation Factor	Warning
0.0	0.0	0.0	0.0	0.0	0.0	144.23	144.23	-13.1	9.4	16.2	16.2	0.00	N/A	
100.0	100.0	100.0	100.0	0.1	0.1	144.23	144.23	-13.1	9.4	16.2	15.9	0.22	71.917	
200.0	200.0	200.0	200.0	0.3	0.3	144.23	144.23	-13.1	9.4	16.2	15.5	0.67	23.972 CC	
300.0	300.0	300.0	300.0	0.5	0.6	-103.79	-103.79	-13.1	9.4	16.5	15.4	1.11	14.886 ES	
400.0	399.8	400.3	400.3	0.8	0.8	-115.89	-115.89	-13.4	7.7	17.2	15.7	1.54	11.205	
500.0	499.5	500.7	500.5	1.0	1.0	-129.09	-129.09	-14.3	2.5	17.8	15.9	1.98	9.001	
600.0	598.7	601.0	600.5	1.3	1.2	-142.99	-142.99	-16.1	-6.0	19.0	16.5	2.44	7.779	
700.0	697.5	701.4	700.1	1.6	1.5	-153.00	-153.00	-20.1	-17.1	21.5	18.6	2.89	7.440	
800.0	795.6	801.9	799.5	2.0	1.8	-158.55	-158.55	-26.7	-30.6	25.1	21.7	3.37	7.453	
900.0	893.1	902.6	898.5	2.5	2.2	-160.80	-160.80	-35.7	-46.7	29.3	25.4	3.87	7.561	
1,000.0	989.6	1,003.3	996.9	3.0	2.6	-160.84	-160.84	-47.2	-65.1	34.0	29.6	4.44	7.665	
1,100.0	1,085.3	1,104.2	1,094.6	3.6	3.1	-159.47	-159.47	-61.3	-86.0	39.2	34.1	5.08	7.718	
1,200.0	1,179.8	1,205.2	1,191.4	4.2	3.6	-157.21	-157.21	-77.8	-109.3	44.9	39.0	5.83	7.698	
1,251.9	1,228.4	1,257.6	1,241.3	4.6	3.9	-155.81	-155.81	-87.3	-122.4	48.1	41.8	6.28	7.653	
1,300.0	1,273.3	1,306.3	1,287.3	5.0	4.2	-154.25	-154.25	-96.7	-135.0	50.8	44.1	6.75	7.528	
1,400.0	1,366.7	1,407.4	1,382.1	5.7	4.9	-149.53	-149.53	-118.1	-163.1	54.8	46.9	7.94	6.903	
1,500.0	1,460.0	1,508.4	1,475.4	6.4	5.7	-142.69	-142.69	-141.9	-193.4	57.0	47.5	9.53	5.986	
1,600.0	1,553.3	1,609.0	1,567.0	7.2	6.5	-133.44	-133.44	-168.0	-225.8	58.3	46.7	11.59	5.032	
1,700.0	1,646.7	1,709.0	1,656.6	7.9	7.4	-121.70	-121.70	-196.1	-260.2	60.0	46.0	14.07	4.268	
1,800.0	1,740.0	1,808.1	1,744.4	8.7	8.3	-109.29	-109.29	-225.4	-295.6	64.0	47.4	16.53	3.870	
1,900.0	1,833.3	1,907.1	1,832.1	9.4	9.2	-98.73	-98.73	-254.6	-330.9	70.5	52.0	18.59	3.794 SF	
2,000.0	1,926.7	2,006.1	1,919.8	10.2	10.2	-90.17	-90.17	-283.8	-366.3	79.1	58.8	20.28	3.901	
2,100.0	2,020.0	2,105.1	2,007.6	10.9	11.1	-83.39	-83.39	-313.1	-401.6	89.1	67.4	21.70	4.105	
2,200.0	2,113.3	2,204.1	2,095.3	11.7	12.1	-78.02	-78.02	-342.3	-437.0	100.0	77.1	22.96	4.357	
2,300.0	2,206.7	2,303.1	2,183.1	12.5	13.0	-73.73	-73.73	-371.5	-472.3	111.7	87.6	24.12	4.630	
2,400.0	2,300.0	2,402.1	2,270.8	13.2	14.0	-70.27	-70.27	-400.8	-507.6	123.8	98.6	25.24	4.907	
2,500.0	2,393.3	2,501.1	2,358.5	14.0	14.9	-67.42	-67.42	-430.0	-543.0	136.4	110.0	26.33	5.180	
2,600.0	2,486.7	2,600.1	2,446.3	14.7	15.9	-65.06	-65.06	-459.2	-578.3	149.2	121.8	27.41	5.443	
2,700.0	2,580.0	2,699.1	2,534.0	15.5	16.8	-63.08	-63.08	-488.5	-613.7	162.2	133.7	28.48	5.695	
2,800.0	2,673.3	2,798.1	2,621.8	16.3	17.8	-61.39	-61.39	-517.7	-649.0	175.4	145.8	29.55	5.934	
2,900.0	2,766.7	2,897.1	2,709.5	17.0	18.7	-59.94	-59.94	-546.9	-684.3	188.7	158.1	30.63	6.160	
3,000.0	2,860.0	2,996.1	2,797.3	17.8	19.7	-58.68	-58.68	-576.2	-719.7	202.1	170.4	31.71	6.374	
3,100.0	2,953.3	3,095.1	2,885.0	18.5	20.6	-57.57	-57.57	-605.4	-755.0	215.6	182.8	32.79	6.575	
3,200.0	3,046.7	3,194.1	2,972.7	19.3	21.6	-56.60	-56.60	-634.6	-790.4	229.1	195.3	33.88	6.764	
3,300.0	3,140.0	3,293.1	3,060.5	20.1	22.6	-55.74	-55.74	-663.9	-825.7	242.8	207.8	34.97	6.942	
3,400.0	3,233.3	3,392.1	3,148.2	20.8	23.5	-54.96	-54.96	-693.1	-861.0	256.4	220.4	36.07	7.111	
3,500.0	3,326.7	3,491.1	3,236.0	21.6	24.5	-54.27	-54.27	-722.3	-896.4	270.2	233.0	37.16	7.269	
3,600.0	3,420.0	3,590.1	3,323.7	22.4	25.4	-53.64	-53.64	-751.6	-931.7	283.9	245.6	38.27	7.419	
3,700.0	3,513.3	3,689.2	3,411.4	23.1	26.4	-53.07	-53.07	-780.8	-967.1	297.7	258.3	39.37	7.561	
3,800.0	3,606.7	3,788.2	3,499.2	23.9	27.4	-52.55	-52.55	-810.1	-1,002.4	311.5	271.0	40.48	7.695	
3,900.0	3,700.0	3,887.2	3,586.9	24.6	28.3	-52.08	-52.08	-839.3	-1,037.7	325.3	283.7	41.59	7.821	
4,000.0	3,793.3	3,986.2	3,674.7	25.4	29.3	-51.64	-51.64	-868.5	-1,073.1	339.2	296.4	42.71	7.942	
4,100.0	3,886.7	4,085.2	3,762.4	26.2	30.3	-51.24	-51.24	-897.8	-1,108.4	353.0	309.2	43.82	8.056	
4,200.0	3,980.0	4,184.2	3,850.1	26.9	31.2	-50.87	-50.87	-927.0	-1,143.8	366.9	322.0	44.94	8.164	
4,300.0	4,073.4	4,283.2	3,937.9	27.7	32.2	-50.52	-50.52	-956.2	-1,179.1	380.8	334.7	46.06	8.268	
4,400.0	4,166.7	4,382.2	4,025.6	28.5	33.1	-50.20	-50.20	-985.5	-1,214.4	394.7	347.5	47.18	8.366	
4,500.0	4,260.0	4,481.2	4,113.4	29.2	34.1	-49.90	-49.90	-1,014.7	-1,249.8	408.6	360.3	48.30	8.459	
4,600.0	4,353.4	4,580.2	4,201.1	30.0	35.1	-49.62	-49.62	-1,043.9	-1,285.1	422.5	373.1	49.43	8.549	
4,700.0	4,446.7	4,679.2	4,288.8	30.7	36.0	-49.36	-49.36	-1,073.2	-1,320.5	436.5	385.9	50.55	8.634	
4,800.0	4,540.0	4,778.2	4,376.6	31.5	37.0	-49.12	-49.12	-1,102.4	-1,355.8	450.4	398.7	51.68	8.716	
4,900.0	4,633.4	4,877.2	4,464.3	32.3	37.9	-48.89	-48.89	-1,131.6	-1,391.1	464.4	411.6	52.81	8.794	

CC - Min centre to center distance or convergent point, SF - min separation factor, ES - min ellipse separation

Company:	BAYSWATER EXPLORATION & PRODUCTION	Local Co-ordinate Reference:	Well Booth 18-26
Project:	SEC.26-T7N-R65W	TVD Reference:	WELL @ 4909.0ft (Original Well Elev)
Reference Site:	Booth 8 Pad Sec.26-T7N-R65W	MD Reference:	WELL @ 4909.0ft (Original Well Elev)
Site Error:	0.0ft	North Reference:	True
Reference Well:	Booth 18-26	Survey Calculation Method:	Minimum Curvature
Well Error:	0.0ft	Output errors are at	2.00 sigma
Reference Wellbore	Wellbore #1	Database:	Landmark
Reference Design:	Plan #1 (5-22-12)	Offset TVD Reference:	Offset Datum

Offset Design Booth 8 Pad Sec.26-T7N-R65W - Booth 5-26 - Wellbore #1 - Plan #1 (5-22-12)												Offset Site Error:	0.0 ft
Survey Program: 0-MWD												Offset Well Error:	0.0 ft
Measured Depth (ft)	Vertical Depth (ft)	Measured Depth (ft)	Vertical Depth (ft)	Reference	Offset	Highside Toolface (°)	Offset Wellbore Centre +N/-S (ft)	Offset Wellbore Centre +E/-W (ft)	Between Centres (ft)	Between Ellipses (ft)	Minimum Separation (ft)	Separation Factor	Warning
5,000.0	4,726.7	4,976.2	4,552.1	33.0	38.9	-48.67	-1,160.9	-1,426.5	478.3	424.4	53.94	8.868	
5,100.0	4,820.0	5,075.2	4,639.8	33.8	39.9	-48.47	-1,190.1	-1,461.8	492.3	437.2	55.07	8.940	
5,155.3	4,871.6	5,129.9	4,688.3	34.2	40.4	-48.36	-1,206.2	-1,481.3	500.0	444.3	55.69	8.978	
5,200.0	4,913.5	5,174.2	4,727.5	34.5	40.8	-48.34	-1,219.3	-1,497.1	506.5	450.3	56.19	9.015	
5,300.0	5,008.0	5,272.8	4,814.9	35.0	41.8	-48.13	-1,248.4	-1,532.3	522.7	465.6	57.06	9.159	
5,400.0	5,103.5	5,370.8	4,901.8	35.5	42.7	-47.71	-1,277.4	-1,567.3	541.2	483.5	57.73	9.375	
5,500.0	5,200.0	5,468.2	4,988.1	36.0	43.7	-47.10	-1,306.1	-1,602.1	562.1	503.9	58.19	9.660	
5,600.0	5,297.4	5,564.9	5,073.7	36.3	44.6	-46.35	-1,334.7	-1,636.6	585.5	527.1	58.47	10.014	
5,700.0	5,395.5	5,660.6	5,158.6	36.7	45.6	-45.49	-1,362.9	-1,670.7	611.5	552.9	58.58	10.439	
5,800.0	5,494.2	5,755.3	5,242.5	36.9	46.5	-44.54	-1,390.9	-1,704.6	640.2	581.6	58.53	10.936	
5,900.0	5,593.5	5,848.8	5,325.4	37.2	47.4	-43.54	-1,418.5	-1,738.0	671.5	613.2	58.36	11.506	
6,000.0	5,693.0	5,941.2	5,407.2	37.3	48.3	-42.52	-1,445.8	-1,770.9	705.7	647.6	58.08	12.151	
6,100.0	5,792.9	6,037.2	5,492.4	37.5	49.2	-41.41	-1,474.1	-1,805.1	742.7	685.1	57.65	12.883	
6,207.1	5,900.0	6,164.7	5,607.1	37.6	50.2	-157.88	-1,509.6	-1,848.0	783.1	726.2	56.85	13.774	
6,300.0	5,992.9	6,278.6	5,711.6	37.6	50.9	-156.28	-1,538.5	-1,883.0	816.5	760.5	55.99	14.583	
6,400.0	6,092.9	6,405.5	5,830.0	37.7	51.6	-154.82	-1,567.6	-1,918.1	849.2	793.9	55.27	15.364	
6,500.0	6,192.9	6,536.7	5,954.3	37.8	52.3	-153.62	-1,594.0	-1,950.1	878.3	823.5	54.75	16.042	
6,600.0	6,292.9	6,671.6	6,084.1	37.8	52.9	-152.65	-1,617.5	-1,978.5	903.4	849.0	54.39	16.610	
6,700.0	6,392.9	6,809.9	6,218.8	37.9	53.4	-151.87	-1,637.4	-2,002.6	924.4	870.2	54.18	17.063	
6,800.0	6,492.9	6,950.9	6,357.6	38.0	53.8	-151.29	-1,653.5	-2,022.0	941.0	886.9	54.08	17.399	
6,900.0	6,592.9	7,094.2	6,499.7	38.1	54.2	-150.87	-1,665.4	-2,036.3	953.1	899.0	54.10	17.617	
7,000.0	6,692.9	7,239.1	6,644.1	38.1	54.4	-150.62	-1,672.7	-2,045.2	960.5	906.3	54.21	17.719	
7,100.0	6,792.9	7,384.7	6,789.6	38.2	54.5	-150.53	-1,675.4	-2,048.5	963.3	908.8	54.41	17.703	
7,200.0	6,892.9	7,488.0	6,892.9	38.3	54.6	-150.53	-1,675.4	-2,048.5	963.3	908.6	54.63	17.633	
7,300.0	6,992.9	7,588.0	6,992.9	38.4	54.6	-150.53	-1,675.4	-2,048.5	963.3	908.4	54.84	17.564	
7,400.0	7,092.9	7,688.0	7,092.9	38.5	54.7	-150.53	-1,675.4	-2,048.5	963.3	908.2	55.06	17.495	
7,500.0	7,192.9	7,788.0	7,192.9	38.5	54.7	-150.53	-1,675.4	-2,048.5	963.3	908.0	55.28	17.426	
7,600.0	7,292.9	7,888.0	7,292.9	38.6	54.8	-150.53	-1,675.4	-2,048.5	963.3	907.8	55.50	17.356	
7,677.1	7,370.0	7,965.1	7,370.0	38.7	54.8	-150.53	-1,675.4	-2,048.5	963.3	907.6	55.67	17.302	

Company:	BAYSWATER EXPLORATION & PRODUCTION	Local Co-ordinate Reference:	Well Booth 18-26
Project:	SEC.26-T7N-R65W	TVD Reference:	WELL @ 4909.0ft (Original Well Elev)
Reference Site:	Booth 8 Pad Sec.26-T7N-R65W	MD Reference:	WELL @ 4909.0ft (Original Well Elev)
Site Error:	0.0ft	North Reference:	True
Reference Well:	Booth 18-26	Survey Calculation Method:	Minimum Curvature
Well Error:	0.0ft	Output errors are at	2.00 sigma
Reference Wellbore	Wellbore #1	Database:	Landmark
Reference Design:	Plan #1 (5-22-12)	Offset TVD Reference:	Offset Datum

Reference Depths are relative to WELL @ 4909.0ft (Original Well Elev) Coordinates are relative to: Booth 18-26
Offset Depths are relative to Offset Datum
Central Meridian is -105.500000 °
Coordinate System is US State Plane 1983, Colorado Northern Zone
Grid Convergence at Surface is: 0.56°



Company:	BAYSWATER EXPLORATION & PRODUCTION	Local Co-ordinate Reference:	Well Booth 18-26
Project:	SEC.26-T7N-R65W	TVD Reference:	WELL @ 4909.0ft (Original Well Elev)
Reference Site:	Booth 8 Pad Sec.26-T7N-R65W	MD Reference:	WELL @ 4909.0ft (Original Well Elev)
Site Error:	0.0ft	North Reference:	True
Reference Well:	Booth 18-26	Survey Calculation Method:	Minimum Curvature
Well Error:	0.0ft	Output errors are at	2.00 sigma
Reference Wellbore	Wellbore #1	Database:	Landmark
Reference Design:	Plan #1 (5-22-12)	Offset TVD Reference:	Offset Datum

Reference Depths are relative to WELL @ 4909.0ft (Original Well Elev) Coordinates are relative to: Booth 18-26
 Offset Depths are relative to Offset Datum
 Central Meridian is -105.500000 °
 Coordinate System is US State Plane 1983, Colorado Northern Zone
 Grid Convergence at Surface is: 0.56°

