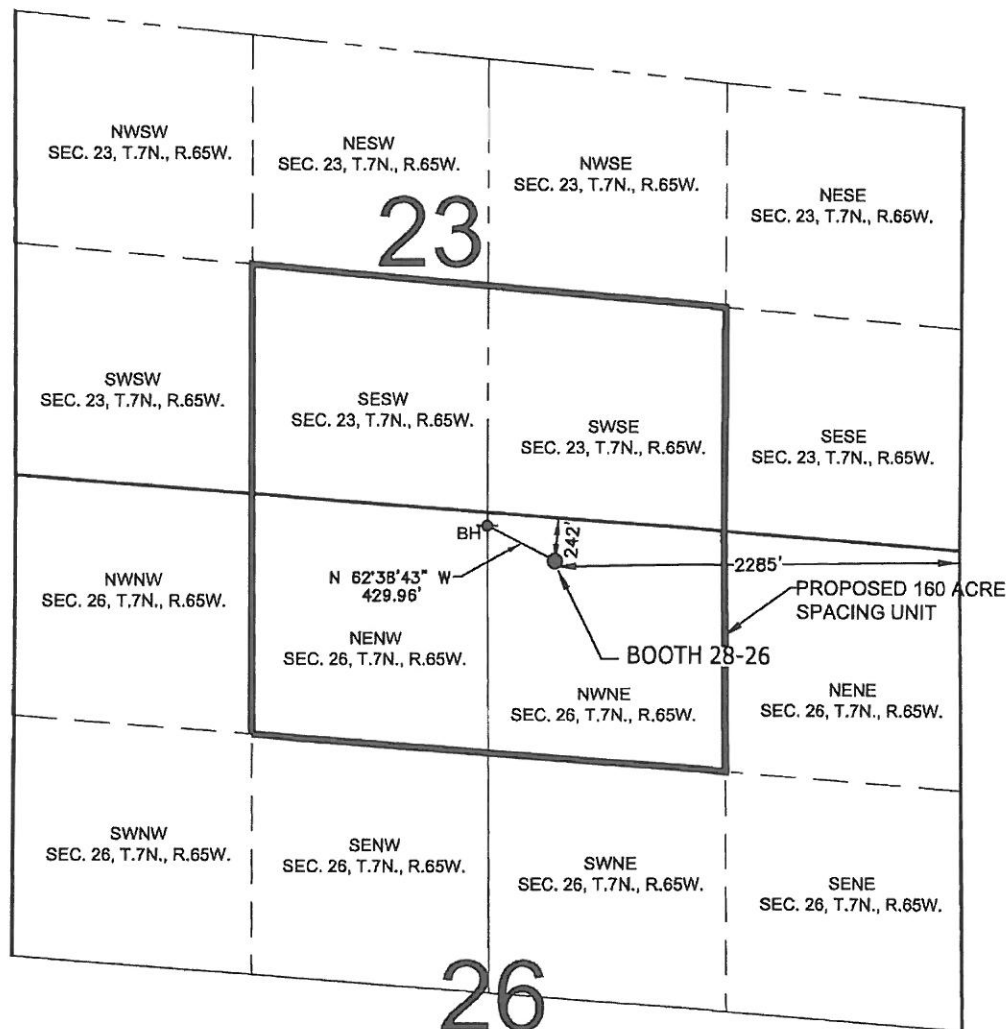


PROPOSED 318 Ae SPACING UNIT

SECTION 26, TOWNSHIP 7 NORTH, RANGE 65 WEST, 6TH P.M.



WELL BOOTH 28-26 TO BE LOCATED 242' FNL AND 2285' FEL, T7N, R65W, SEC. 26

SURFACE LOCATION

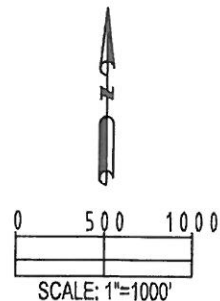
LATITUDE= 40.552241°
LONGITUDE= 104.628788°

BOTTOM HOLE LOCATION

LATITUDE= 40.552793°
LONGITUDE= 104.630156°

LEGEND

⊕ = EXISTING MONUMENT ♦ = BOTTOM HOLE BH = BOTTOM HOLE
● = PROPOSED WELL ◆ = EXISTING WELL



PREPARED BY



FIELD DATE:

03-20-12

DRAWING DATE:

07-26-12

BY:

CLM

CHECKED:

RDW

SURFACE LOCATION

NW 1/4 NE 1/4,

SEC. 26, T7N, R65W

WELD COUNTY, COLORADO